

# SEE FORD'S GROWTH IN ACTION

## FIELD DAY DEMONSTRATION AT NORM LEHMAN'S FARM

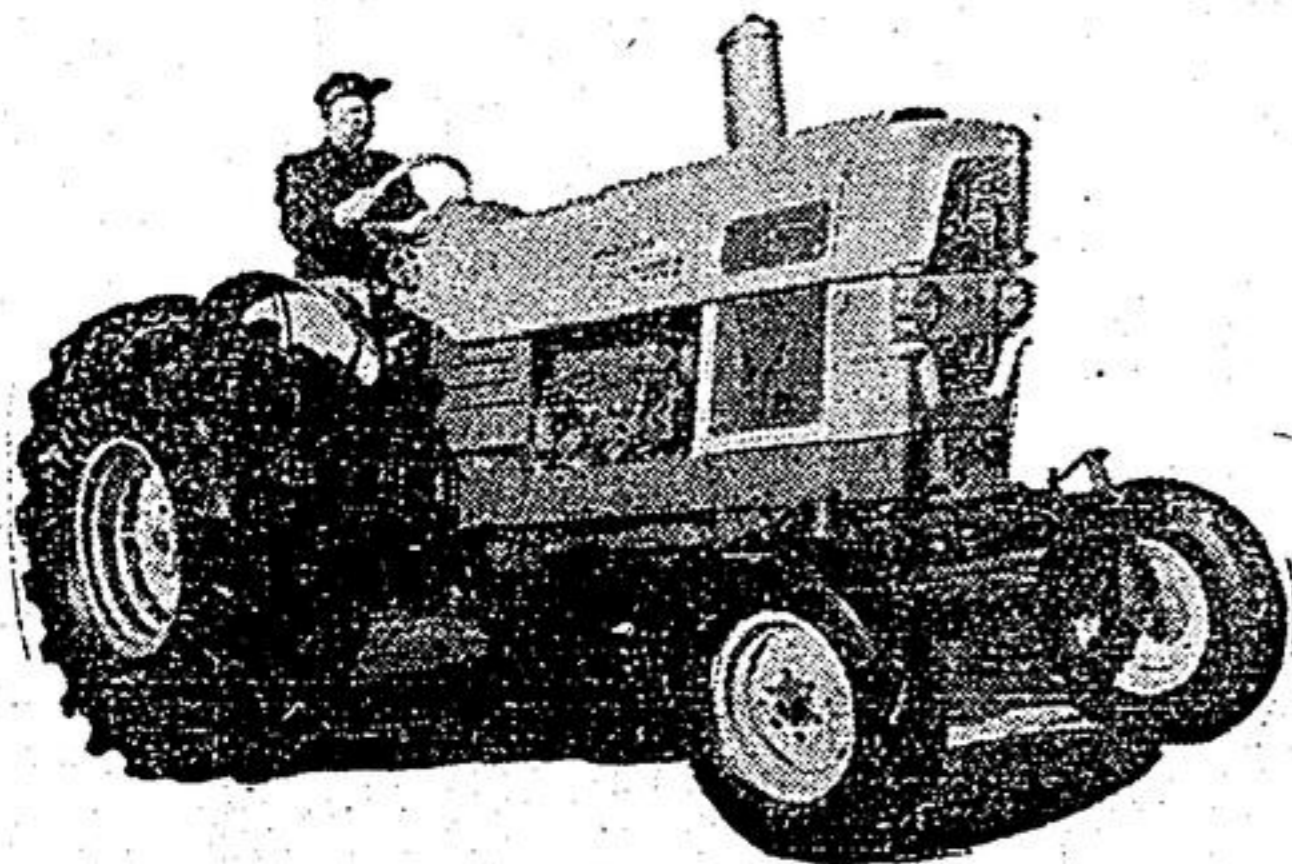
Altona Road - Follow The Signs

**FRI. - MAY 12** 10.30 a. m. TILL 5 p. m.

**FREE REFRESHMENTS**

**LUCKY DRAWS**

**FORD GOES BIG** **NEW FORD! 6000 TRACTOR**

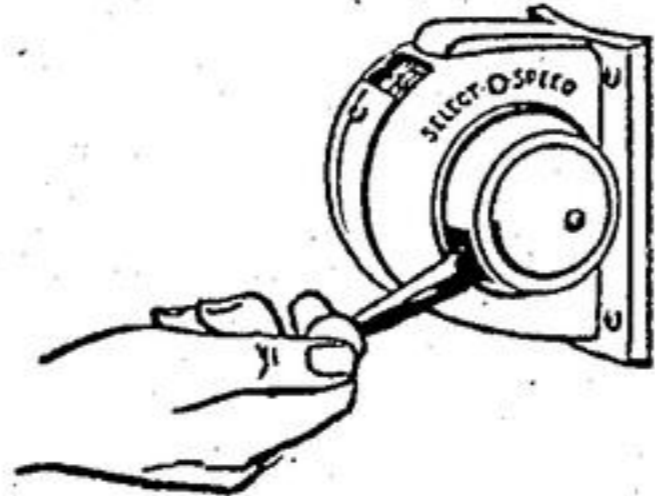


**PULLING FIVE 14" FURROWS**

**FORD SELECT - O - SPEED**

that provides on the go shifting to any speed, at any time - without clutching, without stopping!

**ONLY FORD HAS IT**



**SEE WHAT'S REALLY NEW!**

**NEW FORDSON SUPER MAJOR**

PULLING FOUR 14" FURROWS

**NEW FOR '61**

**FORDSON DEXTA**

*Now! Your choice of Gasoline or Diesel models Pulling Three 12" Furrows*

Sponsored By

Your Local Ford Dealer

**ALTONA FEED AND SUPPLIES**

SALES - SERVICE - TRADE - TERMS

Claremont, Ont.

Phone Stouffville 210

### HALF-PAST TEEN



### Goodwood News

**Mrs. H. Wagg**  
The United Church W.A. met at the home of Mrs. Arthur Knight on Thursday at 2 p.m. May 4, with the President, Mrs. Meyers presiding. The meeting opened with a poem, "A Mother's Prayer."  
Plan to attend the W.M.S. meeting at Markham United Church on Tuesday, May 9.  
Several organizations are invited to join with us at our special June meeting at the Church. Mrs. Grant Wells, Lemontville, will be guest speaker.  
On Saturday, May 27, the ladies are reminded of the "Bake Sale" at the Stouffville Sales Arena.  
Magazines or reading material are being collected for Green Acres, Newmarket and any good clothing for the North country, especially children's wear.  
The flowers to be placed in the Church on Mother's Day, May 14, will be by Mrs. Harold Powell in honour of her mother, Mrs. Jefferson opened the Devotional with the hymn "Lean- ing on the everlasting Arms." Her subject was "Let your light so shine before men." Our light refers to our co-operation, cheer-

fulness, unselfishness and kindness, and only through prayer can this be accomplished. Mrs. Allan Taylor supplied the program.  
Sunday, May 14, will be Family Sunday at the United Church. Rev. Walden will speak at 10.30 a.m. This will be a combined service—church and Sunday School, and at 11.30 Rev. Walden will show coloured pictures of India. The Junior and Senior Choir will take part in the service.  
The Senior room of the Public School have competed in the Musical Festival at Stouffville.  
Several of the Masonic Brethren and their wives from here attended the Masonic Church Service at the Uxbridge United Church on April 30. Rev. H. Macdonald of Toronto was the speaker.  
Goodwood folks were on television on Friday evening—"Country Style."  
**(Mrs. R. May)**  
Misses Penny Dawson, Sheryl and Gail Williamson are all victims of the measles.  
Sympathy is extended to Mr. and Mrs. Stan Slack in the death of his uncle, Mr. Will Eckardt of Altona.  
Mrs. Chas. Jackson has been in Uxbridge Hospital this last week.  
Did you see the last steam engine go through Goodwood on Sunday?  
Mr. and Mrs. Norman May were host and hostess for the

\*\*\*\*\*  
GENUINE SAVINGS  
ON  
NEW FARM EQUIPMENT  
80 BUS. TRACTOR MANURE SPREADER ..... \$375.  
3-FURROW TRACTOR PLOW ON RUBBER ..... \$295.  
30' BALE ELEVATOR, COMP. UNDERCARRIAGE \$325.  
PRESSURE SYSTEM, SHALLOW OR MED. DEEP \$125.  
USED SPREADER ON RUBBER!  
USED 2-WHEEL PLATFORM TRAILER, 7' x 11'.  
Good supply of Cockshutt parts for Spreaders, Drills, Mowers, Rakes, Binders etc.  
**Foskett Farm Equipment**  
Goodwood - Phone 551w2  
\*\*\*\*\*

### "British Look" Latest Fashion At Weldon's

"The British Look" latest style developed by Top Top Tailors is now being featured in a spring suit sale at A. E. Weldon & Son's store.  
Not to be confused with the tweedy or ultra-formal clothing so often associated with Britain, the "British Look" reflects the flavour of international styling. It borrows the best from Britain, France and Italy, adapted by U.S. and Canadian designers for North American demand.  
**Style Features**  
This new look takes in sports-coats as well as suits. The shapelier silhouette shows a well-defined waist line, a generous chest expression and fuller but still natural shoulders. Jacket fronts are three-button single breasted and gracefully cut away, with natural placement of buttons. There is wider lapel treatment. Pockets and vents, both side and centre, are man-sized and functional.  
Trousers worn with the "British Look" are usually self-supporting style with plain or single pleated front. They are trim, straight hanging and cut with or without cuffs.  
Jackets are fairly short, in keeping with the trend toward shorter lengths. Present models are shown with slanted flap pockets, the flaps being moderately wide. Matching style will often be worn with the "British Look" suit.  
Topcoats that complement this style are trim and shorter.  
**Fabrics**  
Shades and patterns loomed by British Mills bring out the "British Look" to fullest advantage.  
Pin stripes, chalk stripes and bold checks lend themselves particularly well to the suit. Nevertheless, more subdued patterns are also very effective in creating the appearance of British good dress and good taste.  
Sports outfits in the new look are a happy combination of well-defined, moderate sized checks loomed in mixture colourings.  
As could be expected, British style accessories are the natural partners for "British Look" clothing. Shirt makers are featuring British stripes, tab collars and the "London Look" collar, a short point modified spread type in plain shades and stripes.  
In ties, English Foulards and Regimental stripes add an authentic effect. Handkerchiefs are white or solid colour, loose fold, draped from the breast pocket for the casual touch.  
The all-out Britisher favours a black bowler hat, cane or rolled umbrella. For the present, most Canadian men will probably not take on "bowler and cane". But a fedora with medium width brim, narrow band and moderately high pinched-crown tops off the "British look" extremely well.  
Canadian men will be hearing and seeing more about the British Look. It gives the wearer the feeling and appearance of dignified good dress.  
(advertisement)



**GASOLINE... SMASOLINE!!**

Confused about Gasoline Claims?

Why go into a long-winded, over-exaggerated, highly unnecessary write-up about this very controversial product. It seems every gasoline manufacturer has the best, the most powerful, the most economical, the most... phooey!

We are not going to use a lot of frilly adjectives, in fact all we are going to say about CO-OP GASOLINE, is that it is second to none.

Now all that is left to say is, when it comes to gasoline for your car, truck or tractor... come to your local CO-OP. We like to serve you.

PATRONIZE YOUR **CO-OP** YOU OWN IT

**CLAREMONT CO-OP**  
PHONE 201 or 202

world's most advanced tiller

**YUBA CHORE MASTER**

**4.5 hp TIL-O-MATIC**

featuring

- Reversible Tines
- Power Reverse
- Impulse Starting
- Swinging Stake

A powerful worker... a powerful value! Reverse transmission permits backing with power... takes the weight off you! Exclusive reversible tines convert from pick to sweep action for any soil condition. Impulse starting eliminates rope-tugging. Rugged 4.5 hp cast iron engine powers every garden operation... all with fingertip controls. Best for your garden... easiest for you... TIL-O-MATIC!

CHOREMASTER offers a tiller for every size garden **\$189.95**

Extra-rugged CHOREMASTER 3 H.P. Super Duty... \$154.95 with Reversible Tines and Power Reverse  
Popular CHOREMASTER 3 H.P. Heavy Duty... \$139.95  
CHOREMASTER 3 H.P. Special for suburban garden... \$119.95

**ALTONA FEED & SUPPLIES LTD.**  
Claremont - Phone Stouffville 210