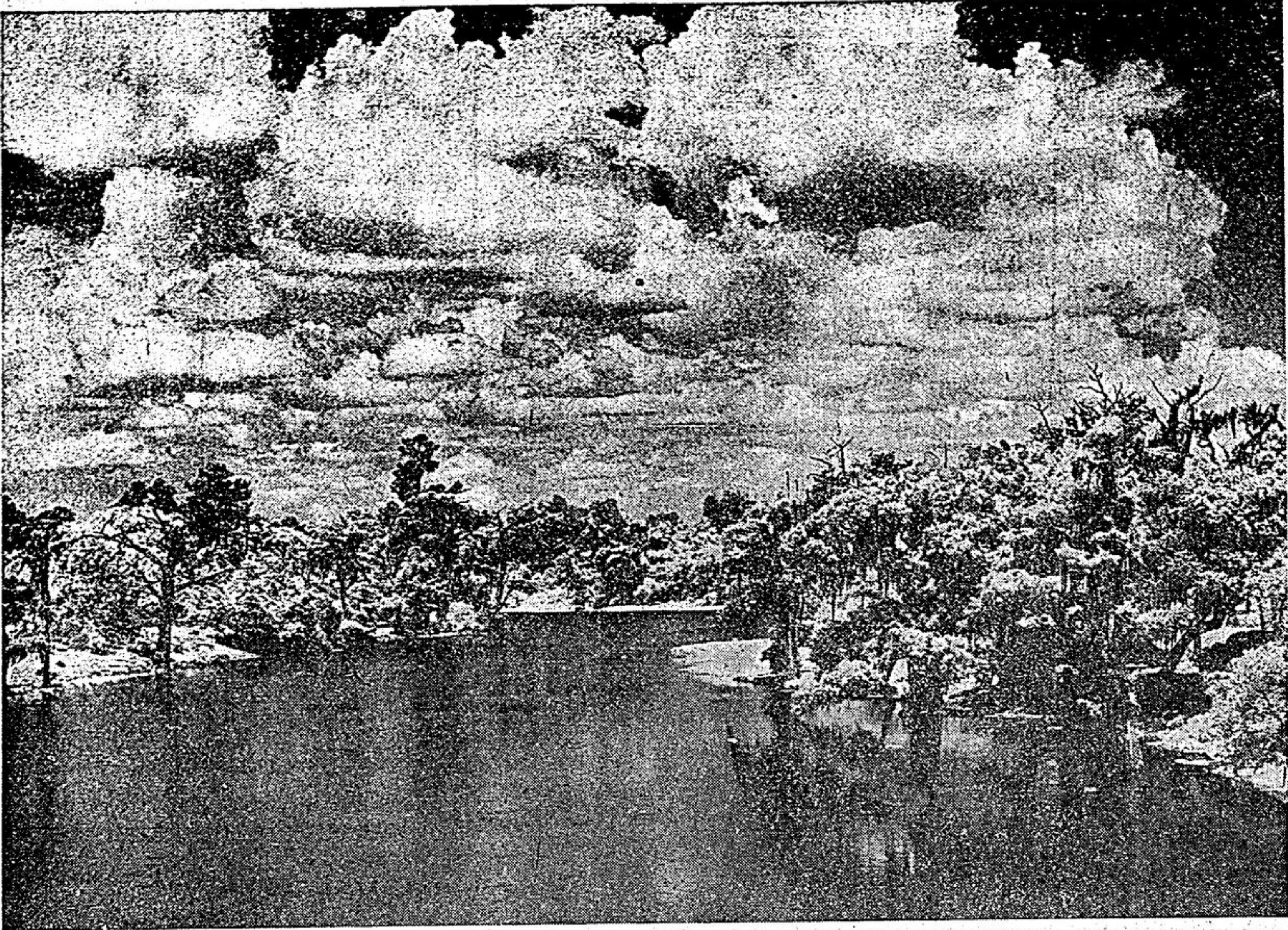
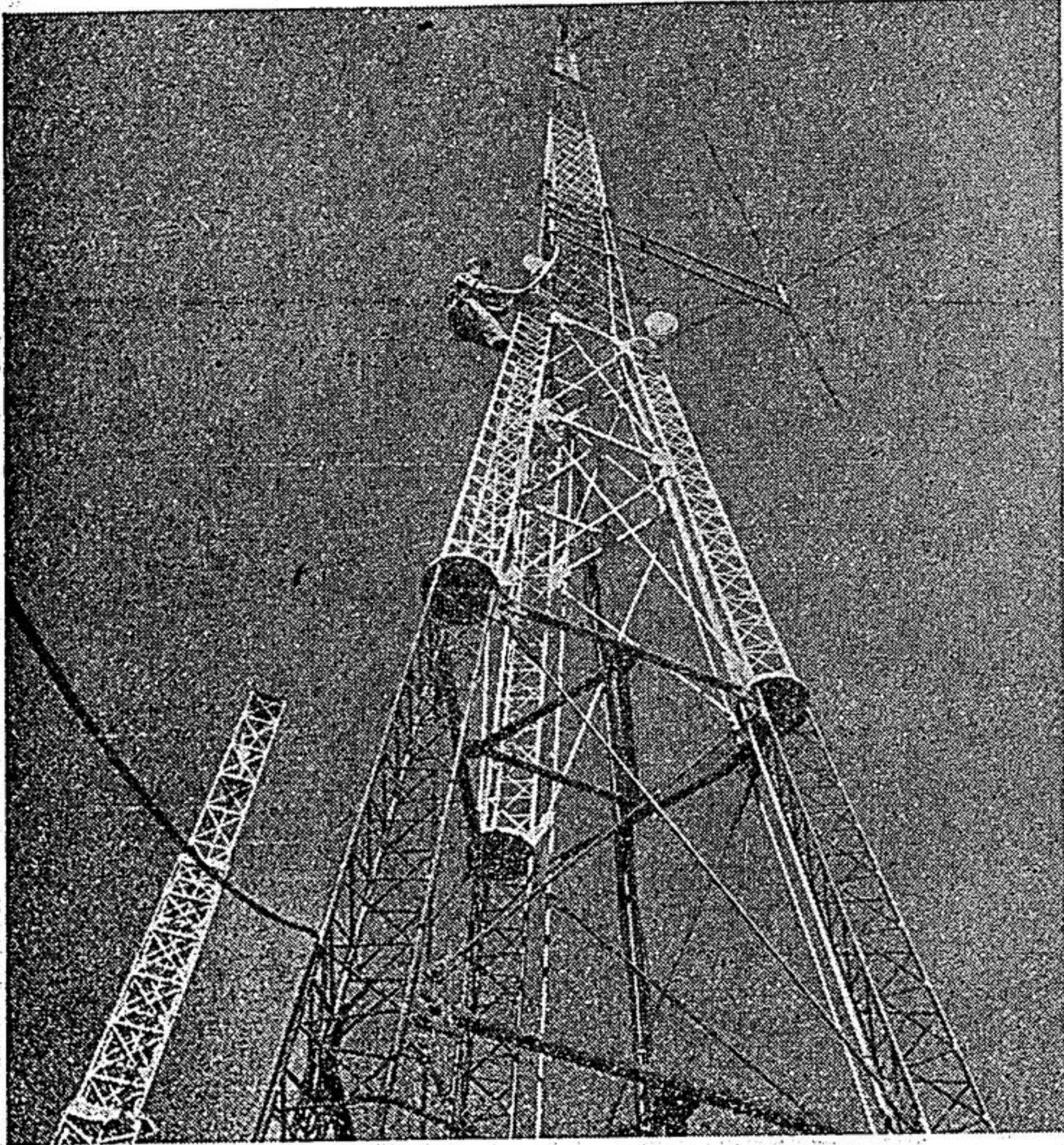


News of the World in Pictures



CLOUD-FILLED DAY IN FLORIDA—This scene, not far from Tallahassee, has a quiet appeal for every member of the family. It's typical of many other areas of Sunshine state.



MORE POWER FOR CIVIL DEFENSE—Thomas Korn takes care of a tall order as he adjusts the light on a 152-foot-high transmitting antenna atop the first U. S. nuclear-age Civil Defense control center near Wheaton, Ill. The center, located west of Chicago, will flash disaster alerts and orders in event of attack.



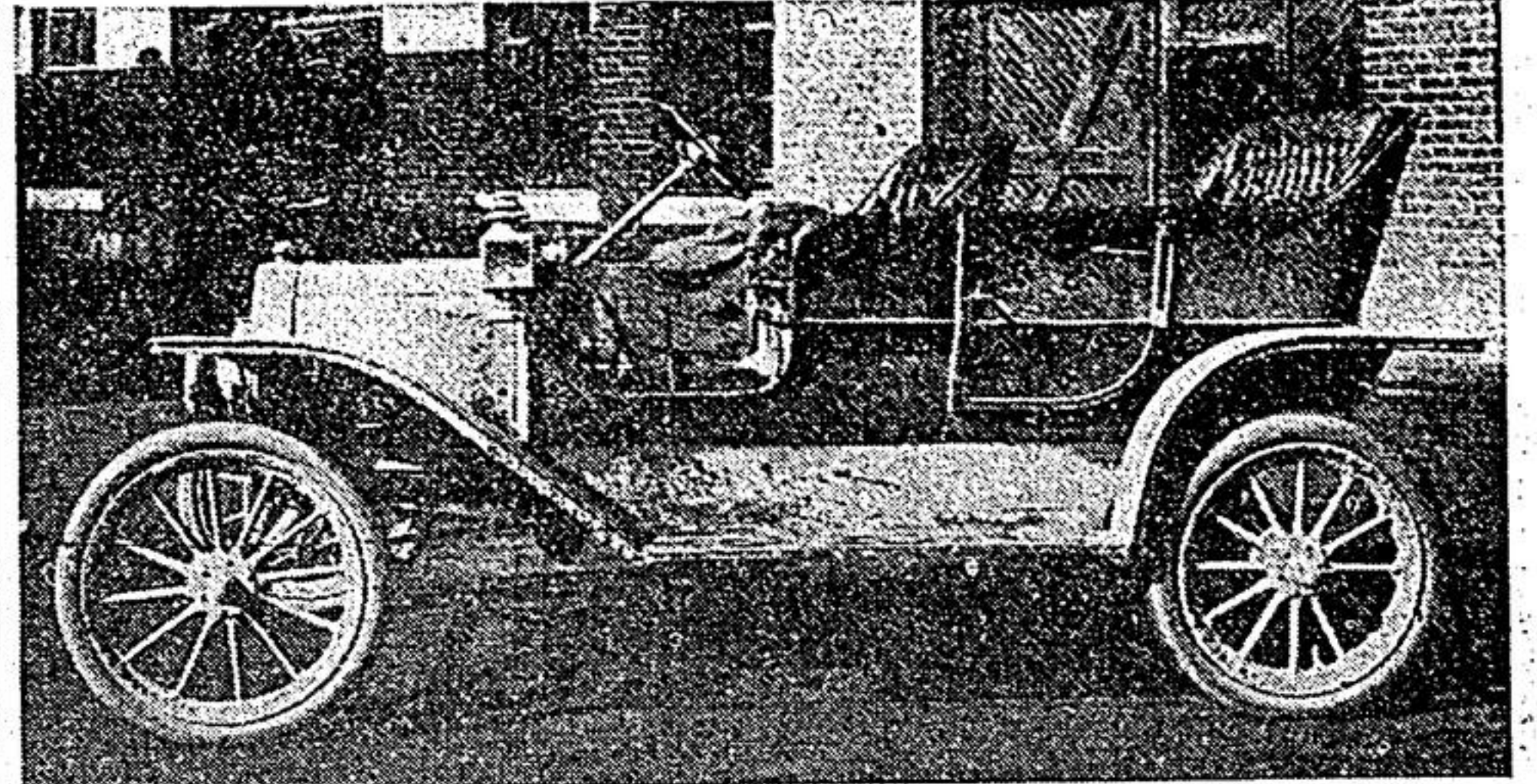
SOUVENIR OF THE PAST—Despina Theoharis examines a shell-encrusted jar which her grandmother brought back to Silver Spring, Md., from the Greek island of Samos. The "souvenir" turned out to be a jug dating back to 300 B. C.



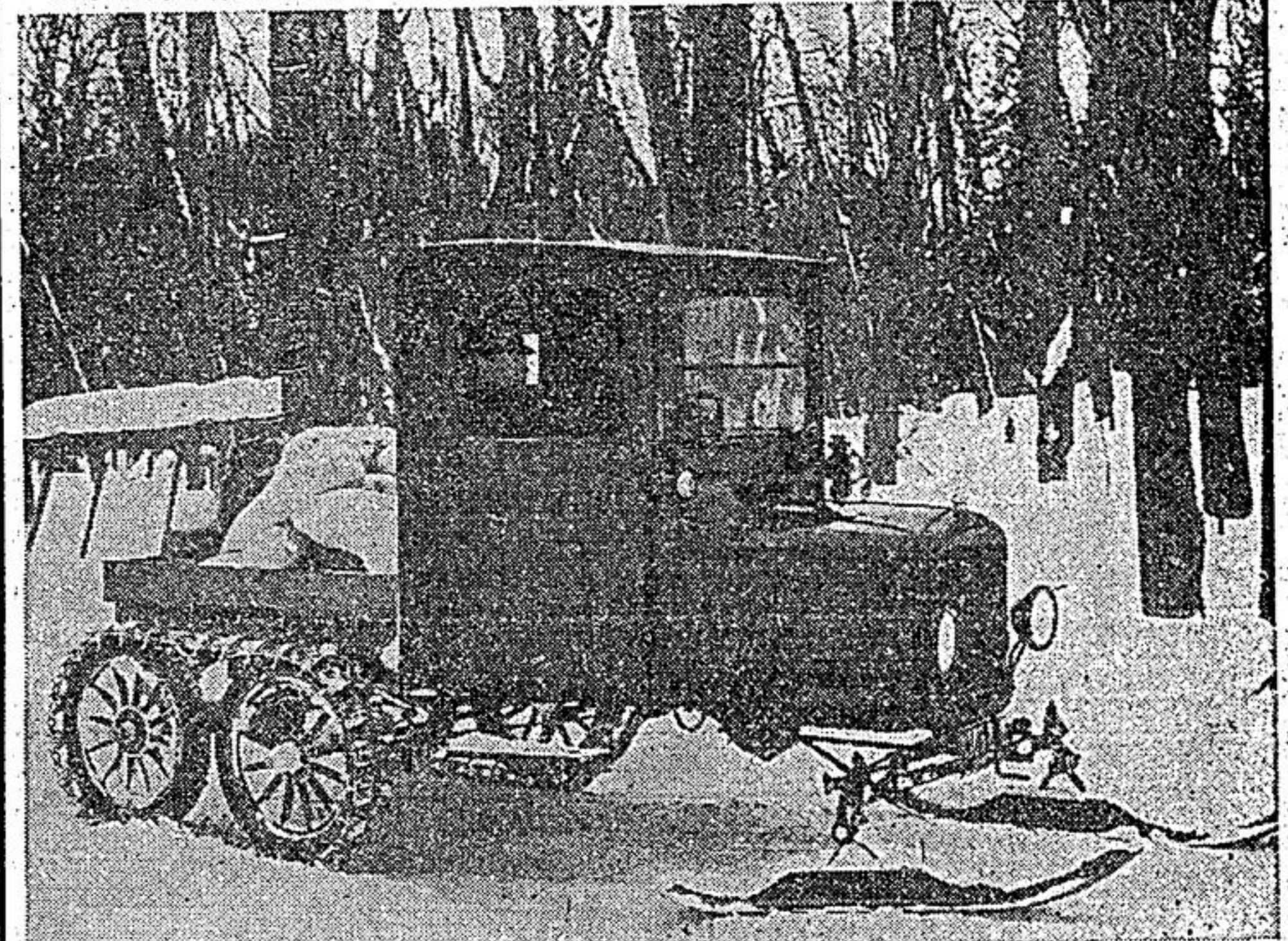
A STUDY IN SYMMETRICAL BEAUTY—High school students put on a mass gymnastic demonstration in Seoul, Korea, under the eyes of their leader. The mass gymnastics followed the opening of the Seventh Athletic Meeting, sponsored by Korean Students National Defense corps. Distributed by King Features Syndicate.

MODEL T TIME

THE MODEL T is a half century old this year. To commemorate the anniversary, the Ford Motor company recently produced the last Model T ever to be assembled in its modern Mahwah, N. J., plant. Back in those days, the Model T sold for \$850, but present worth is \$5,000. The "new" 1909 model is slated for display at the Edison Institute in Dearborn, Mich. In its nearly 19 years' span, there were 15 million cars turned out. There are an estimated 40 thousand still in existence. Avid collectors scour the countryside looking for cars and prowl the junkyards searching for usable parts. During its lifetime, the Model T had many uses. It was a portable power plant for the farmer. With attachments he could work his plow, cut wood, pump water and run butter churns. Several railroads fitted the cars with flanged wheels for tracks. The Model T was quite a buggy.



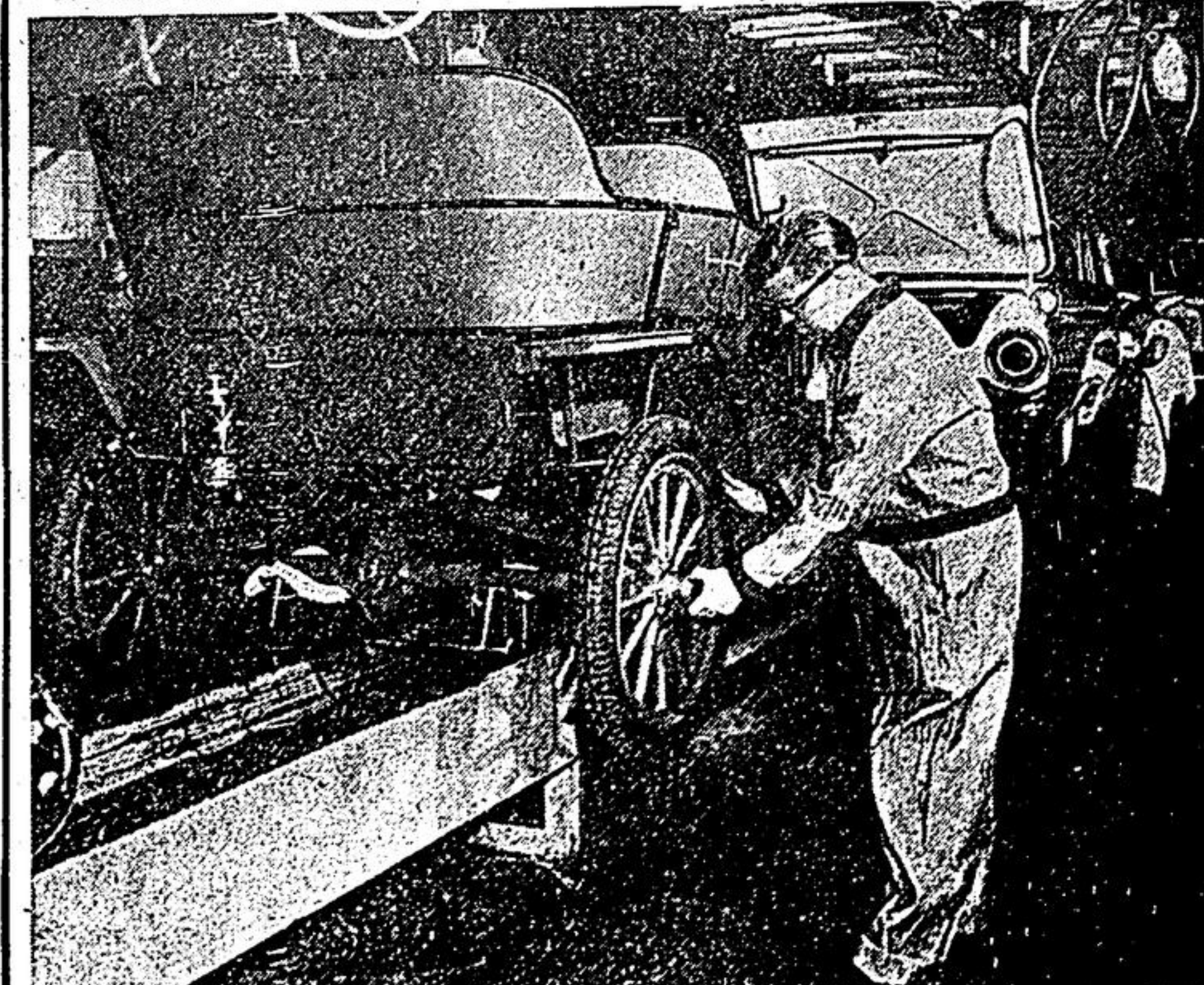
This was first Model T driven away from Detroit plant in autumn of 1908.



In the north woods, a "Snowmobile" was used with special undercarriage.



A Texan and his wife built this "station wagon" shortly after World War I.



This is the final Model T to be assembled on a modern production line.