

When the sun is hot take a glimpse at this winter scene - Nature displays one of her greatest creations.

7,000 Acres in Markham For Urban Development

By F. H. Brennan (Article 7)
The Official Plan for Markham Township allows for a total of approximately 7,000 acres to be used ultimately for urban residential development. This acreage represents 12% only of the total for the Township; the remainder is reserved for hamlets, farms and a few non-agricultural uses in a predominantly agricultural area.

The First Concession between Yonge Street and Bayview Ave. has been earmarked to bear the greatest load of this residential development. The Plan outlines a total of eleven 'Neighbourhood Units' to be developed within this Concession. The question naturally arises as to what Planning Board means by a 'Neighbourhood Unit'. The size of the Neighbourhood Unit varies from No. 4, bounded by Highway No. 7 and the CNR with 206 acres, to No. 1, bounded by Yonge Street, Steele's and Bayview Avenues and the Ladies' Golf Course with 740 acres. As may be appreciated from

these two examples, the boundaries of a Neighbourhood Unit are either substantial natural or man-made barriers.

The Planning Board is having prepared large scale maps for each Neighbourhood Unit. The Planning Director superimposes a suggested road pattern on these. This road pattern is aimed at establishing shopping centres, schools and churches away from the "through" arterial highways. To those of us used to the "grid" pattern of concession and side roads, the apparent irregularity of these roads may appear at first glance "new-fangled". In point of fact a considerable financial saving is effected in street construction and maintenance, because the local streets discourage through driving, and need not be as substantial or as wide as through roads.

Not all Neighbourhood Units are to be built up with the same density. One firmly established principle of the Planning Board as stated in the Official Plan, is "Urban densities will not be allowed to develop, unless serviced by water and sewers."

With this principle in mind and a knowledge of where water and sewers might practically be installed, and where this will not be economically sound for a long time, it is readily feasible to determine how many homes could be built in each Neighbourhood Unit; and from this figure judge fairly accurately the potential population that might ultimately live there.

The other day a patient returned a statement of his account to his physician with this notation: "You told me not to worry about anything; so I'm not worrying about being unable to pay this bill."

Village of Stouffville
Proclamation
1956 CIVIC HOLIDAY

Whereas at a meeting of the Council of the Corporation of the Village of Stouffville held on the 17th day of July, 1956, it was resolved:

"That Monday, August 6, 1956, be and the same is hereby fixed as the Civic Holiday for the current year, and that the Reeve be authorized to publish the usual proclamation in connection therewith."

These are, therefore, to make known that in compliance with the foregoing resolution I do hereby proclaim MONDAY, AUGUST 6, 1956, as the CIVIC HOLIDAY for the year 1956, of which all persons are hereby requested to take notice and govern themselves accordingly.

ELMER R. DANIELS, Reeve.
— GOD SAVE THE QUEEN —

Businessmen's Association Issues Invitation To Residents Of Musselman's Lake

The Stouffville Businessmen extend an open invitation to you, the residents of Musselman's Lake, to use the fine shopping facilities available in their community during your Summer Vacation.

You will find the merchants friendly and most anxious to serve you with quality merchandise at competitive prices. Make use of our beautiful park to entertain the entire family while the shopping is being done.

If you prefer shopping during the evening the stores will be open every Tuesday and Friday night until 10 p.m. for your convenience.

May we take this opportunity of thanking you for your past patronage and for making Stouffville one of the fastest growing centres in Ontario.

Sincerely yours,
TED TOPPING,
Chairman Businessmen's Association.

ROXY Theatre Markham

Evenings — Doors Open 6.30
Saturday Matinee 1.15

Thurs., Fri., Sat.
July 26 - 27 - 28

"The Square Jungle"

with
**TONY CURTIS and
ERNEST BORGNINE**
and on same program

"Day of Fury"

with
DALE ROBERTSON

Mon., Tues., Wed.
July 30 - 31, August 1

"World Without End"

with
HUGH MARLOWE
plus

"Body Snatcher"

with
LEVIN MCCARTHY

TELLS HOW TO DETECT CANCER QUACKS

The Cancer Society office regularly receives letters from anxious cancer sufferers who have been advised by friends of a doctor who can cure cancer with medicine. "Such friends are unwittingly helping to add another name to the list of those who have been victimized by quacks," Dr. R. M. Taylor, executive director, said. These "magic cures" can do untold damage, he added.

He explained that there is a pretty sure test for quacks. Any one of the following characteristics should be suspect:

1. His treatment is available only from himself.
2. His treatment bears his own name or that of a high sounding research organization.
3. His treatment is advertised.
4. He claims he is being persecuted by the "Medical Trusts".
5. His "cured" patients and greatest supporters have only his word for it that they had cancer in the first place.
6. He discourages or refuses consultation with reputable physicians.
7. His literature and arguments are most persuasive. Many intelligent people have been fooled. Sometimes he has absolute faith in his own cures and doesn't charge a fee.
8. His treatments are almost always simple, painless and

Markham Cow is Top Productivity Guernsey

Roy Moyer, Markham, Ont., was awarded the Silver and Seal Longtime Production Award by the Canadian Guernsey Breeders Association on the recorded Lifetime Production of his Guernsey cow SkyView Doreen M, who in eight lactations brought her production to date to 70327M-3514F, averaging 5790 M-493F. She had four 305 day records including 9753-528-10yr and 365 day records including 10903-545-6yr and 9455-460-5yr.

Skyview Doreen M has two R.O.P. daughters — Skyview Doreen's Buttercup: 8400-403-2yr-365 and Sky View Doreen's Daisy: 8540-451-2yr-365.

The dam of "Doreen M" is the untested cow, Dora H. and she is sired by Ornetta Rambler Duke, sire of seven R.O.P. daughters including Sky View Primula: 10470-553-5yr-365; Sky View Primrose: 8828-461-4yr-365 and Sky View Belle: 8183-475-6yr-305.

Also owned by Mr. Moyer, Sky View Blossom's Maid, paternal sister to Sky View Doreen M, was awarded a Silver Certificate for Longtime Production when in eight lactations she brought her recorded Lifetime Production to 56958 lbs. milk and 3021 lbs. fat. Five of her records were made in 305 days and her best record is 7569M-421F made at three years of age in 365 days. "Maid" has one daughter, Sky View Buttercup: 8138-436-2yr-365.

Poison Ivy Time Is Here Again

Rhus Toxicodendron. To many people, those two words would mean absolutely nothing, yet those people, at least many of them, are affected by it. Rhus Toxicodendron is the botanical name given to poison ivy.

Poison ivy is to be found growing under a variety of conditions throughout Ontario, wet or dry, shaded or exposed, and in any soil from pure sand or rocky ground to rich woods and fields.

On land that is farmed it is generally confined to borders and corners not reached by tillage. Leaves of Poison Ivy are borne alternately on the stem, and are compound, consisting of three similar leaflets as in the strawberry. Those of Virginia creeper are in fives. They are quite smooth, and even glossy and firm.

In early summer clusters of inconspicuous whitish flowers arise from the axils of leaves, and are succeeded by round, dull white fruits the size of a field pea, fleshy at first but later firm and dry, in which condition they remain on the leafless stem all through the following winter, rather ornamental and tempting sprays to people ignorant of their character.

Distressing Toxin
Poison Ivy has a distressing toxic action on the skin. The offending substance of the plant is an oil which is present throughout the root, stem, leaf, flower and fruit, and even to the easily detached hairs. Tearing or bruising of any part liberates the oil which comes in contact with the exposed parts of the body, either directly or by handling of contaminated objects. This oil may stick to clothing, especially boots and tools, or picnic baskets, and may be easily transferred to the hands and to the face and by handclasp to others who have not been directly exposed at all. The oil is also said to be vaporized by heat such as would be present in a bonfire or a smudge. The vapor thus formed may be carried by the smoke.

If contact has occurred with this plant, or with an article thought to be contaminated with its oil, the advice of a physician should be immediately sought. Cortison, Anti-Histamine, which may be obtained by prescription only, is recommended.

It is destroyed by cultivation, but unfortunately it nearly always grows in places where cultivation is impossible. Small patches can be eradicated by grubbing out the plants roots and all, with a pick and fork or pulling them out with gloved hands.

Poison Ivy is now a noxious weed under the Ontario Weed Control Act. This legislation states that it must be destroyed. Each municipal council through its Weed Inspector, is responsible for seeing that the work is done.

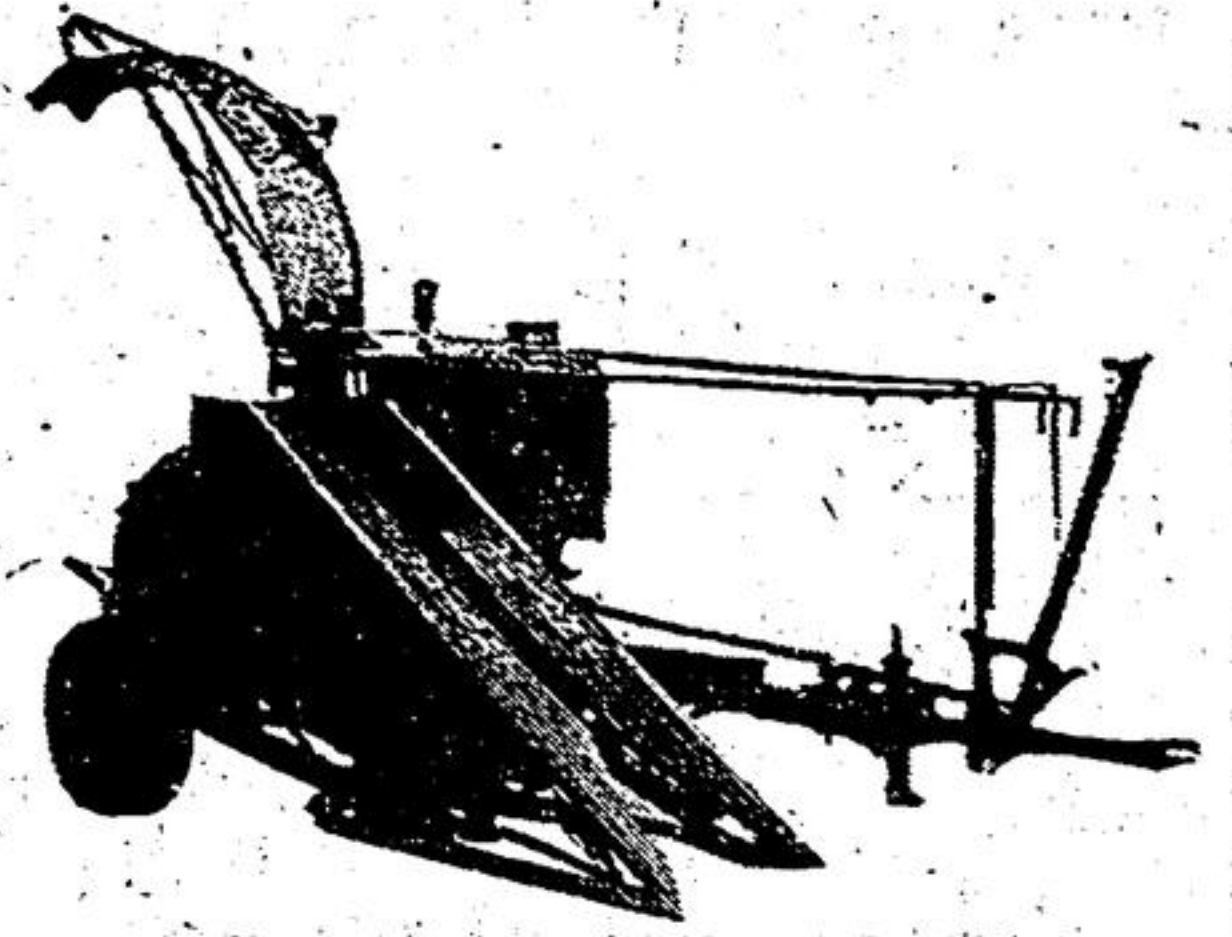
Another reason fishing is such a great pastime is that it causes a person to have temporary partial amnesia — it makes him forget he has to work for a living.

Folks are just itching to get away on vacation and will come back just itching.



A STEP UPWARD—French starlet Brigitte Bardot goes through her ballet lessons in London film studio where she was recently given her first starring role in a British farce, "Doctor At Sea." She's a singer and actress also.

The New DION Forage Harvester and Forage Blower



ROW CROP ATTACHMENT

Will harvest any corn crop, or other similar crops.



FORAGE BLOWER

Higher capacity, lower power, most compact and adaptable for any farm, large or small.

For information and literature, call your local representative

Harry Pugh

Phone 62902 Stouffville

FOR YOUR ROOFING NEEDS

See ...

B. V. Geromette

ROOFING, SIDING and GENERAL REPAIRS

— Flat Roofing A Specialty —
TIME PAYMENTS AT NO EXTRA CHARGE.

(Presently employed at the Stouffville Public School)

87 Stamford Sq. S., Toronto

Phone PL. 7-2100



Safety Tips for Summer Boaters

With the summer holidays in full swing at Musselman's Lake, one cannot emphasize too strongly the need for safety and common sense in the use of boats.

Here are some suggestions from the experts:

- Don't scramble aboard your boat with your arms loaded with fishing gear and lunch baskets.
- Don't jump into a boat.
- Don't overload your boat. It puts you in danger of being swamped by the wash of other boats.
- Don't travel without a safety chain or rope to your motor.
- Be sure to arrange your passengers so that their weight is evenly distributed from bow to stern.
- Be sure the motor is in neutral before starting if the motor has a gear shift.
- Boats without motors always have the right of way over power boats.
- Keep to the right in narrow channels.

OBEY THESE RULES AND CUT DOWN BOATING ACCIDENTS.

Space Contributed in the Service of the Community by
JOHN LABATT LIMITED.

