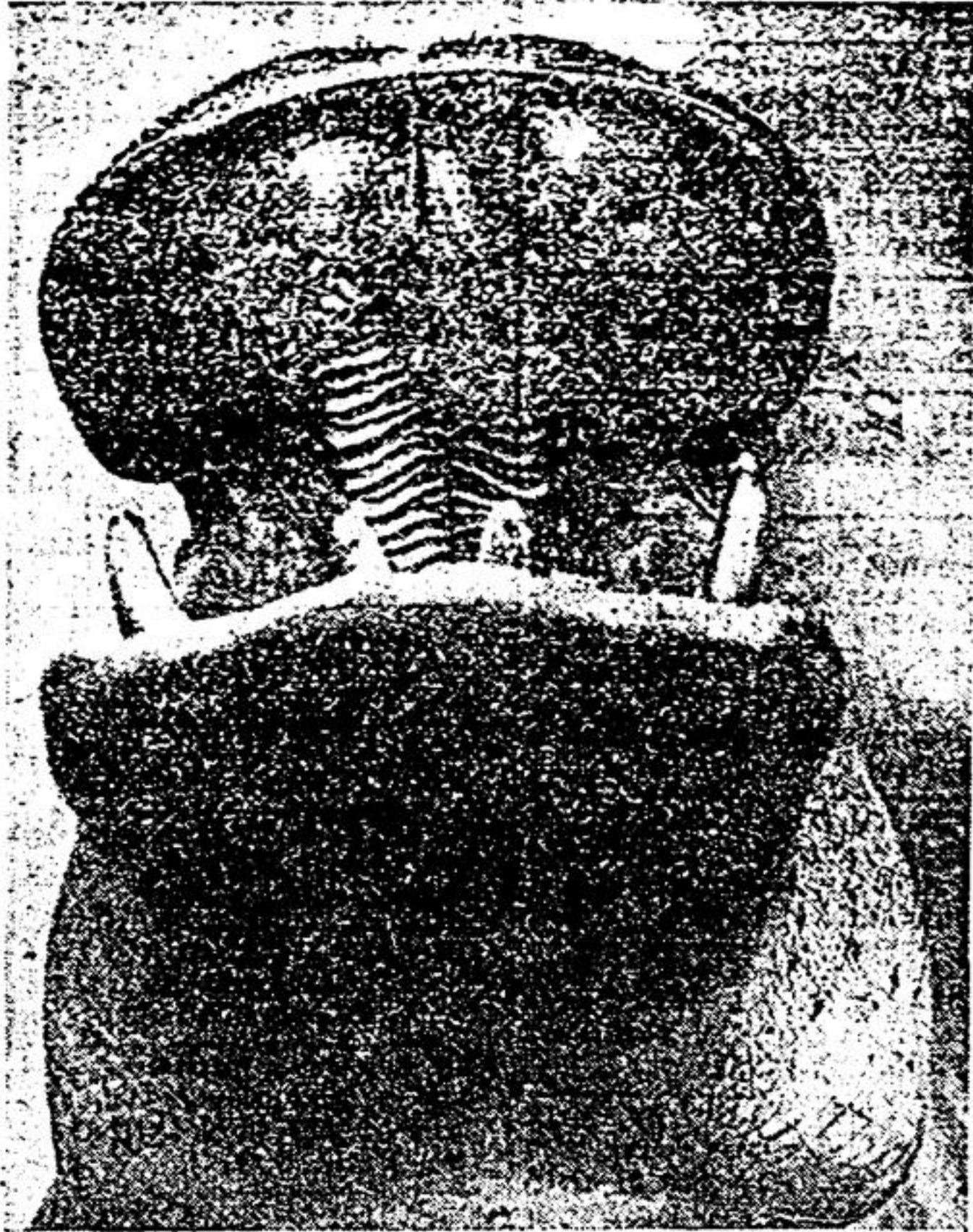


# News of the World in Pictures



**A BOY'S BEST FRIEND**—Three-year-old Stevie Wilson of Coeur d'Alene, Id., poses proudly with his cocker spaniel, Taffy, who won a gold medal at a Chicago banquet as most heroic dog in America. Taffy saved Stevie from drowning by racing for help.



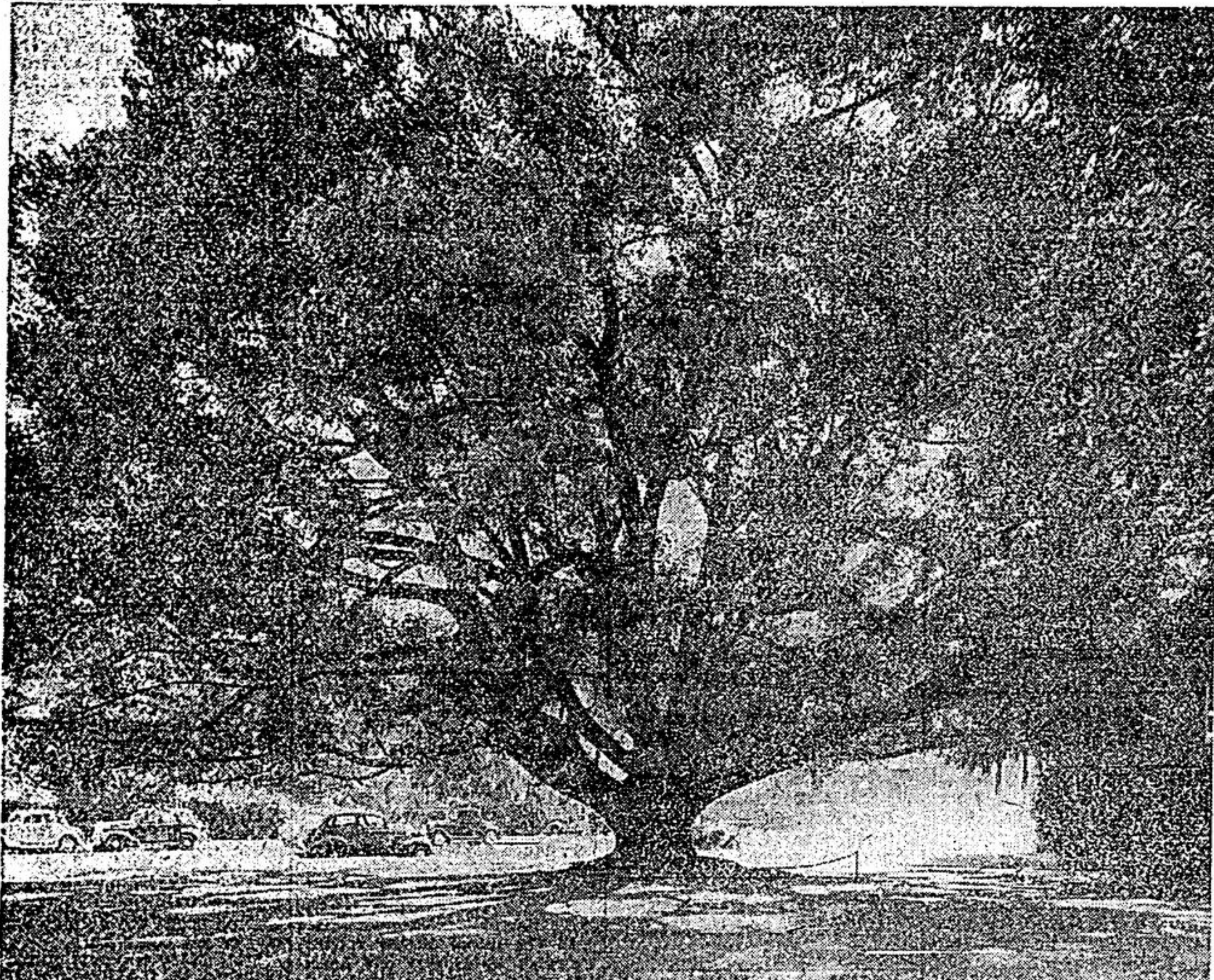
**FEEDING TIME**—This, in case you don't recognize it, is the open mouth of a very hungry hippo at the London zoo.



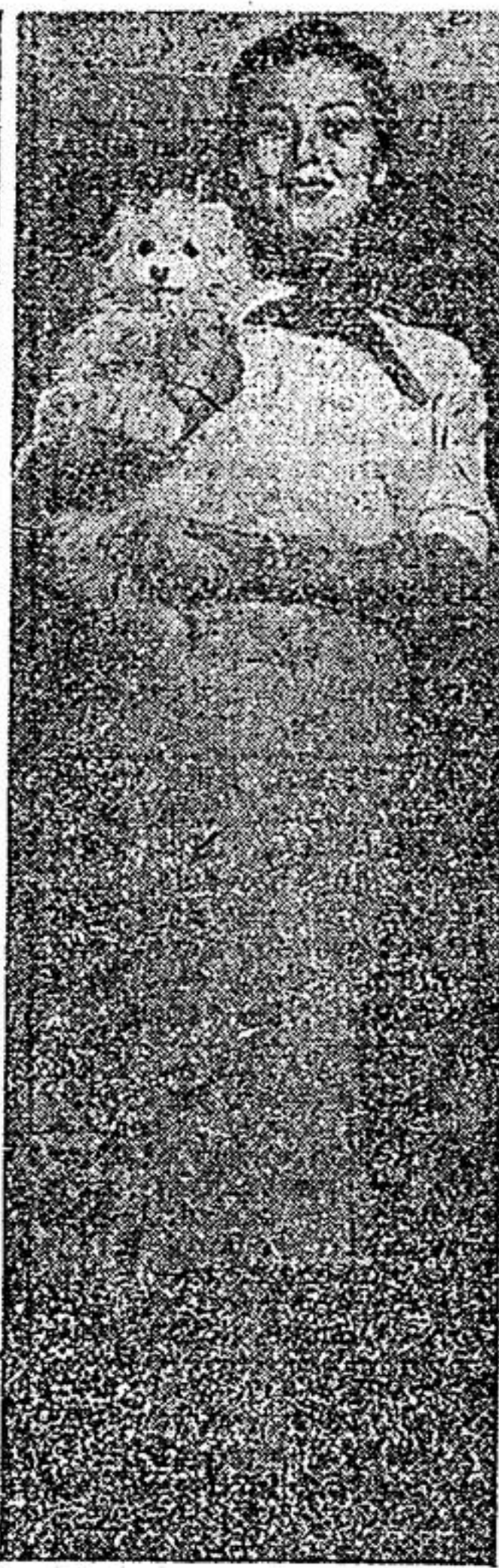
**AND STILL THEY COME**—With all of the competitors that Marilyn Monroe has, these German twins, Alice and Ellen Kessler, add to the list by doing a parody of her in a film.

## FOR CRISPER FOOD

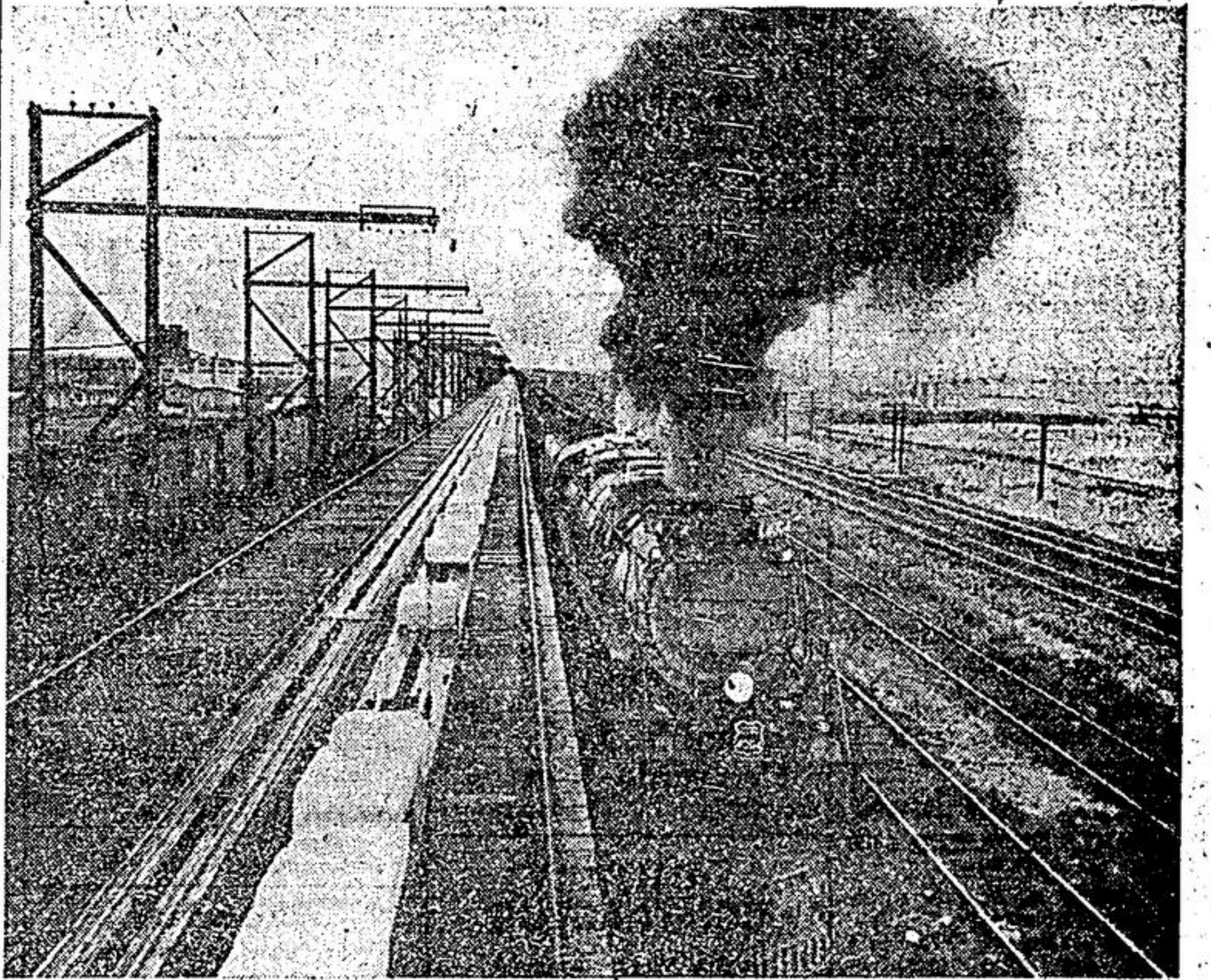
**C**CROSS-COUNTRY SHIPPING of perishable produce is being speeded up by means of machines that feed ice into refrigerator cars in a matter of seconds. At the Laramie, Wyo., plant, these 13,000-pound machines zip down a track and grab big blocks of ice, chopping them into 50-pound hunks. Machines then flip ice into bunkers at the end of each car. Next, two bar men chop up ice which may be sticking above hatches. Salt machine then automatically places correct amount of salt with the ice.



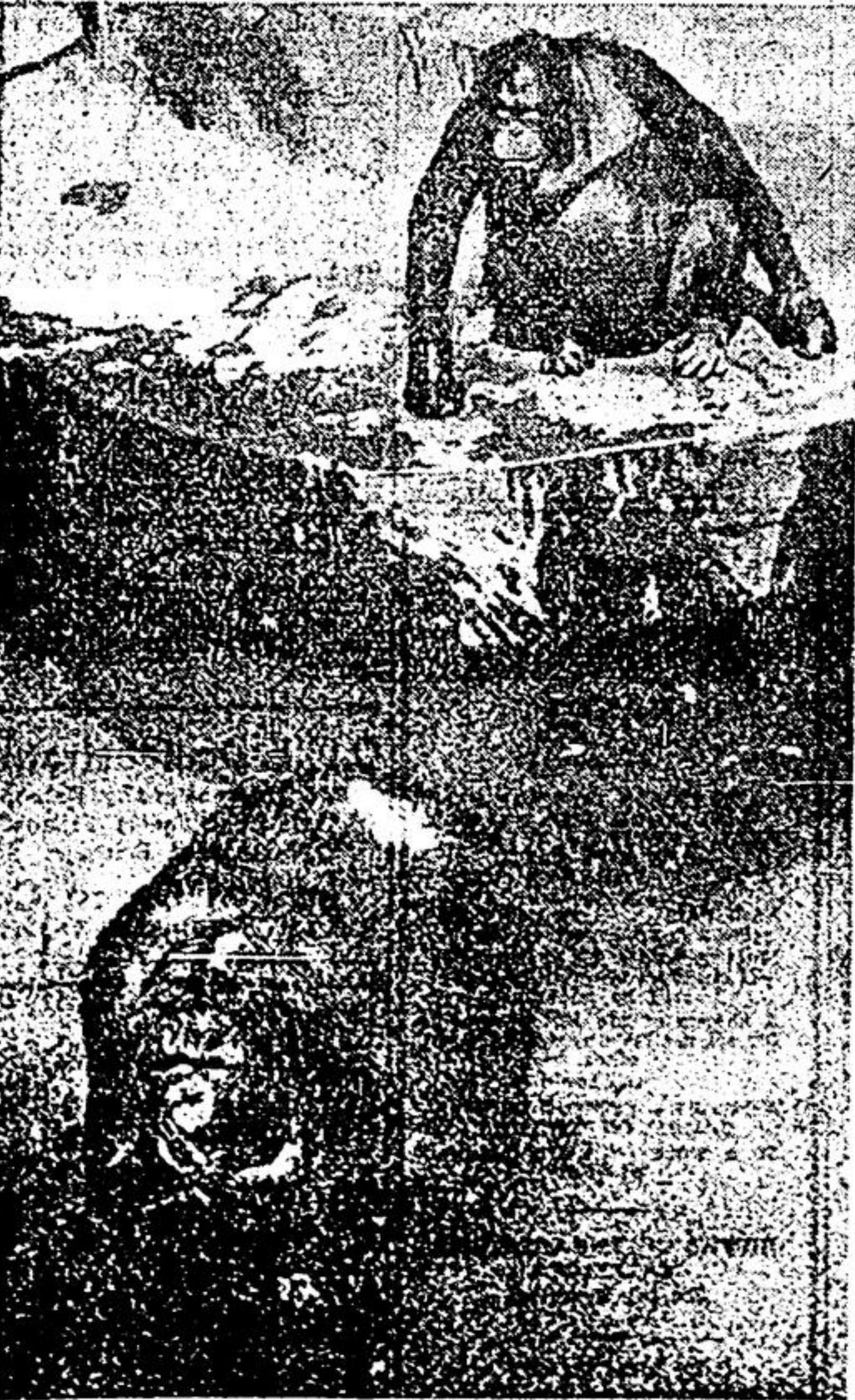
**IT'S LARGEST OF ITS KIND**—In Pomona, Calif., stands the world's champion camphor tree. From this kind of tree comes the camphor that goes into many of the preparations that the purchaser gets from his neighborhood drug store.



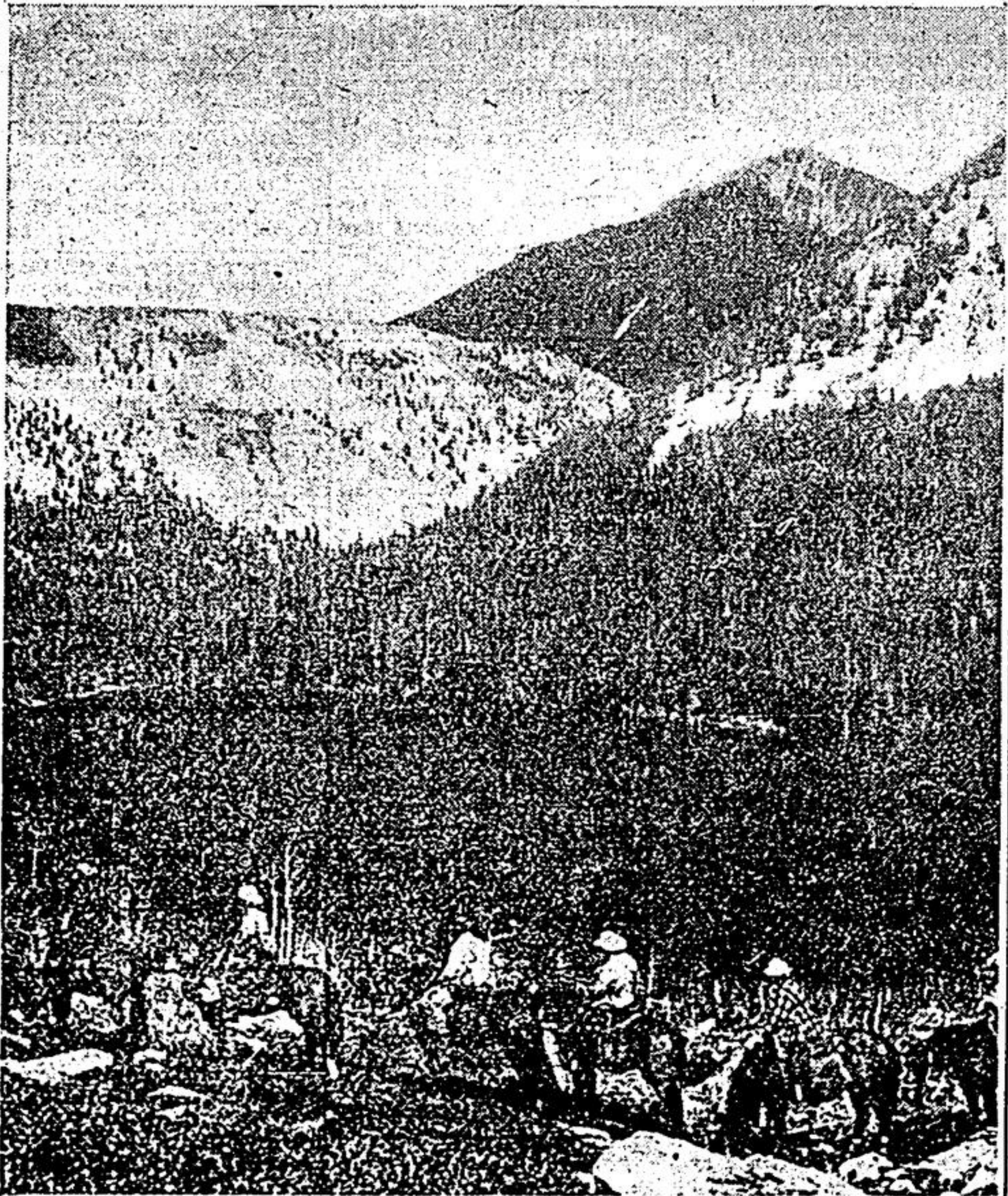
**LIKES WEST** — Machiko Kyo, Japan's top film actress and star of an Academy Award-winning film, prefers American clothes.



A lineup of 300-pound blocks of ice is ready. Produce is iced in about one-half hour.

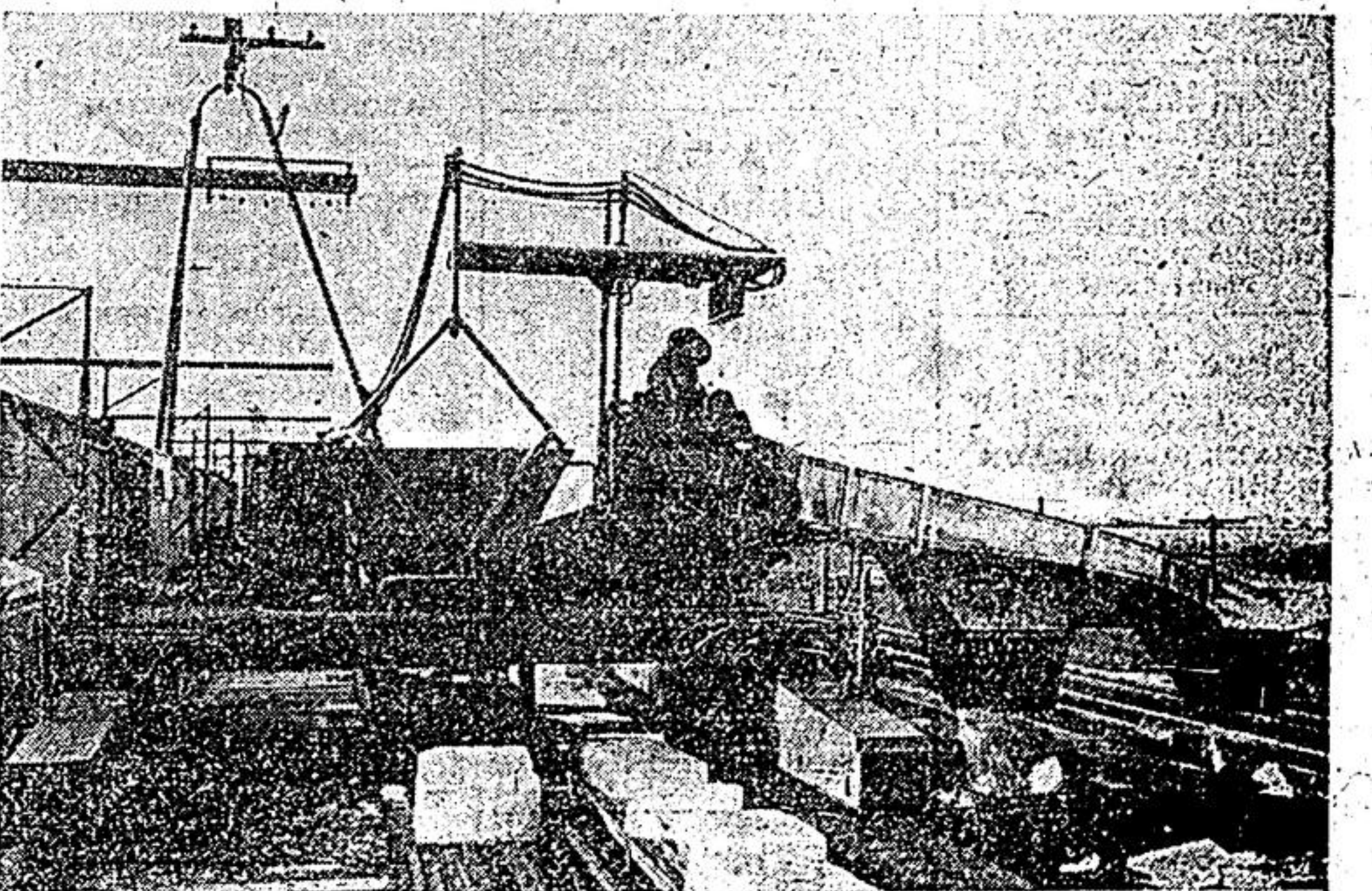


**TAKE YOUR CHOICE**—Andy and Sandra, orangutan playmates at Bronx zoo, have a difference of opinion, just as humans do, on how best to defeat the heat. Andy likes to rest quietly while cooling dip seems to delight Sandra.

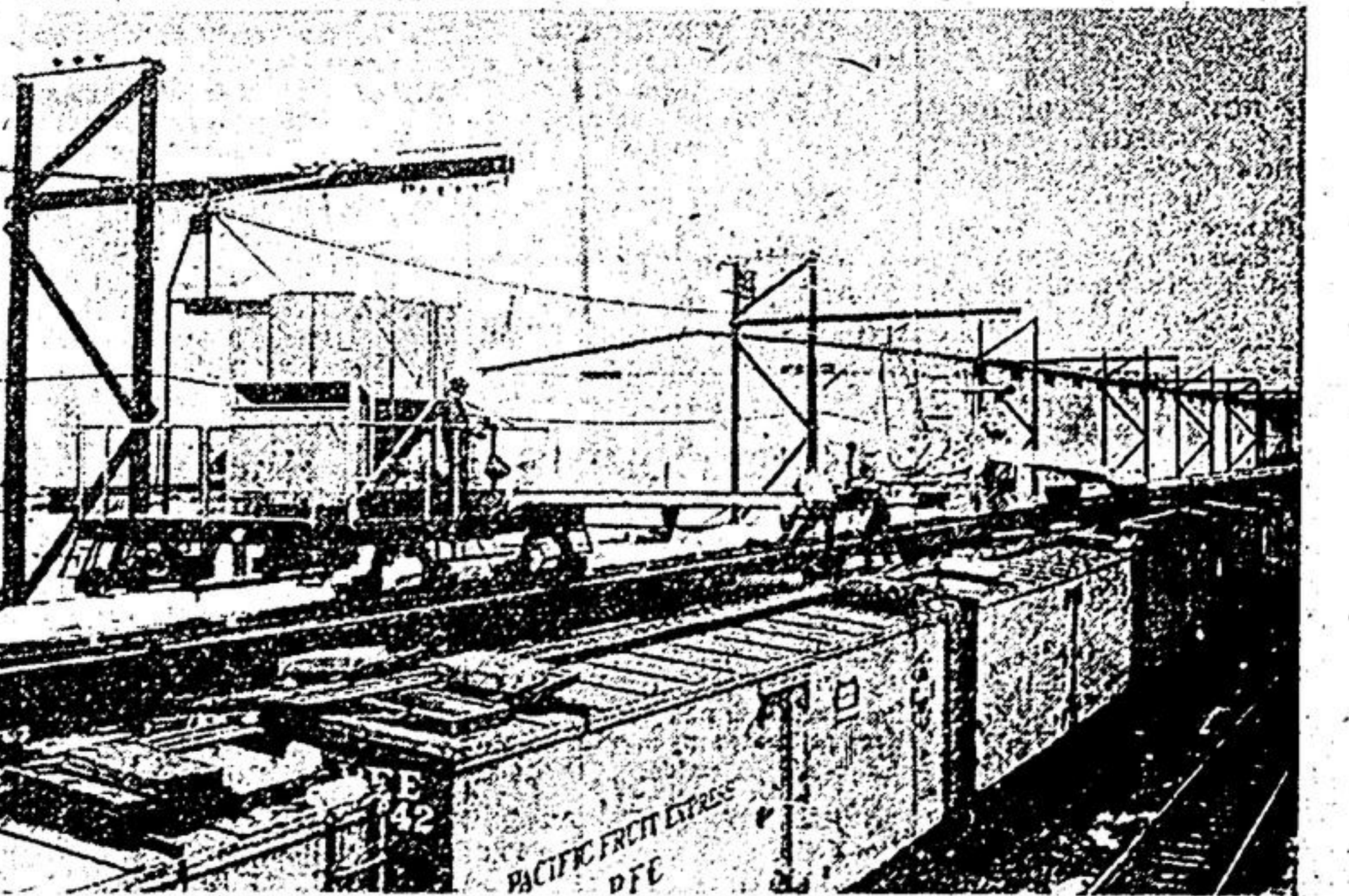


**CATCHES THEIR EYE**—Fishermen pause to gaze back on Rainbow lake, in Montana, after a successful expedition there. Beauty spot lies in the northern part of the state.

King Features Syndicate



Machine chucks ice into hoppers. It takes ice from conveyer, chops it into small hunks.



Men chop up pieces of ice above hatches. Salt is then added and hatches covered.