

HER BABY BORN IN STABLE XMAS MORN



A true "Christmas baby" is John Leenton Rehorst, who now is thriving in hospital at Clinton, Ont., after being born in a stable on Christmas morn. Mother of the nine-pound baby, Mrs. Rehorst (above), wife of a Dutch immigrant barely remembers the details of the unusual birth. Her husband had gone to the barn to milk the cows, and, when pains became

severe, she followed him. Fighting through knee-deep snow in darkness, she finally managed to reach the barn where, shortly after, baby was born. Mr. Rehorst then rushed his wife and new son to the hospital, driving the three miles over icy treacherous roads. Doctors said it was a "miracle" that the mother and child came through the ordeal so well.



Hello Homemakers! Our first resolution of the new year, namely, to read Margaret Aiken's "Hey Ma, I did It," and Claire Wallace's "Mind Your Manners" had to be shelved while we get on with the work a day business of answering queries. There seems to be numerous people who are learning to use their electrical Christmas presents. What a pity to receive appliances without instructions or a warranty. If this has happened to you, write the manufacturer for both the guide and the card. In many instances the instructions are all too brief so we hope our suggestions will help you.

TAKE A TIP

1. Read the manufacturer's instructions carefully and follow them exactly to get the most efficient use and longest

possible service from your equipment.

2. If you hear an ominous grind in the electric motor or note that the appliance is not working properly, stop it immediately and check to see whether service or adjustment should be made.

3. Decide on the repairs you can do and the service of the electrician.

4. Plug the electric cord into appliance first, then into outlet.

5. Disconnect the appliance by grasping the plug at the outlet — don't yank the cord.

6. Set all controls according to manufacturer's instructions.

7. Never put heating units, cords or motors in water.

ELECTRIC DISHWASHERS

1. Dishwashers should be installed with a convenient cut-off valve. If there is not a tap

on your unit you should be able to turn off the water at the main supply line. This should be clearly marked, so that anyone can find it quickly.

2. If dishes do not come out of the dishwasher clean and shiny, then next time see that the dishes are scraped well, the water piping hot 150 degs. and the proper cleaner is used.

3. Soap powders or combination of soap and detergent prevents washing actions of the machine. To prevent spots on glassware and silver, the water should be softened using a calgonite powder or the crystals tied securely in a bag if there is no container in the machine. Watch for dishwasher powders on the grocers' shelves.

4. To save costly service use caution when putting cutlery in the silver basket; set securely in place with handles down. If one piece gets pushed over into the impeller there is trouble. By the way we do not place hollow handled sterling pieces in the machine.

5. If a film appears on the dishes the condition may be due to the mineral content of the water. Check on amount

of softener to use by measuring the powder into 2 qts. of water. It should feel slippery as you pinch it. To remove film rub all parts except gold paint with bon ami. In fact we suggest giving your dishwasher the benefit of a good deal by cleaning dishes with mild cleanser before you use it.

ELECTRIC IRONERS

1. Practice ironing flat lines first then put one piece after another through the machine without raising the roller — mind your fingers. If you iron on clothes without folding (where possible) the fabric will last longer and you will be making wise use of ironer.

2. If clothes have to be put through repeatedly to get them smooth then fluff the padding and decide whether the fabric is damp enough. A sponge squeezed out of hot water and rubbed over dry parts will help.

3. If the ironer cover is scorched at one end, check your ironing technique; you may be favouring the left side. Try to use both sides evenly.

4. Wash the muslin cover once a month and bleach if necessary.

5. If too much soap has been left in the clothes the iron will produce a yellow stain.

THE QUESTION BOX

Mrs. H.F. asks: How long should it take to make 8 cups of coffee in an automatic percolator?

Answer: It may require 15 minutes since it is necessary to use cold water. Only a small amount of electricity is used and it is automatically turned down to keep the coffee hot as soon as it is percolated.

Miss P.B. asks: How can we prevent waffles from sticking to the new iron which is seasoned with salt-free oil?

Answer: We wonder if you are preheating the waffle iron with the grids open—they should be closed and it usually requires four minutes to preheat, then four minutes to bake waffles or until steam stops coming from the edge.

Mrs. T.R. asks: How do you prevent bread from twisting in a new toaster?

Answer: No doubt you have an automatic toaster and using fresh bread which should be chilled to prevent warping.

FORSEES GROWTH OF CCF PARTY IN 1954



Donald C. MacDonald, the new CCF provincial leader in Ontario, seen above with two of his three children in Ottawa, has made many plans for his party in 1954, of which the expansion of the party's dues-paying membership, increasing its educational activities and establishing a firmer financial basis for the party in Ontario, are just a few. The six-foot, 200 pound former national CCF organizer sees in the months ahead, three maj-

or needs for which his party will campaign provincially. The major issue he said, is hospital insurance. "It is working in Saskatchewan and in B.C. now that it isn't a political football, it is working better and better. We need it in Ontario." Another thing is a better deal for the farmers. The third major item is a new deal in financing education. "It just can't be met on the property tax basis," he said.

CROP IMPROVEMENT CONVENTION PROVIDES EXCELLENT PROGRAM

Carefully designed to place emphasis on all subjects relating to field crop and soil management, a particularly comprehensive program has been prepared for the Annual Convention of the Ontario Soil and Crop Improvement Association which opens on January 26th and continues to January 29th.

A.H. Martin, Secretary Treasurer of the Association and Director of the Field Crops Branch of the Ontario Department of Agriculture, said today that subjects under discussion would include soil management, drainage laws, cash and feed crops, tillage practices, pasture improvement, new cereal varieties and the quality production and marketing of potatoes and turnips. In addition new trends in agriculture and a forecast of conditions for the present year will have an important place in the discussion.

The complete program is now available and may be obtained from the Agricultural Representatives in the various Counties or direct from the Secretary, Field Crops Branch at the Parliament Buildings.

COUNTY REGISTRY OFFICE HAD RECORD BUSINESS DURING 1953

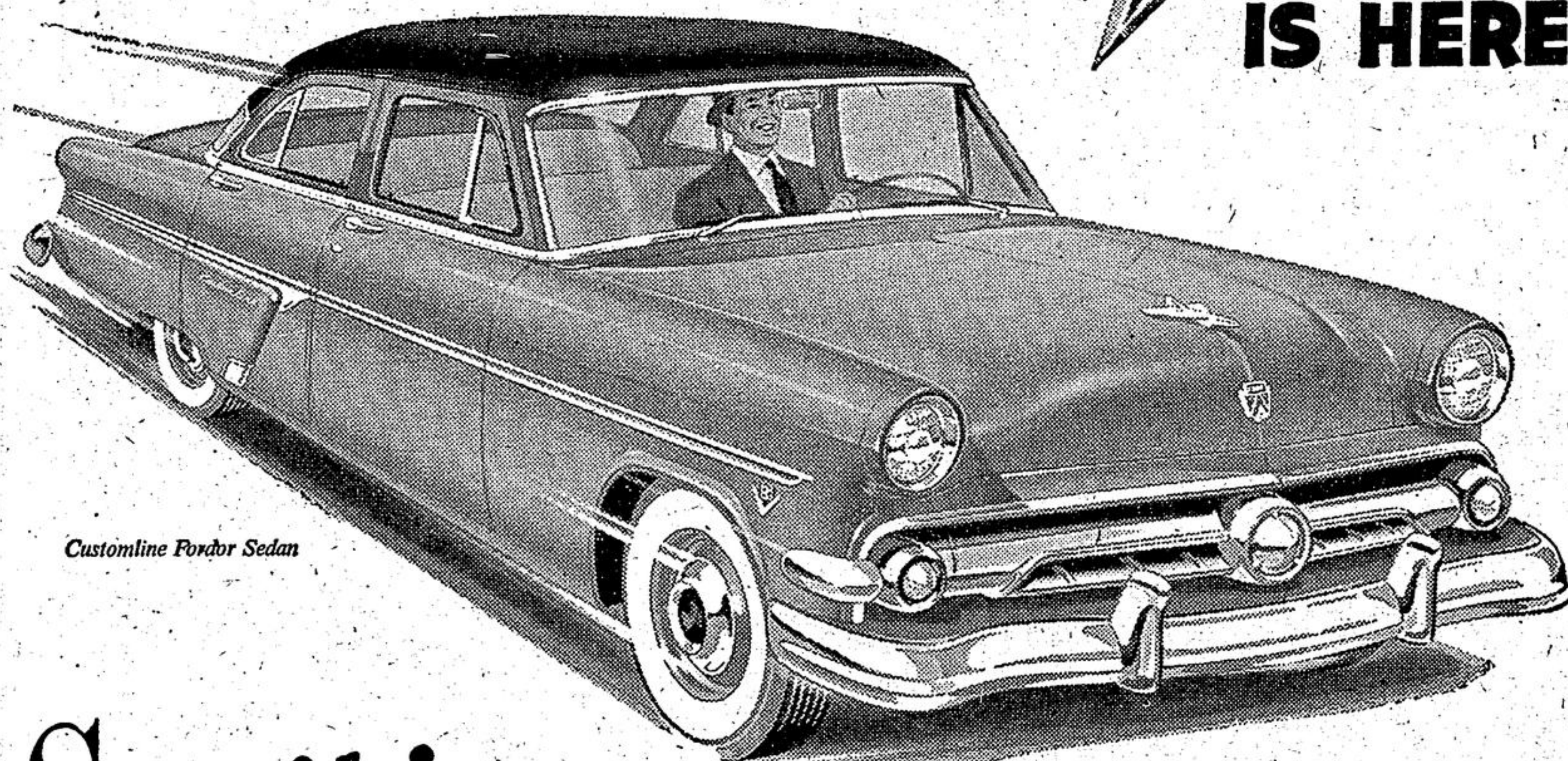
The rapid growth of the City of Oshawa, the Town of Whitby and the Improvement District of Ajax, and of other Ontario county municipalities, is reflected in the fact that the Ontario County Registry Office handled in 1953 the largest volume of business in the history of the county.

The thousands of transactions recorded at the office, where the staff is working in very cramped quarters on account of the construction of the new wing to the south, according to Registrar J.M. Roblin covers many new subdivisions, most in the south end of the county, and real state deals involving business and residential property and farms. The year 1953 was a banner one for real estate and the outlook for an even greater volume of business in 1954.

Mr. Roblin will compile a report of the year's business, which in due time will be handed to the County Council.

When the average husband puts his foot down he's probably trying on a new pair of shoes.

WORTH STILL MORE IN '54 NEW FORD



Customline Fordor Sedan

IS HERE!

See it! NOW ON DISPLAY!

STILL MORE POWER

for greater smoothness, more flexibility and safety
NEW, MORE POWERFUL V-8 ENGINE
backed by over 20 years' experience in building V-8's

STILL MORE STYLE

Even more beauty-leader models to choose from in 3 great lines

STILL MORE DRIVING EASE

offering Power Steering* Power Brakes* Fordomatic Drive* and a host of other "worth-more" features

(*White sidewall tires, fender skirts, radio, Power Steering, Power Brakes and Fordomatic Drive optional at extra cost on certain models.)

It's HERE—the brilliant new 1954 Ford V-8... with exciting new style distinction... new, wider range of models... new V-8 power... new easy-driving features... to make Canada's "worth-more" car worth still more in '54.

The new 120-Hp. V-8 engine in all Customline and Crestline models is the finest V-8 ever to power a Ford. It offers more power than ever before—and that means more smoothness, faster acceleration, greater safety and flexibility in all your driving! The famous 110-Hp. Strato-Star V-8 in all Mainline models, tested over millions of motoring-miles, combines smooth, dependable V-8 power with amazing fuel economy. Both engines are the products of over 20 years' experience in building V-8 engines...

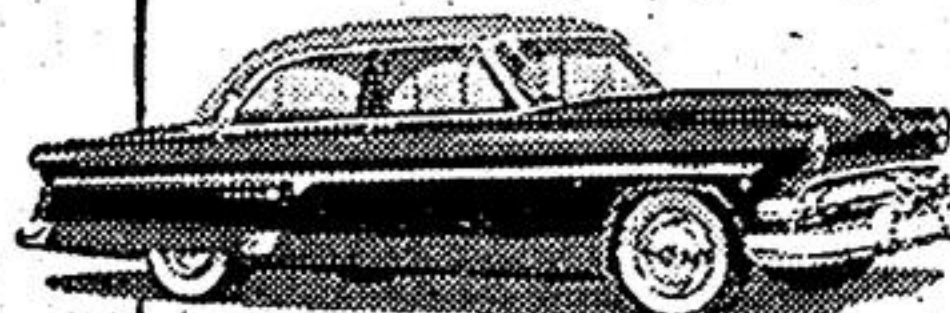
more than all other manufacturers combined!

Ford sets the pace again in '54 with brilliant new beauty of styling, inside and out. The completely new Crestline Skyliner, with its top of transparent Plexiglas, and the new high-fashion Crestline Sedan, interpret the latest innovations of modern motoring.

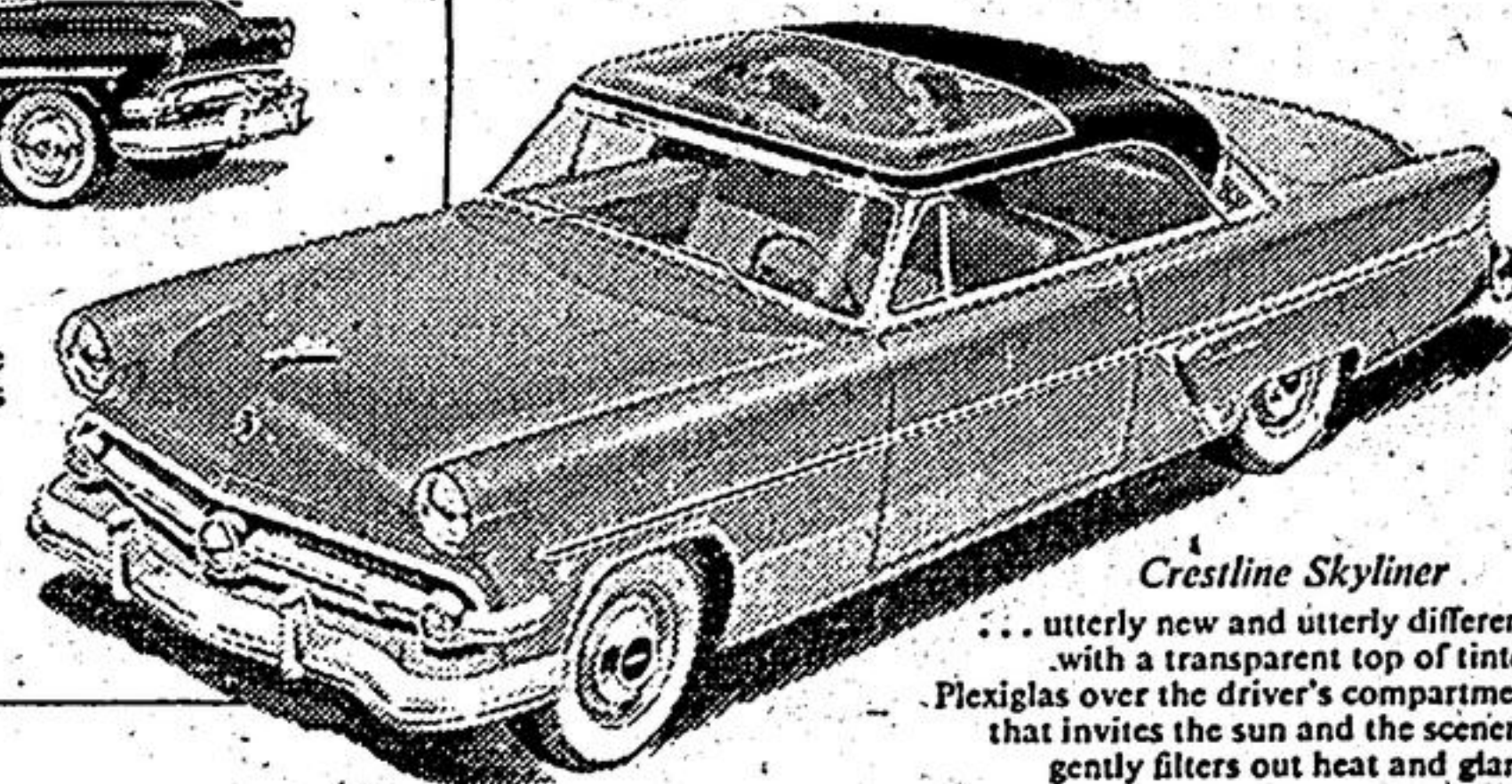
Ford for '54 offers "Master-Guide" Power Steering*, Power Brakes* and, of course, fully automatic Fordomatic* Drive to make all driving easy and effortless. Ford's deep-down riding comfort rivals that of far more costly cars.

Your Ford Dealer invites you to test-drive the new '54 Ford now. See for yourself why Ford V-8 is worth still more in '54.

PRESENTING 2 THRILLING NEW Crestline MODELS



Crestline Sedan... the all-new style-leader in its field whose luxurious appointments will make it perfectly at home in the smartest circles!



Crestline Skyliner

... utterly new and utterly different, with a transparent top of tinted Plexiglas over the driver's compartment that invites the sun and the scenery, gently filters out heat and glare!

YOUR FORD DEALER INVITES YOU... COME IN! ARRANGE A TEST-DRIVE!

Stouffville

R. H. MURPHY LTD.

Ontario