

Auction Sale

FARM STOCK
30 Head of Holstein Cattle
50 Hogs, Hay, Grain, Ensilage
IMPLEMENTS
Tractor, Threshing Machine, etc.
**AT LOT 22, BEAR CON. 9,
PICKERING TOWNSHIP**
on Townline Between Uxbridge
and Pickering

THURS., MAR. 26

The Property Belonging to
ROY TINDALL
CATTLE

Holstein Cow, fresh, calf by side
Holstein Cow, fresh, calf by side
Holstein Cow, full flow, bred
Jan. 7
Holstein Cow, full flow, bred
Jan. 10
Holstein Cow, springer
Holstein Cow, springer
Holstein Cow, springer
Holstein Cow, bred in Oct.
Holstein Cow, full flow
Holstein Cow, springer
Holstein Cow, bred in Oct.
Blue Cow, due in April
Holstein Cow, fresh, calf by side
Holstein Heifer, bred Feb. 17
7 Holstein Heifers, due to fresh-
en next fall
7 Yearling Holstein Heifers
10 Holstein Calves
All 1- and 2-year-olds vaccinated
and raised on property.
Most of the cows are vaccinated.
The above are young and of good
quality.

YORK & TAM, HOGS
25 Tamworth Chunks
20 Tamworth & Yorkshire
Chunks
4 Young Sows, bred
7 Tamworth & Yorkshire Sows,
due in April

HAY & GRAIN
Quantity of Hay in Mow
About 200 Bales of Hay
About 400 Bushels Mixed Grain
Quantity of Ensilage

IMPLEMENTS
L.H.C. Tractor, W-4 on rubber,
in good condition
Dominion Threshing Machine
with grain thrower, in good
running condition
L.H.C. 3-furrow Ace Bottom
Plow, good
M-H 8 ft. cut Binder, good
Tractor Manure Spreader, L.H.C.,
near new
Tractor Double Disc, L.H.C.
Set Sloop Sleighs & Bottom
Rubber Tired Wagon & Rack
Buck Rake, 1938 L.H.C., good
condition
McDeering Mower, 6 ft. cut, oil
bath
Set of Spring-tooth Harrows
4 Sections of Drag Harrows
5 Sections of Drag Harrows
Feed Cart, new
13 Bags of Cement
Low Wagon on steel
M-H Seed Drill, 13 disc
L.H.C. Side Delivery Rake, new
Turnips Drill, Steel Stone Boat
Scuffer, 3-drum Steel Roller
100 ft. 6-in. Drive Belt, good
Extension Ladder
No. of Grain Bags & Sacks
Doubletrees, Neckyokes, and
many articles not mentioned

No reserve as farm sold
Sale at 12.30 p.m.
LLOYD TURNER, Clerk
A. S. FARMER, auctioneer.

Auction Sale

LIVE STOCK
Cattle, Horses, Pigs, Poultry
IMPLEMENTS
Hay, Grain & Furniture
**AT LOT 7, COX. 3,
WHITCHURCH TOWNSHIP**
2 Miles north of Gormley

WED., MAR. 25

The Property Belonging to
HARVEY TAUN

CATTLE
Holstein Cow, due June 10
Holstein Cow, due May 10
Holstein Heifer, fresh, calf by
side
Jersey Cow, due April 20
Holstein Heifer, 1 year old

HORSES
Bay Mare, 10 years old
Bay Mare, aged
Bay Mare, aged

HAY & GRAIN
Quantity of Hay to be sold in
mow
About 250 Bushels of Oats
PIGS
Yorkshire Sow, due April 20
Yorkshire Sow, due April 25
4 Fat Hogs
12 Yearling Hens

IMPLEMENTS
L.H.C. Binder, 7 ft. cut, in good
condition
Deering Mower, 5 ft. cut
M-H Seed Drill, 13 spout
M-H Cultivator, stiff-tooth
M-H Horse Rake
4-section Harrows
Single Plow, No. 77 Fleury
Single Plow, No. 21 Fleury
Low Steel Tired Wagon, in good
condition
Cutting Buggy
Set Sloop Sleighs
Large 2-wheel Trailer
Jay Rack, 15 ft. Wheelbarrow
Cockshutt Root Pulper, good
Chatham Fanning Mill & Bagger
Renfrew Separator
Stone Boat
Feed Scales, 2000 lb. cap'y
Draw Rope
Steel Pig Trough
Set Hay Rack Sills
Logging Chain
Large Feed Box
Cyclone Seeder, new
Gem Electric Fencer
20 Rods Barbed Wire
Chicken Wire
Forks, Hoes, Doubletrees, many
other articles
Quantity of Household Furni-
ture, such as Organ, Oil
Stove, etc.
Terms: cash
Sale at 1 p.m.
ESLIE HARPER, Clerk
A. S. FARMER, auctioneer.

BLOOMINGTON

A Christian Endeavor Musi-
cal evening will be held in
Stouffville Christian church
on Friday evening, March 27.
A special offering will be tak-
en to send to the Christian
Endeavor Executive. Please
note the change of date.
Sunday marked the closing
services in Sunday School and
Church here of the Misses
Wilson and McCaul of the
Faith Mission. As well as con-
ducting a service of song and
story each afternoon at the
public school, they visited at
the homes in the community
making their headquarters at
the home of Mr. and Mrs. E.
Lemon.

Mrs. R. Herbert had the mis-
fortune to break a bone in
her ankle.
The monthly meeting of the
Ladies' Aid was held at the
home of Mrs. and Mrs. Gordon
Erown on Thursday afternoon
with the president, Mrs. O.
Tranmer in charge and assist-
ed in the devotional by Miss
A. Fockler. The roll call was
answered by a verse contain-
ing the word "trust". The pro-
gramme under the direction
of Mrs. E. Baker and Mrs. W.
Vaughan, included responsive
Bible reading, singing of the
hymn "Stand Up For Jesus",
and its origin given by Mrs. M.
Barnes, solo by Mrs. G.V.
Brown. Mrs. Howard Mills
gave a talk on "Peter". The
meeting closed with the benedi-
ction. Lunch was served by
the hostesses. The April meet-
ing will be held at the home
of Mrs. W.A. Fockler.
Mr. E. Reaman of Broug-
ham and Miss Dorothy Wagg
were at Whitby and Simcoe
last Sunday.

Auction Sale

**HOLSTEIN and GUERNSEY
CATTLE**

Jno. Deere Tractor & Combine
Full Line of Power Imple-
ments, Hay, Straw, Furniture
The undersigned has received
instructions to sell by public
auction at
Lot 3, Con. 6, Pickering Twp.
at Kinsale, on no.7, Hgy.,

SAT., MAR. 21

The following property be-
longing to

MORLEY SLEEMAN

Cattle
Holstein Cow, fresh
Holstein Cow, fresh or spring-
ing
Holstein Cow, fresh or spring-
ing
Holstein Cow, fresh or spring-
ing
Holstein Heifer full flow, bred
Feb.
Holstein Heifer, full flow
Holstein Heifer, bred June 29
Holstein Heifer, bred Nov. 30
Holstein Cow, bred Aug. 5
Holstein Heifer, bred Dec. 14
Holstein Heifer, 10 mos. old
Holstein Heifer, 9 mos. old
Holstein Heifer Calf
Red Bull Calf
Holstein Bull, 15 mos. old
Guernsey Cow, fresh, full flow
Guernsey Cow, bred Aug. 13th
Guernsey Heifer milking bred
Sept. 6
Guernsey Heifer, bred Dec. 31
Guernsey Heifer, 2 years old
Guernsey Heifer, 10 mos. old
Guernsey Heifer, 10 mos. old
Most animals are artificially
bred.

Implements
Tractor, John Deere, model B
Combine, motor driven John
Deere, 6
Tiller, 4 ft., Massey-Harris
Double Disc, John Deere 8 ft.
Cockshutt Fertilizer Drill, 13
disc
Harrows, 4-section
IHC Hay Loader
Side Delivery Rake, John
Deere
John Deere Mower, 5 ft. cut
Manure Spreader, Cockshutt
Manure Loader
Rubber Tired Wagon, 600x16
tires and rack
Saw Mandrel and Saw
Drive Belt, 50 ft.
Stone Boat Hay Fork, new
Sling Chain and Ropes
Gem Scan Elec. Milk Cooler
DeLaval Magnetic 2-unit Milk-
er with 9 stall cocks
Stewart Electric Clippers
2 Electric Fence Units
150 Feet Snow Fence
Single Plow Bag Truck
Separator, Massey-Harris
About 135 feet Hay Fork Rope
Set Harness, Collars, Neck-
yokes, Whistle trees
Water Fountains
About 300 Bales of Hay
About 300 Bales of Straw
Hydraulic Cylinder with hose
Chick Feeding Trough 50 cap.
All implements are 1 to 4
years old.

Furniture
Dinette Suite, natural and red
trim
Wardrobe, hardwood in wal-
nut finish
Chesterfield and 2 Arm Chairs
Newcombe Piano, Queen Ann
3 Dressers Bed & Springs
Pull-Out Couch and Mattress
Studio Couch, 3 pieces, chrom-
ium legs
 Windsor Table 3 Rugs 9x10
4 Rocking Chairs
6 Hardwood Chairs, leather
seats
2 Cook Stoves, Findlay Condor
and Gurney
Terms: Cash No Reserve
Farm Sold
Sale at 12 Noon
The W. A. will serve lunch
M. Mowbray, Clerk
A. S. FARMER, auctioneer
Phone Stouff. 67312

Farmer Interests Same as in Britain

By George Abell of Stouffville
The British farmer may
dress a little different and act
a little different than the man
on a York County hundred but
the things they talk about are
just about the same.
Here they complain just like
you fellows do about the high
prices of what they have to
buy and the low prices of what
they have to sell. And despite
all the concessions that have
been made over here to keep
farmers and farming in a
healthy state the general im-
pression gained by listening to
rural conversation is that a lot
of farmers are far from satis-
fied with government policy
towards agriculture.
They probably have a very
good reason to feel this way
for the present government
swept into power largely on
the promise to reduce the cost
of living by lowering food
prices.
The man on the land here
can remember the years be-
tween the wars when British
agriculture was in a terrible
state. The whole world was
fighting for the British mar-
ket and food was laid down
here from distant countries at
far less than the cost of pro-
duction at home. It was no
wonder that the country was
in a grass economy basis.
Whole counties, as big as
rich, and as flat as York county
didn't have one acre in a
hundred plowed each year.
But now the picture is
changed around. Farmers have
been given every incentive to
produce, such as guaranteed
prices for everything they can
grow, big subsidies on feed
stuffs, government backed
loans for farm improvement
purposes, etc., and they have
certainly made good use of
these facilities to pour out

more food than ever before in
history.
But in return for this help
the government demands al-
most complete control of ev-
erything that is done by the
farmers.
Members of the Agricultur-
al Committee for any district
have the right to walk in at
any time and look around.
They can inspect books and
records, stock, buildings and
crops. If anything is not the
way they think it should be
the farm can be put under
supervision and that is what
makes old men out of young
farmers in a hurry on this side
of the water.
A supervision order means
the snoopers are on your place
in full force and often ends up
that in a year or so the own-
ers or tenant of the farm so
supervised is evicted and his
chances of ever farming in
this country again are practi-
cally nil.
Then the Agricultural Exec-
utive Committee takes over
the operation of the place so
that it can be handled right
and more food produced. I see
that on their hundreds of
farms they work now, there
was a loss of only a few hun-
dred thousand pounds last
year. That's about average for
book farmers I think.
It's a little tough on a man
who owns and works a farm
that his family has owned and
worked for hundreds of years
to be put off the place com-
pletely. For a change a farmer
had the last laugh not long
ago in one of these cases.
This man, Hugh Bolton, for-
merly farmed a hundred acres
in Devon, in the West Country
and was so good he was class-
ed as an 'A' farmer by the local
Agricultural Authority. Two
years ago he went to another

county and rented a ninety-
acre place which, unknown to
him was under supervision due
to something the previous ten-
ant had done that displeased
the authorities.
The result was that after
two years Bolton was served
with a notice to quit his ten-
ancy in thirty days as the
Committee in their great wis-
dom had decided he was not
conducting things quite effi-
ciently enough.
But this man Bolton was
made of pretty tough stuff and
he told them just what they
could do with their eviction or-
der. Such a thing was unheard
of so all the majesty of the
law was marshalled to drum
him out.
But when Bolton's lawyer
pointed out that the tenancy
was in the joint name of Bol-
ton and his wife the govern-
ment forces beat a hasty re-
treat for as their chief barrister
said, "If we enforce this
order there is nothing to pre-
vent the wife operating the
farm and retaining her hus-
band as manager." Seems sort
of silly doesn't it, but how
would you like to know that
the next car that came up your
lane could bring an eviction
order because that ten acres
of mixed grain south of the
bush was full of sow thistle.
Not a very pleasant prospect,
is it? But as the farmers over
here found out, if you get
help from the government, you
also get a long nose over your
shoulder prying into every-
thing.
I'll have to end this thing
or you'll think it's a book.
So-long for now.

If something isn't wrong, it
isn't right, according to a
pessimist. Staying young is a mighty
good habit — and with women,
an old one, too.

FAMILY STYLE ENTERTAINMENT

ROXY MARKHAM

Mon. - Tue. — Mar. 23-24
SHE'S A HE & HE'S
A HOWL!
Ray
Bolger
in
Warner Bros.
Riotous Comedy
"WHERE'S
CHARLEY?"
(In Technicolor)
—plus—
Added Short & Cartoon

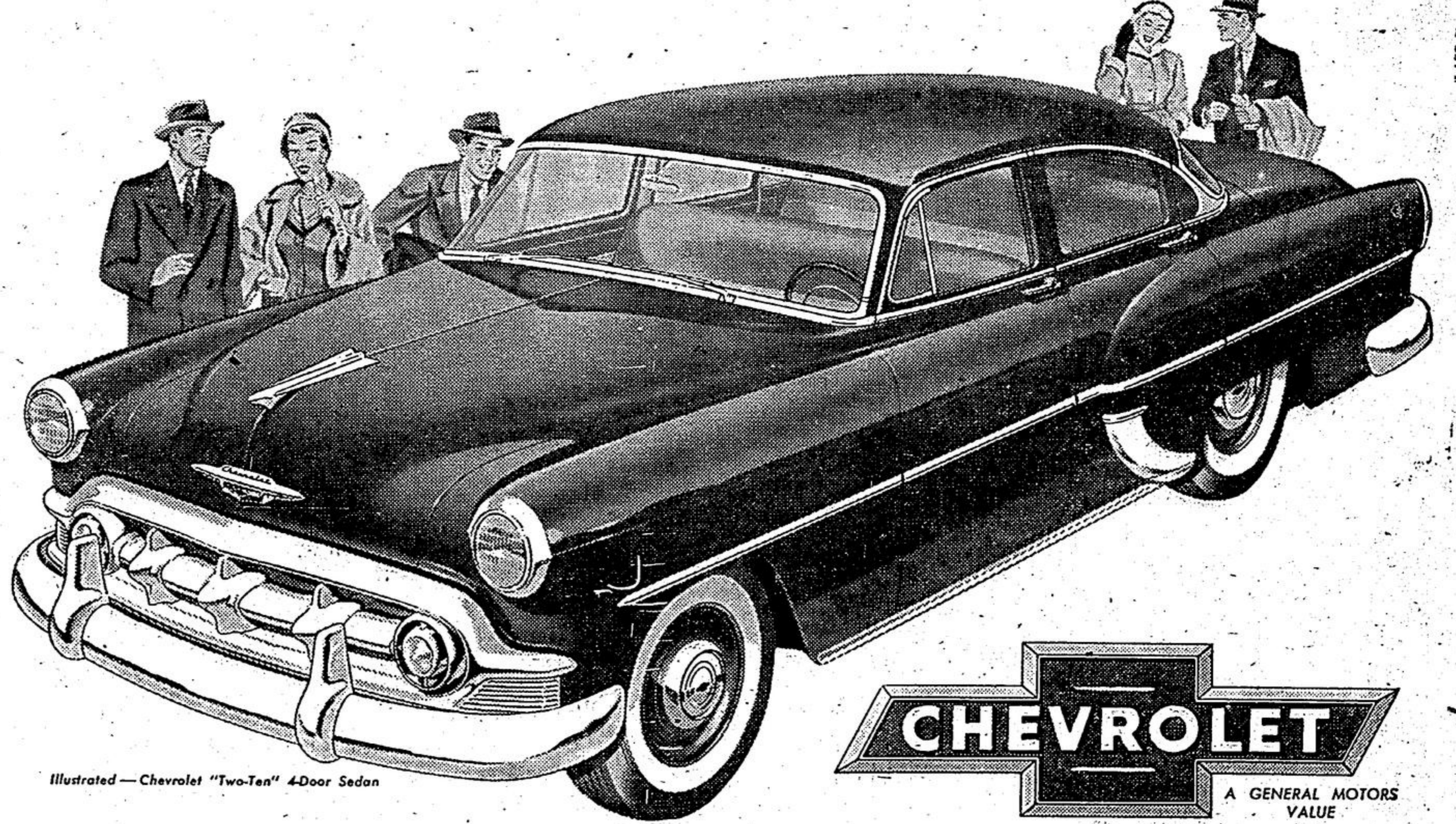
Fri. - Sat. — Mar. 20-21
The Australian Story!
THE CRY OF
MIGHTY ADVENTURE
"KANGAROO"
(In Technicolor)
starring
Maureen O'Hara
Peter Lawford
—plus—
NEWS, SHORTS &
CARTOON

1 SHOWS
NIGHTLY
7 & 9 p.m.
SAT. NIGHT
7 & 9 p.m.
MATINEE
2 p.m.

WEDNESDAY - THURSDAY — MAR. 25 - 26
IT'S A RIOT!!!
"WE'RE NOT MARRIED"
with MARILYN MONROE, FRED ALLEN,
DAVID WAYNE & EVE ARDEN
—plus—
"HOLIDAY FOR SINNERS"
KEXAN WYNN & JANICE RULE

MOVIES at their BEST!

ENTIRELY NEW Through and Through



—WITH MORE GREAT IMPROVEMENTS THAN ANY OTHER LOW-PRICED CAR!

Entirely New in Appearance with . . . New Fashion-First Bodies by Fisher. Here are more new models (16 of them!) . . . more beautiful and more comfortable bodies (take a look and a ride!) . . . and more color-choices (22 dazzling single-tone and two-tone combinations!) . . . than ever before in Chevrolet's history! And, in addition, Chevrolet's entirely new Fashion-First Bodies by Fisher bring you even richer and roomier color-matched interiors and ever sturdier Unisteel construction, for your greater safety-protection!

Entirely New Durability. New, stronger, more rigid construction imparts even greater durability and dependability to a car long famous for these qualities.

Entirely New in Performance with . . . New 115-h.p. "Blue-Flame" Valve-in-Head engine.* Chevrolet offers this powerful, gas-saving high-compression engine in all Powerglide models, together with the Economizer rear axle; and a new 108-h.p. "Thrifty-King" Valve-in-Head engine in all standard gearshift models.

New Power — New Acceleration — New Passing Ability. You'll find that the new Chevrolets, with either of these two great new engines, bring you more power, increased acceleration and greater passing ability, as well as sensational new economy.

New, Even Finer Powerglide Automatic Transmission*. Chevrolet's famed Powerglide Automatic Transmission, coupled with the new 115-h.p. engine and Economizer rear axle, gives even finer, fleetier no-shift driving at lowest cost.

New Extra-Easy Power Steering. Greatest advance in driver comfort since the introduction of automatic transmission. Gives finger-tip steering-ease and parking-ease . . . reduces driver fatigue. (Optional on all Powerglide-equipped models at extra cost.)

Entirely New in Convenience with . . . New Center-Fold Front Seat Backs (in 2-door models) for easier entrance and exit; New Master-Key Control with combination starting and ignition key switch;

New Automatic Choke on all models; and new larger rear-deck opening for easier loading and unloading.

Entirely New in Comfort with . . . New Curved One-Piece Windshield. New Crank-type Regulators for Ventipanes. New Foot-Form Clutch and Brake Pedals. And the softer, smoother Knee-Action Ride.

Entirely New in Safety with . . . New Finger-Fit Steering Wheel. Improved Velvet-Pressure Jumbo-Drum Brakes. Shade-Lite Tinted Glass (optional at extra cost). And Safety Glass in windshield and all windows of sedans and coupes.

Entirely New in Economy, too . . . Yes, all new Chevrolets for 1953 bring you more miles per gallon of gas — more over-all economy of operation — and, in addition, they're the lowest-priced line in their field! Come in — see and drive this great new car at your earliest convenience — and you'll know it's the car for you.

*Combination of Powerglide automatic transmission and 115-h.p. "Blue-Flame" engine optional on "Two-Ten" and Bel Air models at extra cost. (Continuation of standard equipment and trim illustrated is dependent on availability of material.)

CHAS. COOPER Ontario

Claremont

MORE PEOPLE BUY CHEVROLETS THAN ANY OTHER CAR!

C-8318