

# Newmarket to Gain \$48,000 In Assessment -- Annexation Whitchurch Tp. Property

"Taking a long term view, the annexation of this property adjacent to Newmarket may be for the best in the long run," stated Reeve Ed. Logan when the question of annexation of the Crossland Plan came up for a decision at the regular meeting of Whitchurch Council on Saturday afternoon.

The council passed a resolution not to oppose the amalgamation of 273½ acres of property on the boundary line with Newmarket. The section to be taken into the town stretches from the south boundary of lot 93, con. 1, to the north boundary of lot 95, con. 1, or Davis Dr., and from the west boundary of the town of Newmarket west to No. 11 Highway.

This land carries a total assessment of \$48,150 in the Township of Whitchurch, made up of \$15,000 on land, \$31,550 on buildings and \$10,000 business assessment. The largest parcel is 97½ acres belonging to the Crossland Plan and carrying an assessment of \$4,500.

Newmarket made application to Whitchurch some time ago concerning the annexation of this territory. Whitchurch officials sug-

gested a counter proposal to straighten the boundary line between the two municipalities. However, this was later viewed as a costly surveying job.

An estimate of the amount of assessment lost to Whitchurch through the counter proposal was \$30,000.

However, it was pointed out that the township will, in the not too distant future, face a school problem in this area, and possibly a water utility problem. The section to be annexed is developing rapidly and a new school will almost certainly be demanded shortly if the number of children continues to increase.

There is the possibility that water may be piped from the Town of Newmarket to the County Home at Yonge St., and if this development should materialize, sub-division residents in the area will no doubt wish to tap onto this water line which would all bring further expenditure to Whitchurch.

When the amalgamation proceeds, property owners in the area affected will be duly notified and a date set for a hearing of these ratepayers, at which time objections to the proposal may be heard.

## New Status for Ajax in Force, Will Assess Soon

By order of the Ontario Municipal Board, issued this week, Central Mortgage and Housing Corporation is now in a position to revert to the status of chief landowner at Ajax, while the Housing Project and Industrial area has been constituted as an Improvement District with the municipal status of a township. It will be administered by a Board of three trustees, to be appointed immediately by the Lieutenant Governor-in-Council. One member of the board will take a seat as a member of the Ontario County Council.

"In about two weeks we will begin an assessment of the entire property," said County Assessor Gordon McLean. "This will be carried out in the usual way with the assistance of six men from the provincial assessment department." Next step, according to Central Mortgage's wish to "get out of Ajax" will be to offer properties for sale.

This week's order has been expected ever since last July 1. Various minor difficulties played some part in delaying it. Approximately 3,000 acres of land and 800 houses are involved as well as the rapidly-expanding industrial buildings.

## ALTONA

Mr. and Mrs. D. Mansbridge attended a shower in the city one evening recently.

We were sorry to hear that Harold Lewis had the misfortune to step on a nail which pierced his foot, making it very painful.

Mr. J. Morrison is convalescing at the home of his daughter, Mrs. Wm. Eckardt after being in hospital for a time. We hope he will soon be feeling better.

Mr. and Mrs. Earl McNair of Enniskillen called on their parents, Mr. and Mrs. Wm. McNair, on Saturday last.

Mr. and Mrs. Isaac Lehman were Sunday supper guests with Mr. and Mrs. John Pallister.

## Inspect 5,554 Pupils During September York Health Unit Says

All of the elementary school classrooms in the municipalities which are members of the York County Health Unit including Stouffville were inspected recently by public health nurses of the unit. In the report of the unit, a total of 5,554 pupils enrolled in 170 classrooms were inspected.

The report said the unit began school health service, periodic inspections of dairies, milk producers, and restaurants, and other phases of its program as well as progressing further with its organization. Shortage of public health nurses was a handicap, the report said, and it was hoped that some addition to the public nursing staff will be available soon.

The report also records an enthusiastic reception of the unit from community leaders, officials and representatives of the member units. "The people at large appear genuinely interested in the health unit," the report states.

No serious outbreaks of any diseases have occurred within the unit although there were some outbreaks of mumps and wide-spread influenza-like illness of short duration. Most of the activities of the nurses were concerned with school health services. A start was made on an annual sanitary inspection of school premises. Fifty-one pupils were excluded from school because of pediculosis, 30 acute communicable disease, one and skin infections, 20.

A total of 269 visits were made to homes by the nurses.

A department of health sanitary engineer made several inspections of municipal water plants, sewage disposal plants, locker plants and dairies during the month. Much time was devoted to answering complaints about nuisances, usually in regard to defective septic tanks and tile beds. Tests of samples of milk taken from dairies

within the health unit show the general need for improvement in the sanitary quality of the milk being sold to the public, the report says. With the coming of colder weather, there is usually some improvement in milk quality, but this does not relieve milk handlers of the need for improving their general sanitation methods, the report adds.

Inspections of restaurants are continuing and a complete list of all eating establishments is being compiled. Insofar as eating establishments constitute a type of public utility, the report says, used not only by the citizens of the town or village where a restaurant is located, but also by the people from the surrounding rural areas as well as transients and tourists who contribute in some cases to a large extent to local prosperity, it is essential that eating establishments maintain a high standard for the general health and economy of the community.

The report notes that staff members made eight addresses to various groups within the unit during the month, and that much of the time of the staff is taken up with interpreting the services of the unit to the public. Members of the staff are willing to speak at gatherings, where convenient, to explain the work of the unit.

Plans are being made for the immunization of pre-school and school children, and for the education of food handlers as well as other specific phases of the health unit program during the winter.

A total of 106 general sanitation field visits were made, for a total of 292 during the first two months of the unit's operation; 37 food control field visits were made for a two-month total of 76; 43 samples and tests made on milk for a two-month total of 80; 26 water tests for a two month total of 96.

What is believed to be the world's largest deposit of ilmenite, the ore of titanium, is at Allard Lake in Quebec.

## LOSES LICENSE AFTER LOCAL DRIVING SPREE

William Richardson who was arrested in Stouffville last week following a wild driving spree down Main St., in which several cars were damaged, was assessed \$30 and costs on a charge of careless driving, and his license was cancelled for a month; he was also fined \$20 and costs for having liquor. Accused appeared before Magistrate Hollinrake in court at Newmarket.

## FRESH PEAS IN NOV.

Harvey Grove, 6th con. of Markham reports another seasonal phenomena. Fresh peas from the garden the first week in November is Harvey's boast. We picked a couple of baskets off the patch—the second patch on the same piece of ground.

## BIGGEST YET

Last Saturday being the 5th Community Sale at the new Stouffville Sales Arena was the biggest yet; buyers were there from Trenton, Brighton, Kitchener, Guelph, Hamilton, Vineland Station and many small points in between. The sale totalled over \$15,000. To give you some idea of the size, let us figure it this way. If this were an average sale, then in one year there would be three quarters of a million dollars worth of livestock pass through the sales ring; which would be a nice volume of business for any firm.

The sales arena was filled to capacity with over 100 head of cattle and hundreds of pigs, from suckers to hogs ready for market.

The sales ring, not the largest but one of the most modern, was filled to overflowing, with many out in the arena, getting the proceedings from the speaking system, installed in the sales ring to aid in the selling.

The sales ring is heated during the cold weather and the sale goes on under cover whether it is stormy or not.

It takes from 12 to 15 men to handle and keep account of the incoming and out-going stock. When the sale is over and the trucks start loading at the three loading shoots it takes close supervision as there are pigs and cattle going in all directions.

There are three men in the office and they can give you your money 5 minutes after the article is sold.

The arena is cleaned, sprayed, and disinfected after each sale for your protection. A sale is held every Saturday at one o'clock. It is a place where buyers and sellers meet. Be wise — come early if you want a seat.

## S.H.S. NEWS

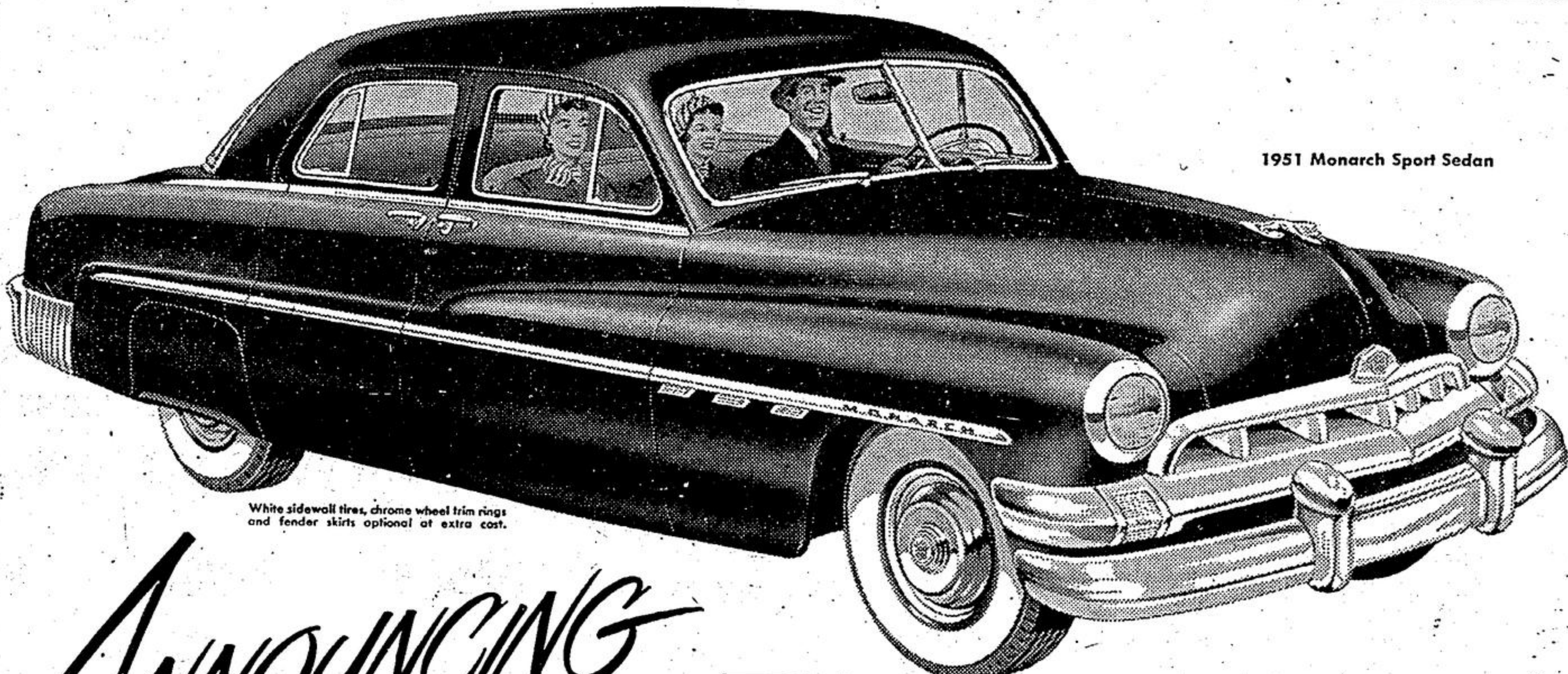
The student-body met in the assembly room on Friday, Nov. 10, to hold their first Literary meeting of this year. It was based on Remembrance Day.

The meeting opened with "O Canada," followed by the minutes. Doris Steckley and Louise Clark favoured us with a piano duet. Joan Chapin recited the poem "For the Fallen," by L. Binyon. Marie and Katherine Stover sang a lovely duet "O God Our Help in Ages Past." The school paper was

excellent at this meeting and we must commend all who contributed to make it such a success. Willy Moyer gave a trumpet solo "Abide With Me," accompanied by Pauline Barkey. Isobel Keffer gave an oral composition pertaining to Remembrance Day. Critic Helen Paisley and Mr. Sherwood gave their reports. The meeting closed with "God Save the King."

It was an extremely good meeting and we all hope there will be many more like it.

Canada's first industries were fishing and the fur trade.



White sidewall tires, chrome wheel trim rings and fender skirts optional at extra cost.

*ANNOUNCING*  
the new

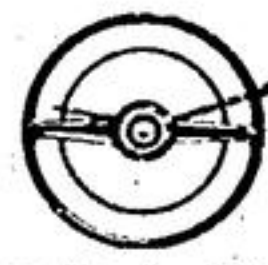
# 1951 Monarch

It's here! . . . to open your eyes . . . to win your heart! It's the beautiful new 1951 Monarch—a masterpiece by every measure.

A masterpiece of beauty . . . with new front-end distinction . . . and an entirely new, eye-catching treatment of "speedlined" rear quarters and new back-swept fenders. A masterpiece of quality . . . with new fabrics, appointments and trim . . . in richly comfortable interiors that invite you to "Ride Like a King"! A masterpiece of engineering . . . with an improved 112 Hp. Monarch V-type, 8-cylinder engine . . . and the ride advancements you expect of a truly modern car.

See it, and let the new Monarch tell its own story. Visit your Ford-Monarch dealer . . . and Ride Like a King!

*A Masterpiece by every measure*



New Steering Wheel is superbly styled.



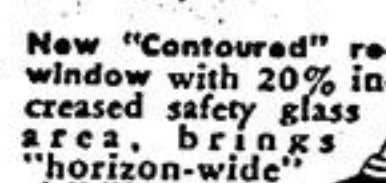
Smart new rear deck ornament sets off 1950's newest, smartest rear-end ensemble.



Protective rub rails, heavily chromed, add to the beautiful lines.



New Hub Caps bear the colorful Monarch crest.



New "Contoured" rear window with 20% increased safety glass area, brings "horizon-wide" visibility.

Many more advanced features, including: Finer Instrument Panel, Push-Button door handles, wide choice of colours and upholstery, extra comfort, handling ease and safety. Famous Monarch "Touch-O-Matic" Overdrive (optional at extra cost).



1951 Monarch 6-Passenger Coupe

See it!... DRIVE IT!... and



*Ride Like a King*

Radio listening you'll enjoy... "Ford Theatre" every Friday night.

A PRODUCT OF FORD OF CANADA

**EASTSIDE MOTORS, - East End, - Stouffville**

*Timely Travel Tips!*



Next time you feel the urge to go places, see your local bus agent. He can tell you all about fares, stop-over arrangements, time tables and other details that will help you to enjoy your trip. He is a member of your community and will be glad to serve you.

### ROUND TRIP

Chicago ..... \$ 24.85  
Los Angeles .... 91.40  
Winnipeg ..... 48.05  
Vancouver ..... 91.40  
(Subject to Change)

TICKETS AND INFORMATION  
**STOUFFVILLE MOTORS**  
PHONE 170