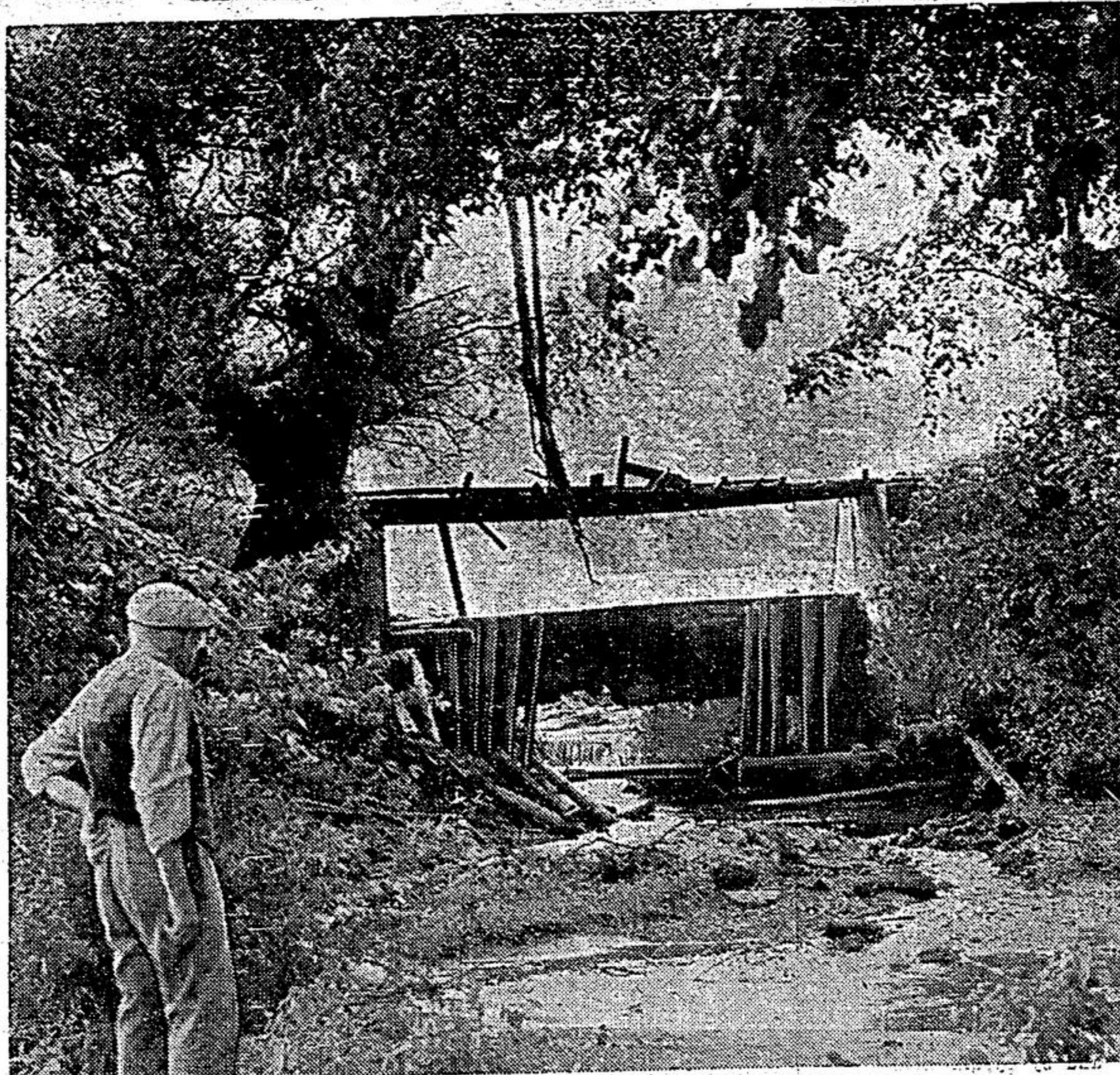


6th Line Octogenarian Still Active Miller



Low-hanging branches of trees along the quiet banks of the Rouge River frame the dam on Alex Bruce's farm, six miles north of Unionville. Until it broke down a month ago the dam supplied water-power to turn the wheel in 121-year-old Bruce mill.



Can you canoe?

If you can't canoe, you shouldn't, no matter how romantic the night. But there are plenty of other boats for your safe enjoyment of our lakes and rivers.

ROUND TRIP—BY BUS

Hunsville ..... \$9.15  
 Jackson's Pt. .... 4.75  
 Burks Falls ..... 10.40  
 Orillia ..... 5.90  
 (Subject to Change)



STOUFFVILLE MOTORS  
 PHONE 170

Kapuskasing — A wild duck in the Carey Lake area seems to have its own ideas as to what a chimney is for.

According to officers of the Department of Lands and Forests the bird has built her nest in one of the chimneys of a new building erected for the use of the Air Service Division. The bird, officers say, seems to be totally oblivious to

the danger an onslaught of cool weather might bring.

In the United States, petroleum was first produced commercially in 1859.

The Greek rebels, to defeat whom the United States has contributed nearly \$170,000,000 in aid, number about 25,000 soldiers.

# CHEVROLET TRUCKS

## ✓ Performance Leaders!

Chevrolet's great Valve-in-Head engines can do more work per gallon of gas than any other gasoline engine of the same displacement now in use. They're smooth, rugged and powerful — masters of the job!

## ✓ Payload Leaders!

Low operating and repair costs of Chevrolet trucks are an outgrowth of finest engineering and rugged Advance-Design construction. Chevrolet trucks let you deliver the goods with real reduction in cost per ton per mile.

## ✓ Popularity Leaders!

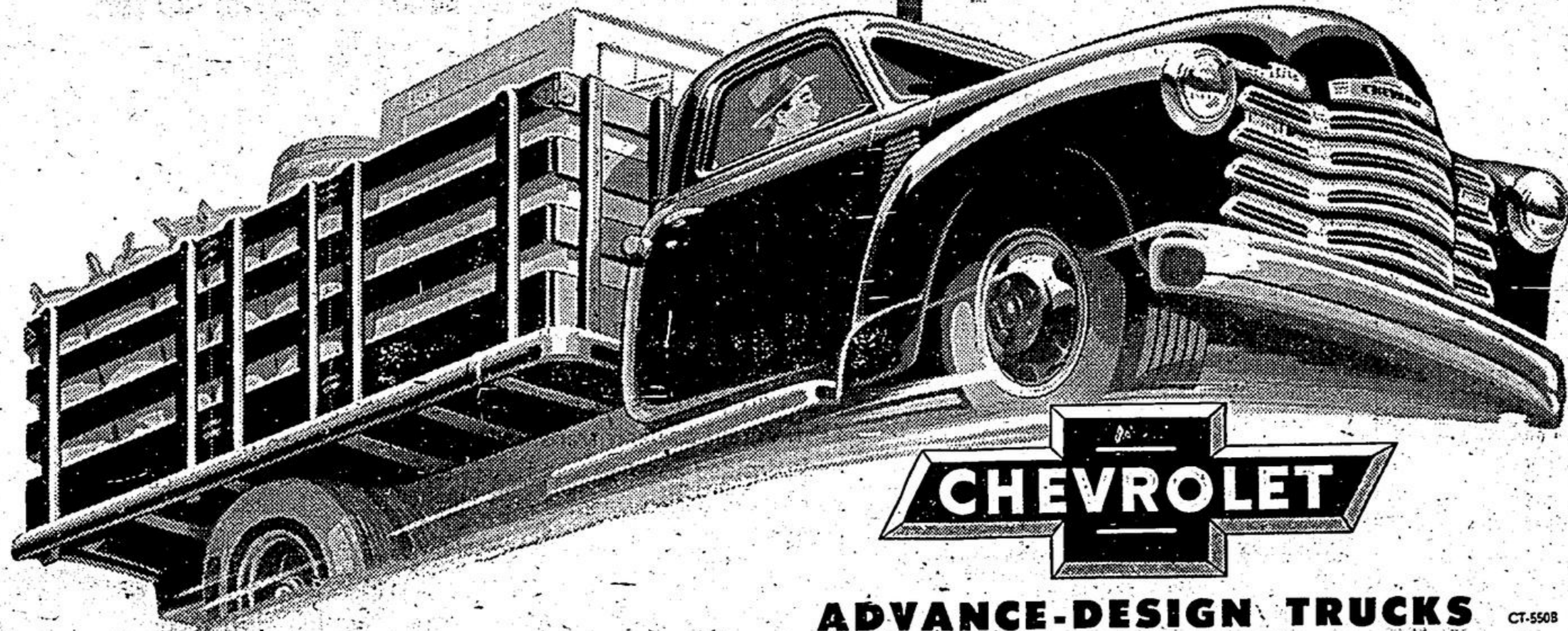
For the last full year, Chevrolet outsold all competition. That's evidence of owner satisfaction earned through the years — proof, yes proof beyond any question or doubt, that Chevrolet is the most-wanted truck.

## ✓ Price Leaders!

You're money ahead with these new Chevrolet trucks! Chevrolet's rock-bottom initial cost — outstandingly low cost of operation and maintenance — and high trade-in value, all add up to the lowest price for you.

You can expect great things of these new Chevrolet trucks. They're the most powerful trucks Chevrolet has ever built, yet they cost surprisingly little to operate. Three rugged, wonder-working Valve-in-Head engines — the Thriftmaster 92-h.p., Loadmaster 105-h.p. and the big new 110-h.p. Torquemaster — bring you performance that saves you time and money. New Power-Jet carburetion provides smooth, quick acceleration, and the 4-Speed Synchro-Mesh transmission is standard equipment from the 1-ton to the 3-ton (optional in 1/2 and 3/4-ton) which means faster shifting and greater safety on the grades. To you, this means wonderful new performance . . . less time on the road . . . lower cost per ton-mile. So do yourself a favor. Visit our showroom today. Chevrolet trucks—and only Chevrolet trucks—provide what you want!

A GENERAL MOTORS VALUE



ADVANCE-DESIGN TRUCKS CT-5508

Claremont

CHAS. COOPER

Ontario

## FIGHT Poultry Golds with HTH-15

The only "fleeing powder", dry Chlorine for dusting poultry against breathing disorders. Just dust it over birds' heads. HTH-15 is so finely divided that it settles slowly - prolonging treatment.

For Drinking Water

A little HTH-15 in drinking water makes it safe and helps prevent stims.

at your nearest dealer

## Wife of Prime Minister Will Officiate at Opening of C.N.E.

For the first time in CNE records, the wife of the country's Prime Minister will officiate at opening day ceremonies. Madame Louis St. Laurent will accompany the Prime Minister who is to officially open the Exhibition, she to take part in first day activities of the women's division.

Women's director, Mrs. Kate Aitken, has announced that Madame St. Laurent will be guest of honor at the opening day women's luncheon, open an exhibition of French-Canadian handicrafts, turn the key in the door of the CNE's model Halliday Home and then receive the first ticket on this give-away home to be duplicated anywhere in Canada for the winner of a lucky draw.

Also during her busy day, believed her first to the CNE, Madame St. Laurent will meet the artists, designers and craftsmen responsible for the building of the 1950 Women's World and its many exhibits including some of those on the ground floor of the Coliseum which this year for the first time comes under the Women's Division.

As is the tradition at all opening day women's luncheons the wife of the Prime Minister, as the first lady of the day, will be presented with a Maple Leaf pin of brilliants similar to those given to Princess Alice, Countess Mountbatten, Lady Alexander, Mrs. Ray Lawson, wife of Ontario's Lieutenant-Governor and others.

Two other married Canadian Prime Ministers — Sir Wilfred Laurier in 1901 and Sir Robert Borden in 1913—have officiated at CNE opening day ceremonies but no record has been kept as to whether they were accompanied by their wives.

## Headstone Fight Is Won by Father

Something new in bylaws was last week instituted by the Waterloo Park Board, and a case arose concerning a man's insistence on placing a headstone where he wanted to in the cemetery.

A draft bylaw will be presented to the board at its next meeting but, on motion of Mayor Bauman, the man responsible for the move will be permitted to place the monument where he wishes.

The case arose when the cemetery committee learned the man wished to place the stone directly over the grave of his son in a three-grave plot he owns. The Park Board wanted to have all headstones in line.

The board informed the man that it was policy to have the monuments thus placed, but he insisted on placing it where he wanted to and checked with his solicitor on the matter.

Perusal of the records revealed that the Park Board had never had a bylaw passed or any regulation in effect which would make its expressed policy effective.

Board members decided they were faced with the alternative of letting the man do as he wished or bearing the cost of refacing the stone which he has already had cut.

If the board insisted on him conforming with its desires, then it was under a moral obligation to bear this cost. The stone, as cut, would be unsuitable in the event the board insisted it must be in line with others.

Mayor Bauman said he could not support the idea of bearing the cost, about \$48, and members agreed that the one stone would not be sufficiently out of line with others to matter much.

At one point in the discussion, members were prepared to tumble into cars and go down to the cemetery to see the situation for themselves.

