



If you're starting chicks, start them fast! Feed them Purina Chick Startena Checker-Etts.



Fast gains mean profit! Feed for speed — mix Sow & Pig Chow with your chop.



Aim for BIG Eggs EARLY!

Big eggs are going to mean real money this Summer and Fall — but that won't mean a thing to you if you're not getting big eggs! And the only way we know to get big eggs in time to do your pocket the most good is to grow big, strong, sturdy pullets with the body development to get up to full production of big eggs early.

We're not talking about "pushing pullets into production". The aim of the Purina growing plan is to

get pullets to the right stage of development so that when they start to lay they'll be ready to lay... lay heavily and come up fast in egg size. That's not "pushing" them — it's developing them, with their development balanced against their sexual maturity. Then they'll use your laying ration for laying!

Which Purina growing ration to choose depends upon your grain supply. Come in and talk it over!

GROWENA • GROWING CHOW • CHOWDER
(complete) (with grain) (concentrate)

There's more profit, and pleasure, in a farm that's free from flies. This new formula Purina Fly Spray will settle the fly problem for you. It kills all flies, including those resistant to DDT. It kills all Summer — you need to spray your buildings only once, unless the Summer turns out extremely hot and long. Use the same spray on both buildings and animals — only one product to bother about. See us about your supply, early.

New Formula Purina FLY SPRAY

Want to save time? Sure! Want to save work? Sure! Want to save money? Sure! Want to raise good calves... BETTER calves? Sure! Hundreds of good dairymen succeed in doing all those things by following the Purina "dry-feeding" plan... comparatively little milk the first month, none after that. Think of all the time that saves!

Save Time with Purina CALF STARTENA

Try The New B-A Gasoline
B-A 88 or B-A 98
Order today for a trial tank full.
Phone 45w1 - 64508

STIVER BROS.

STOUFFVILLE, ONT.

Mrs. R. Chapin Speaks At W.M.S. Meeting

The June meeting of the Women's Missionary Society of the United Church was held in the church on Thursday with Mrs. K. Campbell, president, presiding.

The meeting opened with a hymn "Jesus Calls Us." The business session included an invitation to visit with Claremont Auxiliary, announcement of Rural President Gathering June 6, also cancellation of meeting during July and August although the president urged members to contribute usual offerings for these meetings and bring it to the first fall meeting. Mrs. D. Davis read an interesting item on "Stewardship" illustrating the importance of giving and helping others and how keeping our money entirely to ourselves and for our own needs may eventually destroy us.

Group leaders for this meeting were Mrs. G. Gunn and Mrs. H. Sanders. Mrs. S. Ball, taking as her theme "The Great Teacher" gave several examples of Christ taking time to talk to women which gives W.M.S. women an incentive to be interested workers for Him.

Mrs. Chapin, in her usual pleasing manner, gave an interesting and unusual message on "Temperance." She told of many forms of intemperance, one being our urge to overwork ourselves to the point of being hard to live with, another was starvation and quoted the President of Pakistan as saying, "there could be no peace in the world until the western world helped the starving people of Asia." She said the worst form of intemperance was our intolerance of alcohol. She felt we should try and understand why teenagers drink. Young people aren't bad, only misled and perhaps without realizing it they were really searching for God. She said accidents weren't caused by men who were drunk, but by the ones who had only taken one or two glasses, and their usual quick acting brain was slowed.

Roberta Bone favored the meeting with a solo "God Hath Not Promised." The president thanked the speaker and hymn "Hark the

Devon, Pa., where they were successful winners. In former years Mr. Brown had charge of Daviburn stables owned by Mr. and Mrs. G. A. M. Davison of Unionville.

MICHAEL HOPKINS ENTERPRISES

presents

DON MESSER and HIS ISLANDERS

in a

GIGANTIC SQUARE DANCE

AT THE OSHAWA ARENA

SATURDAY, JUNE 17TH

Tickets on Sale at

— Stouffville Radio Electric —

\$1.00 PER PERSON

N. Yonge To Be Four Lanes to Richmond Hill

Work is under way to convert No. 11 highway from Steele's Corners to Richmond Hill into a four-lane artery. Old radial car tracks on the

east side are to be replaced by pavement, making the width of the highway 44 feet.

Two years ago a strip of pavement was put down on the west side making a third traffic lane.

Board of control approved sale of a strip of land almost a mile long fronting on the Langstaff jail farm to the department of highways. The strip is seven feet wide and will form part of the new lane.

Voice of Jesus Calling" was sung and the meeting closed with the Mizpah benediction.

G. Holden, press sec'y.

Young men are people who ask a girl's father for her hand so they can put it in dishwasher.

Markham District Veterans' Association

DANCE

RAINBOW GARDENS, MARKHAM

8.00 p.m. to 1.00 a.m.

Friday, June 9th

Music by "Pine Grove Serenaders"

BINGO — GAMES — FUN FOR ALL

Admission Free Dancing 50c

— Proceeds M.D.V.A. Building Fund —

RADIO WILL BE RAFFLED
— Proceeds Manitoba Flood Relief —

UNIONVILLE

Miss Nancy Rae, B.A., daughter of Mr. and Mrs. R. B. Rae of Unionville, was the winner of the Sir Joseph Flavelle prize for general proficiency in the second year student class of nurses in the Toronto General Hospital. The award was presented at the graduation ceremonies held in Convocation Hall on June 1st. Miss Rae who represented her class in the Toronto Student Nurses' Association during 1949 to 1950, has been chosen president of the Student Government Association for 1950 to 1951 by the student body.

Mr. and Mrs. Frank Brown of Mount Tremblant, Que. and former residents of Unionville, visited at the home of Mrs. G. A. M. Davison during the weekend. Mr. Brown has charge of Mr. Jas. Franchese's large stable of show horses, eight of which have just returned from the large open air show at

Devon, Pa., where they were successful winners. In former years Mr. Brown had charge of Daviburn stables owned by Mr. and Mrs. G. A. M. Davison of Unionville.

Announcing

EASTSIDE MOTORS

STOUFFVILLE

LLOYD A. BROWN, Sales Manager

ARCHIE J. CAMPBELL, Proprietor

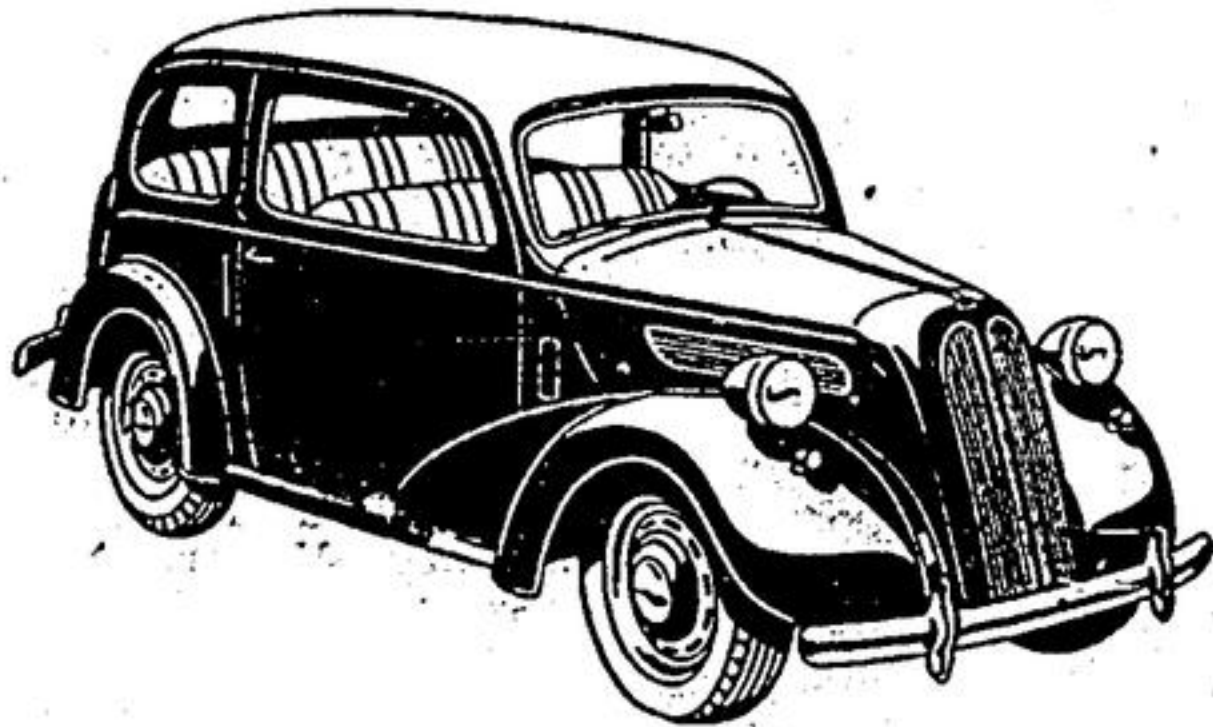
BILL GARRETT, Tractor Sales

Authorized Ford Dealers

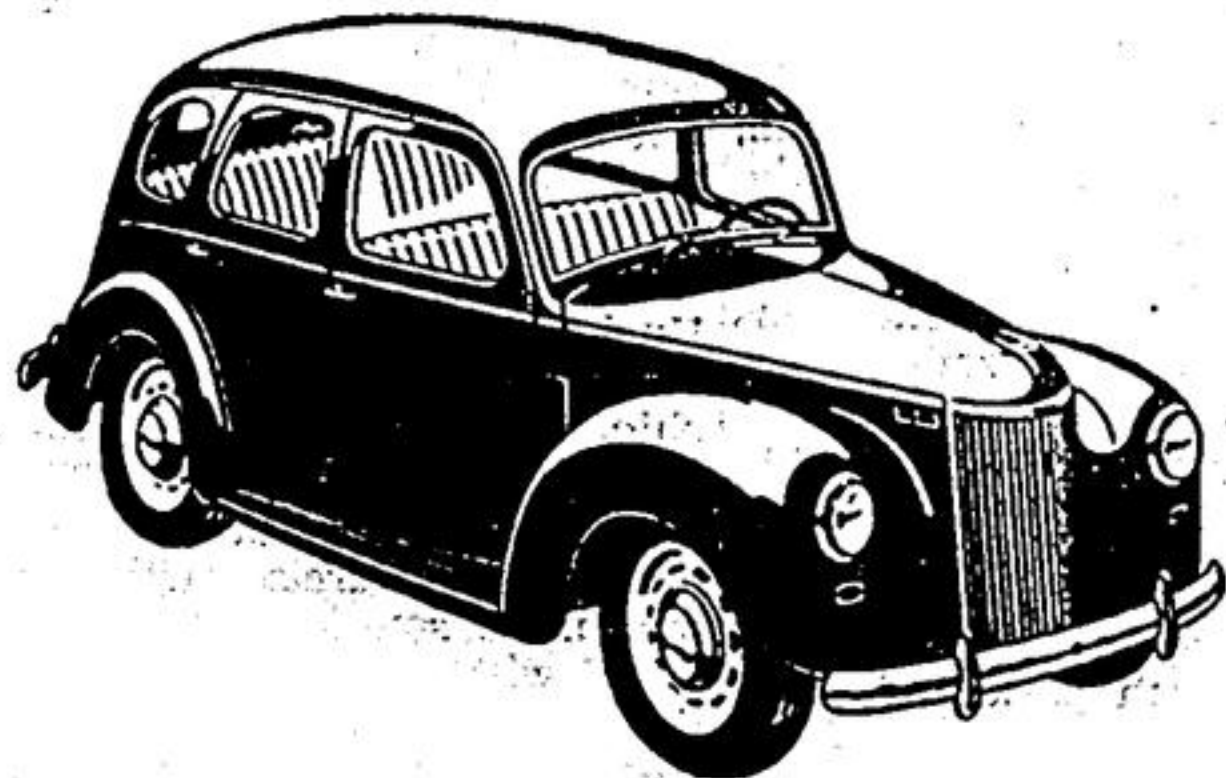
ANGLIA and PREFECT CARS

FORD and MONARCH CARS

There's so much in the Anglia that will recommend it to you — two-door safety for the family with children — wide doors with front seats that fold out of the way for easy access to the rear seat — durable art-leather upholstery — luggage space in the over-size trunk and generous package shelf under the dash. It's at home in every kind of company — and above all, its outstanding economy of operation make it a joy to own.



You'll find the four-door Perfect a perfect car for all occasions. Interior and exterior appointments will please the most discriminating with genuine leather upholstery for that extra dash of smartness and luxury. The trunk is oversized for luggage on long trips — there's room for small parcels in a compartment below the dash and on the shelf under the rear window. It's a car you'll be happy to own — one that is noted for its styling and economy.



Corner of Main and Tenth Streets

Here's a Ford Model that brings you dozens of outstanding features you've been looking for. Take the spacious new interior with luxurious new upholstery in clean sparkling colours. Take the "Picture Window" Visibility with over 19 square feet of glass area. Take the "Deep Deck" Luggage Locker with its 22.9 cubic feet of useable space, opened by a trigger-type latch. Take the colorful instrument panel styled for greater convenience and beauty. But, better still, take a ride in this '50 Ford and you won't want to take anything less than a Ford for your money.



Here is the distinguished Monarch in the smart four-door Sport Sedan model. Its luxury styling enables you to custom choose your Monarch from a wide range of 12 sparkling body colours and combinations. Rich, durable upholstery comes in two colour schemes of Broadcloth and one in Bedford Cord. And for utmost comfort, there's "Select-O-Seat" springing in the front seat, engineered and adjusted to the average person's preferences. At slight extra cost, additional coil springs can be inserted, if required, to suit any owner's personal requirements.



Phone 64w1