

**FIRE DESTROYS GILMOUR LODGE**

The Aurora fire brigade was called to the farm of Major Harrison Gilmour, second concession, Whitechurch, last week, where a blaze had broken out in the main lodge close to midnight. The high wind, muddy roads and the headway gained by the flames prevented the brigade saving the log building. While the cause is not determined exactly, it is believed to have started from the oil furnace. The lodge was unoccupied, the Gilmour family being in residence in Toronto and spending weekends and the summer there. Many valuable trophies and works of art were lost. The loss is estimated at over \$15,000.

Edmund Wagg, 74-year-old resident of Mount Albert died last week. Surviving are a wife and a son and daughter.



Demanding reduced prices for food, French women Communists, some with their children, parade in Paris in protest

against the cost of living. They marched to the statue of Joan of Arc, on which they placed a crown. In spite of the need to

keep people on the land, France called up 300,000 20-year-olds for the army.

**CANADIAN LAND AVERAGES \$35 AN ACRE**

Average value of occupied farm land in Canada for 1947 was \$35 an acre, an increase of nine per cent over the average value indicated in 1946 and 40 per cent more than in 1939, the Bureau of Statistics reported. Reflecting the relative increases in farm produce prices, the average includes both cultivated and unimproved land. The bureau's index of farm prices of agricultural products for 1947 was 95.5 per cent above the 1935-39 level, while for the same year the index of prices of commodities and services used by farmers advanced 57.4 per cent from the 1935-39 base-period level.

**Vandorf President Heads York County Junior Farmers**

"Balanced Programmes" proved the theme for the York County Junior Farmers' Annual Meeting held at Newmarket. The meeting was an all day affair and attended by an enthusiastic group of 60 juniors, from the seven local clubs of the county. The programme was presided over by Bruce Snider of Maple, the county president and Stewart Watson of Agincourt, the Secretary Treasurer. A favourable financial statement was presented to the delegates and the remainder of the morning taken up with business, reports and nominations for the county executive after which all enjoyed a substantial lunch served by the St. Andrews' Women's Association.

Following lunch an address "Methods of Conducting Meetings" was very ably delivered to the group by Mr. N. C. Lindsay, Supervisor, Community Programmes, Department of Education.

Various projects of the locals and county were given thorough attention when the group divided into separate boys' and girls' sections. While the main discussion in the boys' group was centred on the guest speaker's remarks, the girls were concerned with reports from each club and club planning.

The elections were the last business to be conducted. The new county president is Bill Mitchell of Oak Ridges, popular director on the Vandorf executive. To the Vice Presidency was elected another Vandorf member, Mrs. Peggy Moynihan, girls' past president and Stuart Watson of Agincourt was returned to the office of Secretary Treasurer in recognition of his valuable contributions in that capacity last year.

**SAFER COOKER**

Pressure cooker which, makers say, will not open until pressure has fully reduced, features automatic adjusting pressure control which allows user to modify pressure by sliding special weight one way or another. Made of die cast aluminum and having capacity of 4 1/2 quarts, cooker has pressure lock.

**EGG CLEANER**

"Australian egg pulping and exporting company claims to have invented a machine that can clean and pasteurize 18,000 eggs an hour. Two operators feed eggs on to rubber rollers which carry them into bath (thermostatically controlled at 146 degrees Fahr.) and under series of scrubbing brushes. On leaving bath, eggs are sprayed with hot water, passed through drying chamber of forced cold air.

**Western Feed Grain Should Not be Used For Seed Purposes**

"The practice of using Western feed grain as seed is a step in the wrong direction and must be discouraged," says John M. MacLeod, Director of the Crops, Seeds and Weeds Branch, Ontario Department of Agriculture. While feed grain may have a good appearance, he points out, there are several other factors which must be considered from a seed standpoint. In the first place, there is no assurance as to the variety of grain, whether it is early or late maturing, resistant to rust or adapted to local conditions. In the second place, Western feed oats are usually a mixture of early and late varieties, and the crop grown from such grain would mature unevenly. Furthermore, the varieties may not be suitable to local conditions and the grain may have been frozen prior to harvest, resulting in low germination and poor yields.

There is also the possibility, says Mr. MacLeod, of introducing new weeds into the farm.

There is a plentiful supply of high quality, adaptable varieties of seed oats and barley in the Province. Information regarding available seed may be obtained from local seed dealers, Agricultural Representatives, or the Crops, Seeds and Weeds Branch, Parliament Buildings, Toronto. Considerable time, effort and expense are involved in the preparation of the seed bed, so it is not good business for farmers to gamble on using feed grain as seed. Their motto should be "Know what you sow."

**OUT TO PASTURE**

St. Thomas, April 3—"Old Maud," the local fire department's antiquated truck, will probably be put out to pasture since \$60 was the highest bid offered when the truck was put up for sale. Twenty-six years ago the truck cost \$9,000.

**WERE INSURANCE-MINDED**  
Over 15 million Canadians own approximately \$12 billions of life insurance and annuities—equal to \$950 per capita, or \$3,800 for a family of four.

Send The Tribune to absent friends.



**NOW**

**YOU CAN AFFORD A TRACTOR!**

**GIBSON TRACTORS \$624.00**

For Spring Delivery As there is a limited supply available, order early to avoid disappointment.

**TWO WHEEL TRACTORS from \$175.00 up**

Dealer **Fred J. Mason** Markham Phone 208 North End

**Stouffville Floral**  
— ROSES —  
Wedding Bouquets  
Funeral Designs  
Cut Flowers  
Milt. Smith Prop.

**Upholstering - Refinishing**  
**Repairing of Furniture**  
No extra charge for estimates, pick-up and delivery  
**R. C. BLEWETT, AGINCOURT**  
Grover 6993 — Agincourt 320W

**EGGS WANTED**  
BY REG. GRADING STATION  
Cases supplied and picked up at your door.  
For a reference ask your neighbors about our grade, price and prompt weekly returns.  
Write or phone  
**P. HUTTON,**  
Grover 8970 40 Kenworthy Ave. Toronto 13

**PETROLANE BOTTLED GAS**  
Cooks - Heats - Freezes  
Come and See our Modern Display of Gas Stoves, Space Heaters and Hot Water Heaters  
**Petrolane Corporation Ltd.**  
Distributors of Bottled Gas  
Yonge St. Thornhill Phone 170J

**CREAM**  
For Best Results Ship Your Cream to Stouffville Creamery.  
We pay two cents more per pound Butter-fat for Cream delivered to the Creamery.  
**COLD STORAGE LOCKERS**  
AND FAST FREEZING FACILITIES  
**STOUFFVILLE CREAMERY CO.**  
To have our truck call, Phone 18601.

**- Wanted Bones -**  
W. HARRIS & COMPANY, LIMITED  
200 Keating St., Toronto:  
Will pay Highest Prices for all Classes of  
**BONES**  
Write or Telephone Elgin 7114, Toronto.

**CAUGHT BIG FISH WITH HIS HANDS**

Thirty-Eight Inch Pike Nabbed by Clarence Kaster on Walkerton's Main Street During Recent Flood

An episode worthy of Robert Ripley's "Believe it or Not" column occurred in Walkerton during the disastrous spring flood of the past weekend.

For anyone to make the bold statement that a big pike had been caught in front of ex-Mayor Lobsinger's Canadian Tire Corporation Store, he would under ordinary circumstances be promptly discounted and it would result in the narrator being adjudged a likely candidate for the championship of the famous liar club. However, this really took place.

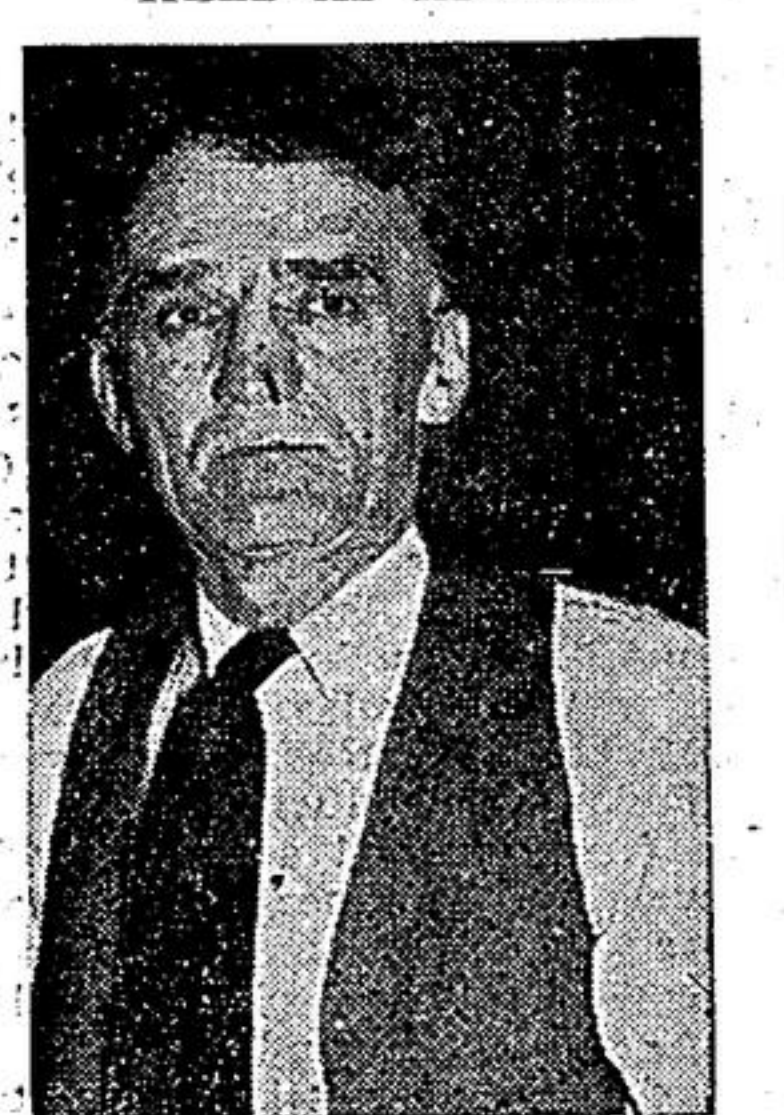
It appears that Clarence Kaster, who resides west of the town, was wading through the water in front of the store when he spotted a big fish in the water. Making a lunge to capture the finny prize the slippery fish evaded its would-be captor, but in its rush to get away plunged full speed into the brick wall with the result that it was slightly stunned. Kaster lost no time in taking advantage of the situation and nabbed the inert fish.

The prize was found to be a thirty-eight inch pike which tipped the scales at fifteen pounds which even under ordinary circumstances would be worthy of mention on Andy Clark's Neighbourly News program on Sunday morning.

At the exact spot where the large fin struck the west wall of the Canadian Tire Corporation Store, Mr. Lobsinger has painted a full-length lake and mountain scene and some have ventured that on being pursued by Mr. Kaster, the pike made a dash for the open lake depicted in the ex-mayor's work of art, and which proved to be a rare painting masterpiece and not the actual features of nature, much to the ill-fate of the fish.

The first ship of which we have any description was Noah's ark. Assuming a cubit to be 18 inches, the ark was 450 feet long, 75 feet wide and 45 feet deep.

**HELD AS KILLER.**



Captured by New York police after he allegedly shot and killed a high school sophomore and wounded six other persons, a man, identified by police as Marko L. Markovitch, is shown in custody. Creeping up behind a group of parochial school students, the killer fired two guns, downing the victim, Thomas P. Brady of New York, then fled with crowds of students, spectators and police at his heels. He was captured after he had taken refuge on the third floor of an apartment building.

**FARR'S ELEVATOR**  
CLAREMONT  
Phone 38W Res. 38J  
Robert Millar, Brougham.  
FOR SERVICE

Western Grain, Chop, Ajax Oats, free of weeds; No. 21 Barley; Alfalfa Seed and Clover Seed.

Wooden Shingles at \$6.50 a square  
Master Feeds are proven. Have a bag of Master Chick Starter on hand.

Maple Leaf Cafeteria Feeds, Peat Moss; Wood's Milking Machines and Coolers.

**Stouffville Sand & Gravel Limited**  
are prepared to supply your requirements of Crushed Gravel, Sand, Concrete Gravel Pit Run, delivered or at the bin.  
Plant Phone — 5820  
Office Phone 370

**ATTENTION FARMERS**  
We are Paying the Highest Prevailing Prices for Dead or Crippled Farm Animals  
**HORSES — CATTLE — HOGS**  
Telephone Collect for Immediate Service  
**GORDON YOUNG Limited**  
Toronto AD. 3636  
Stouffville 255 Uxbridge 27

**SPEEDY, EASY WAY TO PAINT WALLS!**  
**Speed-Easy**  
THE REAL OIL PAINT THAT THINS WITH WATER  
Decorate tastefully and easily, yet economically. SPEED-EASY is so quick and easy to use . . . so inexpensive. Just mix with water — no special thinners needed.  
**TO PASTEL COLOURS AND WHITE**  
ONE COAT COVERS Apply over plaster, wallboard, wallpaper, concrete, brick.  
THINS WITH WATER 1 gallon mixed with water makes up to 1 1/2 gallons of paint.  
DRIES IN 1 HOUR Then you can replace curtains and furniture, use the room.  
EASY TO WASH In about 2 weeks, you can wash finish with mild soap and water.  
**C-I-L INTERIOR FINISHES**  
C-I-L Interior Finishes for walls and woodwork . . . C-I-L Varnishes to bring out the full beauty of natural wood — these are marvellous tonics for drab rooms, dull floors and stairways. Like all C-I-L Finishes, they have the durability, the long-term economy you rightfully expect from high-quality paints.  
There's a C-I-L Finish for every painting need—inside and out. Before you paint, whether a chair, a room or a house —  
**C-I-L PAINTS**  
SEE YOUR C-I-L PAINT DEALER  
**W. F. RICHES**  
HARDWARE STOUFFVILLE, ONT.  
**C-I-L PAINTS**