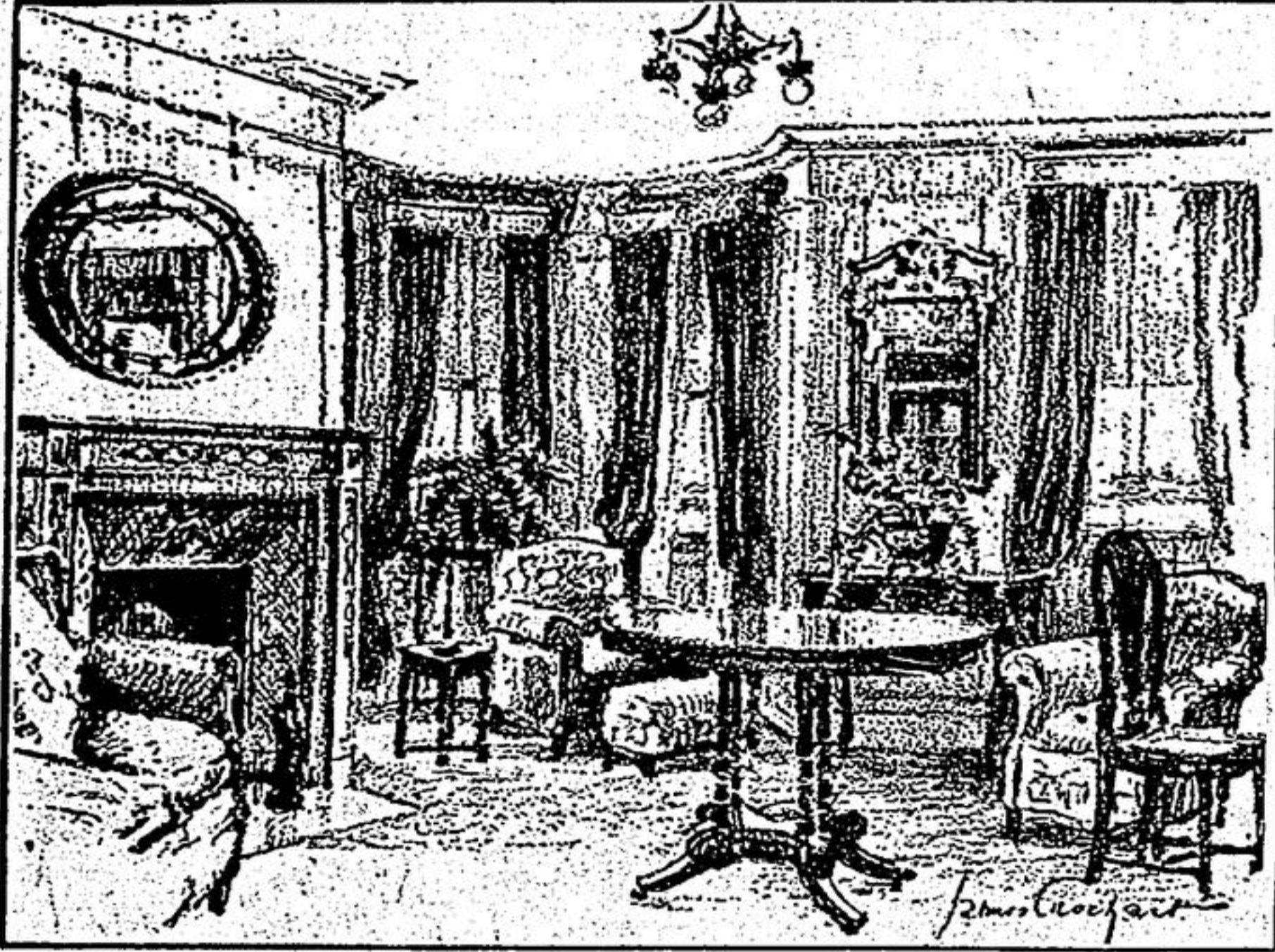
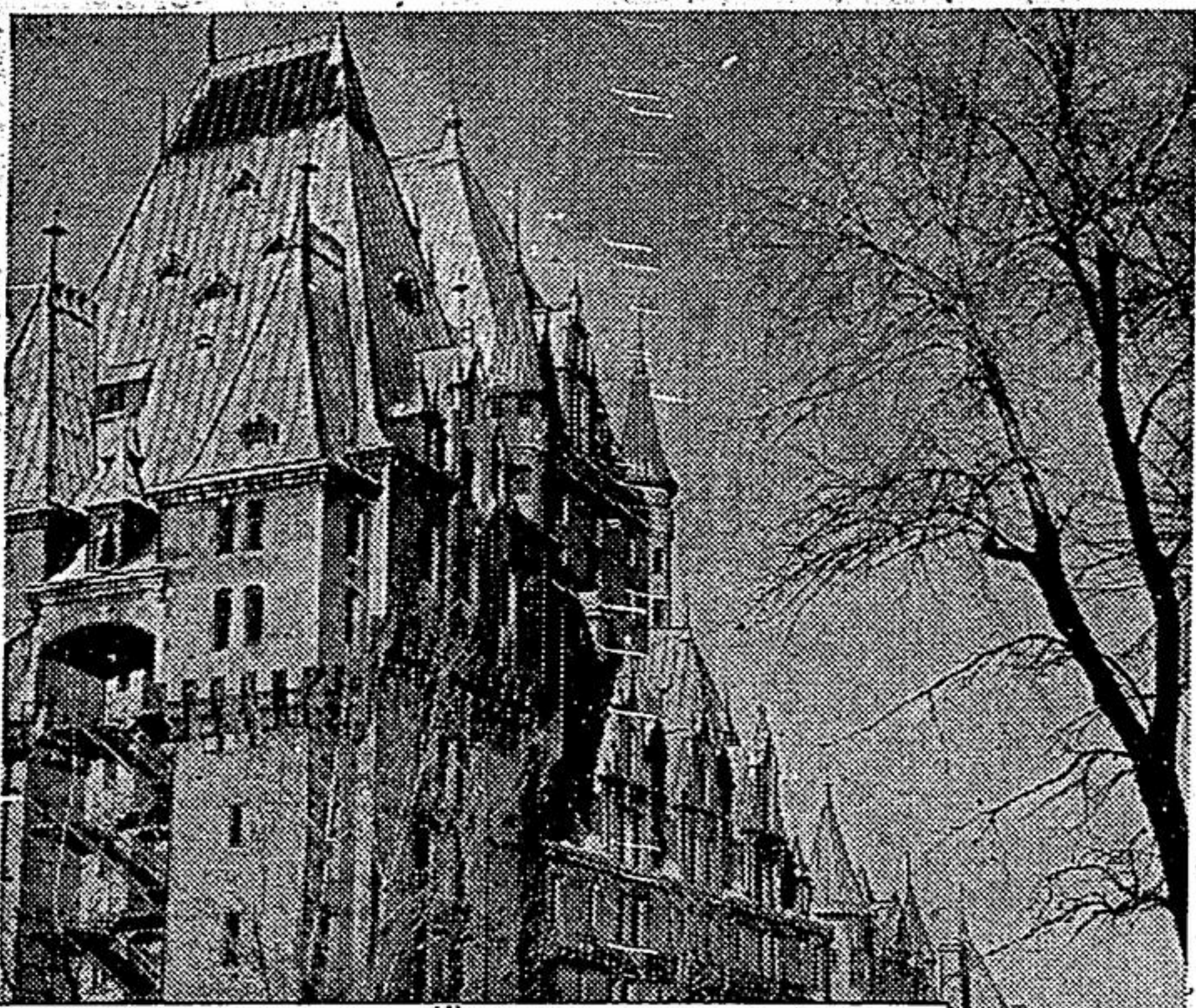


Where Allied Leaders Planned Axis Defeat



Historic Chateau Frontenac, Quebec, nerve centre of Conference when Prime Minister Churchill and President Roosevelt approved final arrangements for destruction of Germany and Japan. Inset shows artist's drawing of living room of Royal Suite.

AUCTION SALE

FARM STOCK and IMPLEMENTS and HOUSEHOLD FURNITURE

The undersigned has received instructions to sell by public auction at

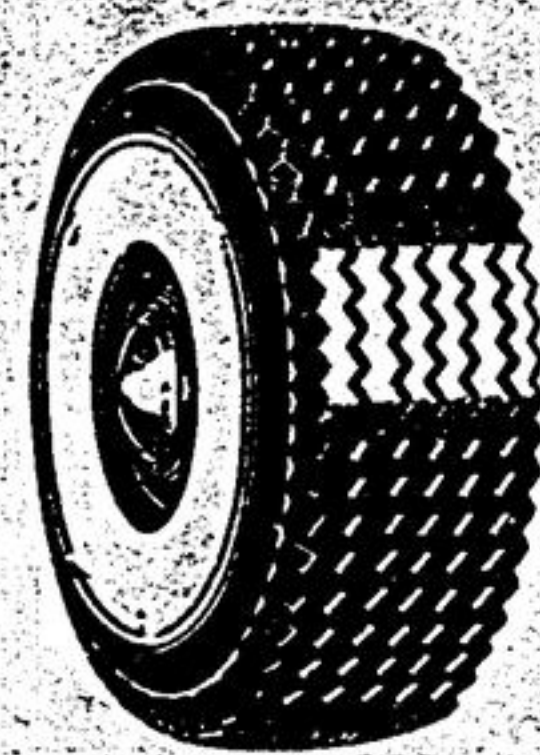
LOT 4, CON. 5, WHITCHURCH half mile south of Bethesda

Sat., Sept. 30

1944, the following property belonging to

G. W. Lyon

- Bay Mare, 9 yrs., good worker
 - Sow, due about time of sale
 - About 60 Rock Hens
 - Horse Truck Wagon
 - Plough
 - Scuffer
 - 3 Sections Harrows
 - Combined Seeder and Cultivator
 - Cream Separator Massey-Harris
 - Cutter
 - Light Bob Sleighs
 - Old Cutting Box & root pulper
 - Range Shelter
 - Saddler's Horse
 - Set Team Harness
 - 2 Feed Boxes
 - Set Single Harness, heavy
 - Horse-Power and 3 Tumbling Shafts
 - Forks, Shovels
 - Quantity of Lumber and Wood
 - Logging Chains
 - Grindstone
 - Cross-Cut Saw
 - Step-Ladder
 - Brooder Stove
 - Lawn Mower
 - Bag Holder
 - Fattening Crates
 - Ladder, 22 ft.
 - Tool Chest
 - Ladder, 16 ft.
 - Tool Chest
 - Work Bench
 - Tether Chains
 - Quantity Buckwheat, not cut
 - Quantity of Oats in straw
 - Half acre of corn heavily loaded in stook
 - 6 Chairs, dining-room
 - Dining-Room Extension Table
 - Secretary
 - Congoleum Rug
 - Cook Stove, Tudhope-Anderson
 - Couch and Mattress
 - Kitchen Cabinet
 - 6 Kitchen Chairs
 - Corner Cupboard, antique
 - Small Cupboard
 - Electric Grill
 - Electric Iron and Cord
 - Stove (Happy Thought)
 - Hand Washing Machine
 - Small Churn
 - 2 Rocking Chairs
 - Dishes and Cooking Utensils
 - Small Kitchen Table
 - Books
 - 2 Trunks
 - 4 Wooden Beds and Springs
 - 2 Dressers
 - Washstand
 - Large Wool Rug
 - Bokstand
 - Medicine Cabinet
 - High Chair
 - 4 Small Tables
 - 2 Clocks
 - Leather Covered Settee and Two Matching Chairs
 - Sewing Machine
 - 2 Coleman Lamps
 - Coal-Oil Stove and Oven
 - Coal-Oil Heater
 - Bird Cages
 - Breeding Cage
 - Other Articles
- Terms, Cash No Reserve
A. S. FARMER, Auctioneer
Sale at 1 o'clock



COMMERCIAL TIRE DEPOT

Synthetic Tires		Pre-War Tubes	
Size 550x17	\$15.50	Group C18-19	\$2.75
Size 600x16	\$17.25	Group C17	\$2.45
Size 525x18	\$14.10	Group B19	\$2.10
Size 500x19	\$11.75	Group A20-21	\$1.65
Size 500x20 (Pre-War)	\$10.85	Group C20-21	\$3.10
Size 30x3 1/2 (Pre-War)	\$6.85	30x3 1/2	\$1.20

Seat Covers for all makes of cars at Special Prices

Paris Auto Supply

JOS. PARIS

RICHMOND HILL, ONT.

THE CANADA YEAR BOOK

The 1943-44 edition of the Canada Year Book, published by authorization of the Hon. James A. MacKinnon, M.P., Minister of Trade and Commerce, is announced by the Dominion Bureau of Statistics.

On grounds of war-time economy, the 1943 edition of the Year Book was not published and the present volume has therefore been planned to cover developments over a two-year period, perhaps more important from the standpoint of the changes in our internal economy than any other like period in the Dominion's history.

By a special concession, a limited number of paper-bound copies have been set aside for ministers of religion, bona fide students and school teachers, who may obtain such copies at the nominal price of \$1.00 each. Application with remittance for these special copies must be forwarded to the Dominion Statistician, Dominion Bureau of Statistics, Ottawa.

LUMBER FUTURE BRIGHT

Our lumber industry will be in a favored spot when the war is over. Negotiations have been in process between the British Timber Control Office and eastern and western Canadian lumbermen for the export of 2,400,000,000 feet of lumber in the two years after, and this will involve a transaction of nearly \$140,000,000. Canada is expected to become the chief source of lumber for British reconstruction in the immediate post-war years, because of the heavy demands on all the Baltic countries except Sweden for their own domestic reconstruction. Britain's demands for lumber can be gauged by the report that the robot bombs damaged or destroyed a million homes or buildings in their own little "blitz."

FLEW 10 MISSIONS



Warrant Officer Ray Guertin of Ottawa flew on 10 missions that were most dangerous from Brahmaputra in Northern Assam to a small lake inside Burma to rescue badly wounded Chindits of the Wingate Expedition. His parents reside in Rimouski, Que.

WE ARE SPECIAL AGENTS FOR



MANUFACTURED BY **Consolidated Specialties Limited**

THE STOUFFVILLE TRIBUNE

The Tribune Classified Ads Get the Best Results

The Goodyear Dealer is YOUR TIRE ADVISER!

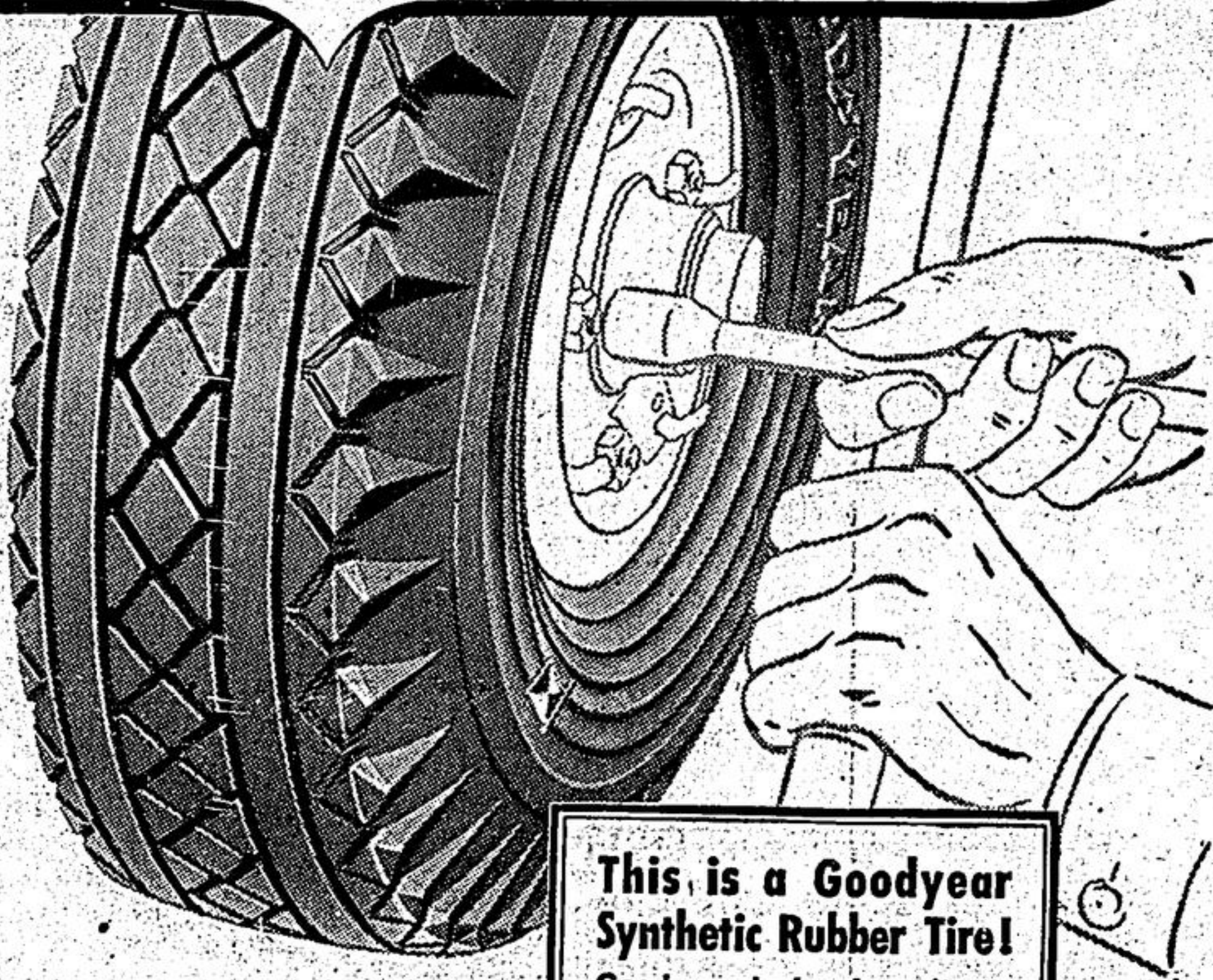
● If every motorist knew all there was to know about a tire, he wouldn't need the expert services of a Goodyear Dealer. He'd just buy a tire . . . that's all! But, it's well to remember that even the best tires and tubes . . . Goodyears . . . give still greater mileage and finer performance when properly fitted to the rims and regularly maintained and serviced.

If you are eligible to buy the new Goodyear synthetic rubber tires and tubes, here's a fact worth knowing. Every Goodyear Dealer KNOWS HOW to apply them, and how to maintain and service them right from the minute your car starts to roll on them.

In the past few years Goodyear Dealers have given yeoman service to Canadian motorists. During the rubber famine, tires have been kept in service by the application of new methods, new skills and sheer hard work. The Goodyear Dealer always has been the right man to know . . . the guardian of tire miles.

The amazing tire performance enjoyed by Goodyear owners during this period has but proved what Goodyear has long maintained. That, with proper care, a new tire can be confidently expected to yield outstanding mileages.

As a tire expert, your neighbourhood Goodyear Dealer can pass on to you benefits accrued through the nation-wide experience of Goodyear . . . benefits that mean longer life and better performance from your tires.



This is a Goodyear Synthetic Rubber Tire!
Goodyear dealers have it . . . for eligible drivers only. It is the result of Goodyear's forty years' experience in tire-building plus Goodyear's specialized knowledge of synthetic rubber . . . gained through unceasing research and testing.



So far this year, Long Distance calling is almost 10 per cent. heavier than in 1943, when toll calls set an all-time high.

So it is obvious why we must all continue to avoid needless Long Distance calls. Otherwise, pressing war business may be seriously delayed. And such delays can cost lives!

Please make only necessary calls.

REMEMBER — NIGHT RATES NOW BEGIN AT 6 P.M.

On Active Service  Giving Wings to Words