

MacLaren's "Guest" Jelly Powders 6 packages 25c
Quaker Puffed Wheat Per. Pkg. 10c
Grape Nut Flakes Per Pkg. 10c

Soap Prices Advancing

So take advantage of these bargains
10 Bars Comfort Soap with 40c
1 Pkg. Handy Ammonia, Free
Campbell's Pork & Beans 28 oz. tin 10c
Tiger Salmon, 1-lb. can 20c
Woodbury's Facial Soap, now 3 cakes 25c
Patterson's Fruit Puffs, per lb. 25c
Oxford Cream Cheese, 2 pkgs. 25c
Aylmer Pure Chicken Soup, per tin 23c
Neilson's Cocoa, per tin 10c
Junket Ice Cream Powders, pkg. 10c
Tea-Bisk, per pkg. 25c

Fresh Lake Nipigon Fish every Tuesday and Thursday
FRESH FRUITS AND VEGETABLES IN SEASON

Ratcliff & Co.
STOUFFVILLE, ONTARIO

MONUMENT TO CHAMPLAIN, ORILLIA

Erected in memory of the great French explorer, first white man to penetrate the wilds of Ontario, this striking monument has been acclaimed as one of the finest pieces of bronze statuary in the World.

Travel by motor coach to enjoy an interesting visit in Orillia and the surrounding district, Old Huronia, former country of the Algonquins, with its many intimate reminders of early pioneer days.



TICKETS, TIME TABLES, and all Coach Travel Information at ANDERSON—PHONE 158

MULOCK ASKS FOR SLUM CLEARANCE

Urging a more "useful" expenditure of the money, W. P. Mulock, member for North York, opposed in parliament a vote of \$1,000,000 for the construction of a tunnel under the western gap of Toronto harbour.

There is no use saying that we are trying to block the expenditure of this money in the city of Toronto, because that statement would not be correct," Mr. Mulock said.

Supporting Mr. Mulock's contention that slum clearance would be a better way to spend the money in Toronto, Ross Gray, Liberal member for Lambton, read from the housing report of Dr. H. A. Bruce, lieutenant-governor, as follows:

"Our survey of Toronto housing conditions reveals that there are thousands of families living in houses which are insanitary, verminous and grossly overcrowded. "Bad houses are not only a menace; they are active agents of destruction. The committee is satisfied from its investigations and inquiries that they destroy happiness, health and life. They destroy morality and family ties. They destroy the basis of society itself by their destruction of self-respect and their promotion of delinquency and crime."

How sleep comes is still a mystery to scientists. A great many theories have been advanced to explain the riddle, but none has been acceptable. One theory explains that sleep comes somewhat in the manner of pulling all the plugs out of a switchboard to stop all conversations. The conduction pathways in the nervous system are broken by the refraction of small contact points between the neurones, which are the conducting units that form the nervous system.

GOOD-BYE TO POTATO CONTROL

As generally expected the attempt under the Natural Products Marketing Act to control potato marketing has been dropped, at least so far as the old crop still being marketed is concerned.

Observers with many years experience either in marketing or growing farm crops predict failure for the whole attempt at marketing control. They point out that the farmer is an individualist. He has, in most cases, scores of outlets for his products. He may grow potatoes one year and beans or early vegetables the next.

So far in the abortive scheme to control potatoes no apparent gain was reaped by the grower whereas the honest wholesaler and retailer who tried to carry out official orders suffered considerable loss. They loaded up with potatoes at the regular price only to find themselves short-circuited by hucksters who had gone out into the country, bought surplus spuds at low prices and bootlegged them in the towns and cities.

SOLICITORS ANNUAL DINNER HELD

One of those annual gatherings of municipal heads always looked forward to with keen delight is the dinner tendered by Mr. Harry Naughton which again was held in Newmarket, when about 125 guests from King, Whitechurch, Markham, Gwillimbury, Aurora and Newmarket sat down to a wonderful repast.

A mirthful part of the program was a contest between two quartettes, in which Deputy Reeve Jas. Rennie figured in the fat man's four. We never learned just what the fat man rendered, but they did sing and our genial deputy was right in on the right chord.

Mr. J. Walton, one of the speakers, referred particularly to Whitechurch as not having "a dollar of bonded debt." He told of a cottage in Whitechurch on a good-sized lot, and taxes of only \$5.30.

Speakers included Reeve Newton Rae of Whitechurch township, Mayor Dr. C. R. Boulding of Aurora, Reeve George Padgett of Markham township, Reeve J. A. Knowles of Aurora, Deputy-Reeve Bob Scott of Vaughan township, Howard Gane, Newmarket, county sheriff and former mayor of Newmarket; Reeve Norman McMurchy of King township, whose 80-year-old father, Sandy McMurchy, ex-reeve of King, was present; Reeve J. A. Greene of Richmond Hill, Deputy-Reeve Ernest Morton of North Gwillimbury township, P. M. Thompson of Aurora, Clerk M.L. Andrews of Aurora, Clerk H. H. Sawden of King township, Clerk John Crawford of Whitechurch township, Inspector French of Aurora, County Treasurer W. W. Gardhouse and County Treasurer J. E. McDonald of Aurora.

WAX PLUCKING OF POULTRY

Both the material and the method for the wax plucking of poultry have now reached the stage of commercial application, and demonstrations will continue to be given at strategic points throughout the Dominion as arranged. This development is the successful result of the research work carried out during the past winter by the National Research Council of Canada in conjunction with the Live Stock Branch of the Dominion Department of Agriculture.

ADDITIONAL AMMENDMENTS TO STATUTES

This bulletin is issued for the purpose of drawing to the attention of officials some of the important changes in the general statutes relating to municipalities passed at the recent Session of the Legislature and which came into force on 19th April, 1935

Assessment Act (Bill No. 115) Buildings of a cold storage plant which is aided by the Dominion or Province are to be exempt from taxation. The exemption does not extend to the land assessment unless a by-law for the purpose is passed under the Municipal Act.

By an amendment it is made clear that a municipality as well as an owner may bring assessment appeals before the Municipal Bd. The maximum penalty for non-payment of taxes on due date which may be imposed by by-law is reduced from five per cent to four per cent.

The maximum discount which may be allowed for pre-payment of taxes is increased from five per cent per annum to six per cent per annum.

Penalties upon arrears of taxes are now made the same for all municipalities and in future interest will be added at the rate of 1-2 of 1 per cent per calendar month (or portion thereof) on all taxes which remain unpaid after 31 December of the year in which the taxes are levied.

The change in cities is that the interest charge now runs from 1st January instead of 1st May.

The change in other municipalities is that the old statutory penalty of a straight 10 per cent added on 1st May is abolished and the interest charge at the rate above mentioned to be added from 1st January is substituted.

Interest is to be added to the outstanding taxes only and not compounded.

Where the county treasurer collects arrears he will add interest as above mentioned from the time the arrears come into his hands.

School Law Amendments (Bill No. 130)

For practice teaching for teachers in training the Department of Education is given authority to use any school.

Candidates are not eligible as

public school trustees if their school taxes are unpaid or if the candidate is a qualified relative of an owner whose school taxes are unpaid. Township grants towards public school teachers' salaries are payable only if the teacher's salary is at least \$500. In cities and towns separate school boards can now be reduced in size, so that in a city it will be composed of one trustee only for each ward and in towns of six trustees only. Where a public school board fails to hold the first meeting of the year on the date fixed by the statute, the inspector may call the meeting.

Ford Used Car DEPOT

- 1 Ford Coach VS 1932
1 Ford Coupe, Standard 1931
2 Ford Coupes Standard 1930
1 Ford Coupe, Sport 1930
1 Durant Sedan Special 1931
1 Durant Coupe, Special 1931
1 Essex Coach 1930
1 Ford De Lux Sedan 1931
1 Ford DeLux Sedan 1930
1 Ford Tudor Standard 1930
1 Hupmobile Coach 1927
2 Willys Knight Sedan 1927
1 International Truck 1932
2 Ford one and half Ton Stake Trucks 1930
1 Ford one and half ton Stake Truck 1929
1 Ford Panel Delivery 3/4 Ton 1931
1 Ford Light Delivery 1929

Also a number of other good used cars reconditioned. These cars are all sold under a 5 day exchange trial or a 3 day money back guarantee, also a free ticket on every \$10.00 paid for used car, on the draw for the \$300 Ford VS Coach.

D. F. Holden

Ford Sales and Service
Phone 18401 Stouffville Phone 120 Markham

SEED CORN TURNIP SEED

We carry a full line of Seed Corn and Turnips seed at competition prices.

Cement on hand at all Times. Land Tile.

MARMILL POULTRY FEEDS

And all Other Stock Feeds
Flie Spray, Arsenate of COAL and COKE

S. W. HASTINGS

Phone 169, Stouffville.

SUMMER SUGGESTIONS

DRESS GOODS

Sparva Taffeta in dainty floral patterns an exceedingly attractive material, yd. 50c
Voiles in Plain and Floral Patterns, yd. 45c
Dimity, in small patterns for blouses, on children's Dresses, per yard 35c
Plain and Printed Crepes, in all colours Priced at 89c to \$1.59

A SPECIAL IN DRESS RAYONS

A good variety of colours and patterns in this lot, regular 39 and 49c. This is a real money saving value at per yard. 29c

WOMEN'S BLOUSES

An exceedingly attractive line of womens blouses, in plain, floral and plaid patterns, in Crepe, Angelskin, dimity and voile. Dainty creations that will make an instant appeal to the particular purchaser. Priced at, from \$1. to \$2.50

WOMEN'S COTTON VESTS and BLOOMERS.

Made from selected combed cotton, of a fine even weave. These vests and bloomers are real values at each 29c

WOMEN'S COTTON HOSE

Splendid value at the price, in sizes 8 1/2 to 10 and in brown, gray and black. A good serviceable hose for everyday wear, at per pair 19c-25c

48 INCH SHADOW CLOTH

Delightfully unusual designs and colorings that are sure to please all tastes. Lovely for slip covers, cushions and overdrapes—Note the width 48". Per yard .. 60c, 75c, 95c

SUMMERY DRESSES

That will turn you out smartly for the summer season. Plain and Printed Crepes, in most attractive styles for afternoon or street wear. All our dresses are personally selected with a view to meet the needs of our customers, and you will find both quality and price entirely satisfactory. Prices range from \$3.95 to \$10.75

Store open Tuesday, Thursday, and Saturday Evenings.

The W. H. Shaw Store

Phone 9512 Stouffville, Ontario.

SCHOOL HOSE FOR BOYS AND GIRLS

A good sturdy serviceable hose that will stand the hard wear. In all sizes. We have them in two grades 19c-25c

ANGELSKIN SLIPS

Women's Slips of fine Angelskin, plain and lace trimmed, generous size and well finished priced at 95c-\$1.25

WALL PAPERING TIME

Have your rooms freshly papered before the warm weather comes. A most delightful array of beautiful wallpapers is provided for your choice. Designs for all your rooms. There are fashionable plastics, floral, scenic, almost plain, tile and marble effects, and all are suntested papers. And prices are extremely moderate. Come in and see them.

GREEN GLASS BOWL SETS

An exceptional value in Glass Bowls. Set of five Bowls in green glass, with heavy rolled edge. A sturdy serviceable bowl, large size 9", small, 5". Nest of 5 Bowls 95c

EFFENDI BAKING CASES

100 Grease Proof Baking Cases for drop cakes, etc. Package of 100 for 10c

PAPER PICNIC PLATES

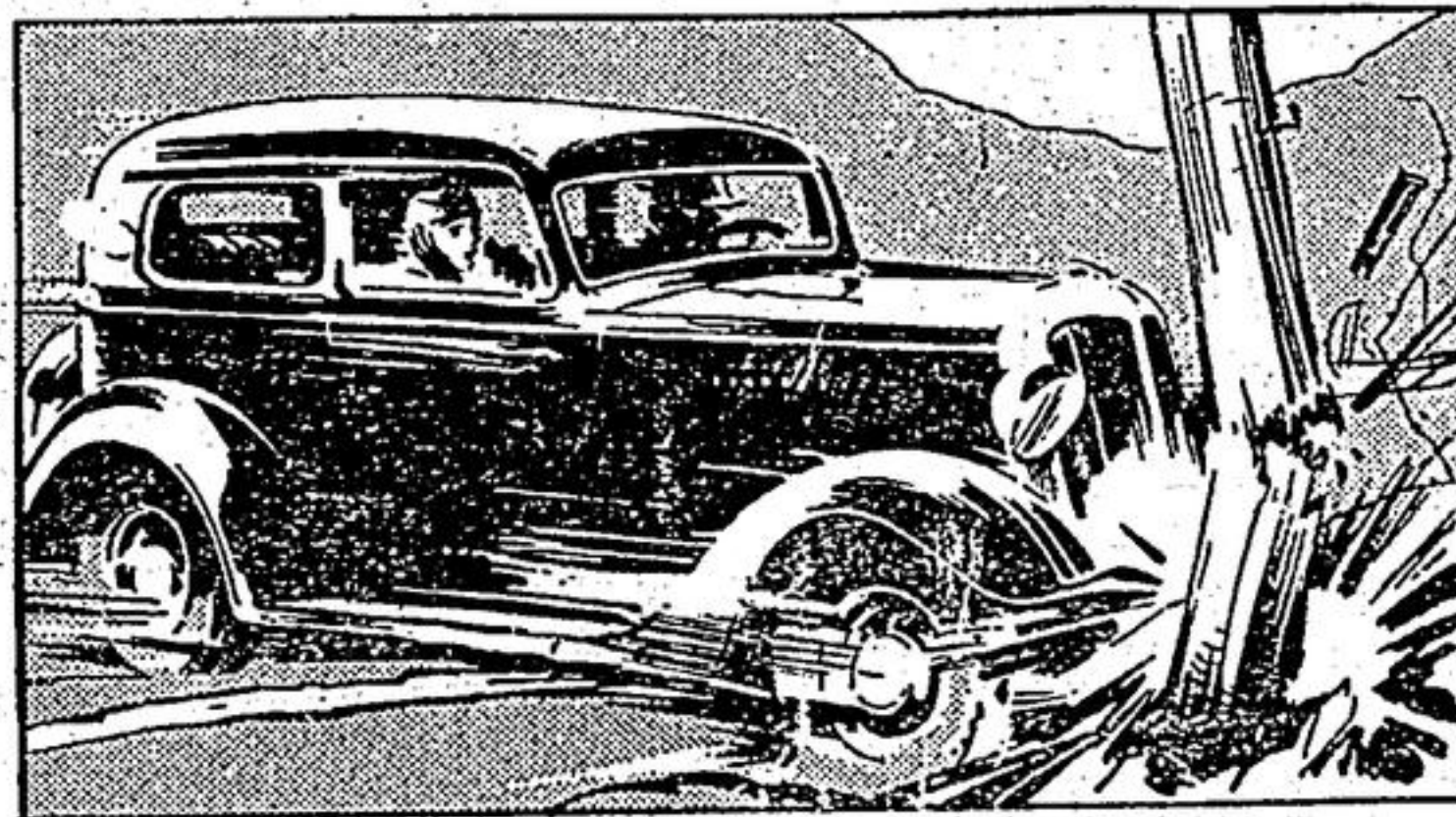
Save yourself work by using these paper plates, 8 1/2" size, 2 dozen for 15c

GIFT CHINA AND GLASSWARE

An unequalled display of useful and fancy dishes suitable for shower or wedding gifts. Dainty English bone china Cups and Saucers; finely decorated Plates, Glassware in pink, amber, topaz, and crystal. Prices from 10c to \$10.00

ENGLISH KITCHEN BOWLS

Set of four Bowls in nest, attractive colourings of mottled green, blue and rose. Also stripes and floral, per set 79c



A TYPICAL BLOW-OUT ACCIDENT— BUT DON'T LET IT HAPPEN TO YOU

EVERY DAY THE GOLDEN PLY TIRE SAVES LIVES

Gives Blow-out Protection at Today's High Speeds

Day after day—week after week, motorists are switching to Goodrich Safety Silvertowns for real blow-out protection. They're wise, for at today's high speeds, no one can afford to be without Life-Saver Golden Ply blow-out protection. And these Silvertown customers are discovering that they're saving money, too—that they're getting months more mileage with Silvertowns.

NO EXTRA COST

Stop in and let us fix you up with a set of Silvertowns. The amazing Life-Saver Golden Ply will protect you from these dangerous blow-outs at no extra cost. The extra-thick, deep-grooved Silvertown tread, with big, husky cleats also protect you from "tail-spin" skids.



LOOK FOR THE MOUNTIE

This sign tells you we sell Goodrich Silvertowns with Life-Saver Golden Ply.

The NEW Goodrich Safety Silvertown WITH LIFE-SAVER GOLDEN PLY

J. H. SILVERTHORN

Garage Phone 17002

Residence 17003