

# More Pounds of Flesh More Quarts of Milk

THINK of it! Schumacher will produce more pounds of flesh on a hog and more quarts of milk from a cow at less cost per unit than any other feed that can be fed.

It is a palatable, kiln-dried ration, perfect in balance. All animals eat it greedily and digest it every bit.

Schumacher Feed is manufactured from milled products of Corn, Barley, Wheat, Oats and Linseed Meal, evenly ground, sold in new sacks which carry the Government guaranteed chemical analysis.

Keep a generous supply of Schumacher in your feed bins. The results will convince you of its value.

## SCHUMACHER FEED

STIVER BROS.

### FIRST LABORATORY IN CANADA TO WAGE WAR ON EUROPEAN CORN-BORER

St. Thomas Selected as Site of Plant for Breeding Parasites—Millions to be Sent Against Pest Which is a Menace to Cornfields, Especially in South-Western Ontario.

St. Thomas, May 27.—As a means of assisting in the control of the European corn-borer, a laboratory for the breeding of parasites, that have been discovered by the United States entomologists in Europe has been established in this city, with A. B. Baird of the Dominion Entomological Department in charge, and H. G. Dyce, a graduate of the University of Toronto, Assistant Superintendent.

The laboratory is the first of the kind in Canada, and is located here on account of Elgin being the centre of the infested area. It will be operated similarly to the parasite laboratories in the United States, and a consignment of parasites from the

Washington Agricultural Department is being sent here. A party of entomologists under the direction of Arthur Finnamore of the Dominion Department, have been in the district for several days collecting large quantities of borers for experimental purposes. If the parasite to be bred here proves effective in subjugating the borer, as expected, millions of them will be liberated from the laboratory to prey on the pest that threatened the extinction of the corn industry in Ontario. Experiments made with the parasite in Massachusetts, which is the centre of the United States infested territory, are reported to have been very successful.

### The Week's Markets

#### TORONTO.

Manitoba wheat—No. 1 Northern, \$1.20.  
Manitoba oats—No. 2 CW, 56c; No. 3 CW, 53c; No. 1 feed, 51 1/2c.  
Manitoba barley—Nominal.  
All the above track, bay port.  
American corn—No. 8 yellow, \$1.10; No. 2, 99 1/2c; accord.  
Barley—Malting, 60 to 62c, accord.

#### HORSE REGISTER

POMEROY—The American Standard Bred Stallion Pomero 59099—will stand at his own stable lot 271, Con. 14, Whitechurch, for the season. Pomero has a record of 2.24 1/2 and a trial mile in 2.15. Extra well bred and a handsome black trotting horse. Milton Sherdan, prop.

Mac Brino—The Standard Bred Roadster Stallion an animal with the finest record of any light stallion in the district, will again be at Mansion House, Exbridge, for 1923 season on Tuesday night and Wednesday morning each week. Tuesday noon at Goodwood. The remainder of the week he will be at his own stables in Stouffville. Ask for printed pedigree. Peter Widdeman, owner.

Golden West King—Pure bred city desade stallion Golden West King [22875], thoroughly inspected and properly enrolled. Sire Lambert Imp. [15239], (27339). Dam Blossom of Ringwood [32925]. G. dam Golden West Queen [32924]. G. dam Lady Orde Imp. the property of Abner M. Baker, will stand at his own stables and Tuesday noons at Gilbert Bros. lot 12 concession 6, Whitechurch; Friday noons at Robt. Wintonstein's, lot 9, concession 10, Whitechurch. To insure a foal \$12, payable Feb. 1st, 1924.

LAMBTONS MODEL 21583—the property of John Fisher, Ringwood, will stand for service at his own stable, Ringwood. Sire Lambert Imp. dam Nellie of Ringwood, 31113, by Lorburne, imp. 5780, and dam Jess Currah 5712, by Prince Currah imp. 2952, 3rd dam Maid of Balsam 5722, by Sir Wal. for imp. 11131, 4th dam Bet 5720, by Laird of Rath imp. 2808, 5th dam Vick 5721, by Clansman imp. 267, by Rob Roy imp. 250, by Heart of Oak imp. 165, by Sir William Wallace, imp. 123. This young stallion was 1st as a yearling at the Toronto International and 1st as a two years old, and the reserve championship. This horse breeding is second to none. Enrollment No. 306, approved form 1. The premium stallion Lambton, imp., will also stand at his own stables. Terms: To insure a foal \$10, payable Jan. 1st, 1924.

ing to freights outside.  
Buckwheat—No. 2, 74 to 76c.  
Rye—No. 2, 79 to 81c.  
Peas—No. 2, \$1.45 to \$1.50.  
Millfeed—Del. Montreal freights, bags included: Bran, per ton, \$29; shorts, per ton, \$31; middlings, \$36; good feed flour, \$2.15 to \$2.25.  
Ontario wheat—No. 2 white, nominal.  
Ontario No. 2 white oats—51 to 53c.  
Ontario corn—Nominal.  
Ontario flour—Ninety per cent. pat. in jute bags, Montreal, prompt shipment, \$5.10 to \$5.20; Toronto basis, \$5.05 to \$5.15; bulk, seaboard, \$4.95 to \$5.  
Manitoba flour—1st pats. in cotton sacks, \$7.10 per bbl.; 2nd pats., \$6.60.  
Hay—Extra No. 2 timothy, per ton, track, Toronto, \$15 to \$15.50; No. 3 timothy, \$14; mixed, \$12 to \$13.50; lower grades, \$8.  
Straw—Car lots, per ton, track, Toronto, \$9.50.  
Cheese—New, large, 19c; twins, 21c; triplets, 22c; Stilltons, 22c; Old, large, 32c; twins, 32c; Stilltons, 33 1/2c.  
Butter—Finest creamery prints, 35 to 36c; ordinary creamery prints, 33 to 34c; dairy, 24 to 25c; cooking, 28c.  
Eggs, new, laid, loose, 32c; new laid, in cartons, 38c.  
Live poultry—Chickens, milk-fed, over 5 lbs., 25c; do, 4 to 5 lbs., 22c; do, 2 to 4 lbs., 20c; hens, over 5 lbs., 28c; do, 4 to 5 lbs., 26c; do, 3 to 4 lbs., 22c; roosters, 17c; ducklings, over 5 lbs., 80c; do, 4 to 5 lbs., 28c; turkeys, young, 10 lbs. and up, 25c.  
Dressed poultry—Chickens, milk-fed, over 5 lbs., 35c; do, 4 to 5 lbs., 30c; do, 2 to 4 lbs., 25c; hens, over 5 lbs., 30c; do, 4 to 5 lbs., 28c; do, 3 to 4 lbs., 24c; roosters, 24c; ducklings, over 5 lbs., 30c; do, 4 to 5 lbs., 29c; turkeys, young, 10 lbs. and up, 30c.  
Beans—Canadian, hand-picked, lb., 7c; primes, 6 1/2c.  
Maple products—Syrup, per imp. gal., \$2.50, per 5-gal. tin, \$2.40 per gal.; Maple sugar, lb., 25c.  
Honey—60-lb. tins, 10 1/2 to 11c per lb.; 30-lb. tins, 11 to 12 1/2c per lb.; Ontario comb honey, per doz., No. 1, \$4.50 to \$5; No. 2, \$3.75 to \$4.25.  
Potatoes, Ontario—No. 1, \$1.40 to \$1.50; No. 2, \$1.25 to \$1.40.  
Smoked meats—Hams, med.; 28 to 28c; cooked hams, 38 to 41c; smoked rolls, 26 to 28c; cottage rolls, 25 to 28c; breakfast bacon 30 to 33c; special brand breakfast bacon, 35 to 38c; backs, boneless, 37 to 42c.  
Cured meats—Long clear bacon, 50 to 70 lbs., \$18; 70 to 90 lbs., \$17.50; 90 lbs. and up, \$16.50; lightweight rolls, in bbls., \$36; heavyweight rolls, \$33.  
Lard—Pure tierces, 15 1/2 to 16 1/2c; tubs, 16 1/2 to 17c; pails, 17 to 17 1/2c; prints, 18 1/2c. Shortening, tierces, 14 1/2 to 16c; tubs, 15 to 15 1/2c; pails, 15 1/2 to 16c; prints, 17 to 17 1/2c.  
Choice heavy steers, \$8.25 to \$8.50; butcher steers, choice, \$7.50 to \$8; do, good, \$7 to \$7.50; do, med., \$6.50 to \$7; do, com., \$6 to \$6.50; butcher heifers, choice, \$7 to \$7.50; do, med., \$6.50 to \$7; do, com., \$6 to \$6.50; butcher

cows, choice, \$5.50 to \$6.50; do, med., \$4.50 to \$5.25; canners and cutters, \$2 to \$2.50; butcher bulls, good, \$5 to \$5.50; do, com., \$3.50 to \$4; feeding steers, good, \$7.50 to \$8; do, fair, \$6 to \$6.50; stockers, good, \$6.50 to \$6; do, fair, \$5 to \$5.50; milkers-springers, choice, \$80 to \$110; calves, choice, \$10 to \$11; do, med., \$8 to \$9.50; do, com., \$4 to \$6; lambs, choice, \$13 to \$16; do, com., \$7.50 to \$12; lambs, spring, each \$9 to \$17; sheep, choice, light, \$7.50 to \$8.50; do, choice, heavy, \$6 to \$7; do, culls and bucks, \$4 to \$5.50; hogs, fed and watered, \$11.25; do, l.o.b., \$10.50; do, country points, \$10.25.

#### MONTREAL.

Corn, Am. No. 2 yellow, \$1.01. Oats, Can. West, No. 2, 65 to 65 1/2c; No. 3, 62 to 62 1/2c; extra No. 1 feed, 59c; No. 2, local white, 54c. Flour, Man. spring wheat pats., \$7.30; seconds, \$6.80; strong bakers', \$6.60; winter pats., choice, \$6.15. Rolled oats, bag 90 lbs., \$3.10 to \$3.20. Bran, 228. Shorts, \$30. Middlings, \$35. Hay, No. 2, per ton, car lots, \$15 to \$17. Cheese, finest easterns, 15 1/2 to 16c. Butter, choicest creamery, 30 1/2 to 31c. Eggs, selected, 33c. Potatoes, per bag, car lots, \$1.30 to \$1.35. Canners, \$3.75; med. cows, \$5; good cows, \$5.75; bulls, \$3.50 to \$4.25; calves, med. to fairly good, \$5.50 to \$6.50; do, com., \$4.25 up; good light sheep, \$7; spring lambs, \$5.50 to \$7; do, best, \$18 per cwt. Hogs, \$11.50 to \$11.75 for good lots; sows, \$8 to \$9, depending upon weight and quality.

#### Moose Eat Hay in Barn at the Sault

Sault Ste. Marie, Ont., May 27.—At 11 o'clock Friday night, just as the Thomas family, Pine street, were going to bed, they heard a racket in their barn. Upon investigating, they found two big moose calmly eating hay. The moose were not disturbed, and about 10 o'clock Saturday morning Miss Alice Thomas, who was the first to notice the moose, saw them again in the barn eating hay. To-day the moose are rambling quietly around the woods this side of the new agricultural grounds. They seem to be very hungry, and it is thought that was the reason for the hay lunch.

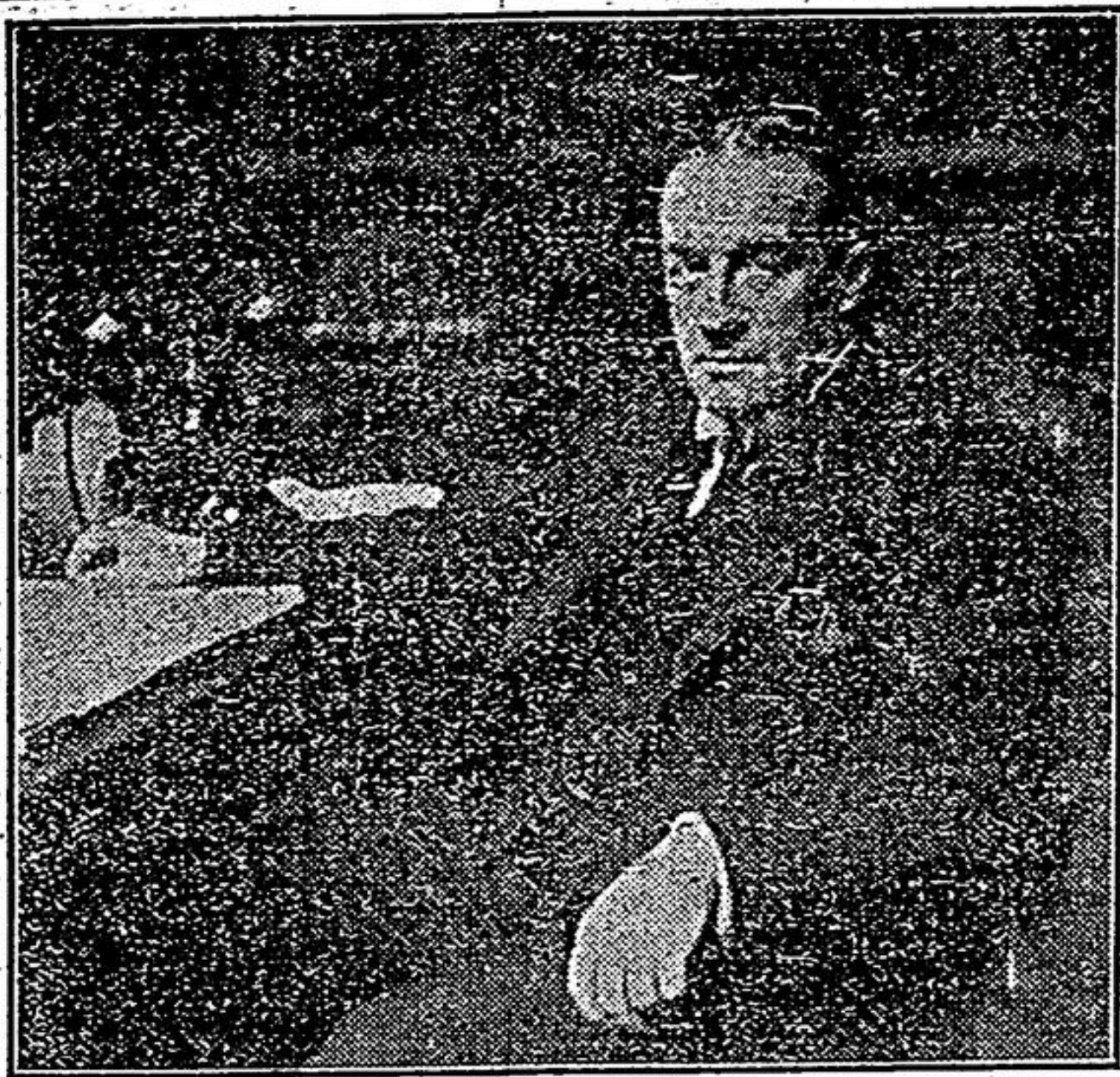
#### Monument at Sault Ste. Marie to First White Visitors

Sault Ste. Marie, Ont., May 27.—The Department of Railways and Canals has authorized the erection on the grounds adjoining the ship canal here of a monument to the memory of Etienne Brule and his companion, Grenolle, who were the first white men to visit the Indian village of Pawitting, the site of the present Sault Ste. Marie, and to look on Lake Superior.

#### WONDERFUL THOUGHTS

'Tis wonderful to think about—  
How God, Creator, spoke,  
And into being forth there came  
This world which He did make!  
And, furthermore to think that He,  
A man should form therein,  
And handing over all that's good,  
Should say, "Now, keep from sin!"  
'Tis wonderful to think about—  
That God should walk down man,  
With man, created, sinless man,  
And hold such converse dear,  
And then again to think that man,  
Who, having all things fair,  
Not satisfied with perfect life,  
Should soon bring sin in there!  
'Tis wonderful to think about—  
That God, so greatly grieved,  
In judging sin should yet see how  
A promise might be weaved!  
And then a sacrifice to make,  
A sinless beast to slay,  
For sinful man a covering—  
Type of a future day!  
'Tis wonderful to think about—  
As time, with years, passed by,  
That sinful man should so increase,  
That God who dwells on high,  
Seeing that now the world was full  
Of wickedness so great,  
Declares He must destroy with a  
flood at early date!  
'Tis wonderful to think about—  
That God who acts in grace,  
A hundred years or more should  
give  
For man to seek his face,  
And so find refuge in an Ark,  
Which o'er the waters deep  
Should float in safety, whilst the  
flood  
Its ravages should reap!  
'Tis wonderful to think about—  
How in these early days,  
Jehovah God so clearly gave  
A token of His ways!  
A judgment still there is to come,  
With death the wage of sin,  
But safety in the Lord there is—  
The Ark's a type of Him!  
Lillian Wagg

#### More than 5,000,000 bushels of grain have been shipped from Edmonton over the westward route to Vancouver so far this season, according to the Dominion Grain Inspector. This total is 2,225,000 bushels in excess of shipments for the preceding year.



BRITAIN'S NEW PREMIER  
Stanley Baldwin was selected in preference to Lord Curzon because he is a member of the lower house. Although a Harrow and Cambridge man, he is also an industrialist and heads many metal-working plants, including one in Toronto. He is fifty-six years of age and formerly served under Lloyd George.

### PERSONNEL OF NEW BRITISH CABINET UNDER PREMIER STANLEY BALDWIN

A despatch from London says:—The new Administration was completed on Friday night, and is in readiness to meet Parliament, which reassembles on Monday.

The official list of the Cabinet and other officials shows the substitution of Lord Robert Cecil as Lord Privy Seal for Andrew Bonar Law, who had held this portfolio, in addition to the Premiership, and the promotion of Mr. Bonar Law's Secretary, John C. C. Davidson, to a place in the Government, as Chancellor of the Duchy of Lancaster. There have also been a few changes in minor offices of the Government, but otherwise the men guiding the country's destinies are the same as those who had this task in hand before Mr. Bonar Law tendered his resignation.

The new ministry is as follows:—  
Prime Minister and First Lord of the Treasury, Leader in the House of Commons and Chancellor of the Exchequer, Stanley Baldwin.  
Lord Privy Seal, Lord Robert Cecil.  
Lord President of the Council, the Marquis of Salisbury.  
Lord High Chancellor, Viscount Cave.  
Secretary for Home Affairs, Rt. Hon. W. C. Bridgeman.  
Secretary for Foreign Affairs and Leader of the House of Lords, the Marquis of Curzon.  
Secretary for the Colonies, the Duke of Devonshire.  
Secretary of State for War, the Earl of Derby.  
Secretary of State for India, Viscount Peel.  
Secretary of State for Air, Rt. Hon. Sir Samuel Hoare.  
First Lord of the Admiralty, Rt. Hon. L. S. Amery.  
President of the Board of Trade, Sir Philip Lloyd Greame.  
President of the Board of Health, Neville Chamberlain.  
President of the Board of Agriculture, Rt. Hon. Sir Robert A. Sanders.  
Secretary for Scotland, Viscount Novar.  
President of the Board of Education, Rt. Hon. E. F. L. Wood.  
Minister of Labor, Rt. Hon. Sir Montague Barlow.  
Financial Secretary of the Treasury, Sir William Joynson-Hicks.  
The foregoing constitute the Cabinet. Other members of the Government are as follows:—  
Minister of Pensions, Rt. Hon. Major G. C. Tryon.  
Chancellor of the Duchy of Lancaster, John Colin Campbell-Davidson.  
First Commissioner of Works, Rt. Hon. Sir John Baird.  
Attorney-General, Rt. Hon. Sir Douglass Hogg.  
Solicitor-General, Sir T. W. H. Inskip.  
Paymaster-General, Major Archibald Boyd Carpenter.  
Lord Advocate for Scotland, William Watson.  
Solicitor-General for Scotland, F. O. Thomson.

# LOW PRICES ON USED CARS

We can quote you surprisingly Low Prices on Used Cars. They are so cheap, it will pay you to have one for "rough weather" and save the more expensive car.

- 1 Gray-Dort Touring Car, a really first-class second hand car
- 1 Ford Touring 1917 Model
- 1 Ford Touring 1918 Model
- 1 Ford Touring 1915 Model
- 1 Ford Touring 1916 Model
- 1 Maxwell 1916 Model, good finish, and good mechanically.
- 2 Ford Touring 1914 Models at Low Prices.

CALL AND SEE THEM  
**R. E. BROWN**  
Ford dealer - Stouffville

## Cream Wanted

Ship Cream to us and be independent

OPEN TUESDAY, THURSDAY and SATURDAY EVENINGS  
Sooner or later you will buy a DELAVAL SEPARATOR. We sell them.

Stouffville Creamery Company  
Phone 18602

## Come to Toronto Motor Car Co. for Used Ford Cars

SENSATIONAL PRICES!  
All these cars have been traded in as part payment on New Fords. We guarantee the title, model and year and protect you against observable defects. Every car guaranteed to be as represented.  
The LOWEST PRICES Ever Quoted on Used Ford Cars

|   |  |   |
|---|--|---|
| \$50 CASH DOWN<br>FORD TOURING<br>In Good Condition<br>Balance \$6.50 month | \$54 CASH DOWN<br>FORD ROADSTER<br>Well-kept<br>Balance \$8.50 month | \$81 CASH DOWN<br>FORD LIGHT DELIVERY<br>Balance \$12 month |
|---|--|---|

### EASY TERMS AS LITTLE AS \$2.00 A WEEK WILL ENABLE YOU TO BUY A FORD THIS YEAR

|   |  |   |
|---|--|---|
| \$105 CASH DOWN<br>Good-looking<br>FORD COUPE<br>Balance \$17 month | \$129 CASH DOWN<br>Excellent Condition<br>FORD SEDAN<br>Balance \$22 month | \$62 CASH DOWN<br>In Good Shape<br>FORD TOURING<br>Balance \$8.50 month |
|---|--|---|

|   |  |   |
|---|--|---|
| \$72 CASH DOWN<br>Reliable<br>FORD ROADSTER<br>Balance \$11 month | \$118 CASH DOWN<br>and \$18 a month soon pay for<br>FORD COUPE | FORD TRUCKS<br>\$66 CASH DOWN<br>Terms: \$9 month<br>FORD TON TRUCK<br>\$67 CASH DOWN<br>Terms: \$11 month<br>FORD TON TRUCK<br>\$81 CASH DOWN<br>Terms: \$12 month<br>FORD TON TRUCK |
|---|--|---|

FULL SET OF TOOLS AND FREE! DRIVING INSTRUCTION, FREE!

|   |   |
|---|---|
| \$24.50 PER MONTH<br>Buys this<br>FORD SEDAN<br>(\$150 Cash Down) | \$72 CASH DOWN<br>Good-looking Reliable<br>FORD TOURING<br>Balance \$11 month |
|---|---|

The above easy terms are for twelve monthly payments and include interest and insurance. Substantial extra savings for ALL CASH. While we always have a good stock of used Fords at low prices, now is the time to buy—when we are at the peak of our Spring business.

**TORONTO MOTOR CAR COMPANY LIMITED**  
"Canada's Largest Ford Dealers"  
152-56 JARVIS ST. TORONTO PHONE MAIN 381

There are three thousand seven hundred licensed grain elevators in the three Prairie Provinces, with a total storage capacity of more than 100,000,000 bushels. The official opening of the 105,000-acre irrigation project of the Lethbridge-Northern district will take place in June. Water is now being turned into the ditches.