

Overland

TRADE MARK REG.

Sturdy—Comfortable—Powerful
YET A MARVEL
OF ECONOMY

\$710

A REMARKABLY
 LOW PRICE

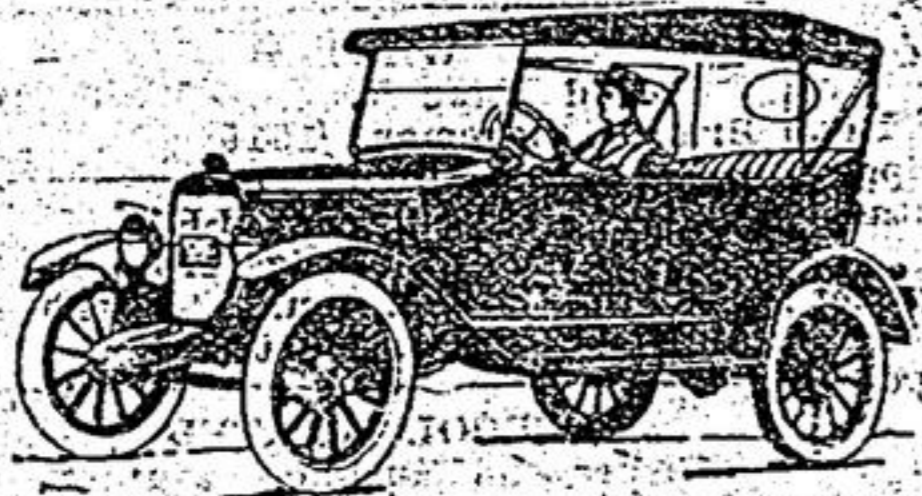
AT present low prices the Overland provides comfortable, reliable motoring at the lowest cost for which such motoring can be had. The Triplex Springs absorb shock and side-sway, and prolong the life of the Car. The Motor returns twenty-five miles—and with some drivers thirty miles and more—to the gallon of gasoline. The gear shifts easily—steering becomes second nature—the driver's seat is comfortable, and the good looks of the OVERLAND commend it everywhere.

SEE THE NEW BLUE BIRD MODEL

W. H. Todd and Chas. Ward

Stouffville, Ontario.

ALSO WAGONS, BUGGIES, HARNESS, ETC., ON HAND.



Now Is The Time To Paint

If you have delayed painting, your property has suffered. Do not put off any longer. *Save the surface and you save all.* Look around and you will find many places, both inside and out that call for a coat of paint. Now is the time. Nature is re-decorating, get in line and do the same. The most economical method is to use

Guarantee

We guarantee the Martin-Senour 100% Pure Paint (except inside White and a few dark shades that cannot be prepared from lead and zinc), to be made from pure white lead, pure oxide of zinc, with coloring matter in proportionate quantities necessary to make their respective shades and tints, with pure linseed oil and turpentine dryer, and to be entirely FREE from water, benzine, whitening and other adulterations, and SOLD SUBJECT TO CHEMICAL ANALYSIS.

MARTIN-SENOUR
 100% PURE
PAINT AND VARNISHES

Their covering power and lasting qualities are very great. It will pay you to insist on getting this popular brand. For whatever painting or varnishing you do, there is a special MARTIN-SENOUR Product, each one guaranteed to best serve the purpose for which it is made

Consult us as to your requirements. We have a full stock and complete information as to decorative schemes. Let us advise you.

SILVESTER BROS.
 Stouffville Ont



"Save the surface and you save all" Paint & Varnish

The Week's Markets

TORONTO
 Manitoba wheat—No. 1 Northern, \$1.24
 Manitoba, oats—Nominal.
 Manitoba, barley—Nominal.
 All the above track, bay ports.
 Am. corn—No. 3 yellow, \$1; No. 2, 99½c.
 Barley—Malting, 59 to 61c, according to freights outside.

Buckwheat—No. 2, 76 to 78c.
 Rye—No. 2, 79 to 81c.
 Peas—No. 2, \$1.45 to \$1.50.
 Millfeed—Del. Montreal freights, bags included: Bran, per ton, \$29; shorts, per ton, \$31; middlings, \$35; good feed flour, \$2.15 to \$2.25.
 Ontario wheat—No. 2 white, nominal.
 Ontario No. 2 white oats—50 to 52c.
 Ontario corn—Nominal.
 Ontario flour—Ninety per cent. pat. in jute bags, Montreal, prompt ship-

ment, \$5.10 to \$5.20; Toronto basis, \$5.05 to \$5.15; bulk, seaboard, \$4.95 to \$5.
 Manitoba flour—1st pats., in cotton sacks, \$7.10 per bbl.; 2nd pats., \$6.60.
 Hay—Extra No. 2, per ton, track, Toronto, \$14; mixed, \$12 to \$13.50; clover, \$8.
 Straw—Car lots, per ton, track, Toronto, \$9.
 Cheese—New, large, 20c; twins, 22c; triplets, 23c; Stilltons, 22 to 23c. Old, large, 30c; twins, 32; Stilltons, 32c.
 Butter—Finest creamery prints, 35 to 36c; ordinary creamery prints, 33 to 34c; dairy, 24 to 25c; cooking, 22c.
 Eggs, new laid, loose, 32c; new laid, in cartons, 36c.
 Live poultry—Chickens, milk-fed, over 5 lbs., 25c; do, 4 to 5 lbs., 22c; do, 2 to 4 lbs., 20c; hens, over 5 lbs., 28c; do, 4 to 5 lbs., 26c; do, 3 to 4 lbs., 22c; roosters, 17c; ducklings, over 5 lbs., 30c; do, 4 to 5 lbs., 28c; turkeys, young, 10 lbs. and up, 25c.
 Dressed poultry—Chickens, milk-fed, over 5 lbs., 35c; do, 4 to 5 lbs., 30c; do, 2 to 4 lbs., 25c; hens, over 5 lbs., 30c; do, 4 to 5 lbs., 28c; do, 3 to 4 lbs., 24c; roosters, 24c; ducklings, over 5 lbs., 30c; do, 4 to 5 lbs., 29c; turkeys, young, 10 lbs. and up, 30c.
 Beans—Canadian, hand-picked, lb., 7c; primes, 6½c.
 Maple products—Syrup, per imp. gal., \$2.50; per 5-gal. tin, \$2.40; per gal. Maple sugar, lb., 22c.
 Honey—60-lb. tins, 10½ to 11c per lb.; 3-2½-lb. tins, 11 to 12½c per lb.; Ontario comb honey, per doz., No. 1, \$4.50 to \$5; No. 2, \$3.75 to \$4.25.
 Potatoes, Ontario—No. 1, \$1.15 to \$1.25; No. 2, \$1.10 to \$1.15.
 Smoked meats—Hams, med., 25 to 27c; cooked hams, 36 to 40c; smoked rolls, 26 to 28c; cottage rolls, 28 to

30c; breakfast bacon, 30 to 35c; special brand breakfast bacon, 35 to 38c; backs, boneless, 34 to 40c.
 Cured meats—Long clear bacon, 60 to 70 lbs., \$18.50; 70 to 90 lbs., \$18; 90 lbs. and up, \$17; lightweight rolls, in barrels, \$35.50; heavyweight rolls, \$32.50.
 Lard—Pure tierces, 16 to 16½c; tubs, 16½ to 17c; pails, 17 to 17½c; prints, 18½c. Shortening tierces, 14½ to 15½c; tubs, 15½ to 16½c; pails, 15½ to 16½c; prints, 17½ to 17¾c.
 Heavy beef steers, \$7.50 to \$8.25; butcher steers, choice, \$7 to \$7.50; do, good, \$6 to \$6.50; do, med., \$5.50 to \$6; do, com., \$5 to \$5.50; butcher heifers, choice, \$6.50 to \$7; do, med., \$5.50 to \$6; do, com., \$5 to \$5.50; butcher cows, choice, \$5 to \$6; do, med., \$4 to \$5; canners and cutters, \$1.50 to \$2; butcher bulls, good, \$4.50 to \$5; do, com., \$3.50 to \$4; feeding steers, good, \$6.50 to 7.50; do, fair, \$6 to \$6.50; stockers, good, \$5.50 to \$6; do, fair, \$5 to \$5.50; milkers—springers, choice, \$8 to \$11; calves, choice, \$10 to \$11; do, med., \$8 to \$10; do, com., \$5 to \$7.50; lambs, choice, \$13 to \$15.25; do, com., \$7.50 to \$12; lambs, spring, each, \$10 to \$12.50; sheep, choice, light, \$7.50 to \$8.50; do, choice, heavy, \$6 to \$7; do, culls and bucks, \$4 to \$5.50; hogs, fed and watered, \$11.25 to \$11.50; do, f.o.b., \$10.50 to \$10.75; do, country points, \$10.25 to \$10.50.

MONTREAL

Corn, Am. No. 2 yellow, \$1.01 to \$1.02; Oats, No. 2 CW, 67 to 67½c; No. 3 CW, 62 to 63c; extra No. 1 feed, 60½ to 61c; No. 2 local white, 59½ to 60c. Flour, Manitoba spring wheat pats., firsts, \$7.30; do, seconds, \$6.80; do, strong bakers, \$6.60; do, winter pats., choice, \$6.15. Rolled oats, bag, 90 lbs., \$3.10 to \$3.20; Bran, \$28; Shorts, \$30; Middlings, \$35. Hay, No. 2, per ton, car lots, \$14 to \$15.

Come to
Toronto Motor Car Co.
for Used Ford Cars
SENSATIONAL PRICES!

All these cars have been traded in as part payment on New Fords. We guarantee the title, model and year and protect you against observable defects. Every car guaranteed to be as represented.

The LOWEST PRICES Ever
 Quoted on Used Ford Cars

\$50 CASH DOWN FORD TOURING In Good Condition Balance \$6.50 month	\$54 CASH DOWN FORD ROADSTER Will keep Balance \$8.50 month	\$8 CASH DOWN FORD LIGHT DELIVERY Balance \$12 month
--	---	---

EASY TERMS AS LITTLE AS \$2.00 A WEEK WILL ENABLE YOU TO BUY A FORD THIS YEAR

\$105 CASH DOWN Good-looking FORD COUPE Balance \$17 month	\$129 CASH DOWN Excellent Condition FORD SEDAN Balance \$22 month	\$62 CASH DOWN In Good Shape FORD TOURING Balance \$8.50 month
\$72 CASH DOWN Reliable FORD ROADSTER Balance \$11 month	\$118 CASH DOWN and \$18 a month soon pay for FORD COUPE	FORD TRUCKS \$66 CASH DOWN Terms: \$9 month FORD TON TRUCK
\$24.50 PER MONTH Boys this FORD SEDAN \$150 Cash Down	\$72 CASH DOWN Good-looking Reliable FORD TOURING Balance \$11 month	\$67 CASH DOWN Terms: \$11 month FORD TON TRUCK
\$81 CASH DOWN Terms: \$12 month FORD TON TRUCK	FULL SET OF TOOLS AND DRIVING INSTRUCTION FREE!	

The above easy terms are for twelve monthly payments and include interest and insurance. Substantial extra savings for ALL CASH. While we always have a good stock of used Fords at low prices, now is the time to buy—when we are at the peak of our Spring business.

TORONTO MOTOR CAR COMPANY LIMITED
 "Canada's Largest Ford Dealers"
 52-58 JARVIS ST., TORONTO, PHONE MAIN 361
 JUST NORTH OF KING

Cream Wanted

Ship Cream to us and be independent

Stouffville Creamery Company
 Phone 18602

They Digest It All

A HEALTHY cow likes her food and digests it all if it is properly balanced. She then produces milk to capacity.

Cows eat Schumacher Feed clean because it tastes good. They digest every bit of it because it is perfectly balanced.

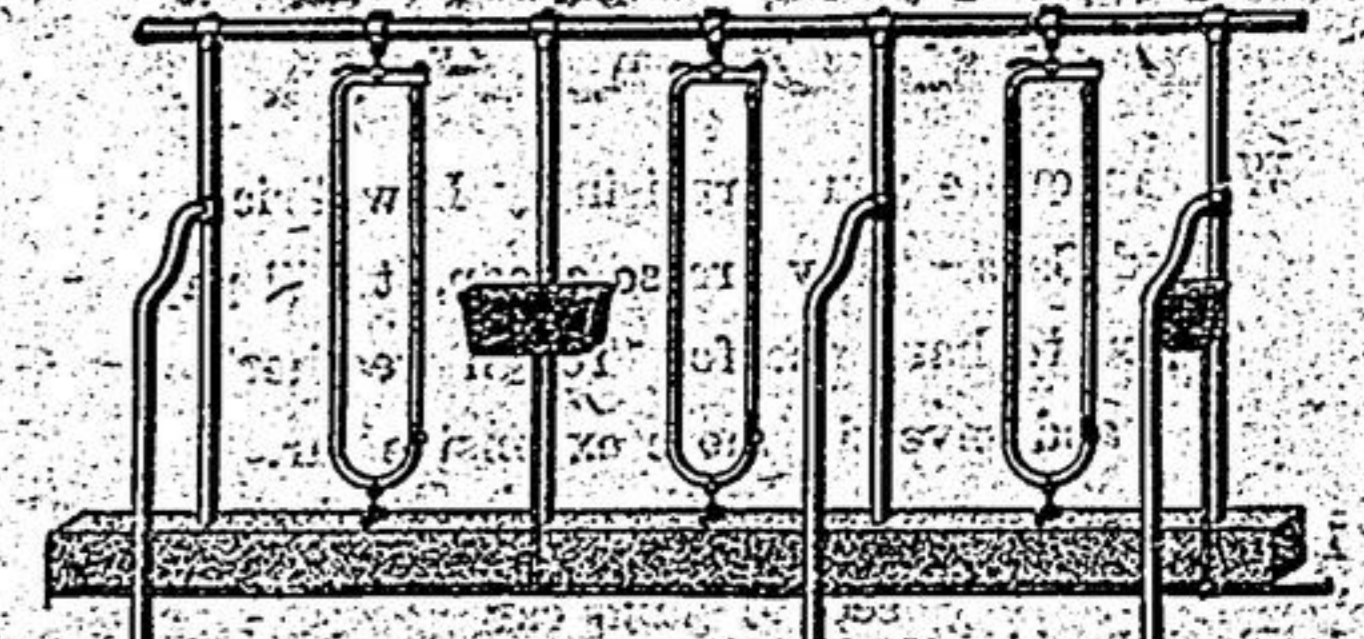
You will find Schumacher more efficient and more economical than a "straight grain" ration. It makes more milk. Beef stock and hogs thrive on it.

Schumacher Feed is manufactured from milled products of Corn, Barley, Wheat, Oats and Linseed Meal, evenly ground, sold in new sacks which carry the Government guaranteed chemical analysis.

SCHUMACHER FEED

STIVER BROS.

TORONTO STABLE EQUIPMENT



Rust-Defying—Because Hot Galvanized

There's one feature in particular you'll appreciate about Toronto Stable Equipment. This is the fact that the "hot galvanizing method" we use thoroughly covers and completely coats both the inside and outside of the steel tubing with pure zinc. This method makes it absolutely rust-defying and proof against strong stable acids for the maximum period—while the method ordinarily used simply applies a surface coating and goes only a short distance inside tubing. Toronto Stable Equipment will make work easier—keep cattle healthier—bring more profits. Let me explain the many advantages of Toronto Stalls, Bull Pens, Water Bowls and Litter Carriers—or get some of the Toronto literature.

N. LANKTREE
 Stouffville Ontario.