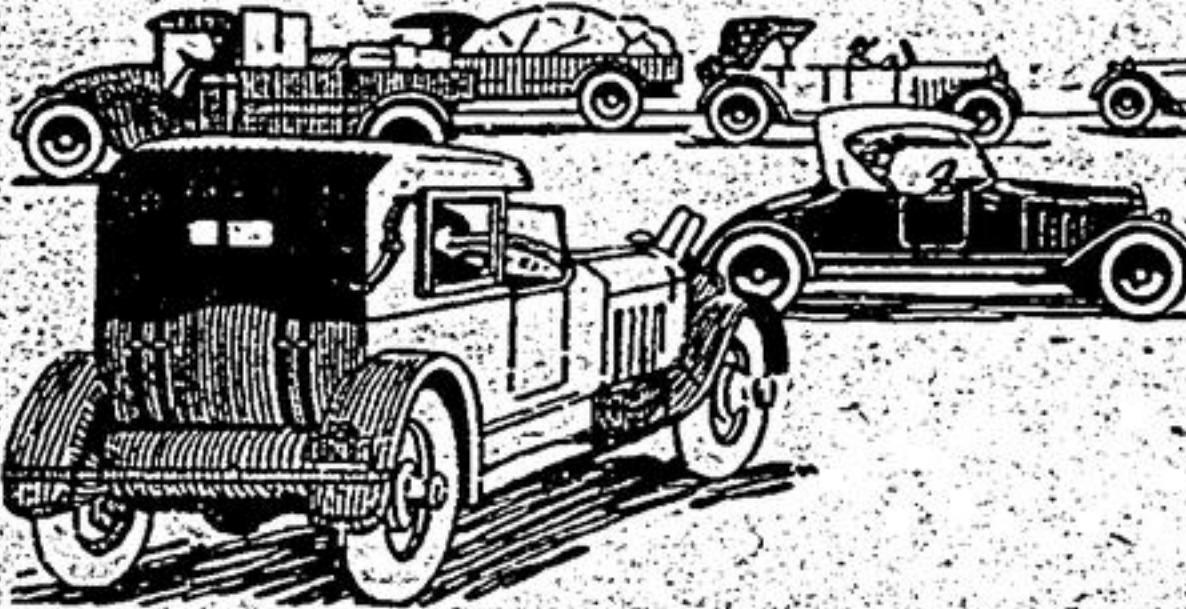


# A Grade for YOUR Car

One of the five grades of Imperial Polarine Motor Oils is exactly suited to your car. Use this grade regularly and get trouble-free service from your car at the lowest possible cost for lubrication. Consult the Chart to determine the grade you should be using.

## IMPERIAL OIL LIMITED

Manufacturers and Marketers of Imperial Polarine Motor Oils and Marketers in Canada of Gargyle Mobiloil.



**FARM FOR SALE**—150 acres, 3 1/2 miles east of Claremont, on the Government Road, 1/2 mile from station, church, school, store and P.O. near Level clay loam soil, 3 acres of orchard, good fences, spring creek crosses farm, large brick house with lawn and fine shade trees, 2 large bank barns, large silo. This must be seen to be appreciated. Price reasonable. Apply to Wm. Edwards, Claremont, Ontario.

### Properties for Sale

4 Acres with lots of Fruit. Lots of houses and barns. Three hen houses. Plenty of buildings.  
 15 Acres, fine land and fair buildings, henhouse and plenty of fruit.  
 50 to 100 Acres. Same has No. 1 buildings. 96 acres to be sold at once. Has the best of crops.  
 One pair of houses at \$3000.00. Rented at good income.  
 Good single houses, \$3500 to \$4000.  
 Call on  
**YAKE & CO., Button's Block**  
 Stouffville, Ont.  
 Business phone 1604  
 Residence phone 8004.

### Whitchurch Tp. Council

Whitchurch Council met at Vandorf Hall, Wednesday, 6th inst., with all members in attendance.  
 The Minutes of previous meeting were read and confirmed.  
 Communications as follows were presented, viz.:—  
 W. H. C. Millard, Clerk of New Toronto, with copy of Resolution passed by the Council of that Municipality, petitioning the County Council to strike tax rate at the session held in February instead of the June session, as at present, and requesting this Council to pass a similar resolution.  
 W. A. McLean, Deputy Minister of Highways, re parking of motor cars on highway at Wilcox Lake on Saturdays and Sundays.  
 MacIntosh and Black, solicitors for R. J. Ritchie, presenting plan for subdivision of part of Lot 67, Con. 1, and requesting approval of same to obtain registration.  
 W. E. Taylor presented a claim for sheep killed and injured by dogs.  
 The Treasurer was instructed to pay the following bills, viz.:—  
 For Gravel  
 John Jackson 291 \$ 58.20  
 Thos. Ayre 34 6.08  
 Jesse Cook 491 98.20  
 Amos Beavers 49 9.80  
 Percy Allin 144 28.80  
 Alfred Beckett 29 5.80  
 Chas. Badgerow 20 3.00

Frank Drury	59	11.80
G. L. Bingham	45	9.00
Mrs. S. A. Cain	30	6.00
Edgar Dennis, for 25 yards gravel and 20 days work in lieu of statute labor between Lots 90 and 91, Con. 1		37.00
Banner Press, advertising re opening T.L.S. and 15 cards (no parking)		16.95
Thornton Bales, 22 1/2 hours un-derbrushing, etc., between Lots 90 and 91		4.50
Wm. Pettit, repairing hall door		3.40
Jesse Lundy, 36 yds. gravel and clay		7.20
John Fisher, 126 yds. gravel		25.20
Pedlar People, Ltd., half price for 2 metal culverts for T. L. S., Markham to pay other half		\$1.08
James Proctor & Reilfern, Engineers' fees 7th Con. bridge		42.50
Garnet Evans, 20 yds. gravel and 3 1/2 day team work in pit		6.50
W. E. Taylor, damages for one sheep killed and one injured by dogs		17.00

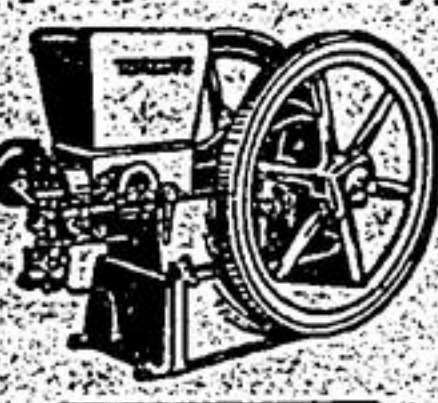
Resolutions were passed:—  
 Appointing Councillor Leary Commissioner to investigate the advisability of obtaining a survey of road at east side of Wilcox Lake and report at next meeting of Council.  
 Approving of sub-division plan presented by Mr. Ritchie and instructing the Reeve and Clerk to sign certificate of same.  
 The Reeve was appointed Commissioner to have side line between Lots 20 and 21 repaired and Fifty Dollars granted to pay for same.  
 A by-law was regularly passed authorizing a further overdraft of Ten Thousand Dollars from the Standard Bank to meet current expenditure on roads and bridges, etc.  
 Council adjourned to meet again at the same place, Wednesday, October 11th, next, at 10 o'clock a.m.

**BAY MARE** for sale. Good worker and quiet. Cheap. Apply P. F. Carter, R.R. 2, Markham. Phone 4612.

**FOR RENT**—Nice warm, 6 roomed house, double windows and doors. Near Ballantrae. Apply to H. Kirby, Ballantrae. Phone 3427.

## You Need a Good Engine

You can't realize the money-saving value of a good farm engine until you've seen how much more quickly and efficiently you can clear up the numerous odd jobs about the farm.  
 For milking, separating, churning.



ing, sawing, grinding, sharpening tools, mixing cement, shelling corn, filling the silo—there's nothing I know of that will give better service with so little attention as a Toronto Engine. And they operate on either kerosene or gasoline.  
 Let me explain in detail these sturdy little workers next time you pass my way. Don't forget to see their able assistants—The Toronto Saw and the Toronto Grain Grinder—at the same time.

A. W. SCOTT, Agent, Stouffville

# Dead Ones Create Business. But only for the Undertaker.

If you were at the Chautauqua Entertainment you heard the Superintendent and Pianist say.  
**The Bell Piano** was one of the best Pianos they used on their entire circuit.



**THE Bell Piano** cost no more than the ordinary piano.  
 We guarantee the Bell Piano to be as good as the best.  
 A Trial always convinces

## IMPORTANT Take a Chance? NO!

Lose your Barn and Crop, and 9 out of 10 farmers are nearly bankrupt for several years. A few dollars spent in good **Lightning Protection** may save you a lot of money and worry.

Do It Now. We Save You Money?

## The Surest Way to Catch the Disease of Good Music is to Expose Yourself to it.

**YOU CAN HAVE THE Best Singers, Bands, Orchestras, Comics, Sacred Songs**



**Think of It,** Hearing in your own home on your own Phonograph. Such men as: Caruso, Henry Burr, Billy Sundry Chorus. Such BANDS as: His Majesty's Life Guards Conways and Sousas. Such ORCHESTRAS—Popular Dance, Philadelphia, etc.

Right in your own Home. There is plenty of Music for live ones.

# GEO. E. BAKER,

Phone 179. Stouffville, Ont.

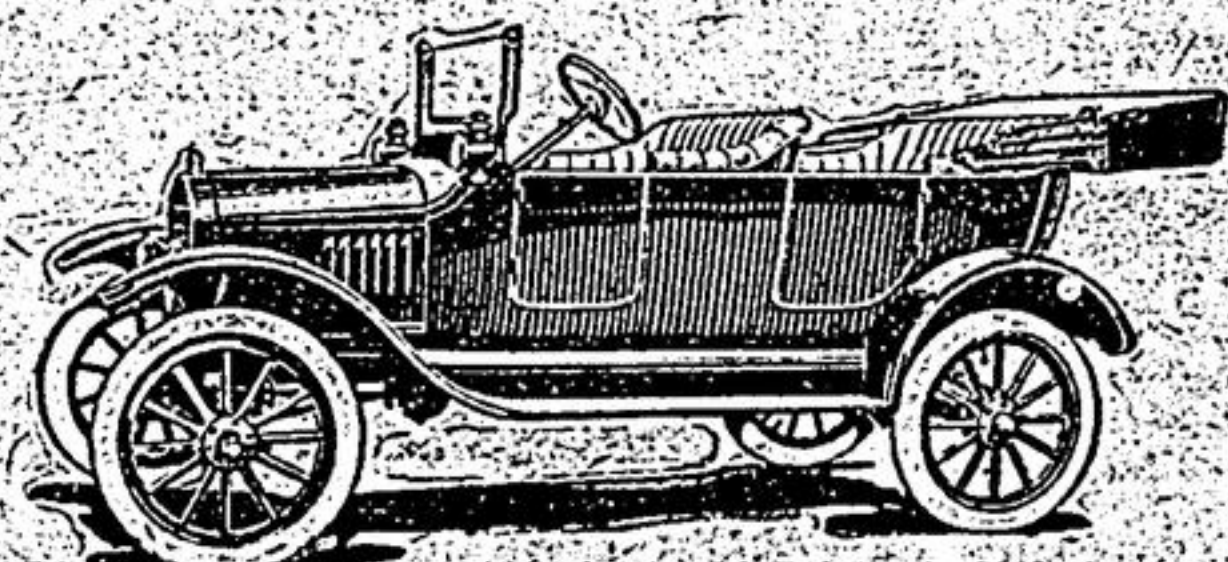


## Now that Harvest Is Assured

buy your new Ford.

It's not necessary to wait till you have the cash.

Take advantage of our Thrift Plan. Pay one-third down and agree to take care of the balance in twelve equal payments—and any model you like is yours.



# R. E. BROWN

FORD DEALER STOUFFVILLE

## "Easy to Drive and Costs Little to Run"



The Overland with its ease of handling, safe brakes and short turning radius appeals particularly to women drivers. In and out of city traffic, parking in limited space, turning in narrow streets, it is surprisingly easy to control. Pedals and levers are conveniently placed. Two separate sets of brakes give positive action at a touch. Out in the country, no matter what kind of road, the Overland is comfortable. Triplex springs absorb the shocks. No back swaying or pitching at corners. It is a light, sturdy, well-balanced car—exceptionally low in operation and upkeep cost. Always a good investment, the Overland at today's price is recognized as the greatest automobile value on the market. If you don't drive, we'll teach you quickly. Let us give you a demonstration ride.

We handle **Overland** We also handle Cutters, Robes and Blankets, etc.  
 NOW SOLD IN **STOUFFVILLE**  
 BY **W. H. TODD & WARD**  
 Willys-Overland Limited, Head Office and Factories: Toronto, Canada