

YOU'LL GET GOOD ENSILAGE



With a **TORONTO Silo**

I HANDLE the Toronto Hip Roof Silo because I want to give my customers the biggest value. You can't have good ensilage unless you have a good silo. And Toronto Silos are good silos. Made of wood—the best non-conductor of heat and cold. Sturdily built from double tongued and grooved staves of selected spruce impregnated with creosote, they give adequate protection against air and frost. Their special Hip Roof provides more space for filling. I can show you where a Toronto Silo will mean more productive cattle, bigger profits, a more valuable farm—dollars in your pocket. Let's talk it over.

A. W. SCOTT, Agent, Stouffville

Gasolene BY Visible Measure

My New Gasolene Pump is now in operation and is making a big hit. It takes all the uncertainty out of buying gasolene. You see your measure before it goes into your tank; Also agent for Prest-O-Lite Storage Batteries, the first cost is slightly higher but they have stood the test of time and are backed by an ironclad guarantee. Your Battery troubles disappear once you install a Presto.

A good line of Tires, Tubes, Spark Plugs, and other Accessories always on hand.

Expert repairs on all makes of cars.

Ringwood Garage

Phone 6005

The NEW OVERLAND

HAS ARRIVED

Just the car you have been waiting for. These new models can be seen at W. H. TODD'S SHOW ROOMS. Drop in and look them over. In these cars you will find everything that is to be desired in a modern priced automobile.

W. H. TODD & CHAS. WARD

ARE AGENTS for these cars and will be pleased to show you all the good qualities built in this sturdy little car. Also handle Conboys and Baynes Buggies, Harness and Robes.

GREEN & LaBARR

Our Auditorium Garage Fix'em Right

AGENTS FOR AUTO ECONOMIZER

Repairs on all Makes of Cars

Phone 170

Chopping

During June, July and August, on Monday, Wednesday and Fridays.

DREWERY Bros. Phone 2805 Dixon Hill

Fresh Choice Groceries

Good things to eat—Bananas, Oranges, Strawberries, Lettuce and Cabbage.

Pastry and Bread Flour

The Best of Canned Goods

DROP IN AND SEE ME

I STILL HANDLE

Dodd & Struthers Lighting Protection, Buggies, Gas Engines, Loudens Litter Carriers, also Burlington Silos, etc.

GEO. J. LAWSON

Stouffville Council

Regular monthly meeting of Stouffville Council, June 5th, 1922. Members all present. Accounts presented and passed.

WATER WORKS

Joel Nendick 33.90
E. Walls 16.00
Barkey Bros. Rep. to Hydrant 3.00
Kerr Engine Works, valves and turnbuckles 28.84

ELECTRIC LIGHT

Ben Burkett, carting 2.43
J. Urquhart, express, freight etc. \$5.62
B and S. Telephone 16.30
British American Oil Coy. 26.24
Hydro Elec. Power com. lamps 18.85
Northern Electric Coy. supplies 69.41

GENERAL ACCOUNTS

Ed. Walls, work on bridge 12.00
Joel Nendick, work on bridge 23.50
Ben Burkett, carting 6.30
Sandy Jones, on roads 13.00
Stouffville fire Brigade, Muston's call 14.00
Municipal World supplies 7.84
Geo. Patton, fire extinguishers 21.25
J. Urquhart, postage and stationery 9.70
Electric Light plant St. Lights and Lamps 259.85

Moved by F. W. Silversides, sec. by A. W. Scott, that the previous council having passed a motion instructing the Clerk to make a list of all persons in arrears for Electric Light service and that he give such list to the superintendent with instruction to disconnect such service that may be so in arrears. We the present council approve of the said resolution and authorize the Clerk to enforce the said resolution.

Whitchurch Council

Pursuant to adjournment Whitchurch Township Council met at Vandorf Hall, Wednesday, 10 a.m. May 31st, with all members present except Councillor Dennis, and organized as Court of Revision of Assessment Roll for 1922.

Reeve Crawford in the chair.
J. B. Grose, appealed against assessment of \$1000 for South Half of East quarter of lot 31, con. 8; reduced by Court to \$800.

D. H. Rusnell appealed against assessment of \$5400, west half (.95 acre) lot 2, con. 9, dismissed.

J. D. Greenwood appealed against the following assessments:
Con. 5, west quarter lot 27, 40 acres, \$3500.
Con. 4, east half lot 27, 100 acres \$4200.

Con. 4, West half lot 26; 100 acres \$5525.

Con. 6, east pt lot 21, 5 acres \$25. Appeals dismissed.

Assessment of dogs to the following named persons was ordered from the roll, viz.

Herbert Hopkins removed from the Township.

W. W. Lazenby, Jarvis Storry, D. O'Leary and Edward Allen, dogs destroyed &c.

W. Chapman, appealed to have H. S. Ground assessed as Tenant of Con. 3, west half lot 26, Allowed.

J. A. Clarke appealed to have Geo. Foster assessed as Tenant of East half lot 11, con. 5, in lieu of H. Hopkins. Allowed.

F. Graham, appealed to have A. Finney assessed for N-W. quarter lot 25, con. 3, Appeal allowed.

J. Atkinson appealed to have J. B. Brillinger assessed as owner of West quarter lot 11, con. 5, and himself assessed as Owner of East Half of west half of same lot with J. N. Nelson as Tenant. Allowed.

Assessment as amended was adopted and finally revised and Court adjourned sine die.

In Council, the minutes of last meeting were read and confirmed.

A communication from J. A. Mabley was presented complaining that road fence along property of Mr. Nigh, Lot 7, Con. 2, East, is over the road line and requesting that steps be taken to have the same removed from the road allowance.

Engineer James waited on the Council several tenders for construction of concrete culverts and bridges on Townline South and on 3rd and 7th Concession Lines.

Albert Hoover, presented a petition signed by Six Ratepayers requesting a grant to clay hills on 6th concession line opp. lots 13 to 20.

The Treasurer was instructed to pay the following bills as presented. Peter Steckley, 2 1/2 days operating grader \$6.25
John Carroll, building fence Vandorf Hall lot 12.50

G. L. Bingham, 196 yds. gravel and 4 days shovelling in pit 47.20
G. H. Fisher, for grading tractor and other work 78.50
Banner Press, Letter heads and envelopes 16.00

Harvey Topper, filling washout on T.L.E. 7.50
Sawyer Massey Co., for 2 graders 339.90

Dominion Road Machinery Co., for 2 graders 334.41
Canada Ingot Iron Co., for 11 metal culverts 351.89

A. E. Yake, repairing hill opposite Lot 9, con. 4 22.10
E. Cooney, for blasting powder and 7 loads gravel 4.40

W. H. Clark, for 8 days as Road Overseer in 1921 32.00
Geo. Neale, 15 loads clay for div. 4, con. 6, in 1921 3.00

Resolutions were passed, instructing the Clerk to notify Mr. J. Nigh to remove his fence from the allowance for and in rebuilding; not to place farther out than the road line.

Accepting the Tender of Hector Patterson to road cement Concrete Bridges at Lot 3, Con. 7, and at lot 10, con. 3, and supply all materials for same at and for price of \$3425.

Appointing the Reeve and Councillor Leary a Committee to interview the Executors of the Guilane Estate re widening Road around Wilcox Lake.

Authorizing the remission and removal from Roll of Taxes of 1921 amounting to \$17.47 on Income and other assessments which could not be collected nor yet returned to the County Treasurer for collection.

Instructing the Clerk to notify the various road overseers that when doing their road work they select and recommend to Council the best man in the Division to act as Overseer for a term of not less than three years.

Accepting the offer of W. J. Woodcock to sell for \$100 land for new bridge and straightening road and appointing the Reeve and Councillor Leary Commissioners to carry out the purchase.

Appointing the Reeve and Deputy Reeve, Commissioners re building bridge on 7th con. opp lot 3.

Authorizing grants for road improvement at the places mentioned under supervision of the Commissioners named, viz.

For 9th Con. opp lot 16, Deputy Reeve, commissioner \$75.00

For 9th Con. bet. lots 15 and 16, Councillor Baker, Commissioner \$60.

For 3rd Con. bet. lots 15 and 16, Reeve Commissioner \$50.00

6th Con. opp lots 18 and 19, councillor Baker, Commissioner .. \$40.00

5th Con. opp lot 12, Councillor Baker Commissioner \$40.00

9th con. opp lots 1 and 2, Deputy Reeve Commissioner \$100.00

8th Con. bet. lots 10 and 11, Councillor Baker Com. \$50.00

2nd Con. opp lot 20, Reeve Commissioner \$100.00

T. L. S. bet con. lines 5 and 6, provided Markham Twp. grant a like amount, Councillor Leary, Commissioner \$100.00

2nd con. bet. lots 5 and 6, Councillor Leary Commissioner .. \$75.00

By-Laws were passed:
Authorizing the opening and grading of the Whitchurch Markham Townline in Concessions 1 and 2 in conjunction with the Council of Markham-Township.

Appointing W. H. Clark Township Road Overseer for the year 1922.

Appropriating certain sums for the construction of Roads and Bridges on Townlines and Township rds., during the year in compliance with the Regulations of the Provincial Department of Public Highways.

The Clerk was instructed to order 6 metal culverts from the Canada Ingot Iron Co.

Council adjourned to meet again at same place Wednesday June 23rd, at 10 o'clock a.m.

CARD OF THANKS

Church of Christ wishes to thank the Friends of Stouffville and Vicinity who loaned dishes and opened their homes and offered assistance in so many ways to visitors attending the meetings held in Ratcliff's Hall on Sunday last.

ARE YOU A SUBSCRIBER?

If you are not a Subscriber, we would like you to be. If you are a Subscriber, we want you to recommend our paper to your friends. We will try to publish a newsy, breezy paper. You can help in many ways. If you have any items of interest at any time, we will be pleased to have you send them to us. Make it your paper. Help to make it interesting. Call into the office and talk the matter over. We want to meet you.

THE STOUFFVILLE TRIBUNE

Telephone 1004

Stouffville, Ont.

Swift Bros.

ARE YOU HAVING TROUBLE WITH YOUR CAR? IF SO CALL ON US. WE ARE LOCATED IN W. H. TODD'S CARRIAGE SHOP

Expert Auto Repairs and Machine Shop Work our Speciality

Maxwell and Dodge Service

WE ARE IN A POSITION TO STORE A FEW CARS. CALL IN AND SEE US. WE DO ALL REPAIRS ON ALL MAKES OF CARS. AT REASONABLE RATES. OUR CUSTOMERS VOUCH FOR THE SATISFACTION WE ARE GIVING.

Phone 3005, Stouffville

BOOTS

I have received an extra good line of Men's Oxford, real good stock and a cheap price. A real good stock of Men's Fine Boots in all shapes and sizes and real cheap too. A nice lot Men's Working boots. Now Don't Forget that I handle Harness. Come in and look over these lines. Store open evenings.

Abram Brown

Phone 177

STOUFFVILLE

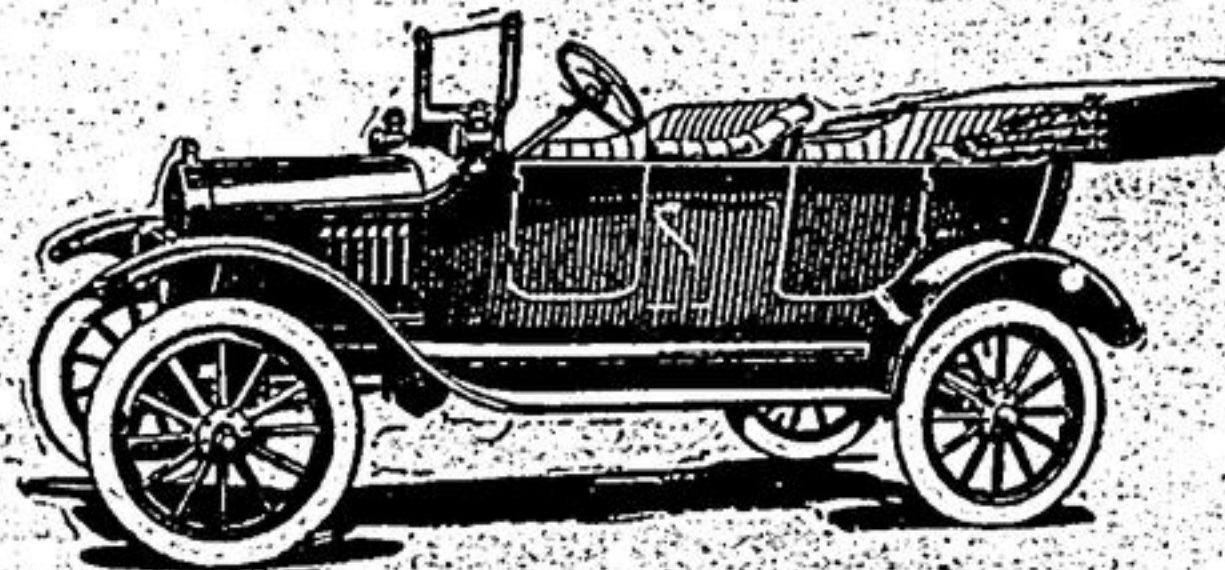


"Let's Go"

NO SOONER said than done when you own a Ford. It may be a drive into the country, or it may be a trip to town. It may be to hear a sermon or to see a famous "movie." It may be to visit the old folks, or to see your young folks. But no matter where it is or what the object the Ford will get you there and bring you back.

We are in a position to make immediate delivery of any model—easy terms if you wish.

Chassis	\$445
Runabout	\$515
Touring	\$535
Coupe	\$840
Sedan	\$930



Starting and Electric Lighting on Chassis and Open Models \$85 extra. Standard Equipment on Closed Models. All Prices F. O. B. Ford, Ontario.

R. E. BROWN

FORD DEALER

STOUFFVILLE