

### Illini Have Busy Season of Sports Events in Offing

That football after all is only one of many intercollegiate sport activities is shown by the University of Illinois schedules for 1929 which will list nearly 100 contests for varsity teams and this total will be augmented by reserve team engagements.

Illinois' indoor relay carnival, March 16, will be the climax in indoor track. The wrestlers, Big Ten champions, will meet Missouri at Columbia. The Big Ten gym and fencing meet will be held at Illinois.

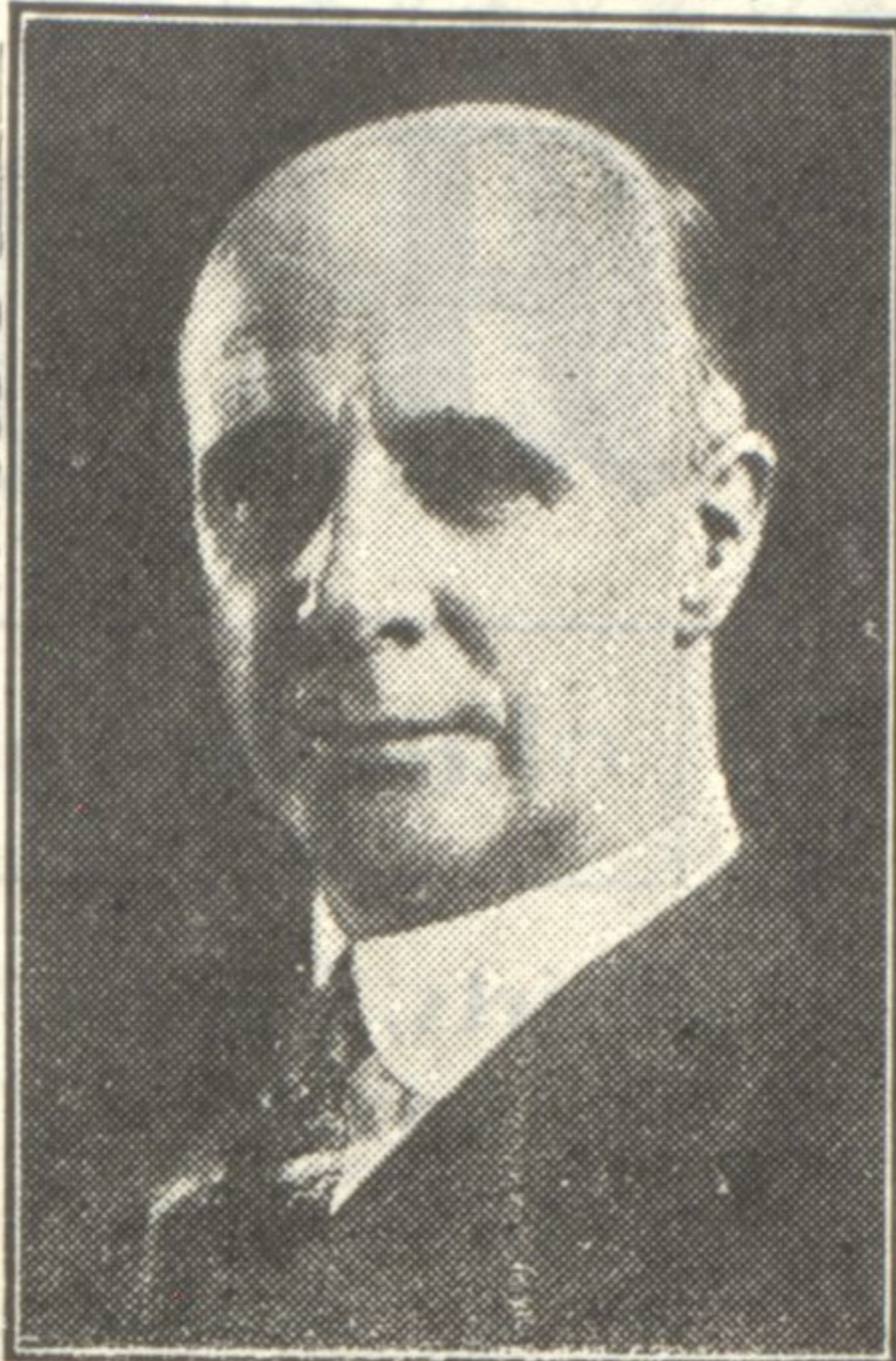
The golf and tennis schedules have not been arranged. The baseball card will include games with two Japanese teams, Meiji university and Osaka Mainichi, both of which Illinois met on its jaunt to Japan last summer, and the Illini will be anxious to return the hospitality of their eastern hosts. Mississippi A. and M. will also be included on the home game list.

The baseball team will make its southern trip during the Easter vacation as usual but the schedule is not completed.

Ohio State and Notre Dame in baseball and Michigan in track will be attractions for the annual interscholastic meet, May 17 and 18.

A company that is the world's largest producer of common brick has its headquarters in Chicago.

### Comes to North Shore



Donald McMillan, famous Arctic explorer, will address the students of New Trier High school at an assembly Thursday, January 10. This will be a return engagement for Mr. McMillan at New Trier. He appeared there in 1926. He is also scheduled to speak before the Sunday Afternoon club in Evanston and the Wilmette Sunday Evening club the Sunday following his

visit to New Trier. Mr. McMillan has lived in the Arctic region for two years and will bring with him motion pictures and stereoptican slides illustrating his adventures. Adults have been invited to the lecture. They will be charged a small admission fee.

#### PRE-XMAS MOVIES

A free pre-Christmas entertainment consisting of five moving pictures will be given for children at the James Simpson Theater of Field Museum of Natural History, Saturday morning, December 22. Four of the films are of the series, "Children of Many Lands," and include the following: "Little Indian Weaver," "Wee Scotch Piper," "Little Swiss Wood Carver," and "Little Dutch Tulip Girl." The fifth film on the program is entitled "Bre'r Rabbit and His Pals." The program is presented under the provisions of the Raymond Fund and children from all parts of Chicago and suburbs are invited by Stephen C. Simms, director of the museum.

Miss Loretta Janette, 315 Abbottsford road, entertained at a supper dance in honor of Miss Charlotte Picher, Tuesday at the Petrushka club, Chicago.

Philip and David Burnham returned Wednesday from Princeton.

**Lord's**  
INCORPORATED  
FOUNTAIN SQUARE · EVANSTON

GREENLEAF 7000  
WILMETTE 3700  
WINNETKA 520  
ROGERS PARK 1122



The  
**NEW**  
Smaller  
**Conover**  
is only  
**\$94.25**

How fortunate to have it come right at Christmas time—when all you have to do is to telephone, and we'll deliver it, all holly-wrapped, on December 24th.

It washes 31 dishes and 24 pieces of silver at one time—a service for four people. A separate rack for pots and pans included.

Lovely mottled lightgreen at top and bottom, shading to white in the middle.

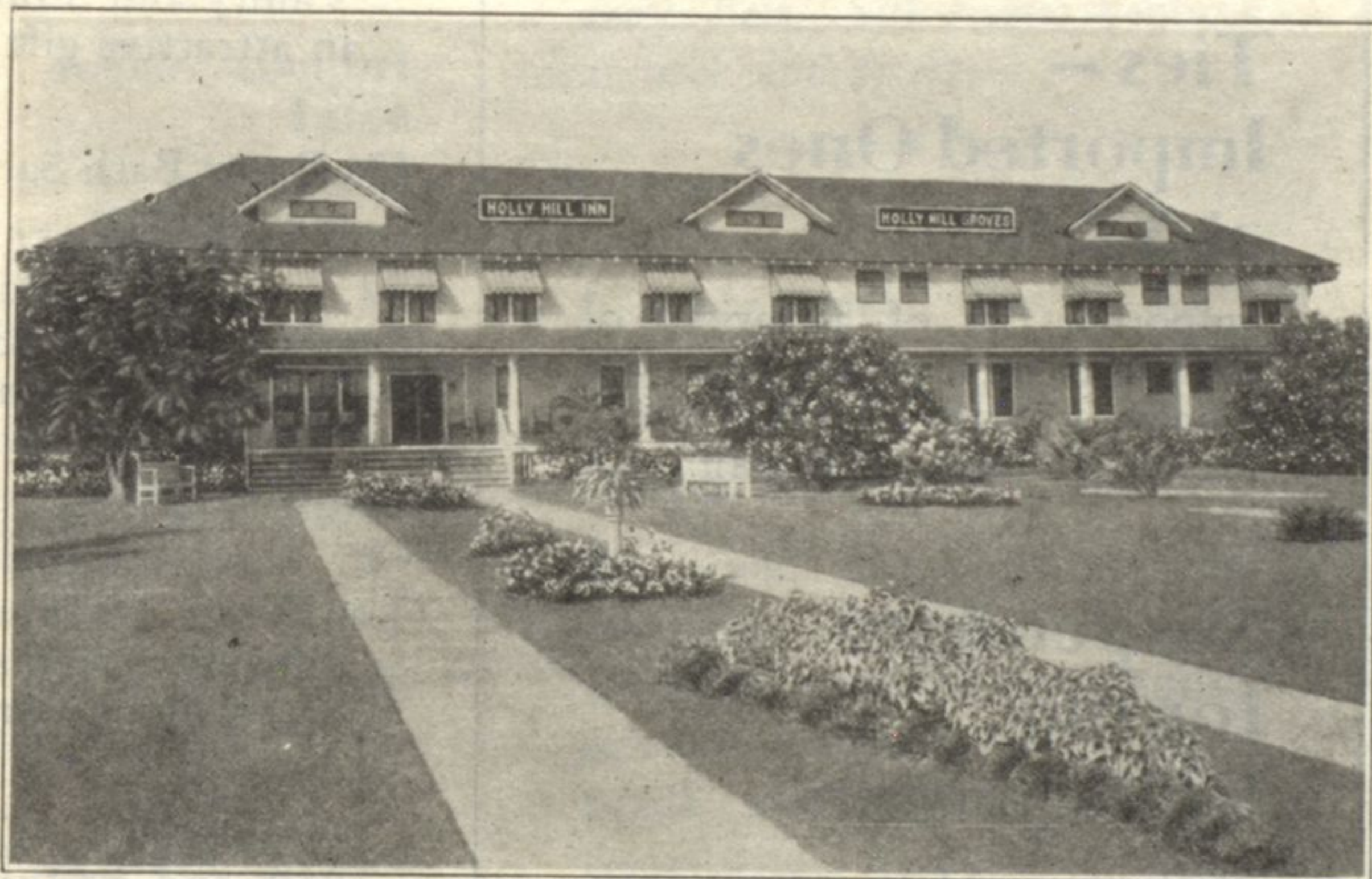
Buy on the Deferred Payment Plan if you wish.

Lord's—First Floor

## HOLLY HILL INN

### DAVENPORT, FLORIDA

HEALTH, REST AND GOOD GOLF IN WARM SUNSHINE



WHERE MANY NORTH SHORE PEOPLE ENJOY THE WINTER

American Plan, moderate rates. Fresh Florida fruits and vegetables. Sun-lighted, airy, outside rooms. Homey atmosphere.

Beautiful, sporty 18-hole golf course, with wide, heavily turfed fairways and large grass greens and tees. Fishing and other outdoor sports.

In South-Central Florida. Paved highways.  
Dixie Highway. Main line Atlantic Coast  
Line R. R. 1½ days from Chicago.

Booklet and rates on request.

**Lord's**  
INCORPORATED  
FOUNTAIN SQUARE · EVANSTON

Dancing  
Slippers  
For the Holidays



Smartly Styled  
Crepe de Chine

Pumps and strap slippers with smart lines and graceful heels. Crepe de Chine comes in oyster white, to be tinted the exact shade of your gown, or worn with white.

New Cushman  
Fashion Models

Lord's—Main Floor

