

Woman's University Club to Move Into Its New Home Soon

With the dream and plans for which they have, as they themselves express it, "fought, bled and died so many times" at last come true in the delight and beauty of their new club home, Evanston workers with the Woman's University Club of Chicago are re-joining in the prospect of its installation early in the new year in its new permanent quarters in the Medical and Dental Arts building, 185 North Wash-ash avenue.

Miss Eleanor L. Hall is one of the well known north shore women who have devoted zealous and patient effort in the club's interests since its formation a number of month ago. She is a member of the house committee which has been busy for many weeks supervising the choice and placing of the furnishings and decoration. Mrs. L. A. Corboy has served as chairman of the house committee, assisted by Miss Marion E. Clark, a member of the home economics department of the University of Chicago, an expert in the art of interior decorating, and the other members of the committee are Mrs. John T. Wheeler, Mrs. Merle B. Snyder, Mrs. Henry Holsman, Mrs. Merle B. Waltz, and the Misses Mildred Whitcomb and R. Louise Hanna.

Miss Hall describes the appearance of the club rooms, which occupy the whole seventeenth floor of the building, as follows:

"The spacious lounge, commanding a view of the river to the west, has walls of ivory tint, the windows hung with curtains of rich, rust colored brocade blending with the rose taupe of the rugs. The keynote of the room

is the beautiful fireplace, the mantel of Tudor design, surmounted by the club's crest in high relief. The dining room, with curtains of colorful cretonne, looks out over the lake. The furniture in both rooms is modern in style."

"Luncheon, afternoon tea and dinner will be served daily except Sunday, when a special supper will be available. In addition, card rooms, committee rooms, a lecture room and a rest room are provided for the comfort and entertainment of the members and their guests."

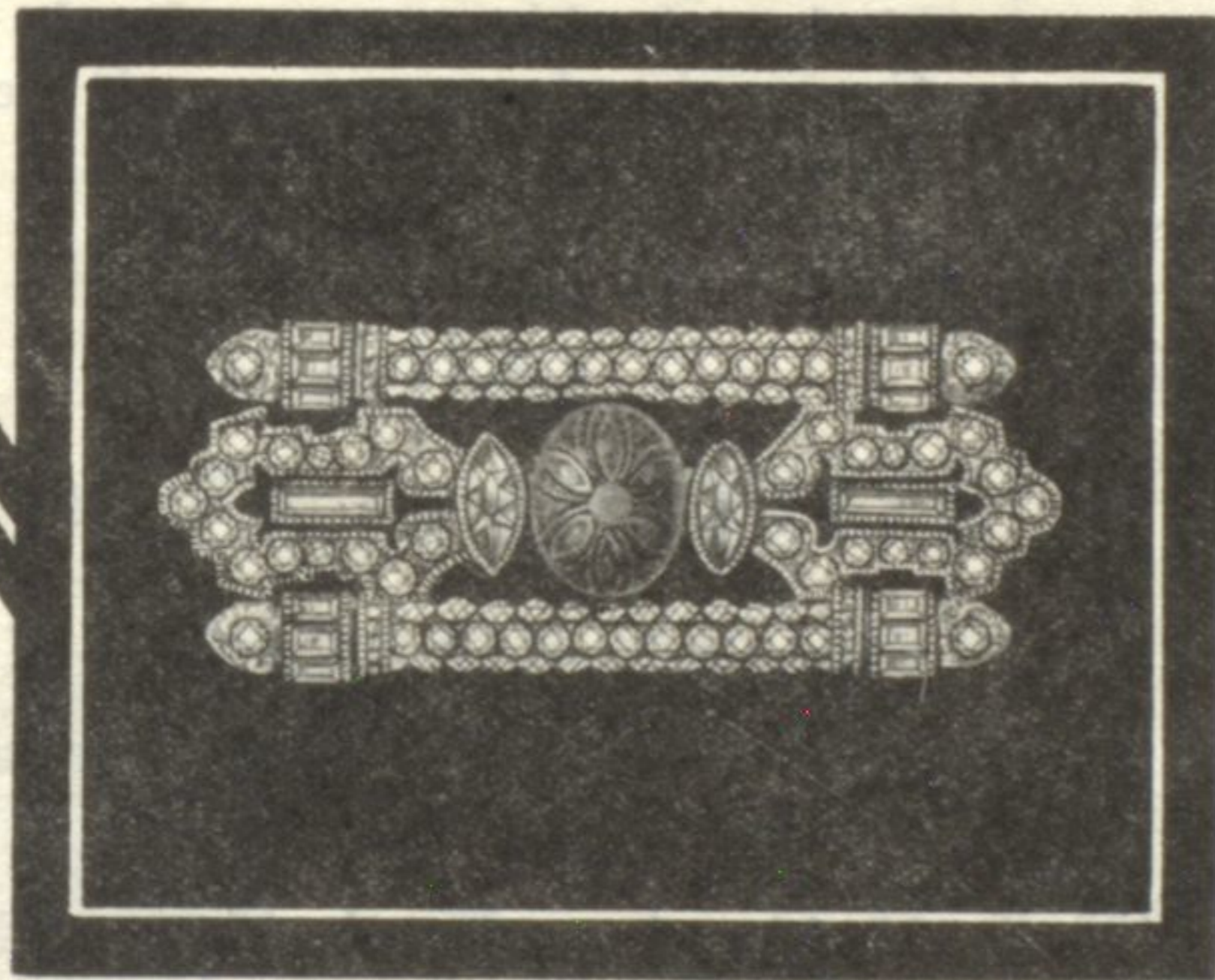
The club was founded in May, 1926, in response to the demand for a club home for college women in the loop. The first president was Mrs. Annie Peaks Kenny of Wellesley, who resigned in 1927. In September, 1927, Mrs. May Wood-Simons of Evanston became president, and under her leadership the club has become firmly established in the life of the city. Mrs. Simons is a member of the faculty of Northwestern university, in the department of economics, and a recognized leader in civic and club life, active in the Woman's City club and the Evanston Woman's club, and a former member of the Chicago College club.

CHRISTIAN SCIENCE SERVICE

"God the Preserver of Man" will be the subject of the services at the First Church of Christ, Scientist, in Winnetka, Sunday morning, December 16, at 11 o'clock. Sunday school convenes at 9:45 o'clock.

McLean county, with 24,250 head valued at \$2,012,800, leads Illinois counties in the number and value of horses on farms. Iroquois county is second and LaSalle third.

JEWELS COMPLETE THE COSTUME



This new short brooch, hand wrought and finest platinum set with carved emeralds, round and baguette diamonds. It is a most versatile piece of jewelry, being worn on the shoulder, at the girdle, on the hat or as a pendant.

Hipp & Coburn Co.

Jewelers and Silversmiths

WRIGLEY BUILDING

Chicago

TELEPHONE SUPERIOR 0673

Royal's Smashing SALE

~~\$36.50~~ 12 1/2% off

\$31.94



THE ROYAL TAILORS INC.

IN 10,000 CITIES

TRADE MARK REGISTERED

You Must Get Here Early

The values are so self-evident that the choicest suits will be snapped up quick. You know what ROYAL has to offer in its line of Super Fine Clothes—come in early and get them less the 12½ per cent. It's

Your Big Chance for Real Saving—

We MUST clean up our stock
We MUST keep our tailors busy—we WON'T lay them off

This means sacrifice—but not to you. To you it means decided advantage. At the regular price, \$36.50, ROYAL'S Super Fine Tailoring is remarkably low—at the Smashing Sale Cut of \$31.94 it's literally the chance of a lifetime.

AFTER YOU'VE BOUGHT A SUIT—
Look at Our Regular \$25 and \$30
Line of Fine and Extra Fine Fabrics

THE ROYAL TAILORS INC.

1641 Orrington Avenue

Open Tuesday, Thursday and Saturday Evenings