

### Fifteen Big Plants Pushing Production of Chevrolet "Six"

Fifteen huge Chevrolet plants cross the country are pushing production with all the speed possible within the limits of precision manufacturing in order to supply dealers with the new Chevrolet Six as quickly as possible for delivery starting Jan. 1, according to Fred Richardson, Winnetka Chevrolet dealer. The December production scheduled has been stepped up to the highest on record for the month.

Record crowds, it is reported, have viewed the new line of Chevrolet six cylinder valve-in-head cars at the national premiers in New York and Detroit. Visitors express admiration of the smart new colors that will distinguish the new Chevrolet from all others, and the new 46 horse power motor with its non-detonating high compression head.

Despite the fact that only two cities have seen the new cars, orders in volume are pouring into the Chevrolet offices from every section of the country.

### New Auto-Theft Device Is Invented by a German

A new anti-theft device providing for setting license plates of a car in a horizontal position when the car is parked and lock has been invented by a German automotive engineer, according to a bulletin issued by the Chicago Motor Club. The department of commerce has issued a paper explaining the device, which is operated by a key in conjunction with a spring controlling the vertical and horizontal positions of the plates. The theory is that if a thief should succeed in driving the car, the horizontal position of the plates would indicate to police and others that the car was being stolen.



Some time when you are over our way, come in and see our "layout" of special equipment for the repair and maintenance of Ford cars. Then you'll understand why "Skokie does it better."

## SKOKIE MOTOR CO.

435 Main St. Wil. 955

AUTHORIZED



SERVICE

### New Flying Cloud by Reo Soon to Make Appearance

The Reo Motor Car company announces the advent of a new Flying Cloud, a smaller brother of the popular Reo model.

The new Flying Cloud has a six-cylinder engine with a bore and stroke of 3 3/8 by 4, developing 60 horse power at 2,500 revolutions per minute. The L-type engine has a high compression head with a compression ratio of 5.5 to 1. The piston displacement is 214.7 cubic inches, which compares with 268.3 cubic inches for its bigger brother, the senior Flying Cloud. The wheel base of the new model is 115 inches, against 121 for the larger car.

An important innovation is the use of a fuel pump and strainer supplying gas to the carburetor under correct pressure of engine speed and load and regardless of conditions.

### New Body Factory of Graham-Paige to Start January 15

That Graham-Paige is looking forward optimistically to 1929 is evidenced by a report that the new body-building plant of the corporation at Evansville, Ind. will probably begin production as early as Jan. 15, according to Carl Hanson, of Hanson Motors, Winnetka, Graham-Paige dealer.

"This report indicates our company is looking for a record year in 1929," said Mr. Hanson.

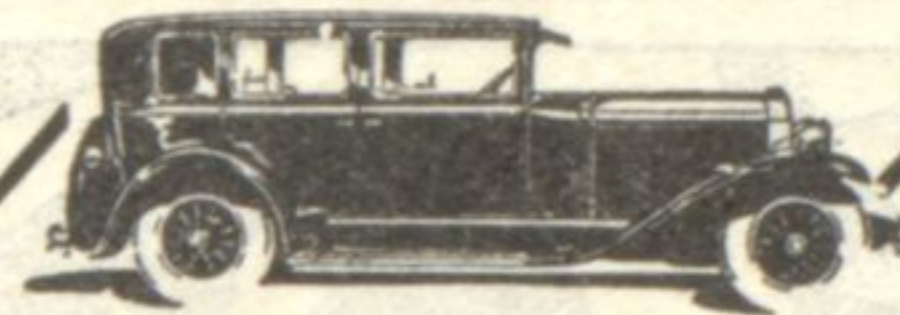
"I am informed that several installations remain to be completed at the new plant. A powerful blower system, equipped with two cyclone fans to carry off wood refuse to the boiler house, is being constructed. Equipment installations at the boiler house are being rushed to completion for the

### Tire Dealers Are Warned Against "Gyp" Artists

The United States Tire company has found it necessary to issue a warning regarding a new type of gyp which is operating in many localities. This new gyp is frankly crooked, and it is only necessary to bring him into court to end his activities. He carries a wagon load of tires and tears a small section of the paper wrapping to show what appears to be a standard brand. Later the buyer finds that the whole brand is entirely different, a small part of it giving a false impression.

Tire dealers will do well to watch for the arrival of these gentry, and get after them hard with the help of the district attorney.

opening of the Graham-Paige body-building schedule."



SHIFT WITHOUT CLASHING AT ANY SPEED

# Last Year's Improvements Can't Win This Year's Buyer

IN the new Cadillacs, La Salles and Fleetwoods there are 8 fundamental improvements. One of the most important is the Silent Shift Transmission. It makes driving simpler—easier—and safer—in traffic or on the open road. With the Silent Shift Transmission you can shift gears at any speed—without clashing. But there is nothing new to learn, for this transmission is standard design, so improved as to give vital advantages.

We sincerely hope that you will accept our invitation to drive one of these delightful cars. To do so involves no obligation whatever.



CADILLAC MOTOR CAR CO.

Evanston Branch

1810 Ridge Ave., Evanston

The New

# CADILLAC LA SALLE FLEETWOOD