

Watch those Headlights To Keep Out of Trouble

Properly adjusted and legal headlights protect the car owner, pedestrians and other motorists alike, points out the Chicago Motor club. Glaring headlights, caused by being bright or

the lamps bent upward, blind other drivers and pedestrians as well. With the shortening of daylight hours, all motorists will act wisely if they check their lights to make sure they are properly adjusted.

FARM CARS OUTNUMBER FARMS

Farm automobiles in Iowa during 1927 exceeded the number of Iowa farms. Automobiles registered totaled 212,973. Iowa farms totaled 210,108. There were, according to the census taken by the State Department of Agriculture, 2,865 more motor vehicles owned by farmers and used on farms than there were farms.

There were 45,195 tractors, somewhat less than one tractor for every four farms, used by the Iowa farmers. The increase in tractors was 4,583. At the date of the census it showed 76,036 radios used on the farms, which was an increase over the 1926 figures of 10,566.

The BUDDY 'L' Line Quality Toys

For Xmas

The steering gears actually steer; the spindles are drop forgings; the chassis frames are channel steel, the axles high carbon steel. Bodies are 20-gauge sheet steel.

E. B. TAYLOR CO.

HARDWARE

546 Center St. Phone 999

Information for Motor Tourists

Road conditions in Illinois and nearby states as reported by the Chicago Motor Club follow:

ILLINOIS

The County highway department reports that Dempster street is now open from McCormick boulevard to Milwaukee avenue. Part of this has been widened to 40 feet.

Illinois-6—Detour at Westchester; follow marked detour over Pusheck road south to 22nd street thence west to Mannheim road, or Illinois-46, then north to Illinois-6.

River road will be open from Lake street to Des Plaines on or about November 25.

Devon avenue will be open between

Crawford avenue and Lincoln avenue on or about November 20.

The Northwest highway (Illinois 19) will be open from Euclid avenue to Arlington Heights road on or about November 25.

Cicero avenue is opened from 111th street to 123rd street.

Illinois-18—Detour in Naperville; detour is over marked city streets.

Illinois-42—Detour in Lake Forest; follow marked detour over city streets.

Illinois-70—Now paved between Mendota and Rockford with the exception of one mile just out of Compton which is expected to be open to traffic by the end of this month. There is also a small gravel gap at the railroad crossing just north of Mendota where traffic leaves Illinois-2.

INDIANA

Chicago to Indianapolis—Via US-41 to the junction with US-52 and US-52 to Indianapolis. We are officially advised that the detour on US-41 from Ade to Kentland is removed and this route is nearly all paved.

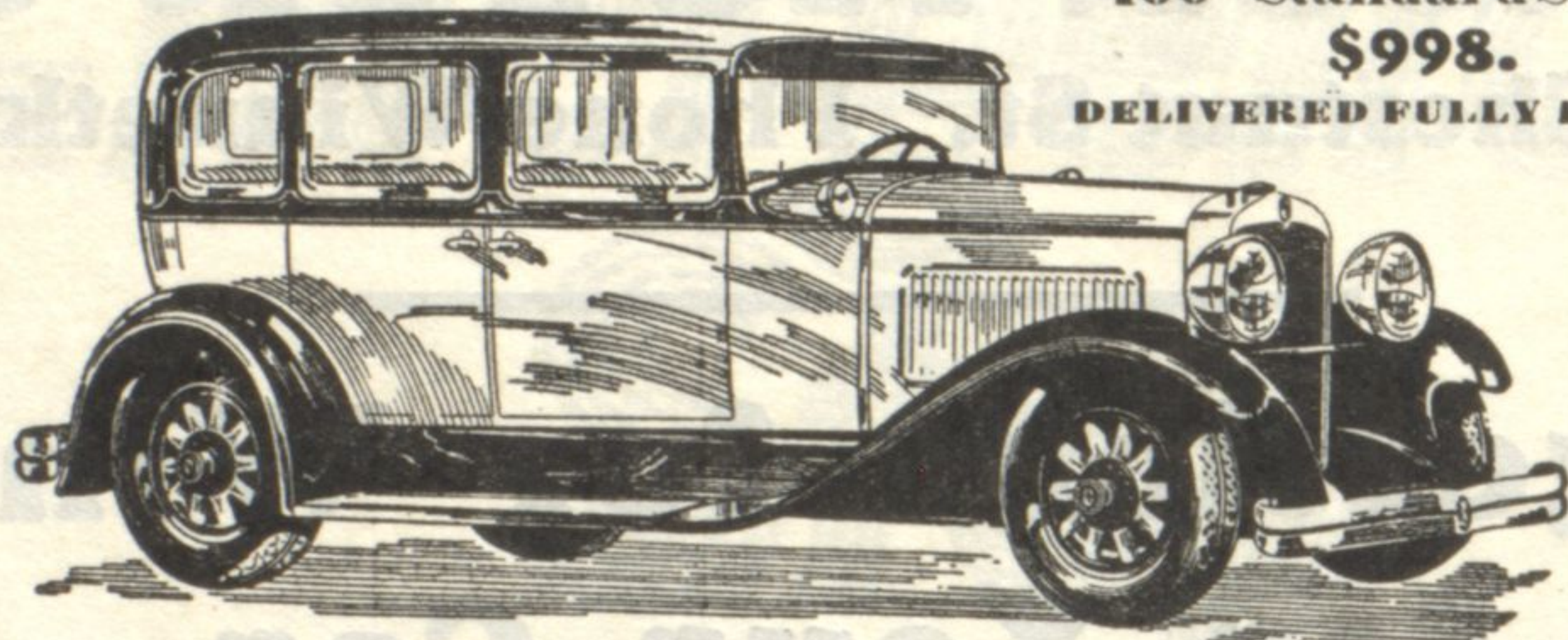
Indiana-45—New Pavement is open between Dale and Huntingburg which eliminates a 2 3/4-mile detour.

Indiana-56—New Pavement is completed and open from French Lick to 2 1/2-miles west.

New Rickshaw Gives Way To Motor Travel in China

Motor transportation is rapidly supplanting old style types of vehicles in all parts of the world. According to commercial reports received by the Chicago Motor club, the rickshaw is giving way to the motor car on the streets of Peking, the first instance in China where native transportation has yielded to modern vehicles.

THE WORLD HAS A NEW AND FINER MOTOR CAR



"400" Standard Six Sedan
\$998.
DELIVERED FULLY EQUIPPED

Nothing more to buy

The Quoted Price Includes Freight
and Complete Equipment

WHEN the Nash salesman quotes you the price on a Nash "400," you will find that it includes not only the car, but the freight, bumpers, hydraulic shock absorbers, everything!

There's nothing more to buy. Nash puts on the extras at the factory, instead of you or the dealer putting them on, at retail prices!

The "400" Standard Six Salon Body 4-door Sedan, illustrated above, will give you an excellent idea of Nash

"400" value. Come in and see it. Take it out and drive it.

The money never bought so fine a motor car before—big—handsome—powered by a new, high-compression, 7-bearing motor—longer wheelbase—new double drop frame—all exposed metalware chrome plated—and a host of other vital improvements. Read them below.

And then remember that the price includes everything—nothing more to buy!

9 Sedans from \$930 to \$2045, delivered—8 Coupes, Cabriolets, Victorias from \$930 to \$1830, delivered

NASH "400"

Leads the World in Motor Car Value

IMPORTANT "400" FEATURES—NO OTHER CAR HAS THEM ALL

- | | | | |
|---|---------------------------------------|--|--|
| High-compression Motor | Aluminum alloy pistons (Invar Struts) | 7-bearing crankshaft (bollow crank pins) | One-piece Salon fenders |
| High Turbulence | New double drop frame | Exterior metalware chrome plated over nickel | Clear vision front pillar posts |
| Lovejoy shock absorbers (exclusive Nash mounting) | Torsional vibration damper | Short turning radius | Nash Special Design front and rear bumpers |
| Salon Bodies | World's easiest steering | Longer wheelbase | |

SUBURBAN NASH SALES

Phone Winnetka 2707 547 Lincoln Avenue WINNETKA



"SLAVE to the coal shovel"

is not a pleasing title. If you want to stop traveling that long, long trail to the basement below, let us tell you how you can do it with the Preferred-Hart Automatic Fuel Oil Burner. It costs but little to own and very little to use.



J. E. Hoffman Co.

Sales and Service
956 Linden Ave., Hubbard Woods
Telephone 2985 Winnetka