

NORTH SHORE MOTOR NEWS



Hupmobile Dealer Says It's Time to Visit Service Man

With winter almost here, the careful motorist is thinking of ways and means for protecting his car against the effects of freezing temperatures.

"Timely precautions, prevent many annoyances, such as hard starting, frozen radiators and other cold weather troubles, nothing of heavy repair bills that may follow neglect of a car in winter," says Gould C. Davis, Winnetka Hupmobile dealer.

"All Hupmobile owners should take their cars to their nearest authorized service station at this season of the year and get the benefit of the skill and knowledge of experts to be found there. Even when an owner plans to make winter provision himself for his car, it is prudent for him to consult the service representatives. There are a large number of accessories on the market which owners may consider purchasing and installing to increase engine efficiency during the winter and a wide variety of choice is offered even in such simple aids as anti-freeze solutions and other winter provisions. Some of these are good. Some are not so good. The Hupmobile service man can give advice on this point.

Production, Sales of Graham-Paige in October Record

New production and shipping records for October were set by the Graham-Paige Motors corporation, raising the total output for ten months of 1928 to 70,406 cars, as compared with 18,800 for the same period of 1927, or a gain of 274 percent, according to Carl Hanson, of Hanson Motors, Winnetka dealer.

Production last month was 52 percent more than the best previous record for October, established in 1926, and was 3.6 times the total for October of last year.

For ten months of 1928, under the Graham management, the factory has averaged 7040 cars monthly production, higher by 1200 cars than the total for the best single month of the predecessor company.

Graham-Paige is to celebrate a big day on Nov. 20 when the \$1,500,000 Graham-Paige Body corporation plant is opened at Evansville, Ind. Civic appreciation of the big industry will be represented by banquets, a parade and a free public dance. All factories will be closed for the day.

Demand for Fords Forces New Record in Steel Industry

An interesting sidelight on the daily increase of Ford production is revealed in a report received by D. G. Leonard of the Skokie Motor company of Main street, Wilmette. The report concerns steel production and shows that in the Youngstown, O., mill section all records were broken in October in cutting inroads into the unfilled tonnages of the producers.

"Stepping up Ford production to meet the demands of purchasers to bring about a reduction in the huge unfilled order list of the company has been responsible in a big measure for the record breaking month in the iron and steel mills," said Mr. Leonard. "The Ford Motor company's require-

Hints for the Winter Drivers

Negligence on the part of car owners is responsible for many automobile thefts. Too many drivers fail to lock their machines, which thus are easy for thieves to drive away. Spare tires should be securely fastened. Bear in mind that there are numerous professional car crooks who always are strolling around in the hope of finding a car that isn't safeguarded.

Thousands of machines are stolen every year and the owners never see them again. Stolen motor vehicles often are involved in accidents. People with cars for which they haven't paid often aren't careful and, in their haste to escape possible detection, will think nothing of endangering other people's lives and property.

The modern automobile motor, in good condition, should start readily, and, in winter, without the use of the choke. Pronounced difficulty in starting is usually a sign of trouble—weak battery, ignition trouble or faulty carburetion.

In cold weather, however, congealed lubricating oil and a cold motor often make starting difficult. It is then that care should be taken in the operation of the starter. The clutch should be released when using the starting motor. When the choke is used it should be returned to its normal position as soon as the motor warms up, to prevent leakage of raw gasoline into the crankcase.

Remember, in cold weather the oil in the motor is sometimes in a chilled or semi-chilled state and wearing surfaces are particularly unprotected for

Motor Car Heating No Longer Problem This Dealer Says

Many people use their cars all winter, but many still drive in discomfort in cold weather because they believe there is no successful car heater on the market, according to J. C. Sloan of Motors Service, Wilmette, who says that the Wahl Universal heater has solved the problem of comfortable Winter driving in any temperature.

"This new heater uses clean, fresh air, drawn in through the radiator, and heated around the car's exhaust pipe," he says. "It develops up to 300 degrees F. but is perfectly controlled to just the heat desired. Moreover, there is an exceptional ventilating system which keeps the air circulating through the car and renews it every three to four minutes.

"Having no actual contact with the gases in the exhaust, there is absolutely no danger of carbon monoxide or other fumes entering the car. Headache, dizziness, lassitude are unknown where the Wahl Universal heats the car, the dealer insists.

Besides being perfectly safe and clean, the Wahl is noiseless. All cars can be fitted."

ments for rolled steel have been pressing for many months and this condition probably will continue.

"That the huge Ford contract with the mills is a huge one is evidenced by the information I have received that the output of nine open hearths of one district sheet producer are required for sheets taken by Ford."

the first dozen or so revolutions of the crank shaft. Do not, therefore, attempt to race the motor when cold. In fact the motor should never be raced when not under load—such practice is extremely unhandl.

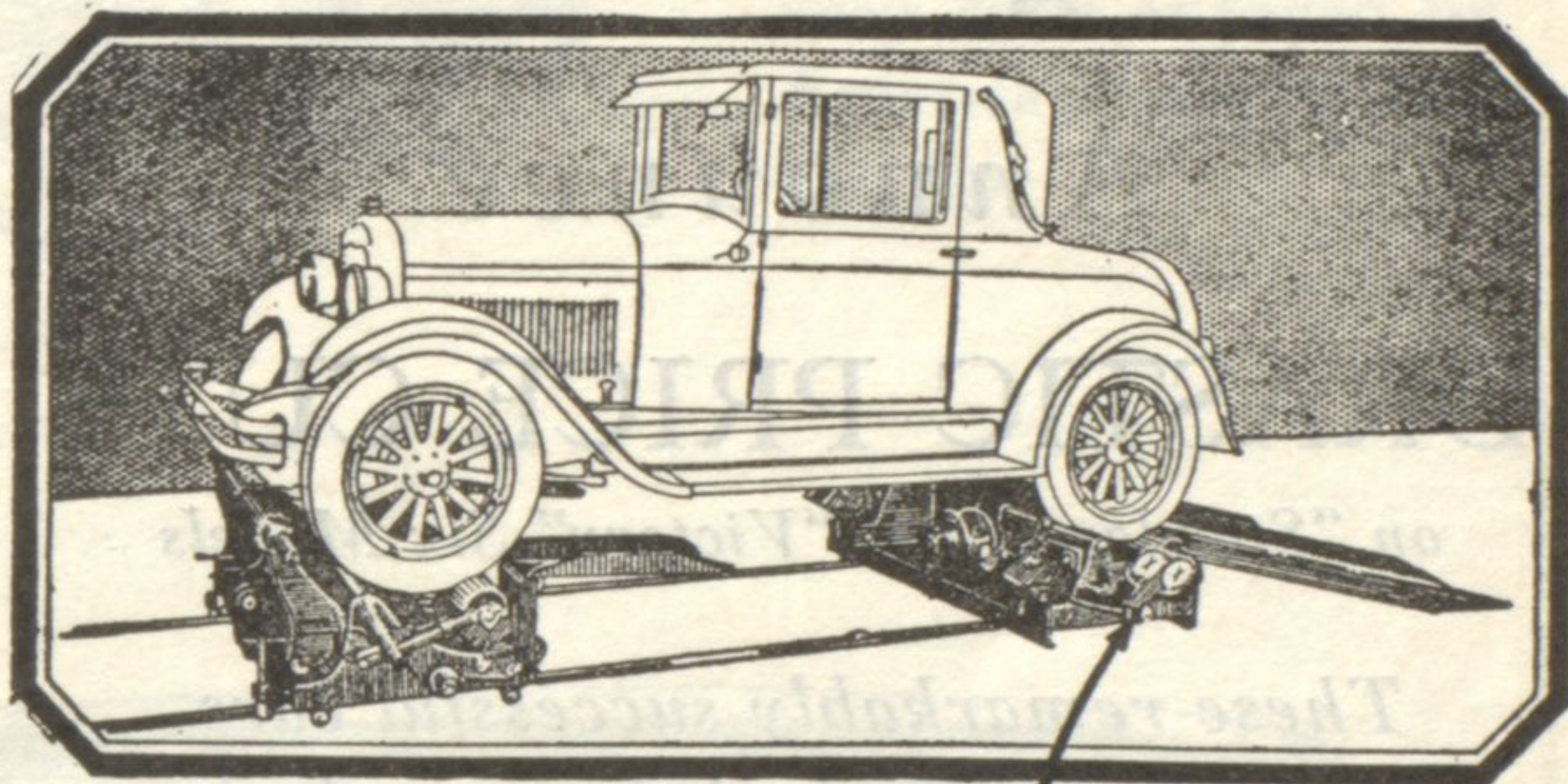
It isn't hard on the eyes ordinarily to look at a pretty girl, but you may get an eye full of shattered glass if you don't keep your attention concentrated on driving when you're behind the wheel. Remember, the one-arm driver continues to figure prominently in auto accidents. Don't try to hold a child in your arms while driving. Control your temper and keep out of disputes with "back seat" drivers.

TWENTY TIMES AROUND WORLD
Twenty times around the world! Such, at any rate, is the distance American motorists could travel on their 500,000 miles of surfaced roads.

Nash in 4th Place in Registration of Sweden's Cars

This year, which is to wind up the biggest in the history of Nash Motors, with all production and sales records, is interesting for the reason that Nash has established itself formidably in foreign fields, according to O. E. Springer of the Nash Suburban Sales of Winnetka.

"While Nash has become the leader in sales registrations for six cylinder cars in many states in this country, figures have just been released showing that the "400" series is stepping rapidly to the front in many European countries," he says. "Perhaps of most interest are the statistics which show that Nash is now in fourth place in all Swedish automobile registrations." Charles W. Nash who recently visited the automobile shows in Europe brought back this information and all reports in Denmark and Finland, Nash is finding ready sale.

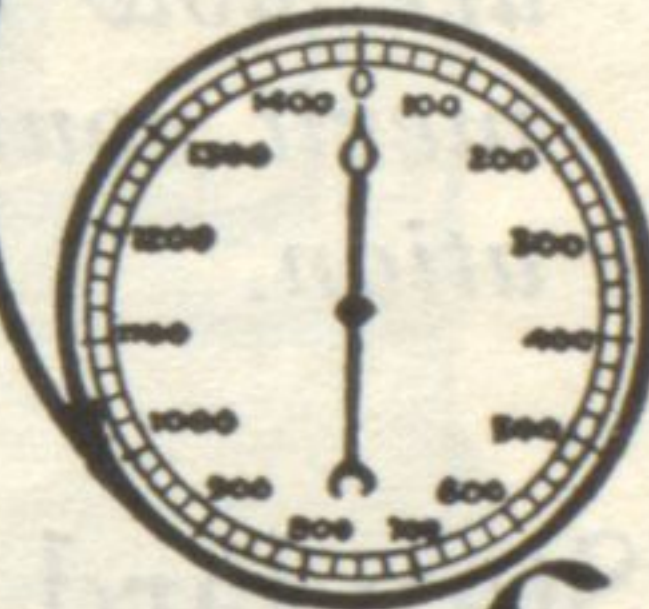


Are Your Brakes RIGHT

If your brakes aren't right you had better not take the car out. If you don't know whether they are or not, there is only one thing to do: Drive your car onto our Jumbo Giant Brake Tester and find out. The test takes two minutes and is free. It should be made every thousand to fifteen hundred miles.

Here is the service the careful motorist has been waiting for. There is a gauge for each wheel that tells you accurately just what each brake is going to do in an emergency.

By having any needed adjusting and equalizing done right on the "Jumbo" you drive away knowing that your brakes are in perfect condition and there is no more satisfying feeling in the world.



See FOR YOURSELF
Right before your eyes—on accurate hydraulic gauges—the JUMBO Brake Tester reveals the true condition of the brakes on each wheel. Eliminates all chance for human error—no guesswork. Assures positive equalization and perfect balance of brakes—maximum braking efficiency—"guaranteed safety!"

FERD. PLATE

HYDRO-ELECTRIC BRAKE SERVICE
All Types of Brakes Serviced
Authorized Service

Bendix
Mechanical Brakes

Lockheed
Hydraulic Brakes

LORRAINE LIGHTS
2212 W. Railroad Ave. — Corner Noyes St.
EVANSTON
Greenleaf 2122