

### Denatured ALCOHOL

The best protection for the radiator in zero weather

per 85c gal.

**E. B. TAYLOR CO.**

Hardware

546 Center St. Phone 999

### North Shore Entertains Elsa Jemne, Noted Artist

Elsa Jemne, well-known portrait and mural painter, is the guest of Mrs. Paul T. Gilbert of Kenilworth. She is giving a one-man exhibit of Indian portraits at the Indian Trading Post in Chicago. Mr. Leighton of the trading post will give a reception for Mrs. Jemne next Wednesday night at the trading post. Among those planning to attend is Mrs. Harold L. Ickes of Winnetka. Mrs. Jemne was here last year to paint a portrait of the son of the Louis Swifts of Lake Forest.

### Frederick K. Copeland Taken by Death

Winnetka Civic Leader and Prominent Engineer Stricken at Claremont, New Hampshire

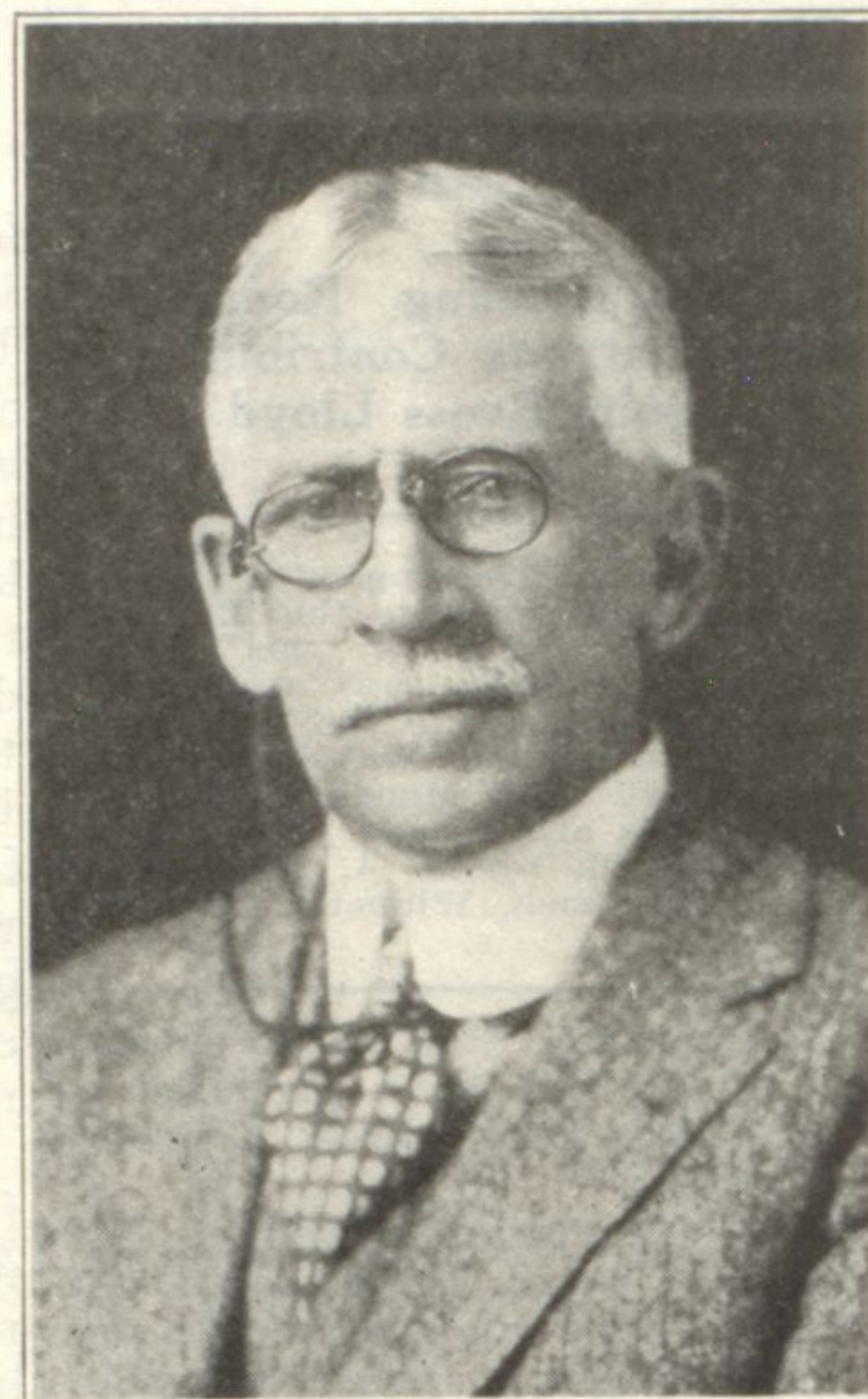
Frederick Kent Copeland, 665 Prospect avenue, Winnetka, president of the Sullivan Machinery company since 1892, died at Claremont, N. H., Saturday, November 10. He was on a visit to the company's eastern works at Claremont, when he was taken ill. It became necessary to operate for appendicitis, death resulting two days later.

Mr. Copeland was born in Lexington, Mass., and was graduated from Massachusetts Institute of Technology in 1876. After several years spent in Iowa and Colorado in mining engineering work, he helped organize the Diamond Prospecting company in 1884, and later became its president. This company engaged in contracting with the diamond core drills made at Claremont, N. H., by the Sullivan Machine company.

In 1892 the two companies were merged as the Sullivan Machinery company with Mr. Copeland as president. Under his leadership Sullivan products were developed for a wide range of purposes, serving the mining, quarrying, construction and manufacturing industries, manufactured at plants at Claremont, N. H., and Michigan City, Ind., and a worldwide sales organization has been built up.

#### Active Until End

Mr. Copeland maintained active leadership up to the date of his final illness. He was a member of numerous engineering societies, including the American Institute of Mining and Metallurgical Engineers, the American Society of Mechanical Engineers, the New York Engineers' club, and of the Bankers' Club of New York, and was a past president of the Engineers' Club of Chicago, of the Western Society of Engineers, and of the National Metal Trades association.



Frederick Kent Copeland

He had served as trustee of Massachusetts Institute of Technology, and in earlier years, as a member of the Winnetka Village board. He had been a resident of Winnetka for nearly 40 (Continued on Page 64)

## National Market

802 Elm Street Winnetka

Telephones Winnetka

**655-656**

### 1927 **1st** 1928 anniversary

ONE year ago this week the National Market opened for business with the idea of giving a superior service. "The Home of Quality, Service and Reasonable Prices"—"Clerks Courteous and Obliging," "Delivery service—as you want it," are not catch phrases—they are a part of our business creed and performance.

How well we have succeeded in living up to these ideals is proven by the ever-increasing patronage week by week.

We shall continue to strive to merit your patronage for many more years to come. A Satisfied Customer is our best advertisement.

We Put the "Eat" in "Meat"

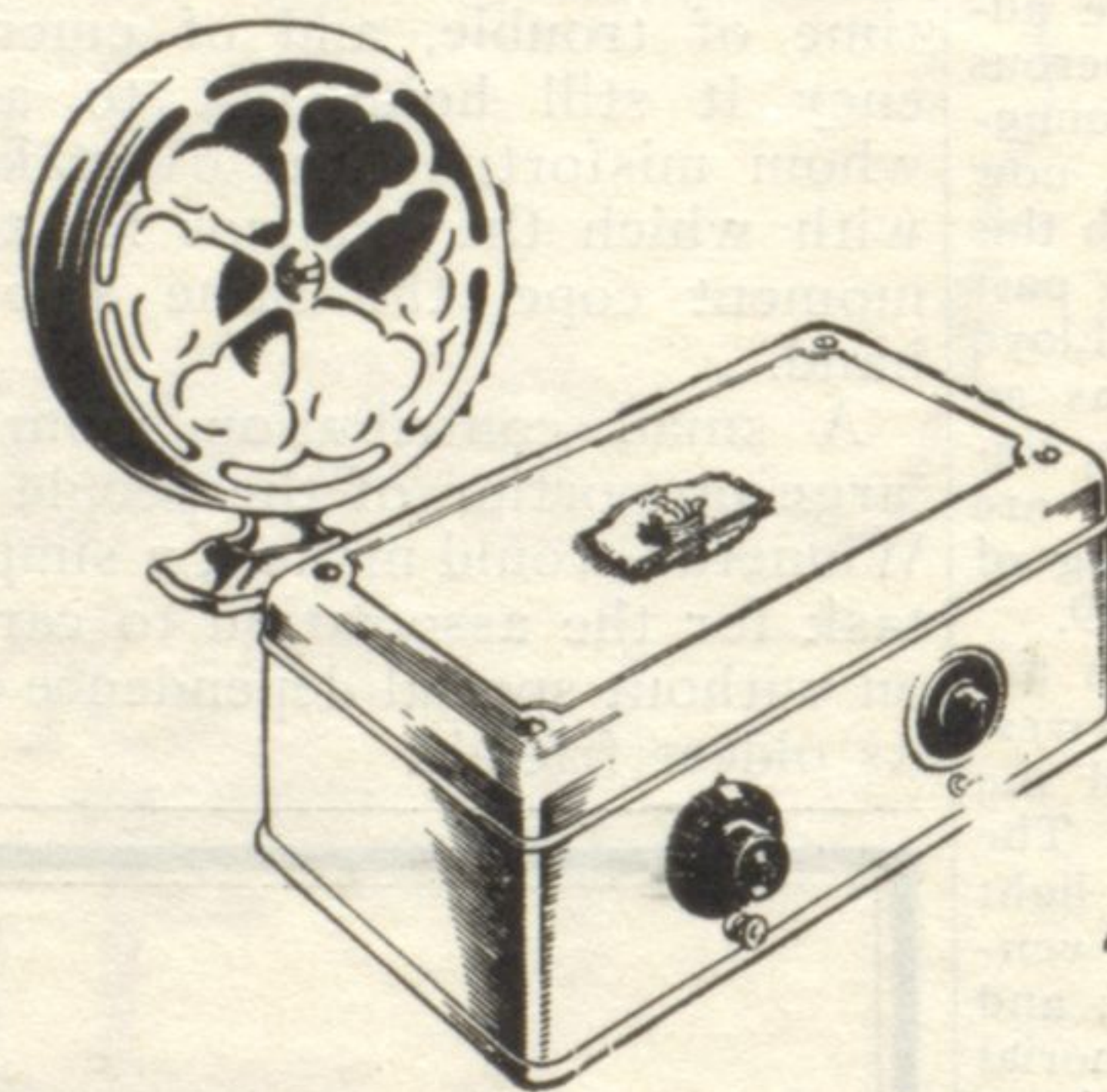
GEN. LEG SPRING	29 1/2c
LAMB, lb. ....	29 1/2c
BABY PORK LOINS, 6-8 lb. average, lb. ....	39 1/2c
LEG or LOIN Milk-Fed Veal Roast, lb. ....	29c
GENUINE SPRING LAMB, ROAST, boneless, lb. ....	24c
STANDING SHOULDER LAMB ROAST, lb. ....	29c
CHOICE BONELESS PORK ROAST, lb. ....	32c
FANCY BONELESS VEAL ROAST, lb. ....	39 1/2c
FRESH DRESSED Dry Picked Frying and Roasting Chickens, lb. ....	38c
CHOICE LONG ISLAND DUCKS, lb. ....	75c
NATIVE POT ROAST, from ....	42c
BONELESS RIB ROAST, 5 to 6 lb. average, lb. ....	

A Large Selection of Fresh Fish each Friday  
Don't fail to order your Thanksgiving poultry early

**SPECIALS      SPECIALS      SPECIALS**

for our

**FIRST ANNIVERSARY SALE**



The  
MODERN  
ELECTRIC  
SET..  
A C

## ATWATER KENT

Many events are now on the air—millions of dollars worth of entertainment—all ready for you to enjoy. And you will enjoy them with a Model No. 40, the compact and economical battery-less radio. **\$77**  
Hear it today—easy terms if you wish.

## Porter's Electric Shop

O. L. Porter

797 ELM ST.

PHONE WINNETKA 44