

# NORTH SHORE MOTOR NEWS



## 40 FOOT WAUKEGAN ROAD TO BE OPENED TOMORROW

### North Shore Highway First to Be Widened—Stretch of Nine Miles Is Completed

Mark down a new achievement for the north shore. A forty foot motor pavement of nine consecutive miles, the first big job of road widening in Cook County, is an accomplished fact and it is to be found on none other than the famous Waukegan road. The forty foot strip extends from a point just north of Touhy avenue to another point one mile north of the village of Northbrook.

The contractors have completed the work and it is said that the highway department will open the wide thoroughfare for traffic tomorrow.

The fact that Waukegan road was chosen for this first big improvement is recognition of the importance of this north and south artery. Waukegan road long has been a busy traffic thoroughfare, being one of only a couple of arteries of entry to Chicago from the north. Traffic on Sundays when this highway was a two lane affair has been more than congested. Something had to be done and the County board has taken the big step.

#### Highway Men to Watch Traffic

Highway officials will keep a watchful eye on Waukegan road for several months now that it has been widened because this road building job will, serve as a demonstration of what a forty foot highway will do in the way of carrying traffic with safety and speed. It is believed that the four lane highway will solve the big problem.

One defect in the continuous stretch of 40 foot pavement remains. That is at the overhead crossing of the North Western railway near Techny. The overpass remains at a two lane width, but the approach has been paved. Next spring the roadway of the bridge will be widened to conform with the continuous width of pavement.

Another shortcoming of the new pavement line is the crossing of the Chicago, Milwaukee and St. Paul railway tracks at Golf, just north of Morton Grove. This crossing is made at grade, but the pavement is held at 40 feet in width. Negotiations for the separation of the grades are under way, and ordinarily administrative officials would wait until that question was settled before proceeding with the work.

#### Big Capacity Increase

The old Waukegan road was credited with a capacity of up to 22,000 vehicles a day. The new width will provide a capacity of over 55,000 cars a day, in the estimation of traffic engineers.

Another important highway development is announced. After a delay of several years the state highway department has put under contract the construction work necessary to connect the Northwest highway with the village of Des Plaines. The highway was built by Cook county as far as Barrington a number of years ago and was taken over by the state as highway 19 of the Illinois system.

Necessity for more road facilities to reach Arlington track this year spurred the state to action, and construction gangs are now nearing completion of the pavement from the dead end of the Northwest highway to Des Plaines.

## Cars Idle Sunday

Do you drive your car on Sundays? That's the question one north shore autoist asked another the other day and the answer was:

"No, the old bus remains in the garage on Sundays."

All of which brings out another question which is mighty interesting not only to drivers of cars, but to almost everybody. This is:

What would happen on the highways of the north shore if every owner of a car drove on Sunday?

One driver answered that as well as any other might when he said:

"We might get back in time for breakfast before going to work Monday morning."

It would be interesting to know just how many cars are not used on Sundays. A guess that fifty percent stay in the garages might not be out of line.

## Chevrolet Sedan and Truck Travel Endurance Route

News of the conclusion of what was one of the most hazardous endurance tests ever undertaken by an automobile, the famous Chevrolet trek up through the center of Africa from Cape Town to Cairo, has just been received in this country. Fred Richardson, Winnetka Chevrolet dealer, has just received this information from General Motors. The expedition, consisting of a standard Chevrolet sedan and truck, manned by four adventurers, has, in all probability, crossed the Bosphorus to Constantinople by this time. Twenty-four large European cities are to be visited before it arrives in London. Ten thousand miles will have been traversed when it concludes its history making trip in Stockholm.

The message, telling of the finish of the 6,000 Cape Town-Cairo journey in the astonishing time of 135 days, was lacking in detail.

Of the earlier stages of the perilous undertaking there was no lack of detail.

Knee deep in water for weeks at a time, the expedition plugged doggedly on across treacherous, crocodile infested Bahora Flats and the swollen banks of the Ruvu river. The Bahora Flats are 70 miles across, yet it required only seventeen days to effect a passage.

The sedan is outfitted with two spare petrol tanks each holding seven gallons. It has detachable gauze windows, and seats that drop back to allow sleeping accommodations. Wire screens were fitted in front of the radiators of both sedan and truck to prevent grass seeds and mud from choking the radiators.

Inside the sedan, rifles and shot guns are slung up under the roof. The tire carriers at the rear of both cars have been altered to carry two spare tires. Oversize tires, 31 by 5.00 are used. Both cars are equipped with bumpers, and two lights and a heat meter.

The expedition is expected to reach Stockholm early in October.

#### 23,000,000 CARS IN U. S.

The nation's motor vehicle registration in 1908 was 197,500. It passed the 23,000,000 mark the first of this year.

## Improvements Big Feature of Pierce-Arrow 36 Model

In line with Pierce-Arrow's policy of continual betterment of current models, as opposed to the "yearly model" plan, a notable group of improvements has been incorporated in the Company's larger type of car, the big Series 36 Dual-Valve Model.

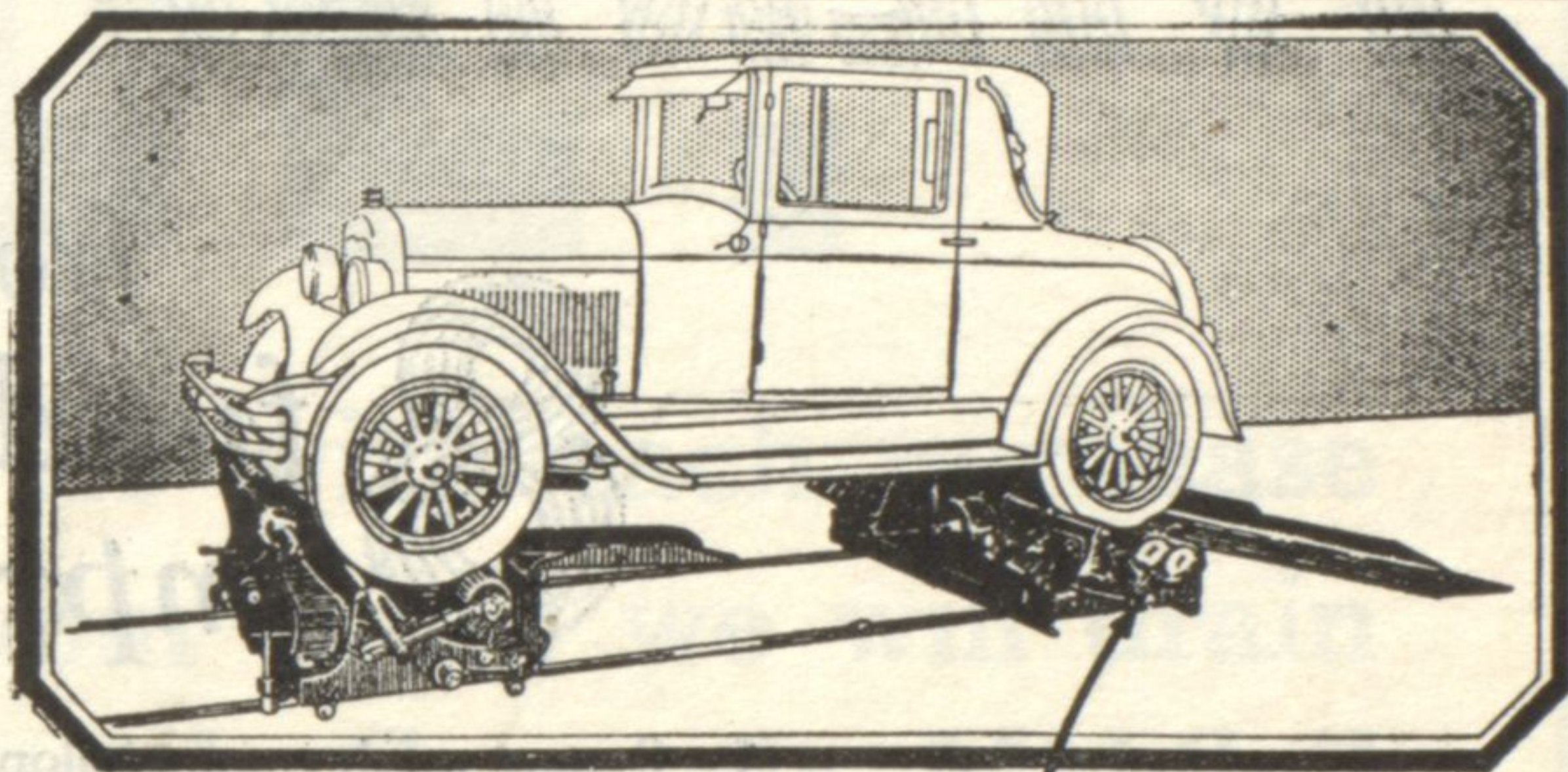
James G. Barber of Evanston, North Shore distributor, is now exhibiting these latest examples of Pierce-Arrow's handcraftsmanship.

"This latest Series 36 with its Pullman-like road qualities now carries engine refinements which have greatly increased its power, its performance and its quietness and smoothness in action," says Mr. Barber. "Improvements likewise have been made in the Isotta-Fraschini type of four-wheel brakes which give far easier and more positive control over the remarkable power performance."

## Chandler Dealer Reports Big Gain in Sales Over 1927

Chandler's new line of sixes and eights has resulted in big gains over the corresponding period of last year, according to Tom Hay and Son of Evanston, dealers.

"September will register a 128 per cent gain in sales over the volume booked during the same months in 1927," says Tom Hay. It has been generally proven true in the automobile industry, that the greatest buying trend has been shown during the first six months of any year. Nevertheless, this does not prove true with Chandler this year. So great has been the buying interest in the new Sixes and Eights, that Chandler's sales for July, August and September will far exceed the entire volume booked by the company for the first six months of 1928.

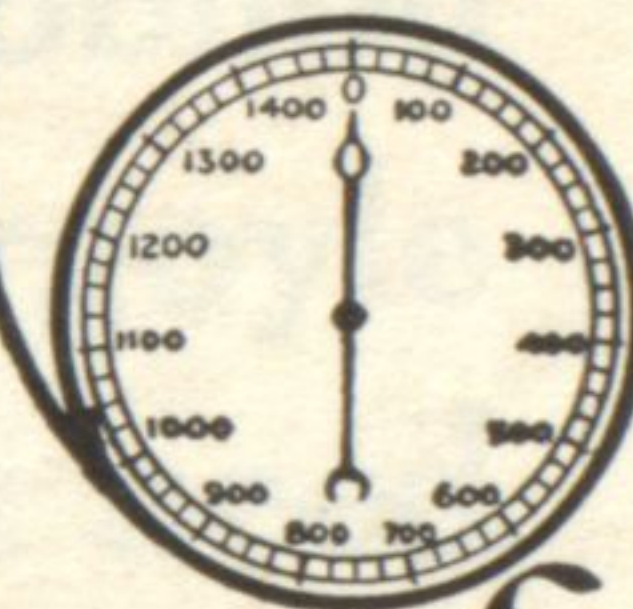


# TODAY

Stop taking chances. Two minutes—any two minutes—will put you on the safe side. For that's all the time it takes to drive onto our Jumbo Giant Brake Tester and find out exactly how your brakes are working—and the test is free.

Four gauges record accurately how each brake is functioning. If there is need of repairing, leave the car right on the "Jumbo". When the adjusting and equalizing has been completed, the gauges will show perfection.

Then you can drive away knowing that whatever emergency arises your car will stop when you want it to. Make the Jumbo Test every thousand to fifteen hundred miles. It is as important as oiling and greasing.



See

### FOR YOURSELF

Right before your eyes—on accurate hydraulic gauges—the JUMBO Brake Tester reveals the true condition of the brake on each wheel. Eliminates all chance for human error—no guesswork. Assures positive equalization and perfect balance of brakes—maximum braking efficiency—"guaranteed safety!"

## JUMBO BRAKE TESTER

Testing, Adjusting and Relining All Types of Brakes. Exclusive Authorized Service for North Shore on BENDIX-MECHANICAL and Lockheed Hydraulic Brakes.

# FERD. PLATE

2212 W. Railroad Ave. at Noyes St. Ph. Gr. 2122

## EVANSTON

Sales and Service

Westinghouse Automotive Brakes

Lorraine Lights

Gabriel Snubbers

PINES WINTER FRONTS