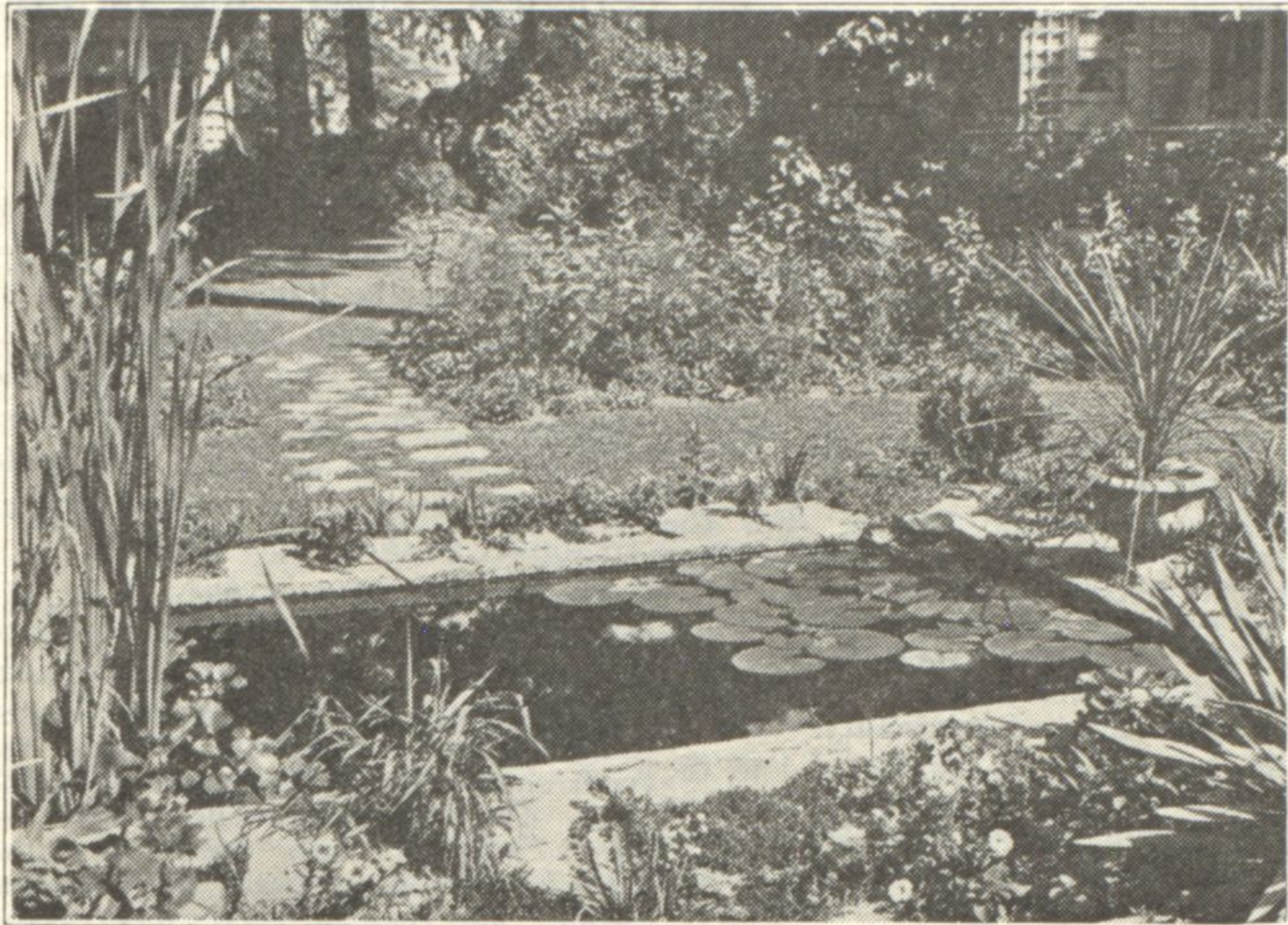


### Ewer Garden Takes Prize



The garden of Mrs. C. D. Ewer at 1111 Ashland avenue, Wilmette, took third prize in the Tribune Garden contest held this summer. This is one of several north shore gardens which placed in the contest. The pool shown above is in the rear of the garden, lending the dignity of a formal arrangement to a small garden. The rushes and water lilies give a pleasing balance to the pool, and the stretches of open lawn give space to the garden.

### Novelty Luncheon Sets Relieve Linen Formality

Linen damask for the table covering is decreed by the authorities as the only table covering for the formal occasion. Many variations for the informal occasion are found in the shops. Among these is the painted luncheon set which comes from China. Designs are painted on sheer material which are suitable for the season. For spring there is the cherry blossom, for fall there is the chrysanthemum, and for Christmas we have the poinsetta. Newer, and perhaps a little smarter, is the paper set found in the gift shops along the north shore. The place mat and little paper napkins are admirable for Sunday night buffet suppers. These little imports are dainty enough to please the most discriminating. Many of the napkins have fluted edges and look like novelty handkerchiefs in some cases.

In planning a rock garden, it is best to have the area about the pool almost level or sloping very little, so that the heavy rains will not wash the dirt into the pool.

### Garden Demands Care to Prevent Frost Blight

Fall is the time when the garden begins to turn brown and look bare. The hardy chrysanthemums may be badly frosted unless the gardener watches for the frost and covers his plants with paper or other frost protector before the frost gets there.

Old bulbs which have become overcrowded in the garden should be transplanted right away. Iris should be divided and thinned out, early flowering bulbs should be planted, and flowering plants intended for the house should be potted and brought in to the warmer, protected air.

A good covering of leaves or peat moss should be spread over the beds that need protection during the winter. If seed is sown on the lawn in this month it will have a chance to take root and be established before the spring.

If it is possible to bury leaves or stack the leaves some place where they will decay to a humus they will be valuable next year for a border or lawn. Such a good natural fertilizer should not be destroyed by burning.

## Now is the Time to Plant Evergreens

In all the vast store of plants for ornamental planting none can equal the satisfying richness of Evergreens. They are the aristocrats of the plant world.

Ravinia Nurseries offer only those varieties of Evergreens that have withstood the rigorous tests imposed by climatic variations in the Great Lakes District. Nowhere else can be found more perfect specimens.

Nurseries and office one mile West of Waukegan Road.

**F. D. CLAVEY**  
**RAVINIA NURSERIES, Inc.**  
*The Lake Shore's Largest Nurseries*

DEERFIELD, ILL.    Telephones—  
  { Deerfield 36  
  or  
  Highland Park 36

# Kleen-Heet

The New  
**"CHALLENGER"**  
**THE OUTSTANDING  
OIL BURNER  
SENSATION of 1928**

A MODERN DEVELOPMENT HAS REMOVED  
THE PRICE OBSTACLE FOR HOME OWNERS

A few minutes spent looking at the burner and asking questions will revise your past ideas of oil heat. Come in for such a visit if you possibly can.

# \$285

Tanks Extra

Excellent for warm air furnaces as well as steam and hot water plants.

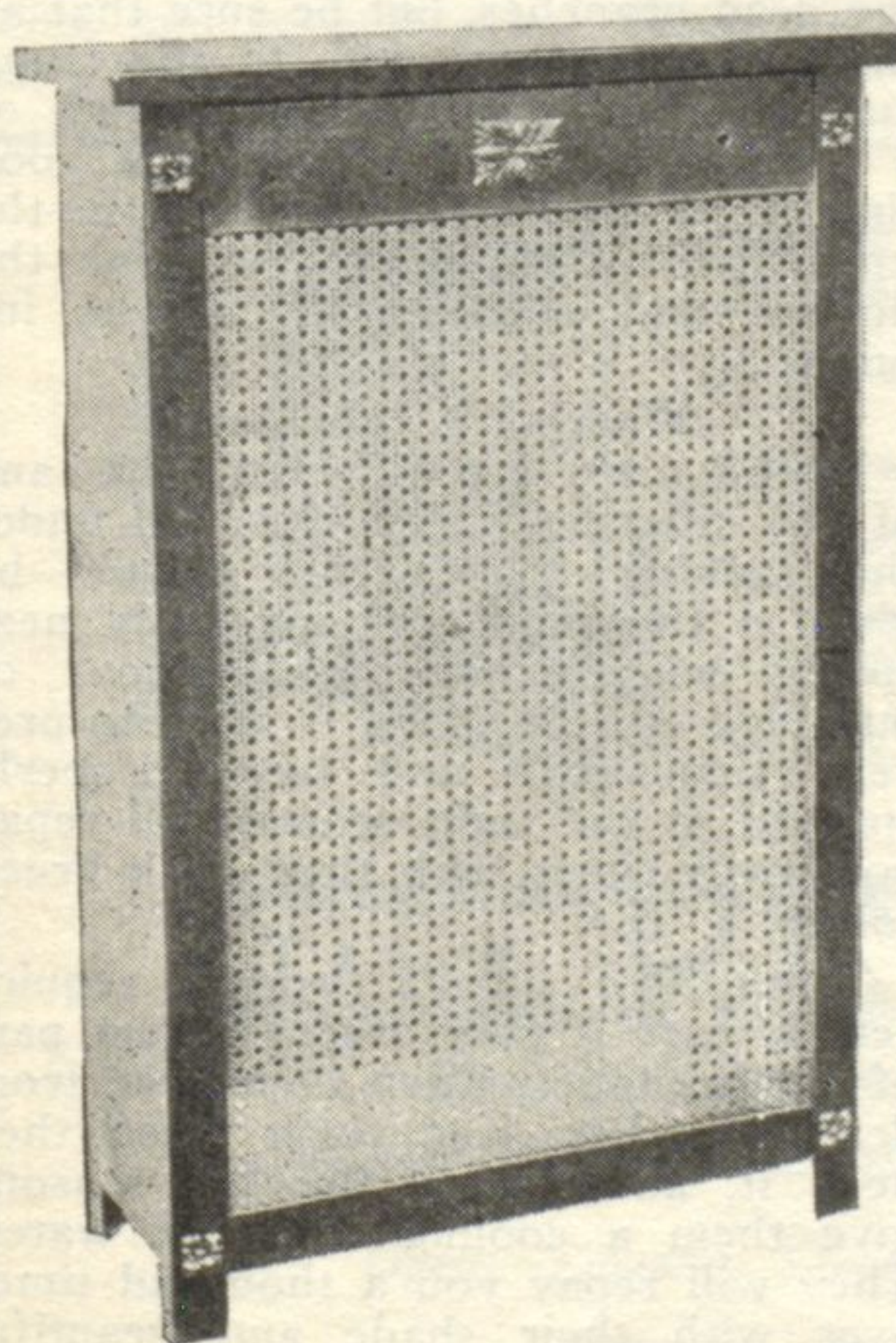
LET US GIVE YOU AN ESTIMATE

## WINSLOW BOILER & ENGINEERING CO.

844 Rush Street. Superior 4650

North Shore, 705 Washington St., Evanston  
Ralph W. Lapham, Mgr.                      Greenleaf 5120

OPEN EVENINGS



### Moistair Radiator Cabinets

*Low in Price  
First in Quality  
First in Efficiency of Heating*

Telephone 8975 Wentworth  
and learn how little it costs to  
equip your home.

*We guarantee to match any color  
scheme desired*

**Moistair Cabinet Company**  
6036 Wentworth Avenue  
Chicago