

## BEFORE YOU BUY SEE THESE NEW HOMES

### 135

New Houses in  
Evanston  
Wilmette  
Kenilworth  
Winnetka  
Glencoe

From a cozy 5 room at \$11,000  
To a spacious 10 room at \$60,000

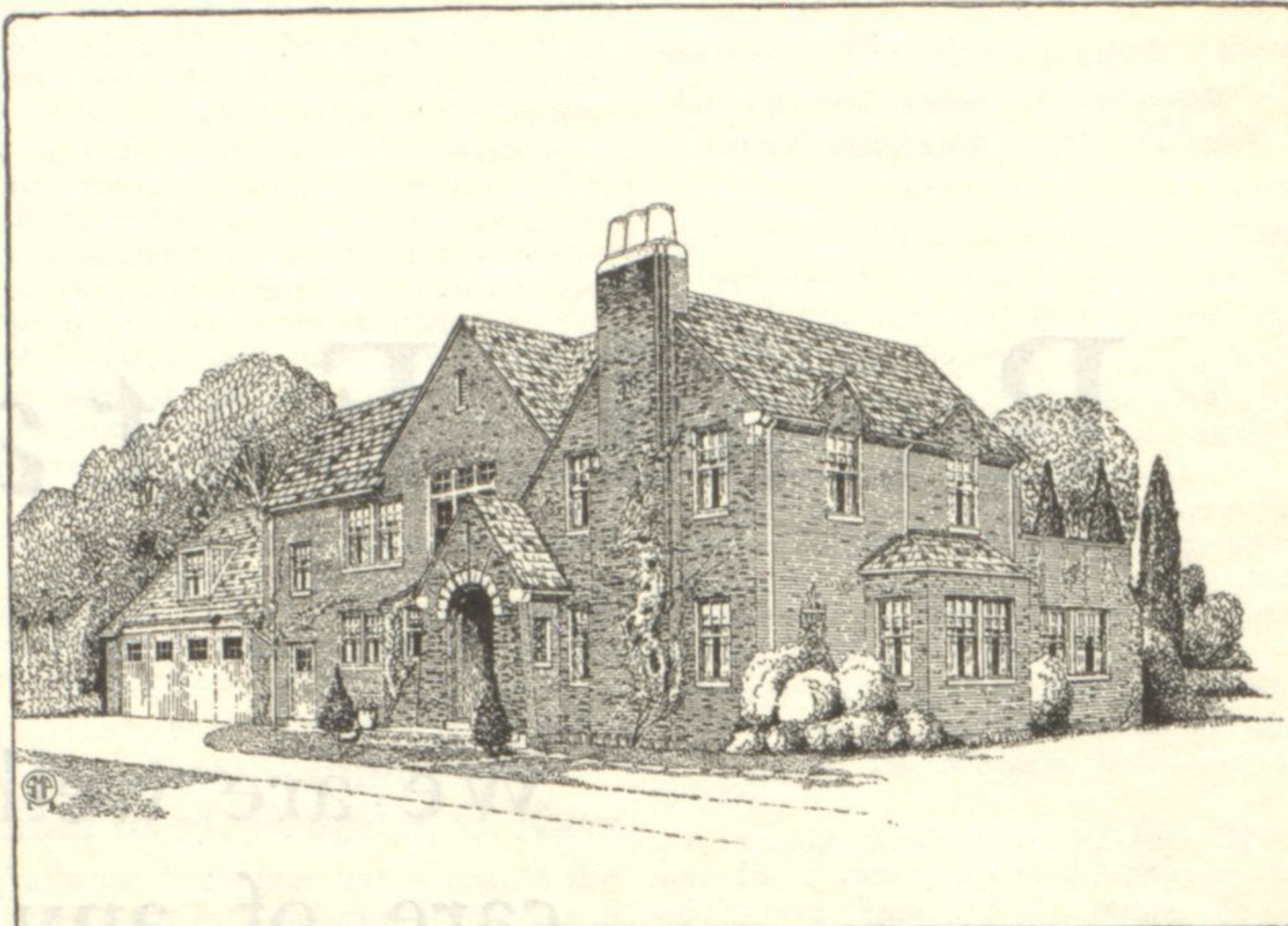


## MOUAT & FLAHERTY

Incorporated

1177 WILMETTE AVE., WILMETTE  
"Opposite the Village Hall"  
Or Phone Wilmette 273

### New Indian Hill Estates Home



Dr. R. H. Henderson of Wilmette is building this new residence on Blackhawk road. It is rapidly nearing completion. Dr. Henderson expects to move in on Oct. 1. Stanley M. Peterson of Evanston was the architect.

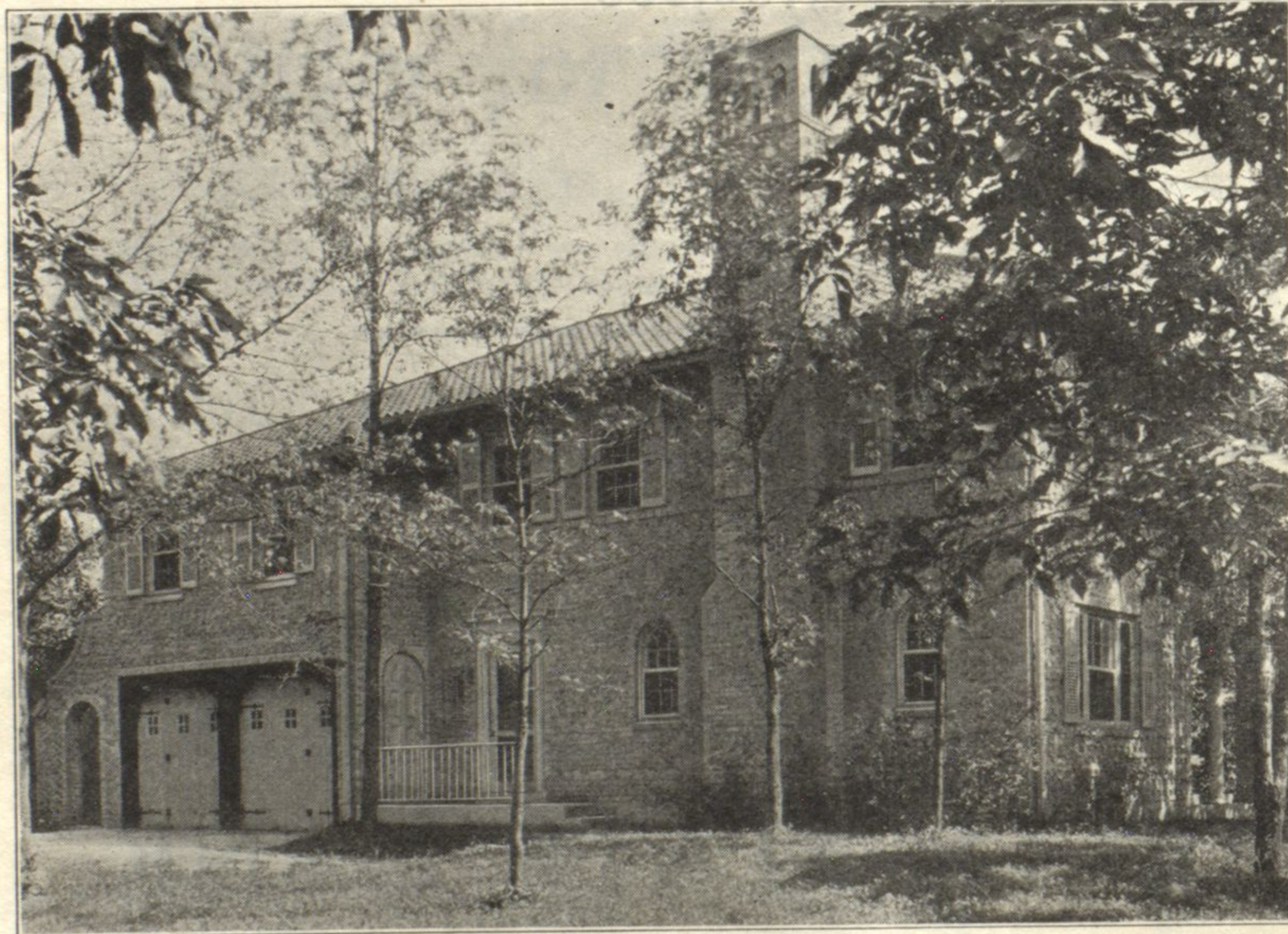
### I. J. Owens Purchases F. Meyer Residence on Sheridan Road

The Ira J. Owens have purchased the Frances Meyer residence located at the north west corner of Hawthorne and Sheridan road. The Owens will take possession some time in October. Henry F. Uhe of E. E. Stults Realty Co., Winnetka office, acted as broker representing all parties concerned.

The 3 story brick building, contain-

ing 21 apartments and 8 stores located at the N. E. corner of Winchester and Montrose avenues., has just been sold by Pietro and Rosa Maria Donatella, to George E. Cropper at an undisclosed consideration, subject to encumbrances aggregating \$169,100. It is on a lot 92x152½ feet and has an annual rental of approximately \$28,475.

Elmer E. Stults of E. E. Stults Realty Co., represented all parties to the transaction, and will continue to manage the property.



### This beautiful Italian Type Home situated in

### THORNBURY VILLAGE

Will be open for inspection and offered  
for sale

SATURDAY and SUNDAY,  
SEPTEMBER 15th and 16th

A masterpiece of architecture and construction—built to endure. Brick exterior with stone trim and tile roof.

A charming interior. The living room is proportioned just right with open fireplace—large living porch; dining room; breakfast room; cabinet kitchen and Frigidaire; first floor lavatory.

On the second floor, four bedrooms and three tile baths—screened sleeping porch. Hot water heat—two-car heated motor room.

Spacious grounds with fine old forest trees make an ideal setting.

A very attractive price. Further details upon request.

### AUTO ROUTE TO THORNBURY VILLAGE

North on Waukegan Road to Rockland Road at its intersection with the electric line at Knollwood; then west on Rockland Road about 2 miles to the station of Thornbury Village on the electric line at the intersection of Rockland Road and St. Mary's Road; then north on St. Mary's Road about 2000 ft. and just across the track of the Chicago, Milwaukee & St. Paul Railway to these houses.

### VIA NORTH SHORE LINE

Take Libertyville train on Skokie valley branch at Wabash & Adams Street to Thornbury Village station (note Thornbury Village office on opposite corner). Walk north 2000 ft. as above.

### THORNBURY VILLAGE ASSOCIATION

W. M. Hopkins, Vice-President

11 S. LASALLE ST.

CHICAGO

STATE 5860