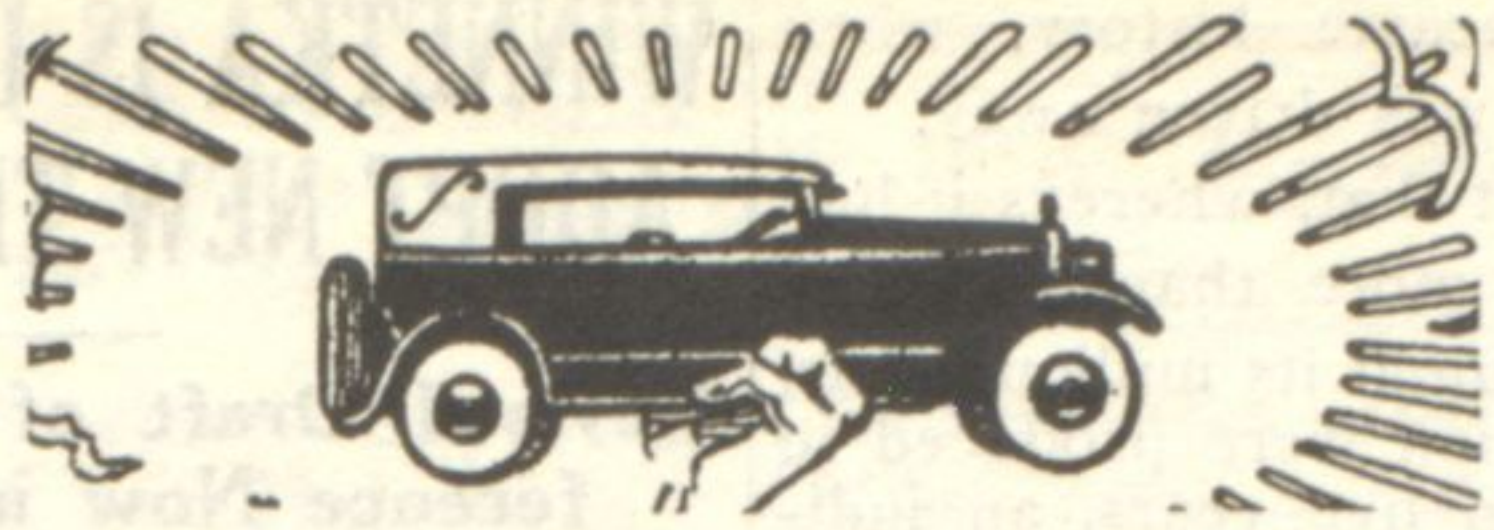
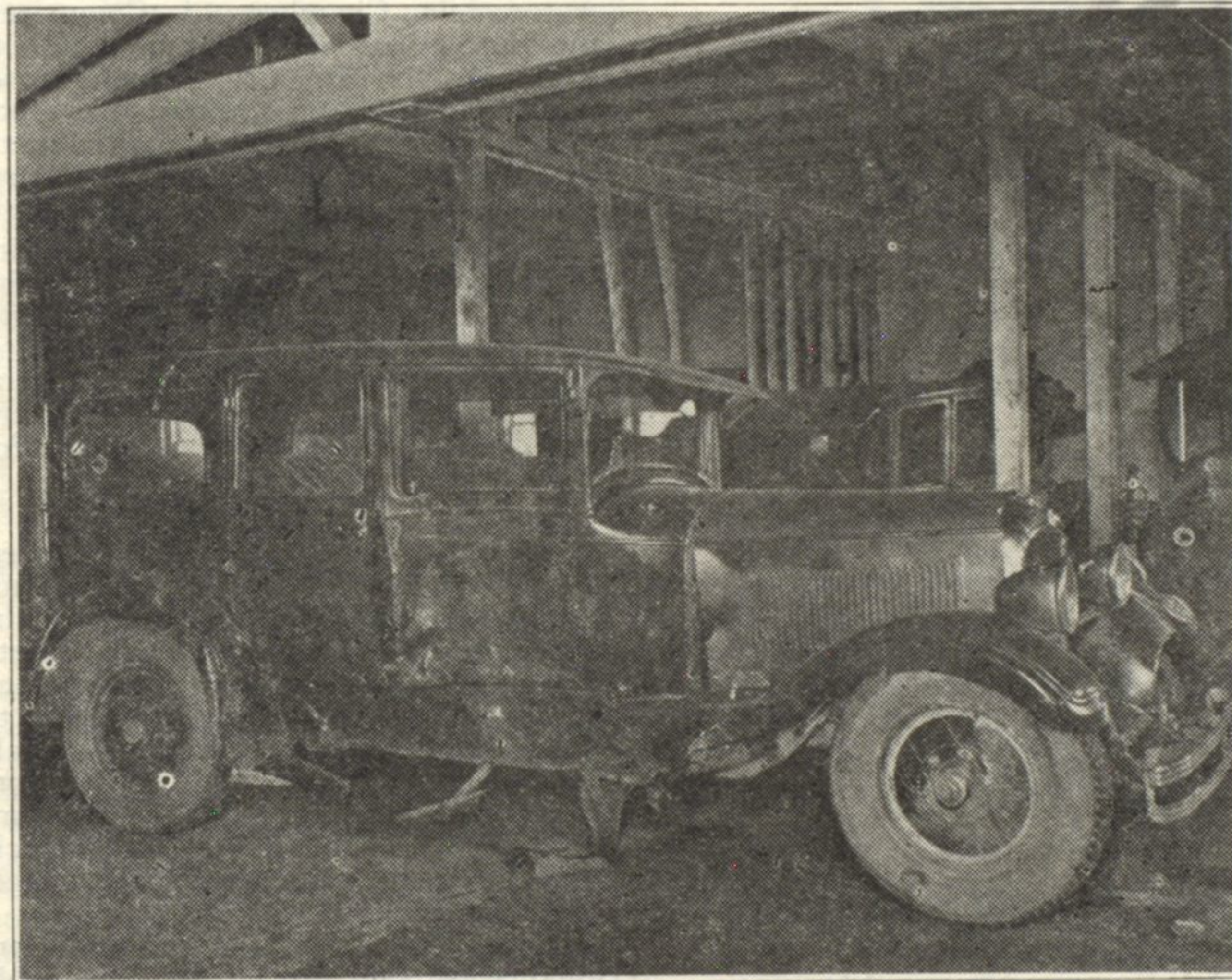
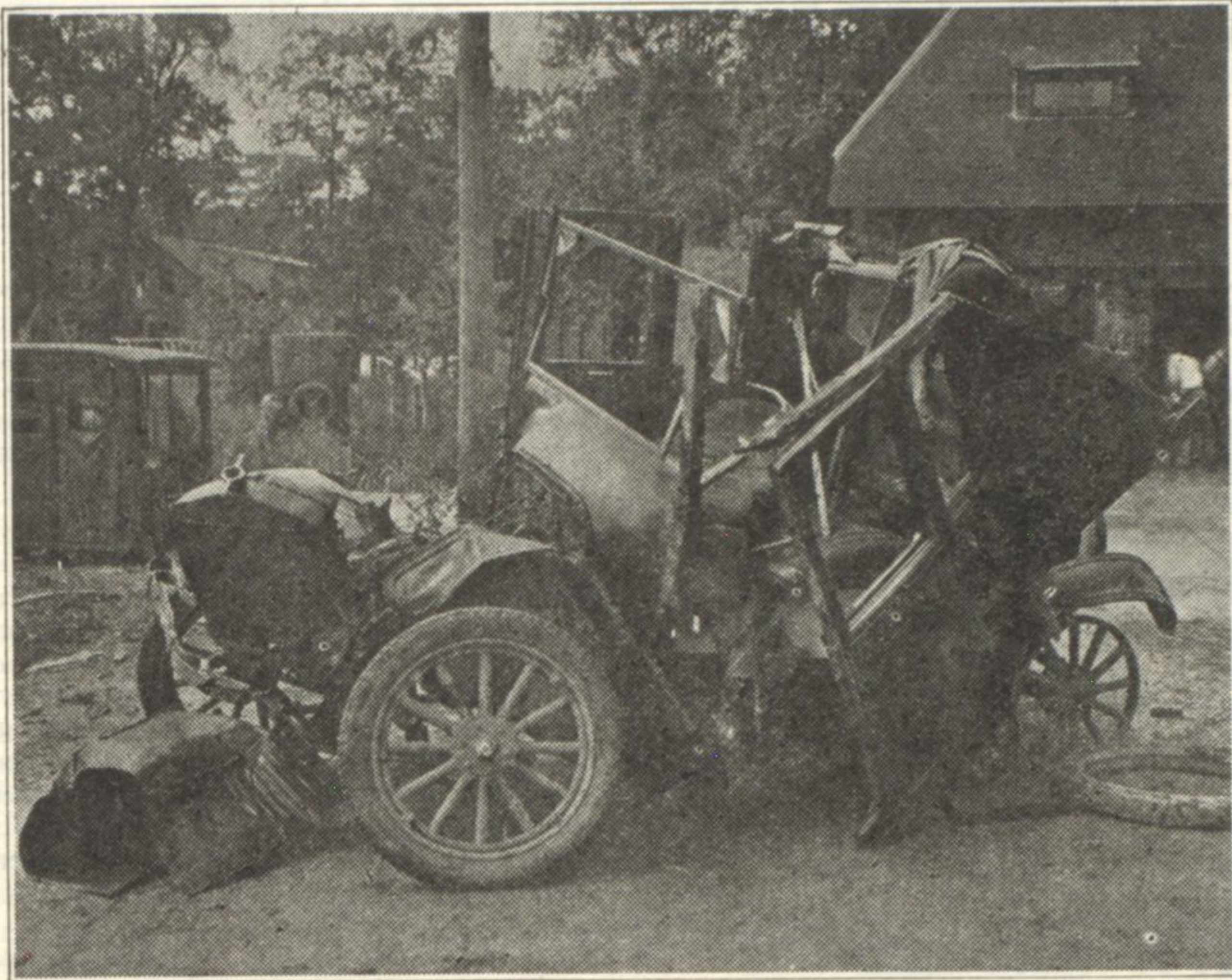


AUTO NEWS



A Warning in Pictures for Careless Motorists



This is what happened when two cars collided at Hibbard and Happ roads last Saturday morning. One car became a mass of junk in seconds; the other, a larger car, had one side crashed in. What's left of both repose in the Hess Motor Service garage. But the reason for publishing these pictures is not to show wrecked cars; it is to point out the danger of careless driving. Two Wilmette youths received severe cuts and bruises, luckily escaping more serious injury in the accident. The Ford car in which they were riding was completely demolished. The other, a Studebaker Sedan, had been stolen and after the accident the driver fled.

America Far Ahead of 1927 in Export of Auto Products

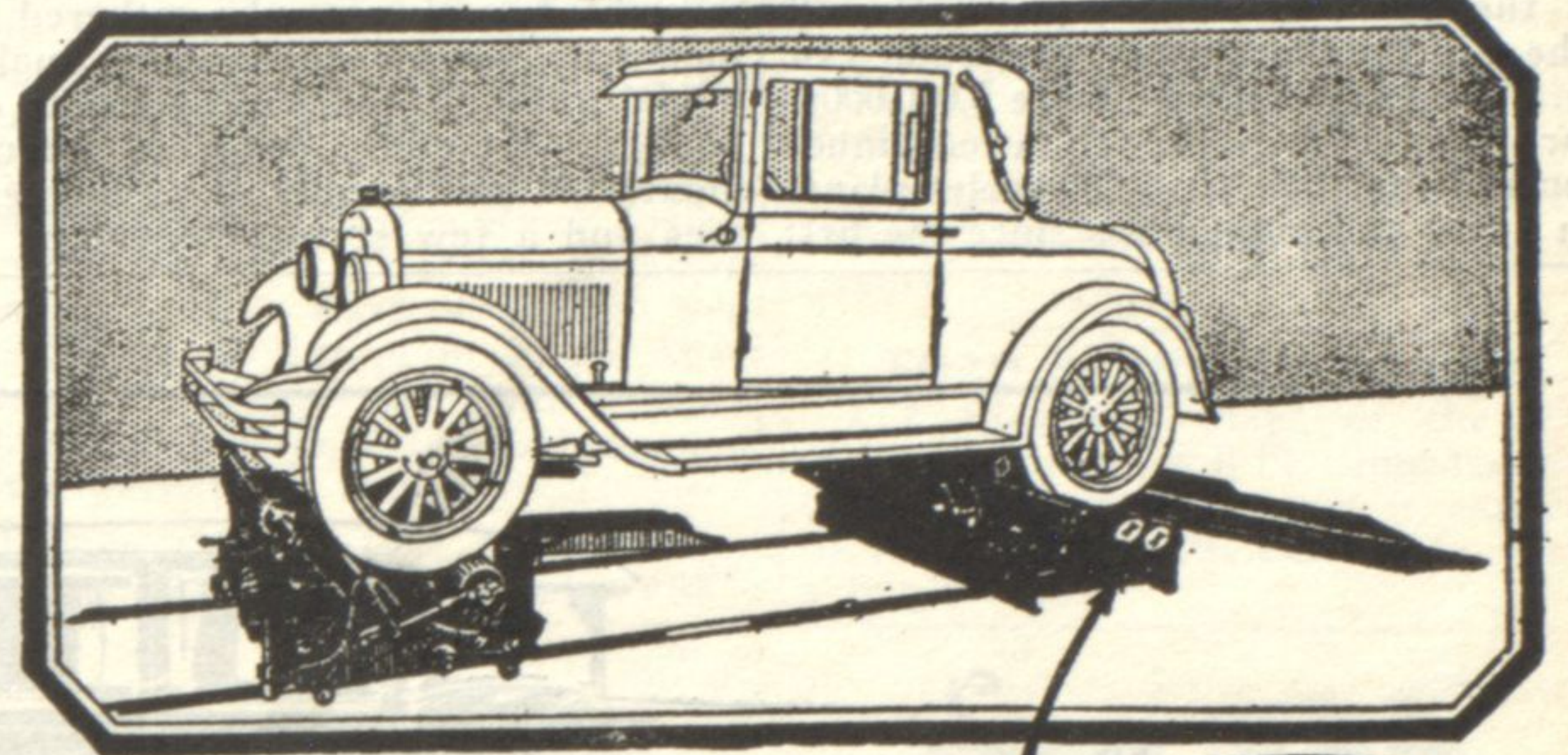
In keeping with increased automobile production, which is considerably above the average for this period of the year, exports of American automotive products during July were 45 per cent greater than for the same month last year, the automotive division of the Department of Commerce disclosed today.

Shipments abroad during July were

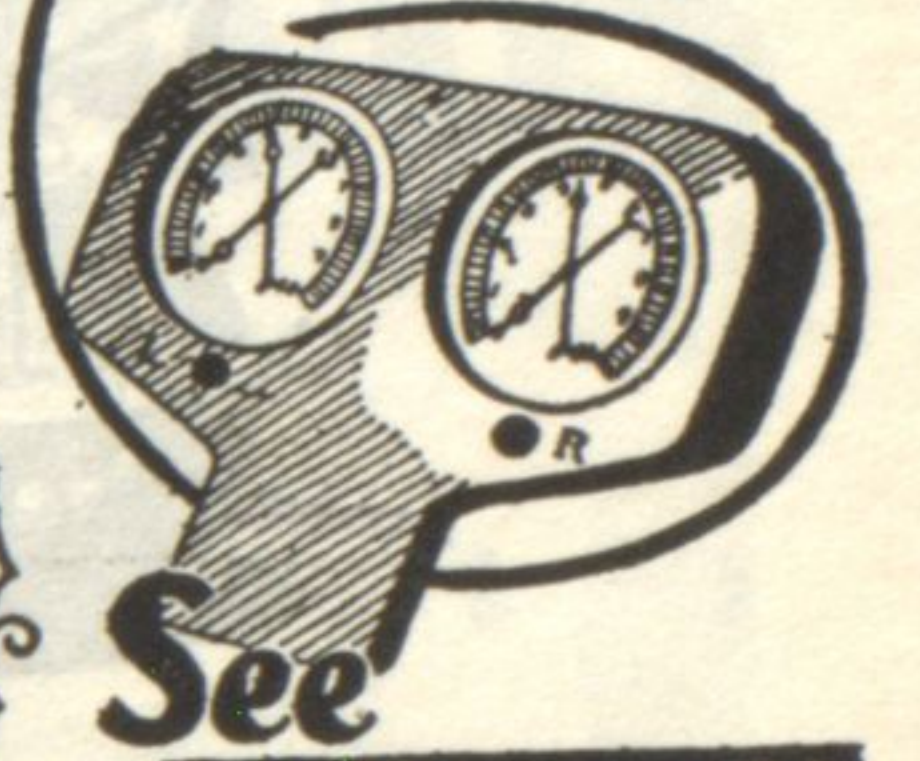
valued at \$46,526,449, an increase of \$677,674, or 1.5 per cent, over the previous month's shipments and \$14,579,093 over those recorded in July, 1927, at which time the figure was \$31,950,356.

Retaining the high level which has marked the previous half year's exports, shipments brought the total value for the January-to-July period up to \$306,461,313, a monthly average of \$43,780,161, as compared with seven months' shipments in 1927 valued at \$253,711,109, and a monthly average of \$36,244,444.

a New Safety Service



BRAKES
cause accidents
or prevent them
-which kind are yours?



See For Yourself

Right before your eyes—on accurate hydraulic gauges—the JUMBO Brake Tester reveals the true condition of the brake on each wheel. Eliminates all chance for human error—no guesswork. Assures positive equalization and perfect balance of brakes—maximum braking efficiency—"guaranteed safety!"

JUMBO BRAKE TESTER

It only takes one skid—one emergency in which brakes fail to hold—to cause an accident. It might be slight—perhaps a jammed fender—and it might cost a life. Why gamble with chance? Brakes, out of balance or not equalized will cause a car to skid to the right or left. Four-wheel brakes—when out of adjustment—add no more to your ability to stop than two-wheel brakes. Your car is only as safe as its brakes. Keep them in perfect adjustment.

We have installed a new JUMBO Giant Brake Tester that scientifically tests two or four-wheel brakes. Use our accurate test every 1500 miles. If adjustments are needed we will make them quickly—at a very reasonable charge.

Testing, Adjusting and Relining All Types of Brakes. Exclusive Authorized Service for North Shore on Bendix-Mechanical and Lockheed Hydraulic Brakes.

FERD. PLATE

2212 W. Railroad Ave. at Noyes St. Ph. Gr. 2122

EVANSTON

Sales and Service

Westinghouse Automotive Brakes

Lorraine Lights

Gabriel Snubbers

