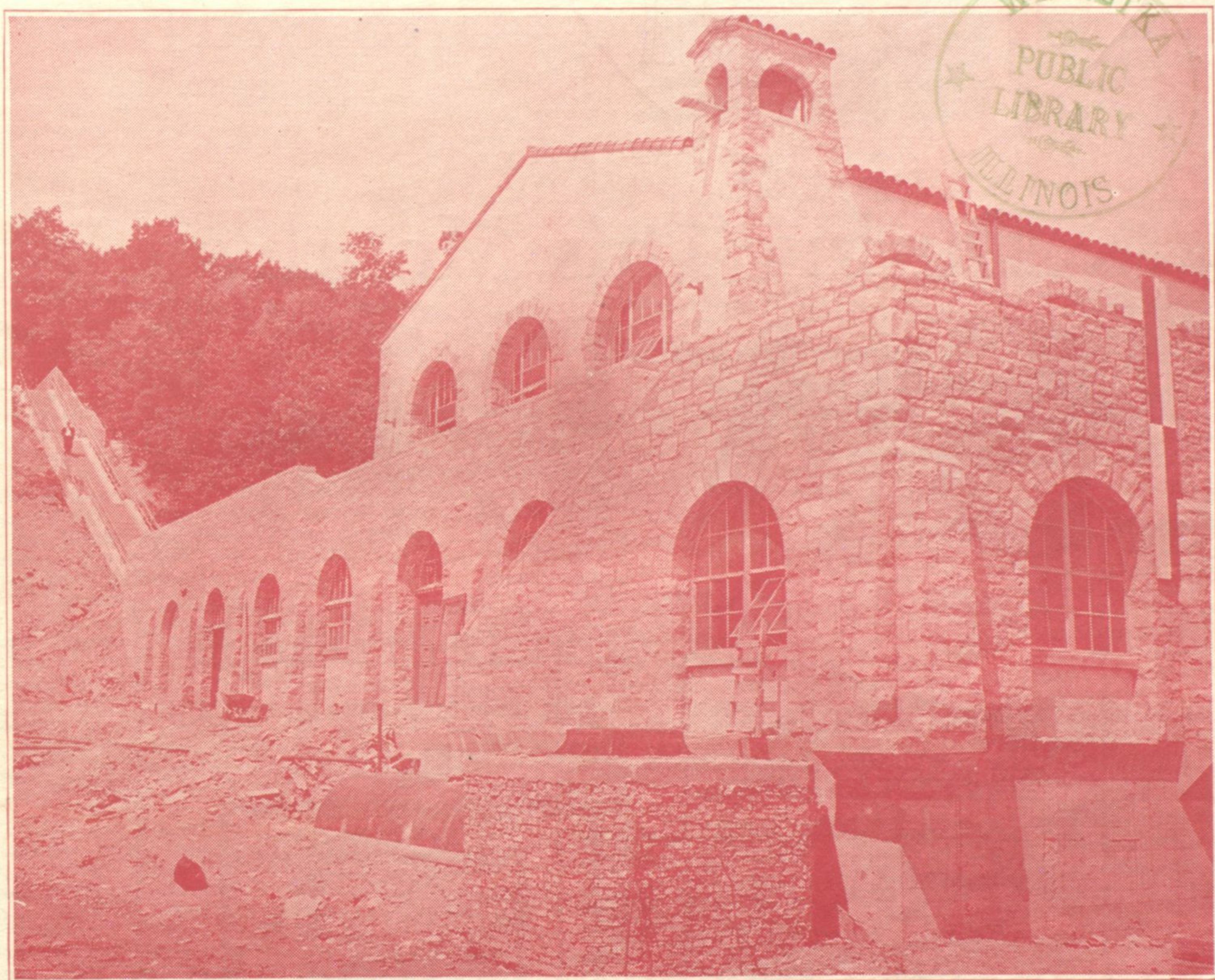


# WINNETKA TALK

September 15, 1928



NOTABLE NORTH SHORE MUNICIPAL IMPROVEMENT—Here is pictured the new Glencoe water and filtration plant which has just been completed. It is a most attractive structure in which Spanish influence gives a fine touch of artistry. It is located at the foot of Park avenue, and is hidden from view by a high bluff. (Story in Real Estate section.)

(Lehle photo)