

# THOMAS J. LYNCH

Tree Surgeons

The North Shore's Largest and Best Equipped  
Tree Surgery Organization

Pruning - Tree Surgery - Spraying  
Power Sprayers

Pneumatic Cavity Machines

GLENCOE 514      Phones      WINNETKA 1294

### MISSOURI MAY "SHOW 'EM"

The people of Missouri will vote on a \$75,000,000 state highway bond issue this fall. The matter will be put before the voters through an initiative petition. Missouri authorized a \$60,000,000 highway bond issue not long ago.

### HOW TO ARRIVE ON TIME

Wise motorists know that the secret of reaching one's destination on time, is not a matter of exceeding the speed limits. The motorist who makes the best time selects the traffic lane that permits him to go ahead without being held up.

A couple of pounds of tire under-inflation will result in somewhat harder steering, and, what is more important, even the small deficiency shortens the life of your tires. Check pressures weekly and they will be in shape for heavy driving.

## WIDE HIGHWAYS CALLED SAFEST FOR MOTORISTS

### President Hayes of Chicago Motor Club Shows Faults of Narrow Roads

The slogan, "Wider Highways are Safer Highways," is finding much favor among motorists who have occasion to negotiate the present system of narrow roads prevailing throughout the country, according to Charles M. Hayes, of Winnetka, President of the Chicago Motor Club, and chairman of the National Wider Highways Committee of the American Automobile association.

"Congestion is one of the greatest contributing causes to automobile accidents," says Mr. Hayes. "Narrow roads can carry only two lanes of traffic. If there is a stop light where the road leads through a village, the flashing of the red light will back traffic up for miles on Saturdays, Sundays or holidays. A slow-moving vehicle, whether it is a truck or someone 'breaking in' a new car, can hold up traffic for miles, causing great delay and irritation.

"Any driver wishing to pass another car must turn out into the path of vehicles coming from the opposite direction, and this is the cause of many serious and fatal accidents. This is all dangerous, it is costly, it is nerve-racking, and it is unnecessary.

Increasing density of motor traffic is causing the construction of wider highways in all parts of the country. This is particularly true of main routes tapping metropolitan areas.

Examples are the Bayshore Highway section being constructed by San Francisco within the city limits to a width of 125-feet with a 100-foot paved roadway; the Bayshore Highway down the Peninsula with a 120-foot right-of-way, now being graded to 60-foot width with a present paved portion of 40-feet; the recently realigned section of the main coast route south from San Francisco with an overall width of 80-feet, consisting of two 30-foot pavements with provision for 10-feet additional on each side; the 100-foot wide Great Highway in San Francisco, consisting of two 50-foot sections; and the extension of Juniper Serra boulevard in the city at a 100-foot paved width.

The state of Michigan has an avenue in Wayne county with a 204-foot right-of-way for 16 miles between Detroit and Pontiac. It consists of two 44-foot pavements separated by an electric railway.

### "PREP" COACH AIDS MOTORISTS

M. H. Wykoff, athletic coach of Joliet Township High School, is spending his vacation as a representative of the Motorists Association of Illinois in the Joliet territory.

Irving Park boulevard is now open to traffic between Mannheim road and the county line; however, this road is closed between Cumberland avenue and Mannheim road. Traffic should be detoured south on Cumberland avenue to Forest Preserve road; southwest to River road; north to Bryn Mawr avenue; west to Mannheim road; and south to Irving Park boulevard.

Chicago to Lake Geneva, Wis.—Via Illinois-19 to Illinois-60; Illinois-60 to Illinois-20; Illinois-20 to McHenry; Illinois-61 to the Illinois-Wisconsin state line; US-12 to Lake Geneva, 73.6 miles. The last stretch of new pavement was opened on this route on August 12. This route is now all paved.

When cars are parked and space is limited, the considerate motorist will give thought to those who will come after him, and will not park carelessly, so as to waste space.

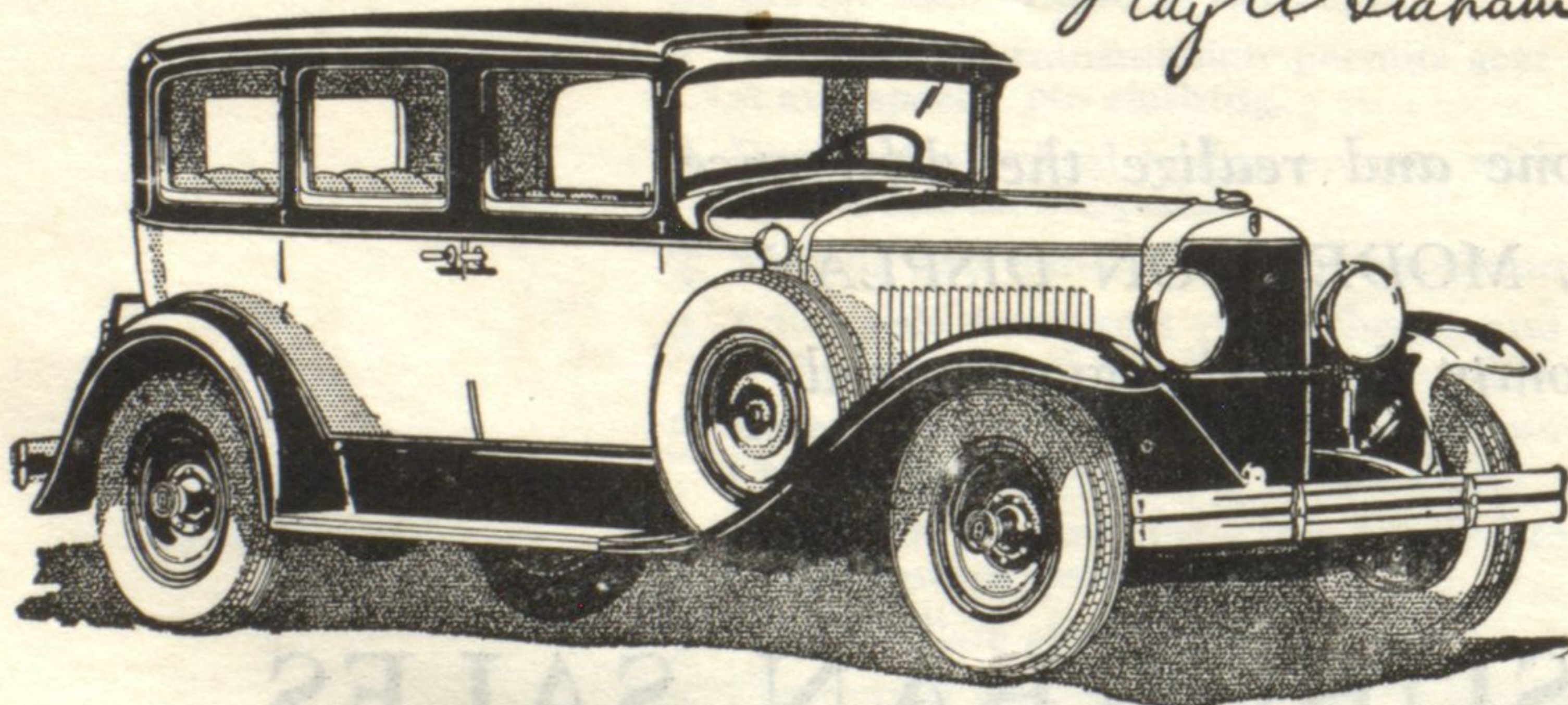


## Distinguished ... by its Performance

Come in and drive the Graham-Paige 629. For only personal experience can convey to you an adequate appreciation of its beauty, smoothness, swiftness—and the distinguished performance of its four-speed transmission (standard gear shift—two high speeds).

Five chassis—sixes and eights—prices ranging from \$860 to \$2485. Car illustrated is Model 629, five-passenger Sedan, with 4-speed transmission (standard gear shift), \$1985. All prices f. o. b. Detroit.

*Joseph D. Graham  
Robert C. Graham  
Ray A. Graham*



## HANSON MOTOR CO.

555-57 Chestnut St.

Ph. Winn. 330

# GRAHAM-PAIGE

(1308-4)