

—Upholstering—

Our service includes everything from cabinet work to the final painting.

UPHOLSTERING—All Kinds of Furniture
MATTRESSES—SLIP COVERS
Repaired—Renovated—Made to Order
ANTIQUES—INTERIOR FURNISHINGS
FURNITURE—of all descriptions made to order
CABINET WORK



HUBBARD WOODS UPHOLSTERY Co.

Mrs. R. Halun

897 Linden Ave. HUBBARD WOODS Ph. Winn. 3014

Graham-Paige Sets New Records in Sales, Shipping

New records in production, shipping, and retail sales are reported by Graham-Paige for July, the fifth month in succession to exceed any previous month in the eighteen years' history of the factory, according to Hanson Motors company of Winnetka, dealers. Shipments exceeded 9,000 for the first time, with a total of 9,010, while production totaled 8,829.

The July gains, it is pointed out, are the more remarkable because they were made when a seasonal decrease in buying is general throughout the industry. Graham-Paige total production for the first seven months of 1928 is 47,573, nearly four times the total of 12,133 for the same period last year, and more than double the production during the entire twelve months of 1927.

Overhead Roads Speed Up Traffic, Cut Motor Costs

Automobiles are taking to the air at highway intersections, at least in effect. Elevated crossings, wherein one street is bridged over the intersecting highway, are now actualities. There are probably two dozen street or rural highway grade separations in the United States and more are being planned or built.

Wayne County, Michigan, is at present building the most elaborate raised intersection in the world. This structure, costing in the neighborhood of one million dollars, will pay for itself in a comparatively short time, it is estimated, through the saving of time and the elimination of accidents it will bring about.

The structure consists of two bridges, each 168 feet long and each carrying a 40-foot roadway and 10-foot walk. Carefully arranged driveways and approaches will permit traffic to pass from one highway to the other without interruption.

In estimating the value of separated highway intersections, highway authorities have determined that a delay of one minute costs the passenger car owner at least three cents. This is considering the year around overhead of the automobile and the operator's time. Since this sum does not include the cost of the time of passengers and such items as gasoline and oil, the three-cent-a-minute valuation is conservative. So two intersecting streets, with a daily traffic volume of 24,000 cars in all four directions, cost motorists \$1,080 a day or nearly \$400,000 yearly.

Big Increase Registered in Automobile Production

June production of automobiles in the United States totaled 396,714 units, an increase of 74,747 passenger cars and trucks over the June production of 1927, which totaled 321,967 units, according to the monthly statistics of the American Motorists' association. Comparing the six months' production of this year with the same period last year, the association's figures show a total gain in 1928 of 42,906 units, the production of the first six months of this year being 2,201,880 units of which 1,965,727 were passenger cars and 236,153 were trucks.

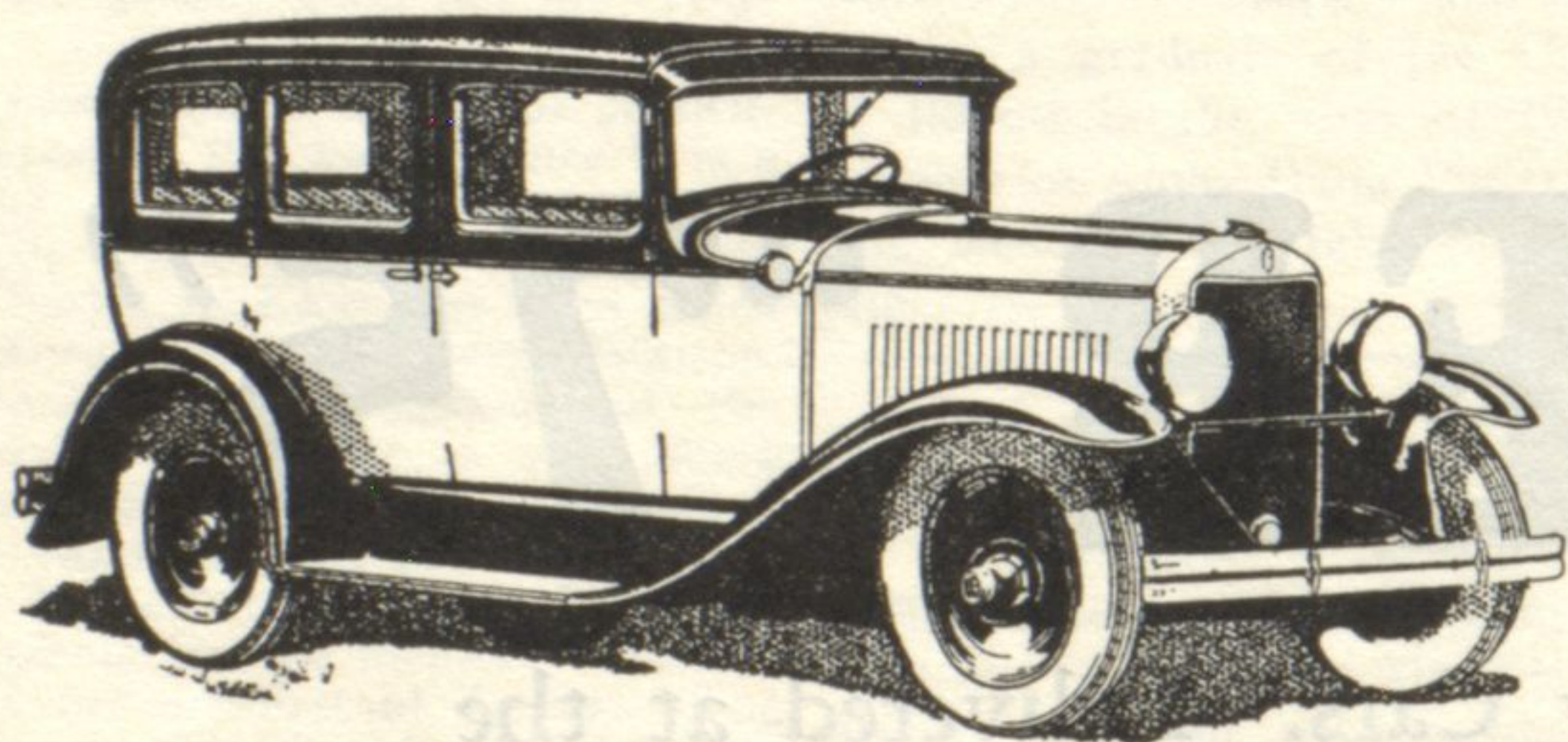
Motor Organization Urges Inter-American Highway

An Inter-American Highway, running from Canada through the United States, Central American States and the States of South America, was urged at the annual meeting of the Legislative Committee of the American Motorists' association. A resolution, endorsed by the Association and other national motoring organizations, was passed by Congress on May 28, and marks the first step in a plan to link the two continents in the Western Hemisphere by a gigantic highway.

BUILD MORE MOTORCYCLES

An increase of 16 percent over the preceding year is revealed in the world's census of registration of motorcycles, as of January 1, 1928, according to the Department of Commerce's figures announced by the American Motorists' association. On January 1, last, there were 1,944,303 motorcycles in operation throughout the world, as compared with 1,674,720 on January 1, 1927. Great Britain and Germany, with approximately 500,000 motorcycles each, have the largest registration. In the United States, but 124,559 motorcycles were registered. The drop in registry in this country is attributed to low-priced automobiles.

Another Record Month



July Sales Greatest of Any Month In 18 Years

AGAIN in July—when motor car sales generally slacken—Graham-Paige broke all sales records for any month in eighteen years; the last week in July being the greatest week in the company's history. And—for five consecutive months, Graham-Paige has established new all-time sales records.

Five chassis—sixes and eights—prices ranging from \$860 to \$2485. Car illustrated is Model 614, five-passenger Sedan, with 4-speed transmission, (standard gear shift), \$1295. All prices f. o. b. Detroit.

Joseph B. Graham
Robert C. Graham
Ray A. Graham

HANSON MOTOR CO.

555-57 Chestnut St.

Ph. Winn. 330

GRAHAM-PAIGE

(1509-5)