

### North Shore Line Family in Annual Frolic Aug. 22

Officials and employes of the Chicago, North Shore and Milwaukee railway are to hold their second annual basket picnic in Sunset park, Highland

Park, Wednesday, August 22. There will be sports and contests for all ages and the annual baseball game between picked teams representing the Illinois and Wisconsin divisions of the road. C. G. Goodsell is chairman of the committee on arrangements.

### Northwestern Graduate Heads Jennings School

Jennings Seminary at Aurora, the only Methodist school west of Philadelphia for high school girls, is undergoing a change of management this summer as Miss Bertha Barber, principal of the school for twenty-four years, has resigned and Miss Abbie Probasco has been appointed to take her place. Miss Probasco goes to Jennings from Idaho where for the last year she was executive secretary of Gooding college. From 1920 to 1925 she was a missionary under the Methodist church and had charge of Conference Academy, a school for boys, at Nanking. Miss Probasco has a background of experience as a high school principal and teacher. Her education was received at Upper Iowa and at Northwestern university and Garrett Biblical Institute where she received her Master's degree in 1927.

### CHRISTIAN SCIENCE SERVICES

"Spirit" will be the subject at the service of The First Church of Christ, Scientist, in Winnetka, Sunday morning, August 5, at 11 o'clock. The session of the Sunday school begins at 9:35 o'clock.

### Urge Tourists to Visit Borden Co., Model Dairy Plant

By Tourist

Some Saturday or Sunday—or, better still, some other day of the week—take the family for a glorious drive to view the beauties of Lake Geneva and visit the internationally famous district where "selected" milk is produced and bottled, advises a tourist. This plant has been inspected and its methods studied by public officials from all parts of the United States and by the representatives of many foreign countries.

The best route at present is by the Northwest highway, and it is suggested that the return trip, for variety, be made via Antioch and Libertyville, and Milwaukee avenue.

It is interesting as you begin to leave the north shore behind, to notice how far to the northwest the real estate developments have extended.

### Historic Landscape

Soon you come into rolling country where every hilltop presents a view of great beauty. The Pottawatomie Indians had their grand lodge on the shore of Lake Geneva, and it was through these hills and valleys that they used to roam and hunt. Arrow heads and other relics are still picked up frequently in the fields of this historic section.

All too soon you will reach the land of the estates on the shores of Lake Geneva. Turning east at Walworth and keeping straight ahead you drive past the beautiful Ceylon court of the Mitchell family and glimpse the quaint buildings moved piece by piece to this exquisite setting from the Chicago World's Fair. If you drive slowly and look back sharply, you can see the statue of Andy Gump at the entrance to Sidney Smith's estate.

### Plant Near Lake Geneva

Right on Highway No. 12, nestling on a hill above the village of Lake Geneva, you find the "Selected" Milk bottling plant of the Borden company. At the side of the plant, a cozy, white reception cottage has been built for the visitors, with all the facilities at hand for comfort.

If you reach the plant before ten A. M. you will find the farmers bringing in their milk. The cans are covered with wet blankets in summer to keep the milk cool. No milk is accepted if the temperature is over 50 degrees Fahrenheit.

The complete process of handling the milk and receptacles in this model plant may be viewed by the visitor in minutest detail. The visitor is also urged to inspect the model dairy farms nearby.

### Add Community Singing to Children's Concerts

At the children's concert on Thursday afternoon, August 9, at Ravinia park, the second half of the program is to be devoted to community singing under the direction of H. Barnhart. The Ravinia players will present a play Thursday, August 16, entitled "The Sleeping Beauty," under the direction of Mildred Haessler. On August 23, the children will have another opportunity to see Ruth Page and the Ravinia ballet, and those who remember the crowds when she appeared a few weeks ago will want to be on hand early. The last program will be on August 30, and will be announced later. Plans are being made to make this a special treat.

Miss Mary and Miss Effie Fake of 905 Vernon avenue, Glencoe, left Wednesday for a trip to Yellowstone park and interesting places in Colorado. They will be gone several weeks.

## B. & G. CANDY

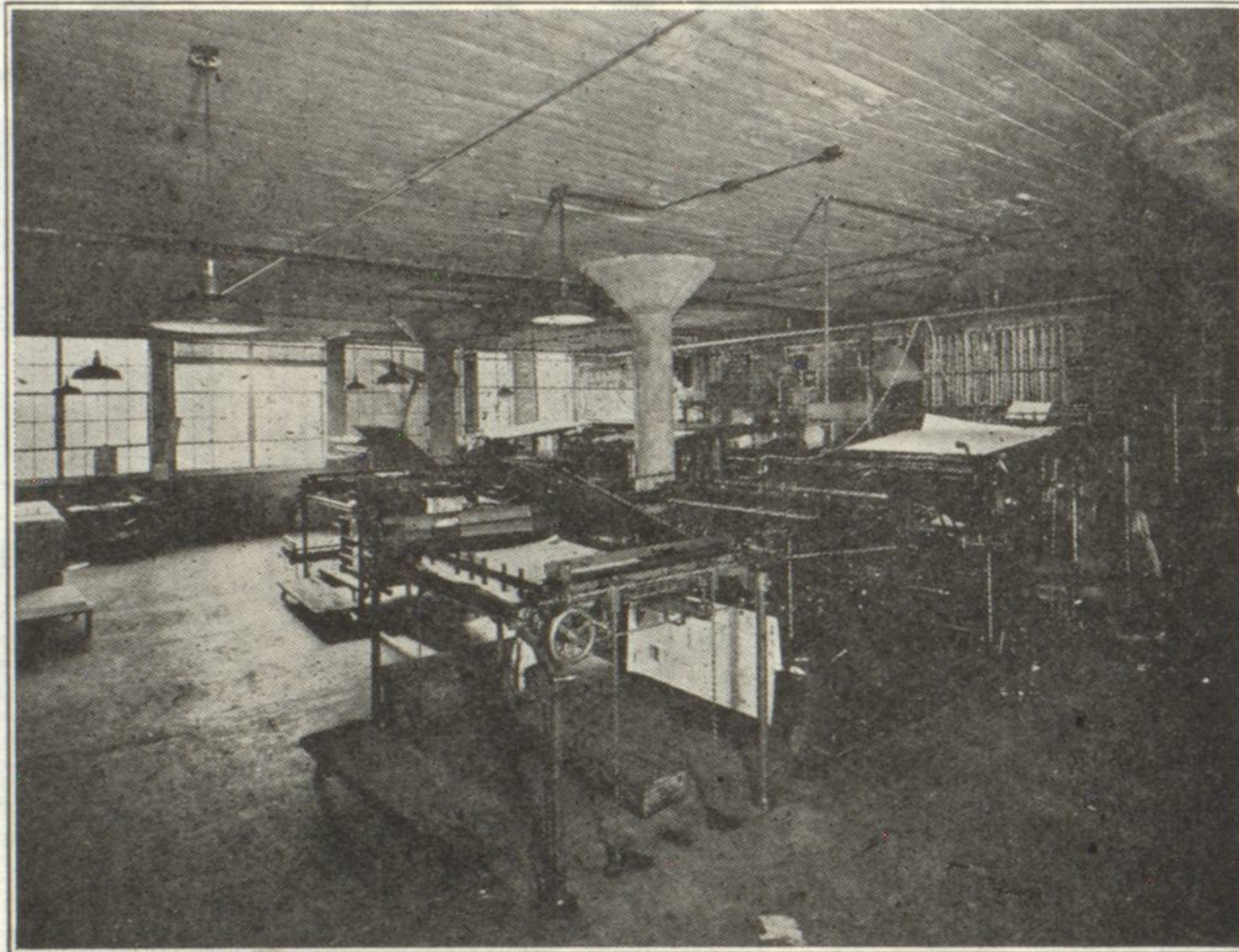
Refreshing home-made candies for hot Summer days — packed in attractive imported German candy tins.

We deliver twice daily anywhere in Evanston

567 Lincoln Ave. Winnetka

1633 Orrington Ave. Evanston

For Better Home Made Candies



### Growing by serving—serving by growing

GOOD PRINTING built this modern plant. And the function of this plant as an organization is to *build* good printing—step by step, from the original idea to the finished product.

## LLOYD HOLLISTER INC.

1232-36 Central Avenue Wilmette

Wilmette 4300  
Winnetka 2000

Greenleaf 4300  
Sheldrake 5687