

Pickwick Offers Golfers Two Championship Courses

HAS LAYOUT EQUAL TO BEST PRIVATE CLUBS

Tees, Greens, Traps Embody Most Modern Ideas; Easy to Reach

Out in the neighborhood of the private golf clubs some twenty minutes west by auto is the Pickwick Suburban daily fee course.

Here is the one public fee course in the Chicago area which rates as a championship course equal to the best in the metropolitan district and better than many private courses. Its tees, greens, fairways and even the rough stamp it as unusual. An observer knowing nothing about the course would, no doubt, think it a private club.

Its tees notably, that ever distinguishing mark between the bankers' and the salesman's course, would deceive. All of them are of good turf, creeping bent, in fact. And the player does not feel he is pushing his tee into rock as is the case on the crowded courses where so many hundred use each tee.

Well Laid Out Greens

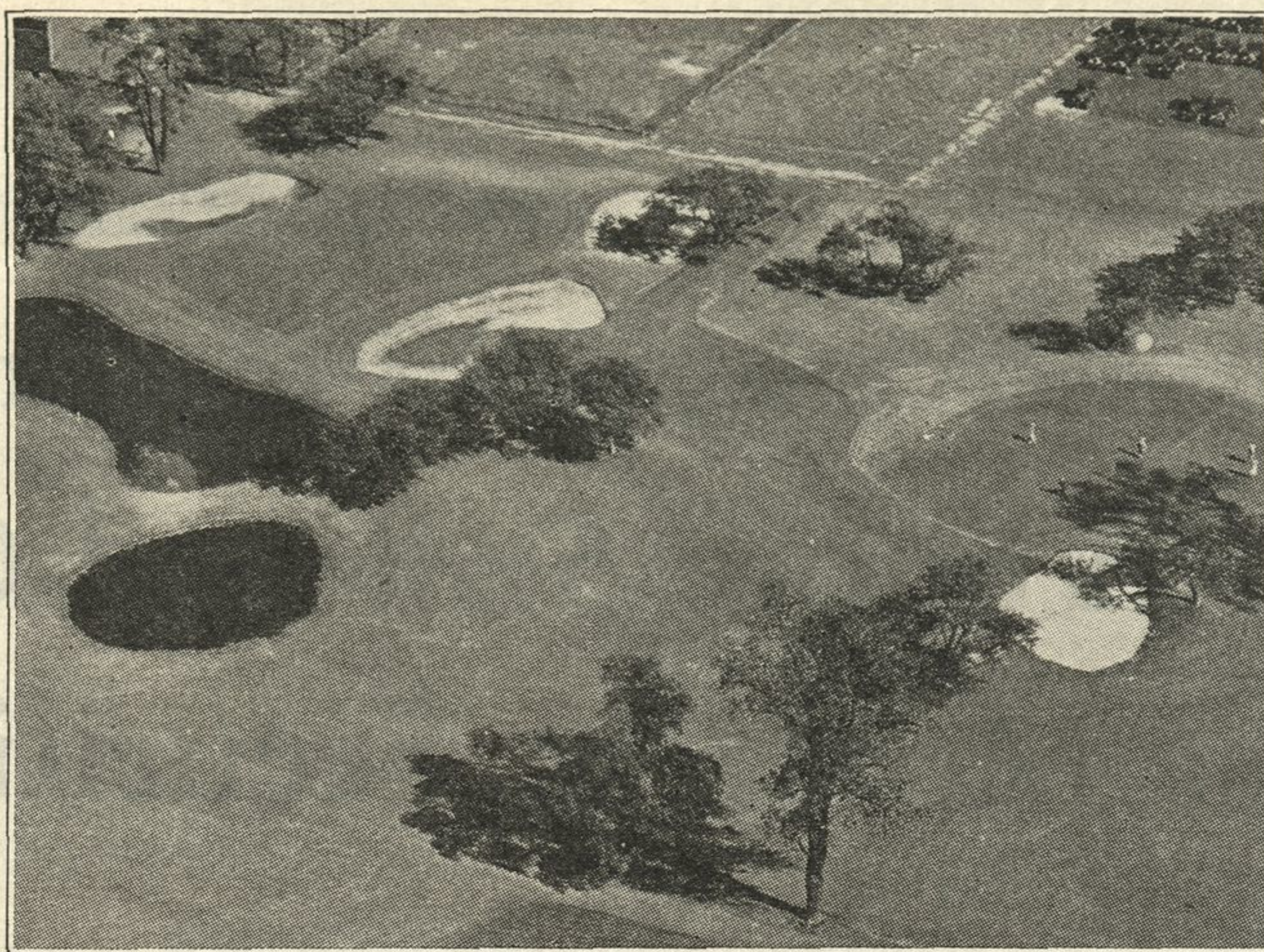
Greens also are carpeted with creeping bent. As is true in standard golf courses, they vary in size and shape, most of them are elevated and all are trapped according to the distance of the shot or pitch necessary to reach the green. Fairways and rough as well are kept in good condition, and trees are not too numerous, though there are several dog-leg holes caused by clumps of trees.

Best features of modern golf course architecture have been incorporated throughout the course by that expert, J. A. Roseman, who has laid out so many courses in the district. Excellence of the course extends to every inch of its acreage, as the most modern treatment of the ground foundation has been given.

Pickwick is located just far enough west to benefit by the rolling land and slight hills which start a distance from here. It is in a country atmosphere away from distracting noises, out where the air is clean, and a general freshness pervades to make a round of golf a real enjoyment.

Two Eighteen-Hole Courses

Located at Lake and Shermer avenues, on the west edge of the village of Glenview, it covers 325 acres. Two courses of 18 holes each are maintained, the one more difficult than the other. The first, the south course, measures 6,595 yards and is trapped and turfed like that of the average private club. This course is not difficult to the player who shoots under 100. The north course, however, is built as a real test of golf and to



This airplane view shows the water hazards at the eighteenth hole of each course and gives a good idea of its well-trapped, turfed and varied character. There are other water hazards on the courses.

attract the player who shoots under 90. It measures 6,710 yards. Its builders assert that it is more difficult than any other course in the Chicago district except two which are known as the ultra extreme or professional type courses.

Par on the harder, the north, course is 72. For the out nine, which measures 3,455 yards, par is 37, and for the in nine, measuring 3,255 yards, perfect figures are 35. Long and short holes are well placed and evenly balanced. With ten par 4's there are four par 5's and as many par 3's. The in nine, while shorter, has more hazards than the first nine, including two water holes, the thirteenth and eighteenth. The first of these is a 140-yard shot over the pond placed directly in front of the green.

A Test for Any Professional

The water hazard on the eighteenth is in a similar position and is enough of a test for any professional, coming at the green of a 600 yard hole which starts in a dog-leg with the bend at 200 yards.

Cards show the great variety in length on the various holes. That fact might be taken for granted, but analysis shows that special effort has been made on Pickwick in building the course to draw out a real game of golf from a player. Traveling either of the two eighteens requires playing with more than two sticks as the opportunities for all kinds of strokes are numerous. All the par 4's require two full shots, a wood and an iron, and some require two wooden shots to reach the green.

Pickwick Short Auto Drive for the North Shore Golf Players

Pickwick is just a few minutes drive from the north shore towns and busses connect it with nearby railway stations. Autoists will take the most convenient road to Glenview and then west on the Glenview road to Shermer avenue, on the western edge of the village. Pickwick is one block north.

Busses from the club meet trains at the Glenview station of the Chicago Milwaukee & St. Paul road and the Glenayre station of the Chicago Milwaukee Electric Skokie Valley line.

Three Starting Tees at Pickwick Speed Players

Operating three starting tees at Pickwick expedites the handling of crowds Saturdays and Sundays especially and avoids congestion. All starting times are reserved and the foursomes leave the tees at intervals of four and five minutes on the two courses.

This year, the second of the existence of the course, has seen an average of between 700 and 900 players using the two eighteens each weekend.

TWO PUTTING CLOCKS

For acquiring that "touch" which decides so many championships, Pickwick provides two eighteen-hole putting clocks.

PLAYER GETS CHANCE TO LEARN REAL GAME

Ideal Surroundings Prepare Him for Using the Finest Courses

The player on Pickwick enjoys advantages which are not offered by publicly owned fee courses within reach of the north shore. He learns to play a game of real golf, such as is his ambition if he ever joins a private golf club. He gets the benefit of the open, uncrowded spaces of the quiet countryside, which are denied him on most cramped, congested public courses. And though he pays a slightly higher fee, his actual expense is quite certain to be less.

At Pickwick have been developed the best facilities for learning the game.

If the golfer expects to join a private club it is advisable for him to learn the game at Pickwick. He will thus not only learn the rules and actual conditions of the game, but he will have experience on a course that is as well designed and perhaps more difficultly trapped than the club he will eventually join.

The small added cost of playing on Pickwick is more than offset by the advantage of playing a game of real golf in ideal surroundings. In just the one item of golf balls the saving is greater than the fee. There are no ditches, rivers, canals or tangled roughs in which to lose \$1.50 to \$3 worth of balls in a round of play. The Pickwick player has the assurance that his ball will not easily be lost. The rough is rough, but it is well kept and always clean. Water hazards also have part of their danger subtracted, because caddies are present to retrieve balls landing in them.

Many North Shore Clubs Play the Pickwick Course

Several large clubs and trade organizations of Chicago and the north shore have recognized the caliber of the Pickwick course and are making use of it for their tournaments.

Kiwanians of Evanston are among its most enthusiastic users, assembling there in a golf day for the entire playing membership once a month and engaging in many practice rounds. The Evanston Commercial league also play their matches at Pickwick.

SPECIAL VACATION RATES

Pickwick's week day rate is \$1.50, but it is now offering special vacation rates for men, women and juniors. **Ten-play tickets are obtainable for men at \$10, and for women and juniors at \$7.50.**



Clumps of trees, rolling stretches of velvet turf, water and sand hazards abound at Pickwick, as may be seen from the above picture. (Advertisement)

1	2	3	4	5
PICKWICK GOLF CLUB				
GLENVIEW — ILLINOIS				
Year - 1928				
WOMEN AND JUNIOR				
Week Day Golf Card				
This individual privilege card entitles				
To ten rounds of week day golf subject to club regulations. Not valid on Saturdays, Sundays or Holidays.				
6	7	8	9	10

This ticket entitles the holder to ten rounds of golf at a special vacation rate.