

### Equasonne Seen as Revolution in Radio Circuit

Details of the revolutionary new Equasonne radio circuit, the first public announcement of which was made on June 9, were explained locally for the first time this week by Marcus W. Hinson of Radio Service Installation, Wilmette, who attended the convention of radio men at Jackson, Mich., where the new circuit was presented.

According to Mr. Hinson, the new Equasonne circuit is a radical advance in radio science—as radical a change as that which marked the introduction of AC sets two years ago. The discoveries which made this circuit possible represent a triumph for the research activities of the independent radio industry. It was developed by The Sparks-Withington company, the largest independent radio manufacturers in the United States, in co-operation with Lester Jones, well-known radio expert of New York.

The circuit promises a revolution in radio broadcast transmission for it makes the lower wave lengths of the broadcast band equally valuable with the higher channels—a fact that may induce the Federal Radio Commission to scatter the “cleared channels” over the entire dial instead of limiting them to the upper half and using the lower half as a “dumping ground.” At present there are only 250 broadcasting stations between 550 and 1,000 kilocycles and there are 500 stations between 1,010 and 1,500 kilocycles. In addition to the remarkable uniformity in its selectivity throughout the broadcasting wave band, there is a complete elimination in this set of all balancing or neutralizing elements. The usual intermediate stage of audio amplification is also eliminated. A 25-watt power tube may be operated direct from the detector. This is possible because a maximum undistorted amplification of 15,000 is obtained in the radio amplifier.

All the selecting is done direct from the antenna. The impulse passes through a single dial detector unit which allows a band of 10 kilocycles to pass. No tubes are employed in this new “band pass filter” selector. As radio listeners are aware, existing types of sets suffer much variation in selectivity tuning more broadly at short wave lengths than in the long wave lengths of the upper portion of the dial. As a result, in such sets, it becomes almost impossible to receive distance stations below 250 meters without much interference and background of noise.

The new device selects so accurately

that this noise and interference is eliminated as completely in the short wave lengths as in the long. It makes the set a pre-selective one for all the tuning is done before there is any amplification at all. No impulse from adjoining channels is admitted into the amplifier or detector units with the idea of filtering it out at a later stage of the process.

The amplifier unit is as revolutionary in its operation as the selector units. With 6 tubes, one of them operating as a detector tube, it amplifies the impulse received 15,000 times—instead of the usual 5,000 times. Even the most sensitive of present-day sets rarely go above 8,000. This amplifier is unique in that it automatically tunes itself to the incoming frequency no matter what the wave length.

The Equasonne circuit exhibits absolutely no tendency to oscillate. The necessity for balancing or neutralizing condensers is therefore eliminated.

### Dr. M. H. Bickham Goes to Big “Y” Conference

Student religious leaders from more than one hundred colleges and universities in the Middle West are assembled for a nine-day conference at the Y. M. C. A. grounds, Lake Geneva, Wis., which opened June 12. The conference includes such well-known speakers and workers among students as Dr. Charles W. Gilkey of Chicago, Dr. Sherwood Eddy of New York, Dr. Bruce Curry of Oberlin college, Dr. Jerome Davis of Yale university, and Dr. Martin H. Bickham of Wilmette.

According to announcements the conference aims to give students who are working at various activities on the different campuses an opportunity to examine, evaluate and re-shape these activities from the point of view of what is most meaningful, creative and Christian.

Dr. Bickham left Monday to head a section of the conference which deals directly with the search for better ways of meeting student life-situations. For the past year and a half Dr. Bickham has been studying student life intimately. He is director of research of the Committee on Social Analysis of College Communities and author of “Student Service Projects.”

Mr. and Mrs. William Happ, 888 Elm street, announce the marriage of their daughter, Ruth E. Madson, to Harvey E. Young of Chicago. The marriage took place last Saturday evening at 8 o'clock at the study of the Rev. James A. Richards. Miss Eleanor King of Chicago was the only attendant of the bride and E. Fink of Wauconda was the best man. The young couple will live in Wilmette.

Boys — Girls — Ladies

## LEARN TO SWIM AND DIVE!

### New Trier High School Natatorium

June 18 to August 10

Classes for beginners and for swimmers  
Special Instruction for those who need it

For information call Mr. Jackson daytime—Winnetka 2400.  
Evenings University 6448



## An Enjoyable Summer

and one that can be long remembered because it brought not only a happy, healthful change from the usual year's work but it held the thrill of achievement.

This is the opportunity that is offered this summer by the EVANSTON ACADEMY OF FINE ARTS. One who has never tried to paint the beauty of a scene cannot appreciate the charm it holds. All of life may become richer through the experience of a short season spent in our summer classes.

Imagine the charm of a beautiful garden, made yours because you have painted it and then to know that you have learned new things of quality and real worth!

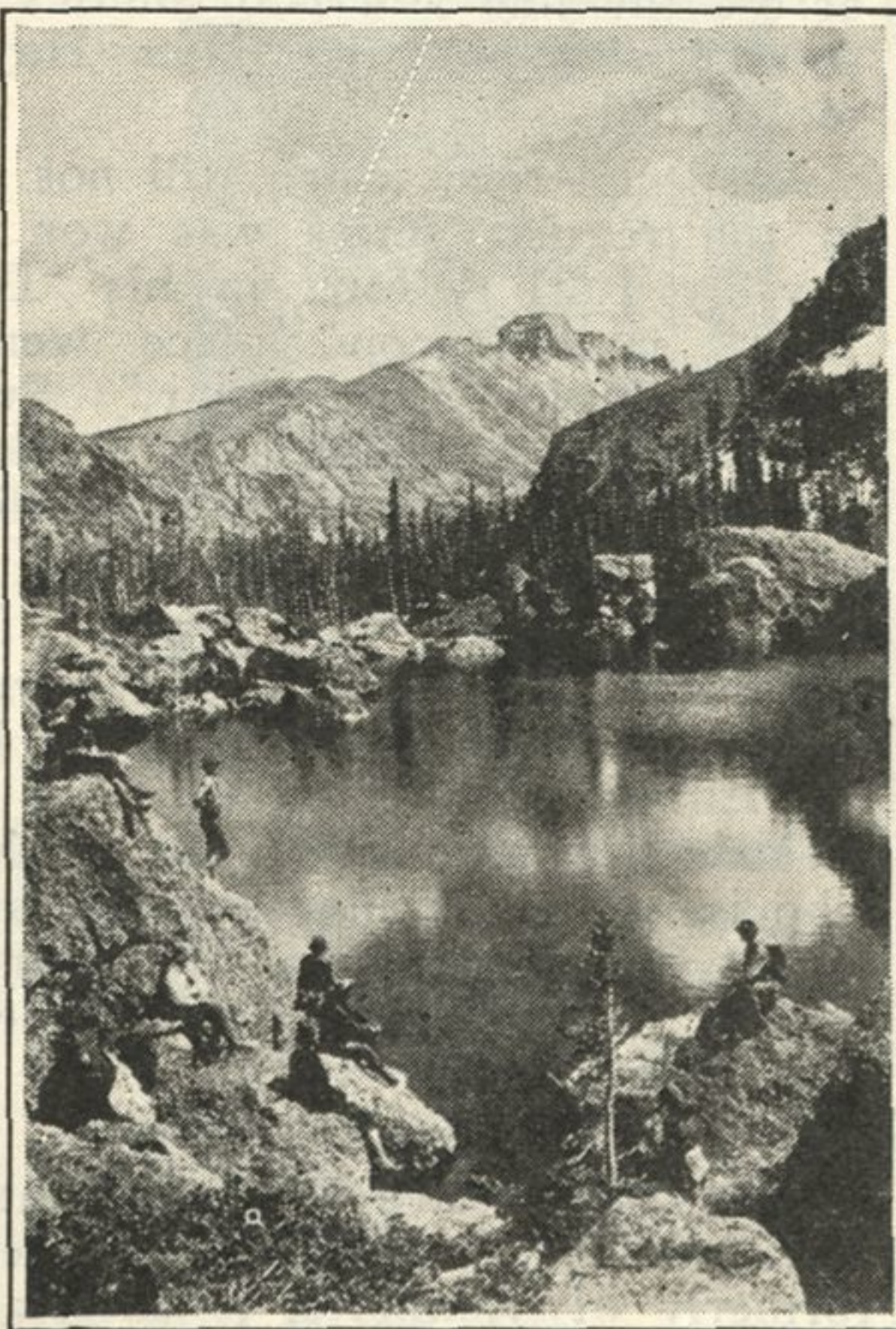
Summer School Begins July 9—Evening School 7:30-9:30

## THE EVANSTON ACADEMY OF FINE ARTS

CARL SCHEFFLER, Director

Carlson Building Tower, Church and Orrington

Telephone Greenleaf 1674



Bear Lake

### Enjoy a Summer Vacation in the

## HIGHEST OF THE ROCKIES

FERN LODGE & BEAR LAKE LODGE offer you, clean, rustic log cabins completely furnished with comfortable beds, an abundance of warm blankets, and fire wood for the cool mountain evenings. Horse back riding, trail trips, fishing, boating, cards, and dancing.

FRONT RANGE LODGES, Inc.  
Box B—Estes Park, Colo.