

'Practical Man'



Richard T. Ely, director of the institute for research in land economics and public utilities at Northwestern, will give the next lecture in the Contemporary Thought series, speaking Wednesday at 2 in Commerce hall on the Evanston campus and at 7 in Wieboldt hall, McKinlock campus. His subject will be the "Practical Man."

"The union of the practical with the ideal gives the basis for the good life which must be fruitful individually and socially," states Prof. Ely. "Those who confine themselves merely to the economic side of life are materialists. Those who neglect the economic in their aspirations are Utopians."

"We live on the earth. Our bodies are composed of material elements and are a part of the world. They form the basis of all higher activities. The problem of life is to induce the spiritual to grow out of the practical."

Golfers Turn Out to Play Revamped Illinois Course

Although the weather has been chilly it hasn't effected the ardor of the members of the Illinois Golf club just west of Glencoe, as was evidenced by the fact that more than fifty players, many of them of the fair sex, pulled out their golfing implements last Sunday and did a round of the course. They found the course in fine condition, the putting greens in particular being velvety. The course never has been in such good shape at the start of a season.

The course is slightly changed from last year and this revamping was one of the reasons for the appearance of so many players last Sunday. Al Espinosa, the club professional who had a mighty sporty links last year has lengthened three of the holes, number four, six and seven, by utilizing the special tees built for the district championship of the P. G. A. last summer. The changes add 125 yards to the length of the course, but par is to remain unchanged at 71.

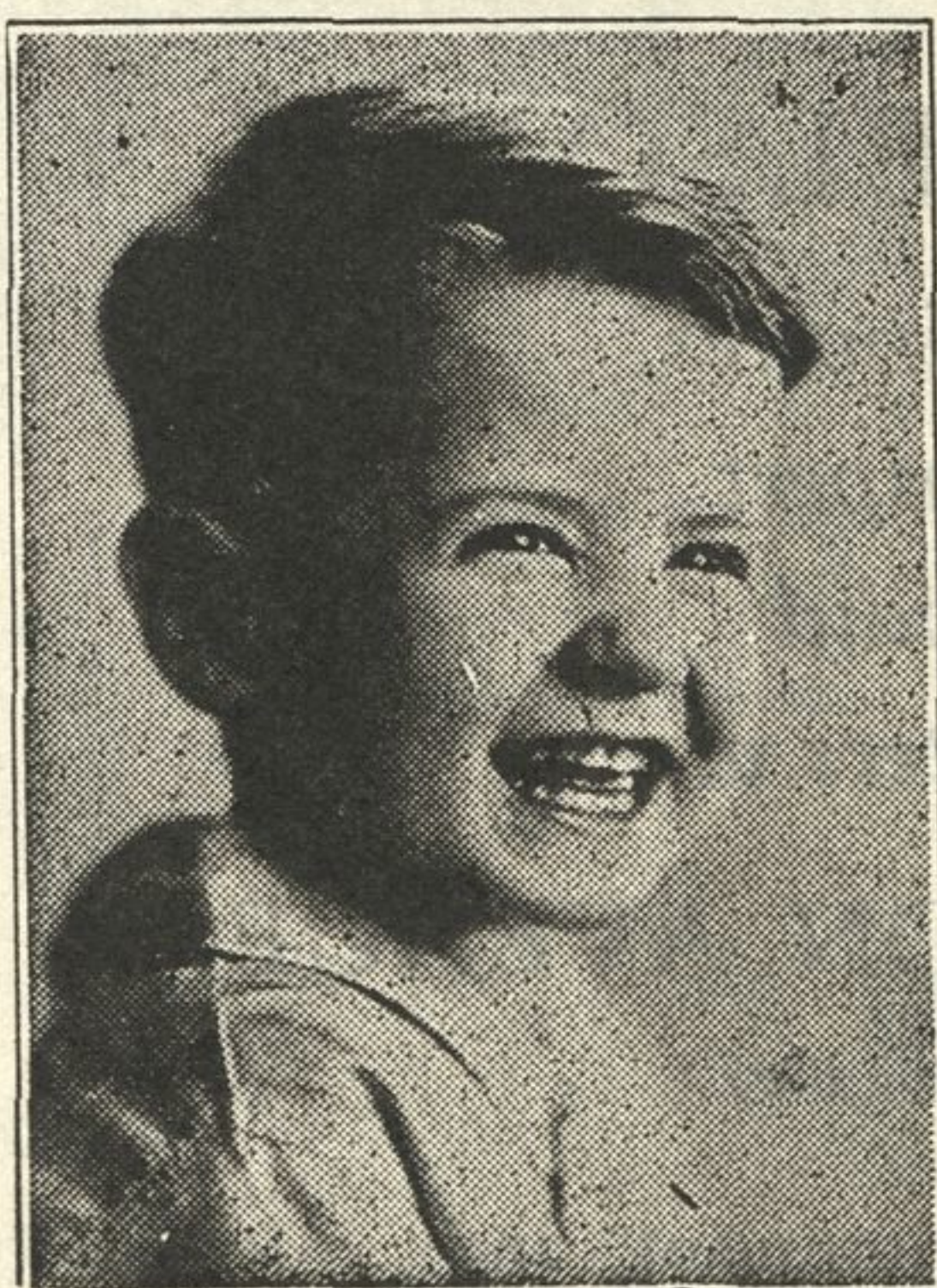
Eleven of the holes are now "dog-leg," which gives a greater variety and provides new thrills for the shooters.

Hold Benefit Saturday for Phi Beta Cottage

For benefit of Phi Beta cottage at the MacDowell colony at Peterboro, N. H., alumnae of Alpha chapter, Phi Beta, national professional fraternity of music and dramatic art, will give a card party Saturday afternoon at the Woman's club.

Mrs. Walker P. Eastman is chairman of the venture and is being assisted by Mrs. Samuel Buck, Mrs. Paul Morrison, Mrs. W. Van Gathany and Mrs. J. Sorsen.

CHANGE IN TRAIN SERVICE CHICAGO & NORTH WESTERN RY.
Important change of schedules of certain trains will become effective Sunday, April 29th. For particulars apply to Ticket Agent.



After May 1

we will be in our new studio

1623 Sherman Ave.

(Opposite Postoffice)

BERNIE'S STUDIO

Moving from 1623 Orrington to 1623 Sherman.

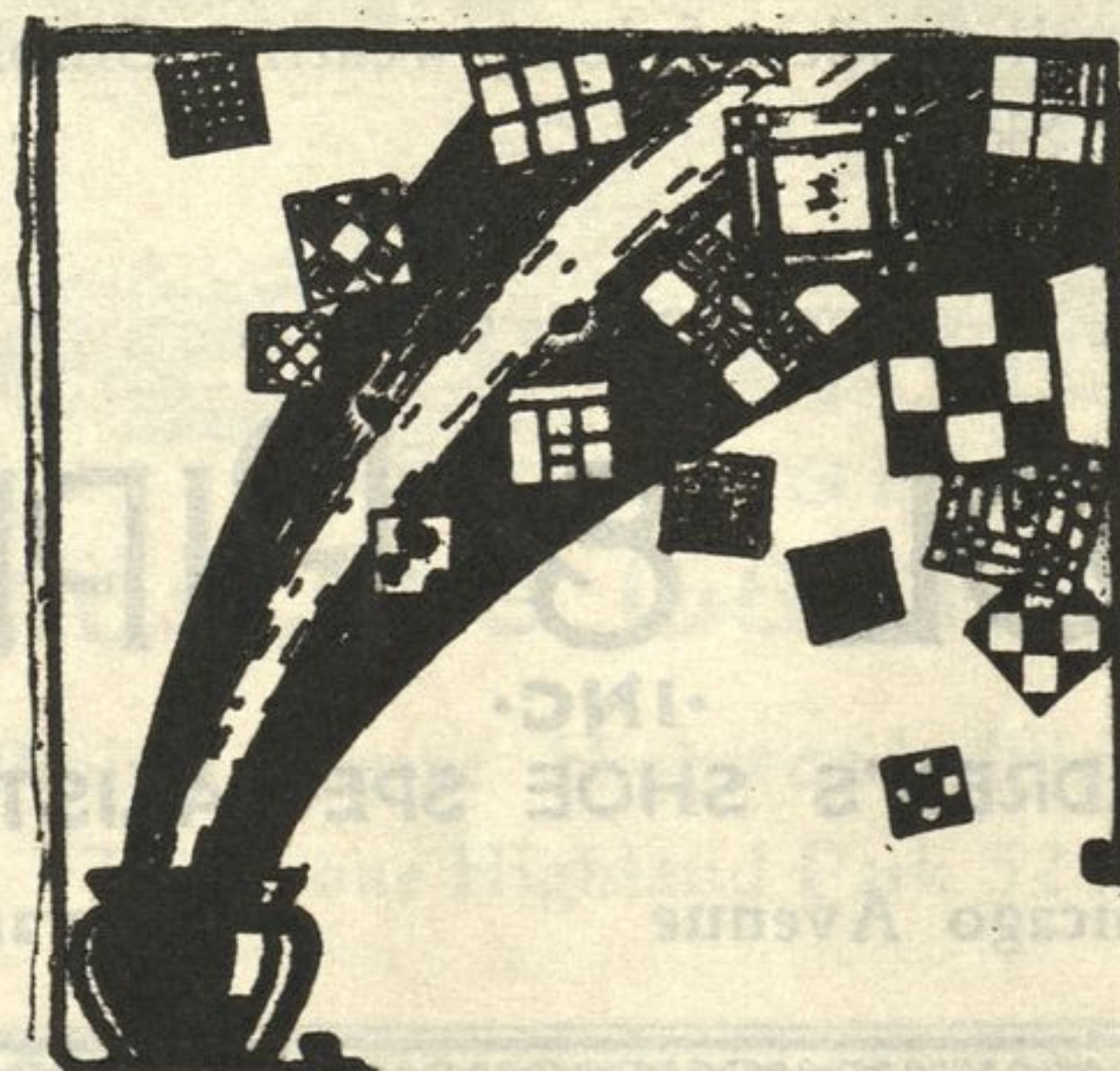
Tel. University 8998

Armstrong's LINOLEUM

Inexpensive!

Modern!

Practical!



Linoleum adds color and charm to any room

Phone

Greenleaf 1941

Our representative will gladly help you select floors of Linoleum that will harmonize with your furnishings

FLOOR-O-LEUM CARPET COMPANY

1007 Davis St.

Evanston, Ill.