

AUTO SHOW FEATURES MAMMOTH N. U. CIRCUS

Sororities and Fraternities Arrange for Most Thrilling Spectacle in History

With over fifteen different makes of autos entered, the first annual auto show ever to be staged on the north shore will open Friday, April 27, when the "Big Tent" of the Greater Northwestern university circus opens its flaps.

Among these cars will be included the Auburn, Buick, Cadillac, Chandler, Chrysler, Hudson, Nash, Packard, Paige, Marmon, and the Franklin. Several other makes are expected to apply for space within the next few days.

Sororities and fraternities are rounding their respective stunts into shape for the opening performance Friday evening. For these, three rings will be provided, the best stunts appearing in the center ring. Cups will be awarded to those organizations giving the best performances.

Three-Mile Parade

A mammoth three-mile parade will take place Saturday morning, April 28, when the fraternities and sororities, as well as other organizations, will compete for cups.

Plans are already nearing completion for the water circus, which will be held in Patten pool Saturday afternoon. National collegiate and Olympic champions, including the names of Laufer, Lackie, Breyer, Howell, Hinch, and many others, will be present to lend class to the event. Two performances will be given, one at 3 p. m., and another at 4 p. m.

Mammoth Circus Dance

Arrangements for staging the biggest circus dance ever given have been completed. This annual affair which winds up the week-end, will be held in Patten gym on Saturday evening following the main performances in the "Big Tent." Samuels' Society Synopators, prominent campus band, will furnish the music. Professional vaudeville acts will be given between dances. Winners in the various events of the circus will be awarded their prizes by John Mitchell and Ruth Finn, Circus Solly and Sally.

Over 300 costumes have been ordered by the costumes committee, in charge of Vesper Getman. These will compose the regalia to be worn by the many participants in the main performance.

Tickets Now on Sale

Tickets for the "Big Show" are already on sale at Chandler's, in Evanston, as well as several other places. This announcement has been made by Walter Kolbe, business manager.

Alpha Phi Benefit at Evanston on April 21

Saturday, April 21, is the day, and the Evanston Country club the place, of the benefit bridge party the Alumnae chapter of the Alpha Phi sorority of Northwestern university is giving at 2 o'clock, for the purpose of swelling its house fund. One of the attractive features of the affair will be a display of the newest in spring apparel from the N. A. Hanna and company shop by members of the active chapter of Alpha Phi.

Mrs. Louis E. Tilden of Evanston and Miss Elizabeth Cutler of Wilmette are co-chairmen for the affair. The day and the place are particularly emphasized as it is announced that some misunderstanding has been current as to both. Saturday, April 21, is the time, the Evanston Country club, the locale.

St. John's Church

Wilmette and Park avenues, Wilmette
Herman W. Meyer, M. A., pastor
406 Prairie avenue Telephone 1396
Church telephone 3111

SERVICES

Second Sunday after Easter
9:30 A. M. Sunday school and Bible classes.
9:45 A. M. First service and sermon.
11:00 A. M. Second service and sermon.
Sermon:
Christianity and Business.

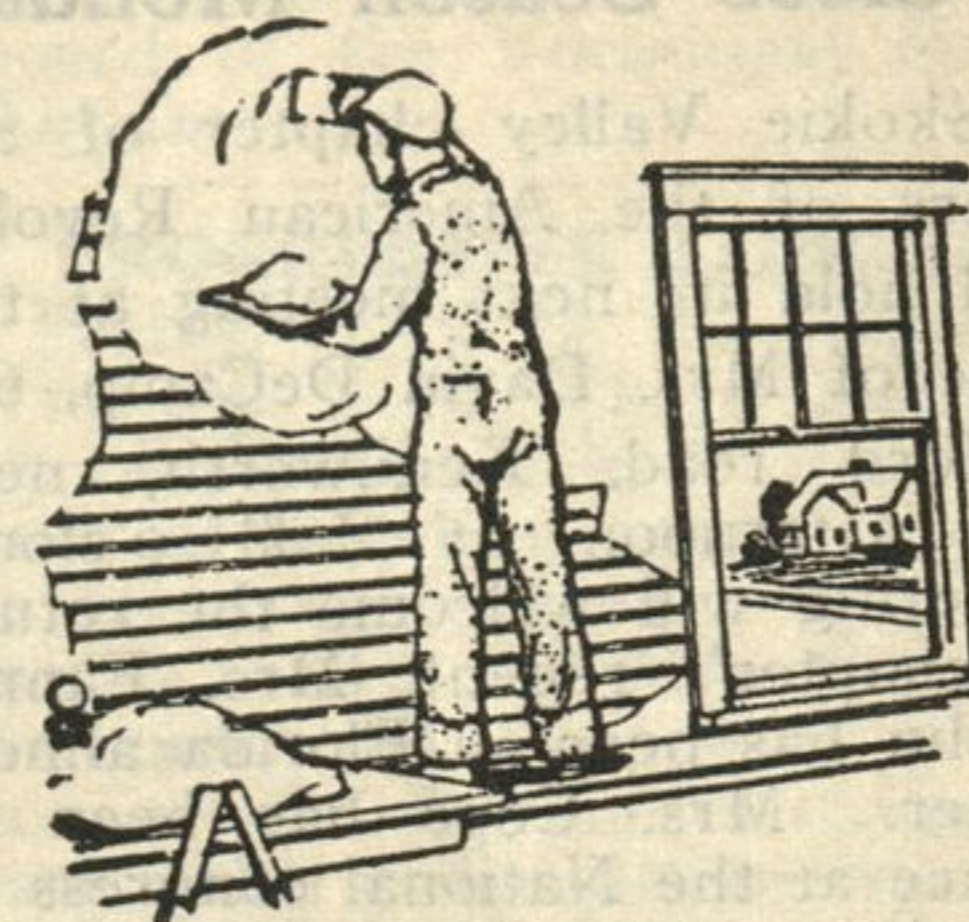
MEETINGS

Monday at 4: Classes for children, Wilmette.
Monday at 5: Classes for children, Winnetka.
Monday at 7:30: Evening classes.
Monday at 7:45: Choir rehearsal.

Tillman Knapp of 1083 Oak street recently has returned from a motor trip to St. Petersburg, Fla., where he spent two months with his daughter-in-law, Mrs. L. J. Knapp. He did not visit Cuba as he had planned.

Plastering Contractor

Plain and Ornamental
Plastering — Exterior
Stucco Work a Specialty



Chas. E. Welter

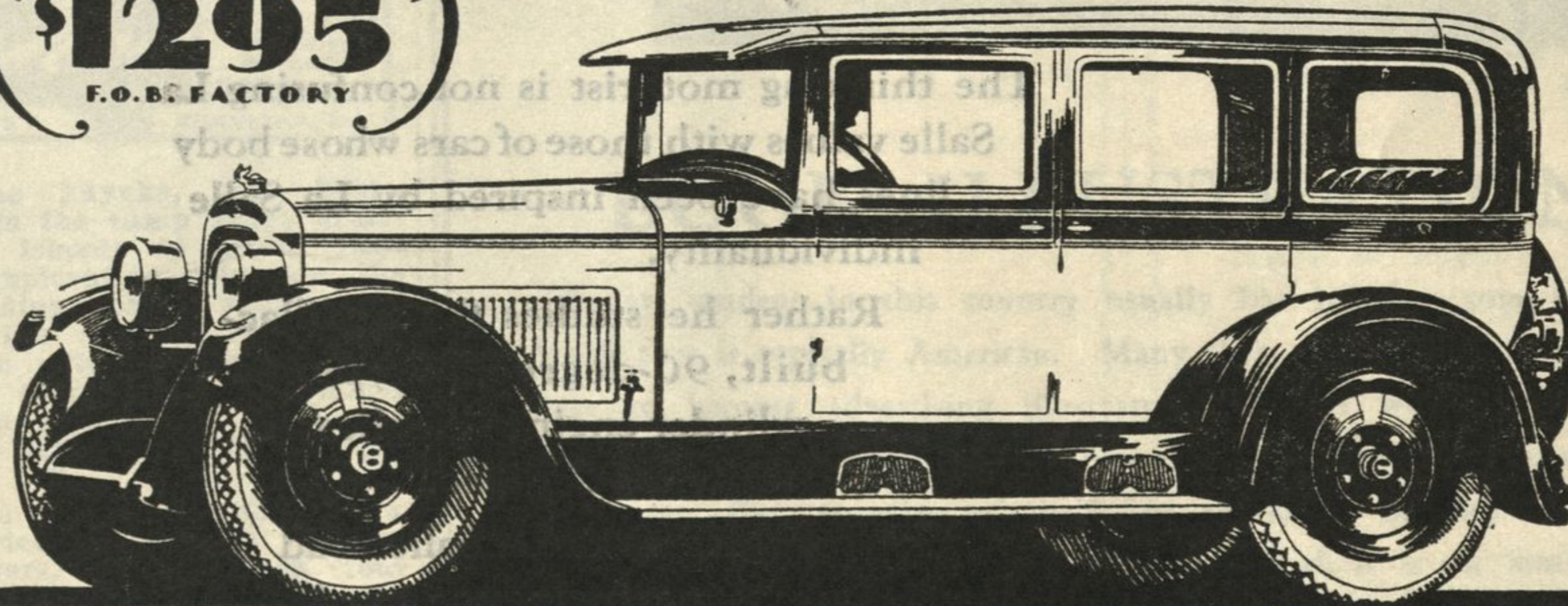
115 Fifteenth St.

Phone Wil. 2151

NASH

Take Advantage of Reduced NASH Prices

Special Six 4-door Sedan
\$1295
F. O. B. FACTORY



- and buy a finer mode of motoring

Nash is one of the great leaders in the business of building the World's motor cars, because Nash delivers finer motoring at lower cost.

This is the plain truth. It is even more apparent today than ever before, due to the recently announced Nash price reduction.

Now you can buy the fine Special Six five-passenger four-door Sedan illustrated above at a new low price—only \$1295, f. o. b. the factory. And its companion model on the Advanced Six chassis now sells at an equally attractive figure—\$1495 f. o. b. Kenosha.

See these cars and realize what amazing values they are. True fine-car atmosphere and refreshing style characterize every detail in their quality-built bodies.

Drive one of them and discover its equally pronounced superiority in performance—the surpassing smoothness and extra power of the famous Nash 7-bearing, precision balanced, 6-cylinder motor.

Either sedan may be had with six wire or six disc wheels, two of them side-carried and equipped with extra tires, at moderate extra cost.

New Reduced Prices—24 Models—\$845 to \$1990—f. o. b. factory

SUBURBAN NASH SALES

Phone Winnetka 2707

547 Lincoln Ave.

WINNETKA