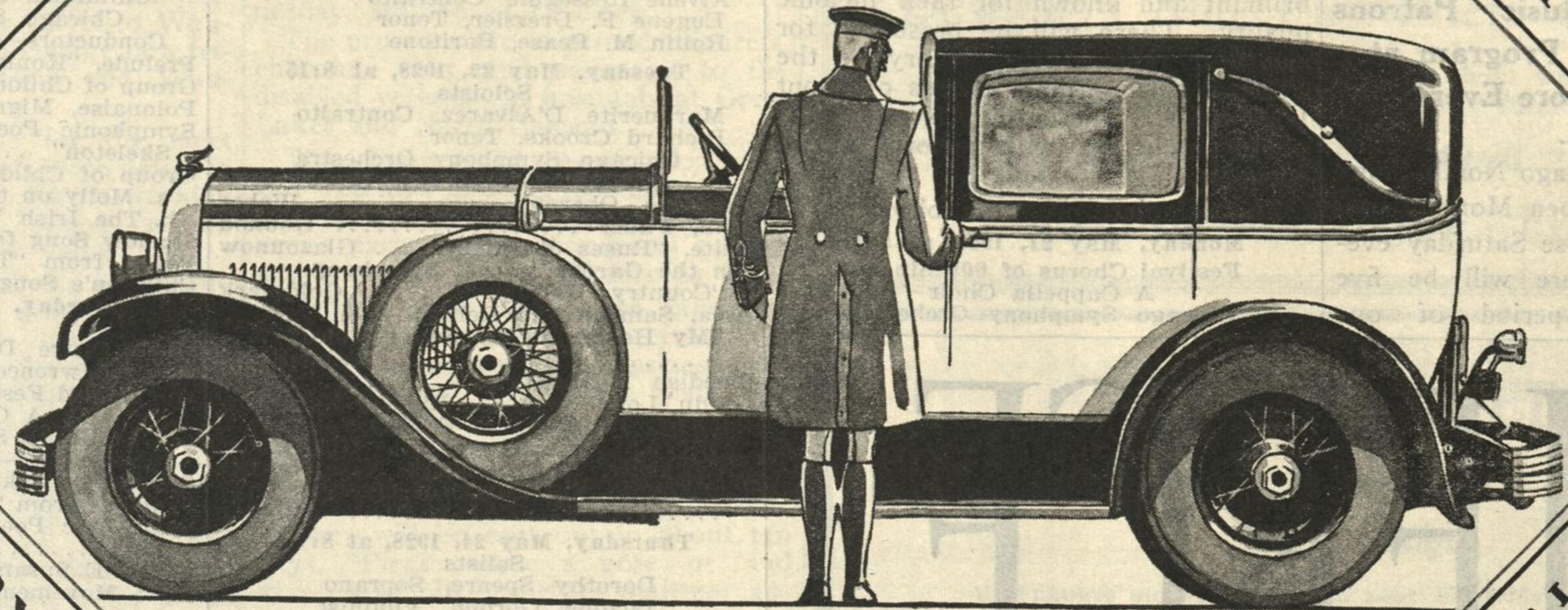


CHRYSLER

STANDARDIZED

QUALITY



NEW CHRYSLER 112 H.P. IMPERIAL "80"

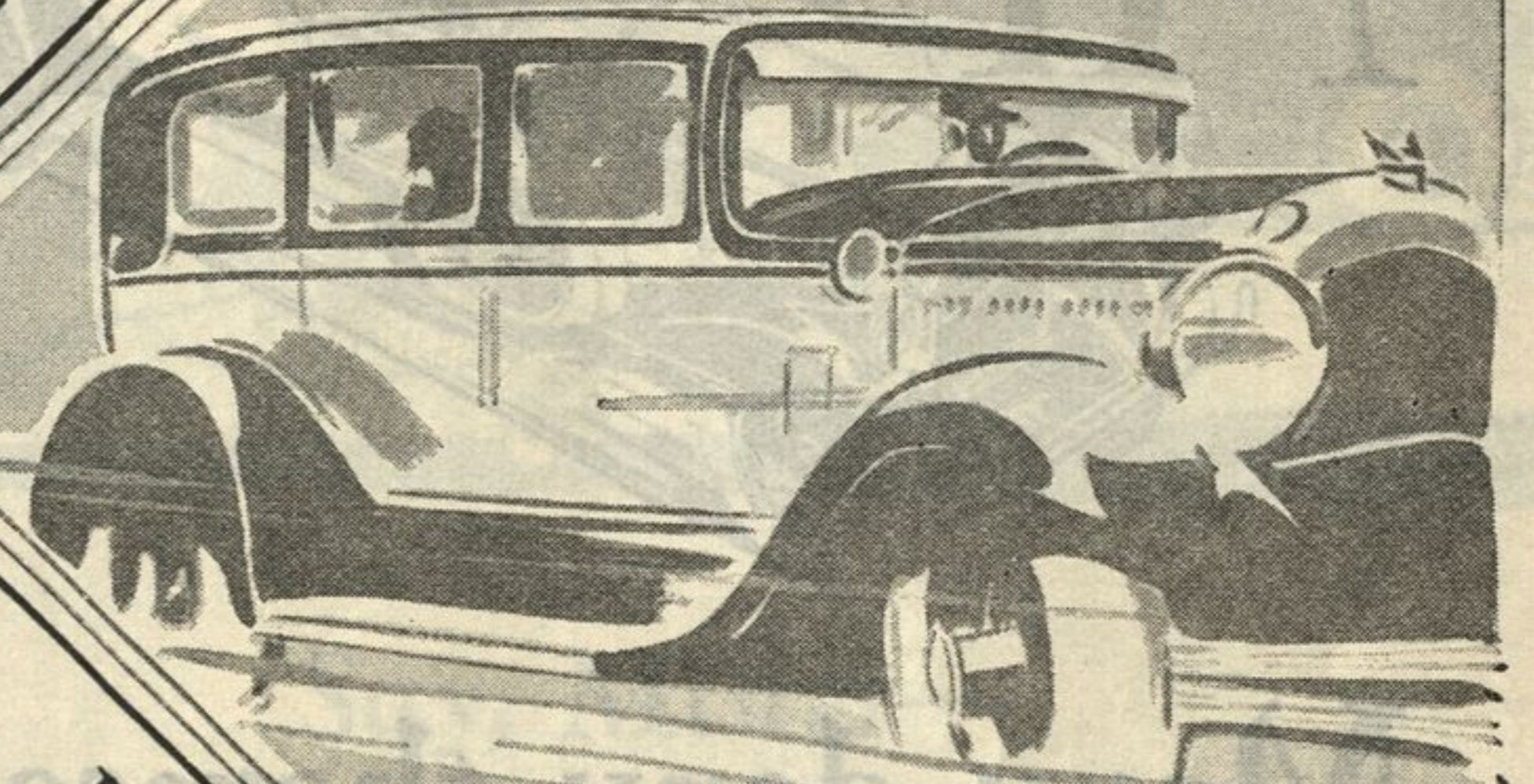
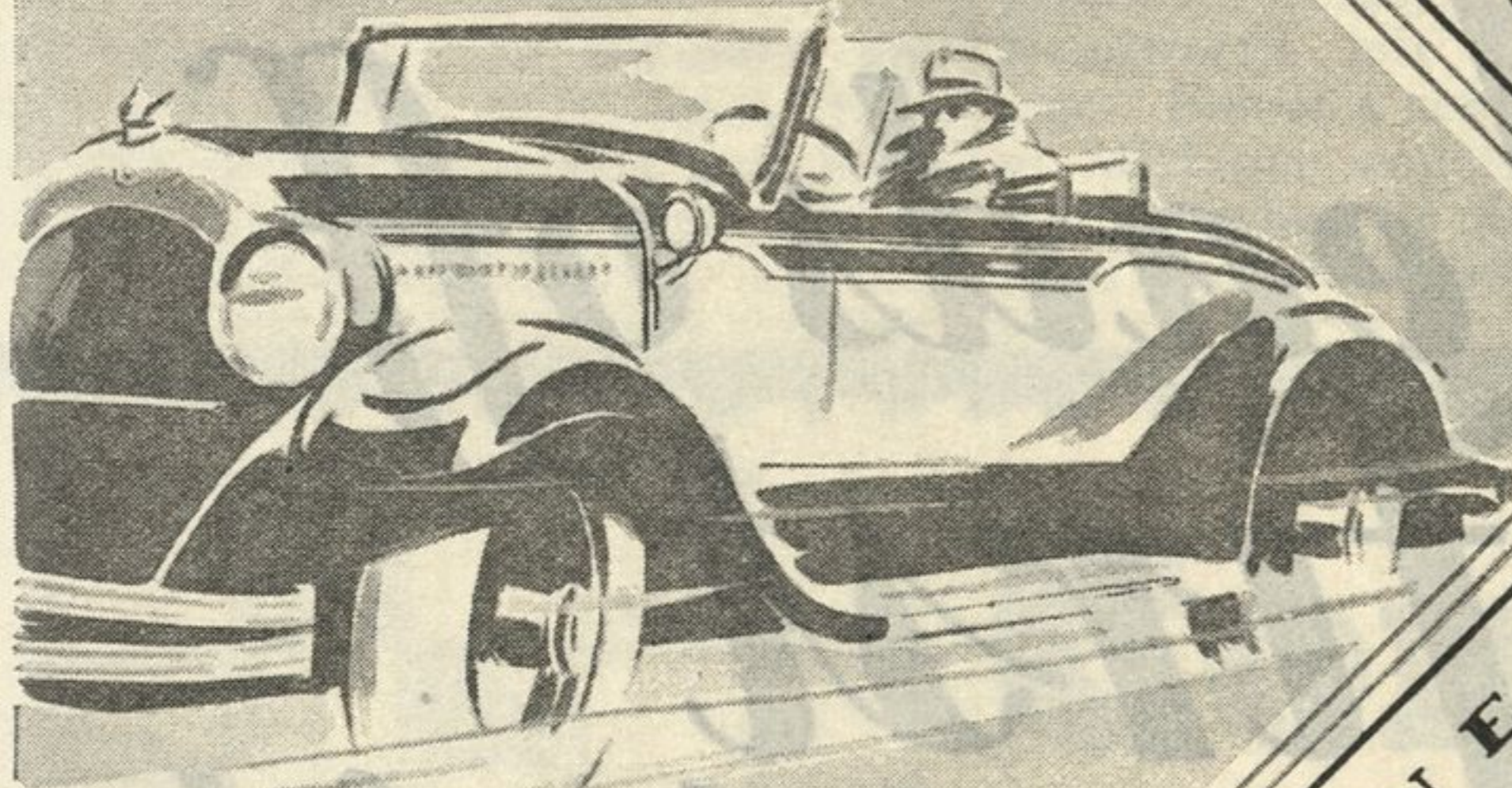
THE GREAT NEW CHRYSLER "62"

ILLUSTRIOUS NEW "72"

TOWN CABRIOLET

BODY BY LE BARON

\$3595



THE ILLUSTRIOUS NEW "72"

THE NEW CHRYSLER "52"

It is easy to understand the widespread public acceptance of Chrysler in the four great price divisions from \$670 to \$6795. Chrysler engineering, which never rests its efforts, has maintained its product as fresh and as new as it was in its very outset four years ago. This spirit of progressiveness has been responsible for the pioneering and development of every significant improvement in motor cars since the first Chrysler. And through the Chrysler plan of Standardized Quality these refinements have been passed on to all Chryslers. Thus Chrysler has set up entirely new standards of motor car value and has given new meaning to "price" and "price classes" in the industry. Chrysler cars — whether "52," "62," "72" or 112 h. p. Imperial "80" — can be compared only with other cars far above them in price. For they represent not only far more than money could buy in the past, but more than the same money will buy elsewhere today.

All prices f. o. b. Detroit, subject to current Federal excise tax

EVANSTON MOTOR SALES

1840 RIDGE AVENUE

WILMETTE 2277

PRICED FROM

\$670 TO \$6795