

### Community House Calendar

(Week of April 9, 1928)

#### Monday

- Morning:  
 9—Kindergarten  
 9—Women's Gym Class  
 9—Dancing  
 12—Dancing  
 12:30—League of Women Voters  
 Afternoon:  
 2—Rosewood Circle Party  
 3:45—Fancy Dancing  
 4—Meltzer School of Music  
 Evening:  
 6:30—Chamber of Commerce Dinner  
 7—Panthers  
 7:15—Fancy Dancing  
 8—Community Players  
 8—Modern Woodmen  
 8—Triangle Club  
 8—Business Men's Gym Class  
 8—Good Luck Club  
 8—English Class

#### Tuesday

- Morning:  
 9—Art Class  
 9—Kindergarten  
 All Day—Polls  
 All Day—Community Sewing Class  
 Afternoon:  
 4—Motion Pictures  
 3:45—Dancing  
 Evening:  
 7—Dancing  
 7:15—Motion Pictures  
 7:30—New Trier Rifle Club  
 7:30—Young Ladies' Gym Class  
 8—English Class  
 8:30—Friendship Circle

#### Wednesday

- Morning:  
 9—Kindergarten  
 9—Art Class  
 Afternoon:  
 3:45—Fancy Dancing  
 3:45—Boys' Gym Class  
 Evening:  
 8—Czecho Slovakian Club  
 8:15—Community Players

#### Thursday

- Morning:  
 9—Kindergarten  
 9—Women's Gym Class  
 9—Art Class  
 All Day—Stitch-in-Time Club  
 12—Dancing  
 12:30—North Towns Druggists' Luncheon  
 Afternoon:  
 2—Class in Applied Religion  
 2:30—Guardians' Meeting  
 3:45—Dancing  
 4—Camp Fire Girls  
 Evening:  
 7—Dancing  
 7:30—Boy Scouts  
 8:15—Community Players  
 8:30—British American Club

#### Friday

- Morning:  
 9—Kindergarten  
 9—Dancing  
 12:15—Rotary Club Luncheon  
 Afternoon:  
 4—Motion Pictures  
 4—Blue Birds  
 4—Pathfinders  
 6—Motion Pictures  
 Evening:  
 7—Fancy Dancing  
 7:30—New Trier Rifle Club  
 8—Religious Education Com.  
 8—Motion Pictures  
 8—Panthers  
 8—Young Men's Class

#### Saturday

- Morning:  
 9—Meltzer School of Music  
 9—Dancing  
 9—Camp Fire Girls' Food Sale  
 10—Dancing  
 Afternoon:  
 2—Boys' Gym Class  
 4:30—Camp Re-Union Dinner.

### Township Books Show Fine Balance for Fiscal Year

At the annual Town meeting held at Community House, Winnetka, Tuesday afternoon at 2 o'clock, annual reports were submitted by Mrs. Gertrude M. Thurston, Township supervisor and treasurer of the road and bridge fund.

Total receipts in the road and bridge fund were reported at \$68,878.69; expenditures, \$53,944.27, leaving a balance of \$14,934.42.

Receipts in the Town fund amounted to \$43,511.31. The expenditures were \$14,912.08, leaving a balance of \$28,599.23, \$25,000 of which it was voted to transfer to the road and bridge fund.

William B. Moulton presided as moderator at the meeting.

Mrs. John S. Miller, Jr., with her daughter, Judith, has gone east during the Easter holidays.

### Your Furniture!

High Grade Upholstery and Cabinet Work, including Furniture Repairs and Refinishing. Specialists in Interior Furnishings and Antiques. Mattresses Renovated and Repaired. Slip Covers Made to Order.



Phone us—let us know your needs, and we'll have the pieces back to you when your house-cleaning is completed.

### HUBBARD WOODS UPHOLSTERY Co.

Mrs. R. Halun

897 Linden Ave.

HUBBARD WOODS

Ph. Winn. 3014

# THE NASH

## 5-Passenger Sedan

on the Big Advanced Six Chassis

# only \$1425

F.O.B. FACTORY

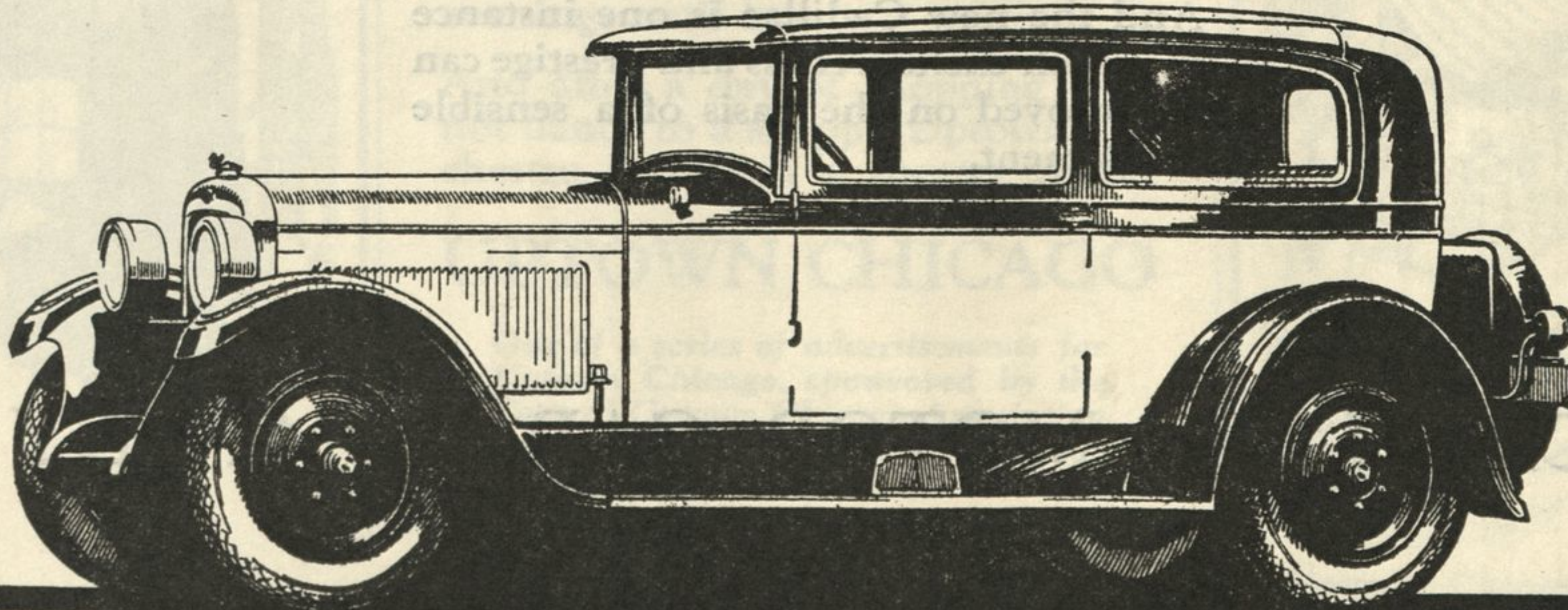
...The finest family car ever sold at so low a price

You simply cannot buy finer motoring for the money than this big, fleet-looking, smartly appointed, Nash Advanced Six Sedan for five.

It has the great advantage of Nash 7-bearing performance. It excels also in steering and riding ease. Specially designed, Nash alloy-steel springs plus shock absorbers, front and rear, add unusual comfort to your travel.

There are optional colors to suit your taste—a smart, built-in, custom trunk, trimmed with nickel straps, for style—and 5 steel disc wheels as standard equipment. (Six disc or six wire wheels, two of them side-carried and fitted with extra tires, are optional at slight extra cost.)

There's no car at its price capable of so much lasting satisfaction as this Nash Advanced Six Sedan. It's a finer mode of motoring, at a lower price!



### SUBURBAN NASH SALES

Phone Winnetka 2707

547 Lincoln Ave.

WINNETKA