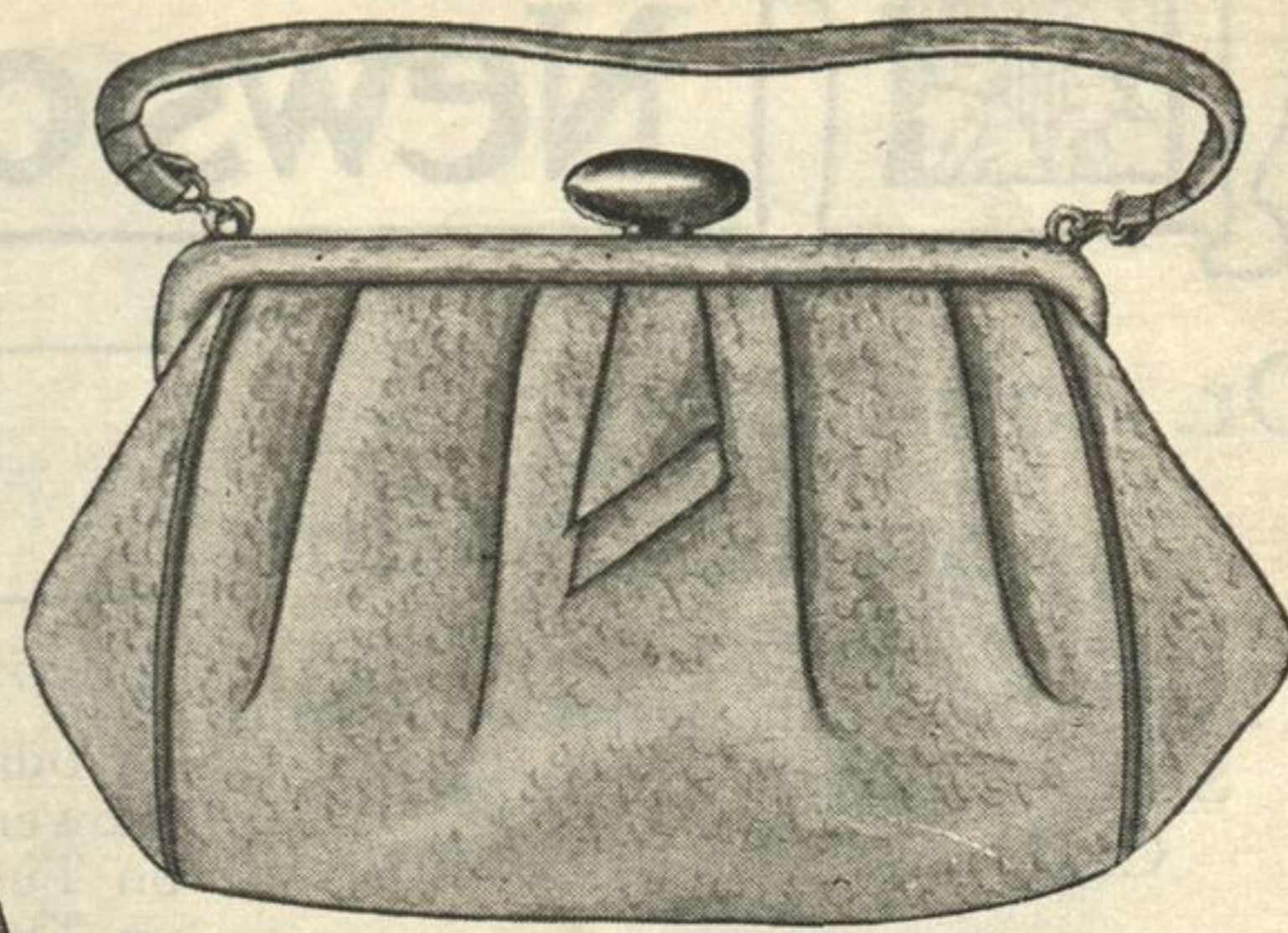


A beige slipper designed of lizard and suede showing the smartness of the two-leather, one-color mode, \$10.50.

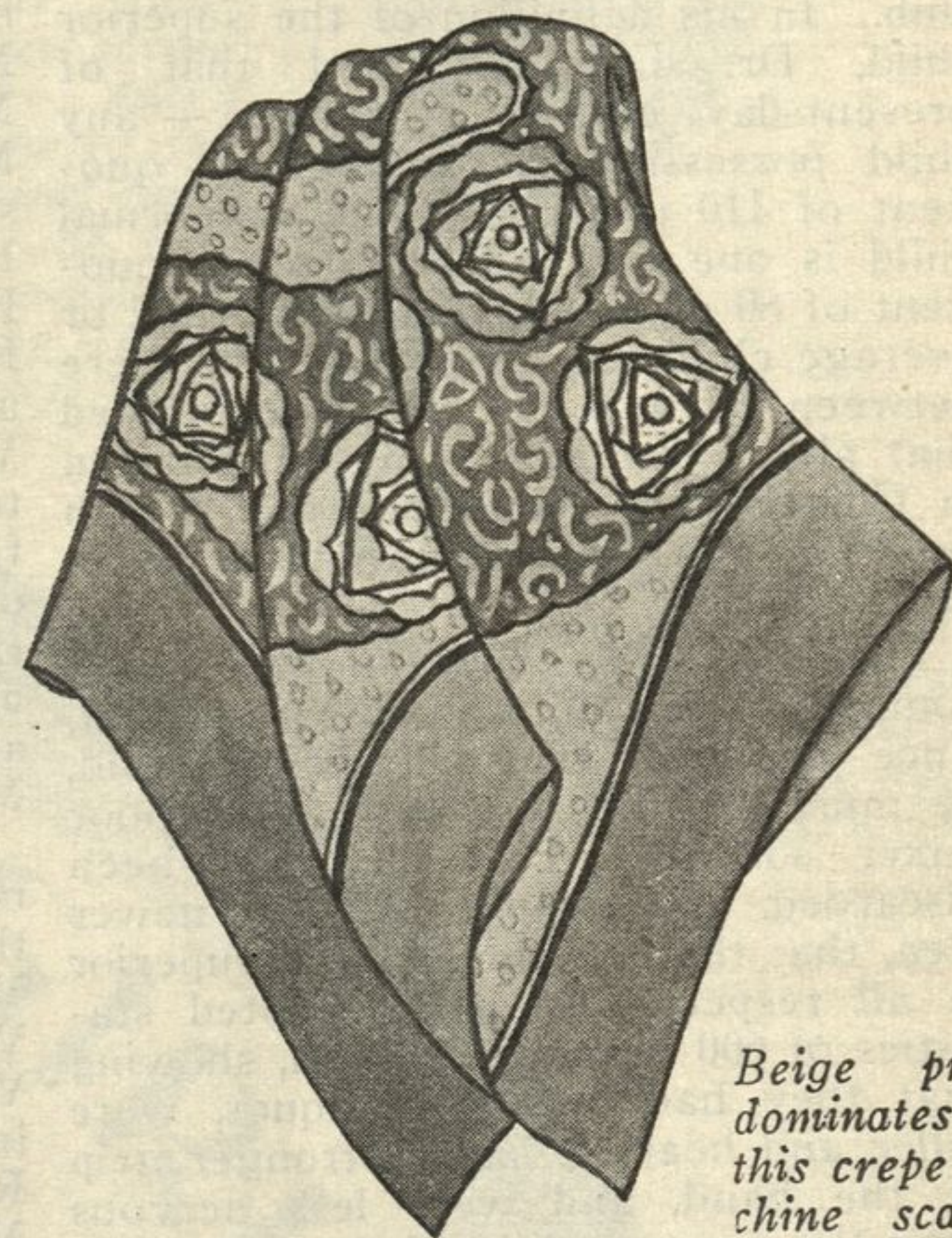
The mode for larger brims is interpreted by this hat of ballibuntl with slashed brim at back turned snugly against the crown, \$15.



This pleated purse has a unique gold clasp and diagonal cut tabs; in the smart beige shade, \$10.

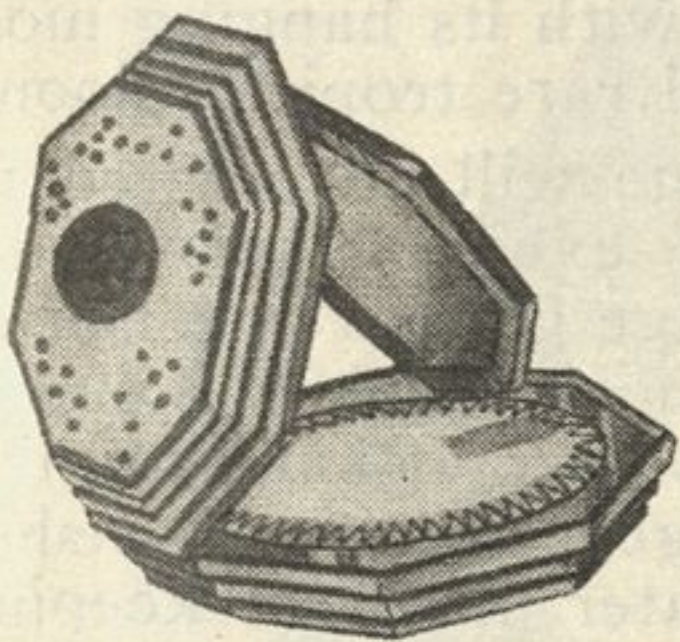


Modernistic art is found designed on this scarf of crepe de chine with deep green border, \$4.95.

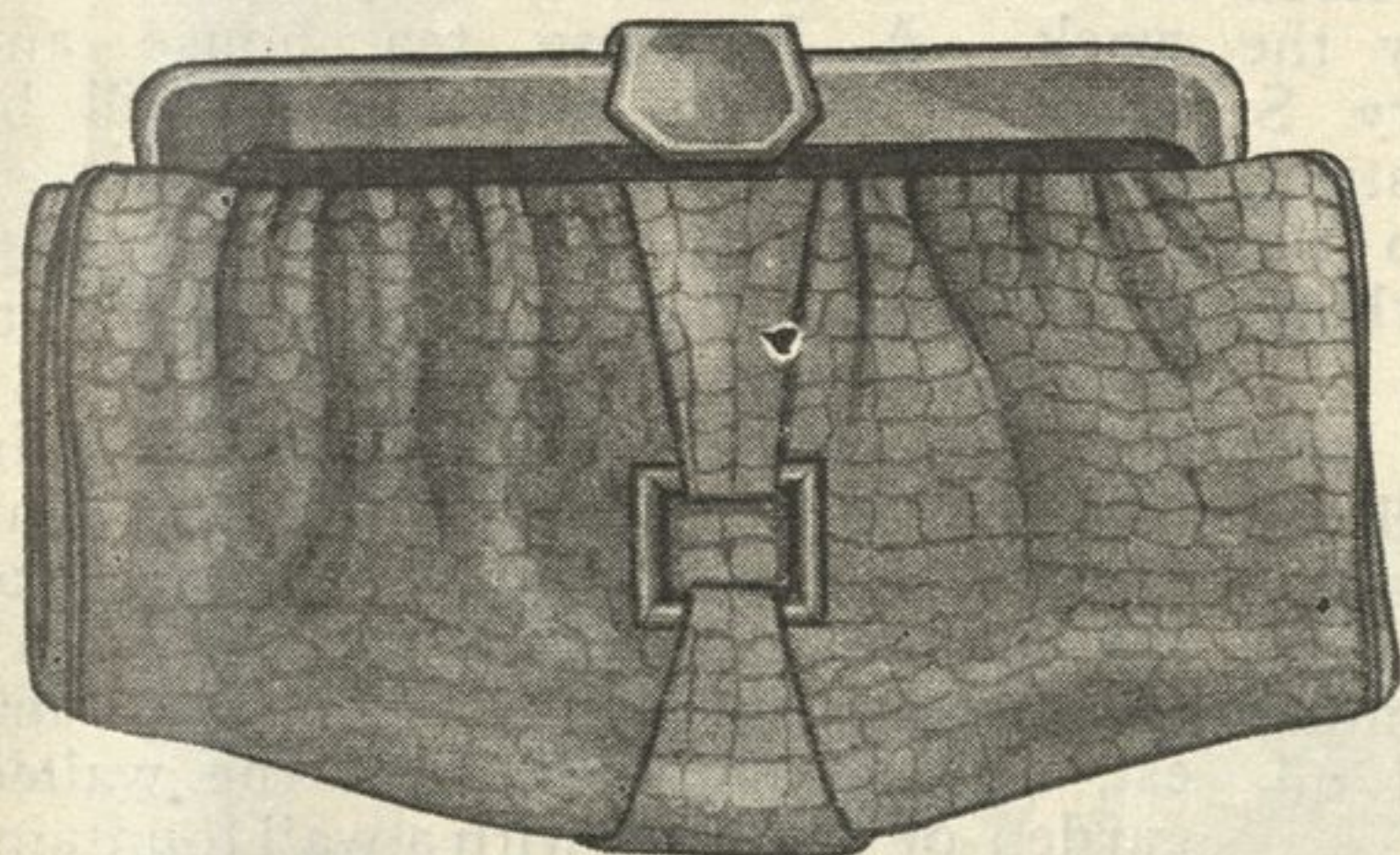


Beige predominates in this crepe de chine scarf, \$3.50.

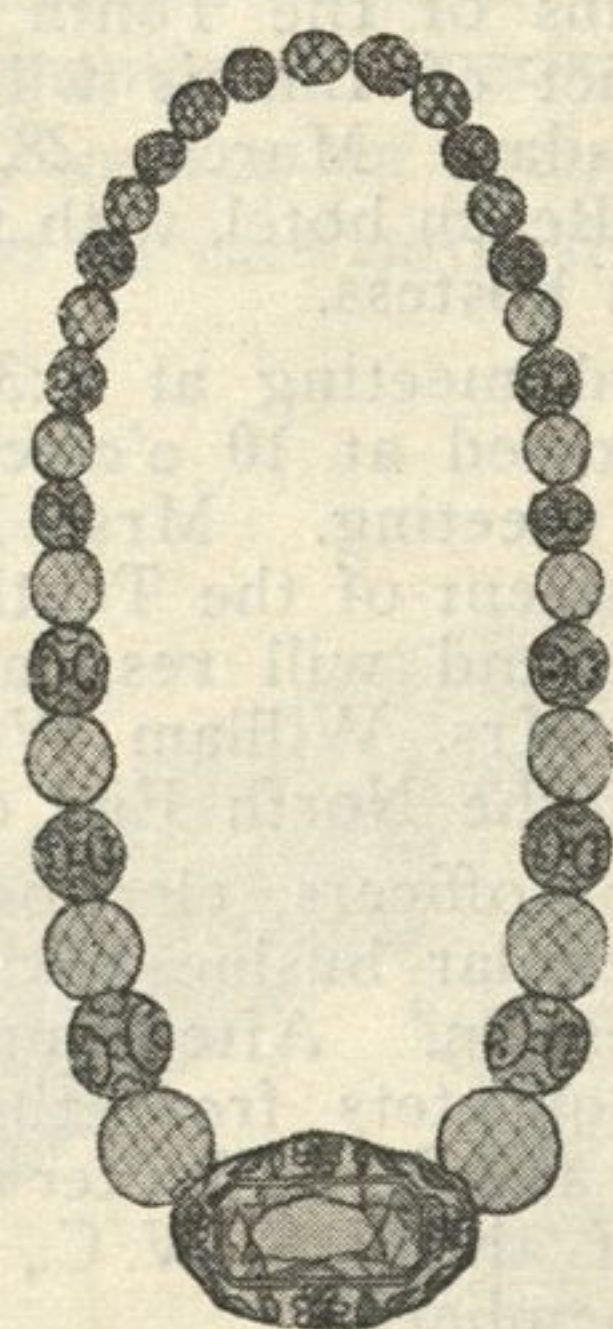
THOSE THINGS THAT MAKE THE COSTUME SO SMART



"Le Debut," a new vanity by Hudnut, in gold, \$5.00.



This alligator grained purse in beige is exceedingly smart with its amber shell frame and swing clasp, \$10.



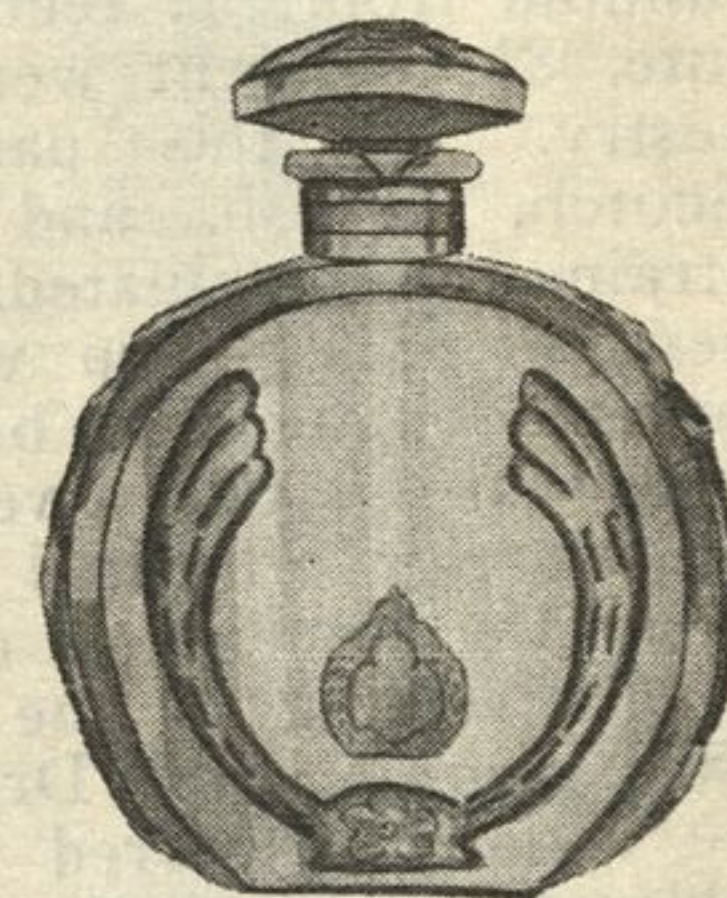
Above at left, the Rio Rita necklace of amber crystal in graduated sizes, intermingled with gold balls, \$16.



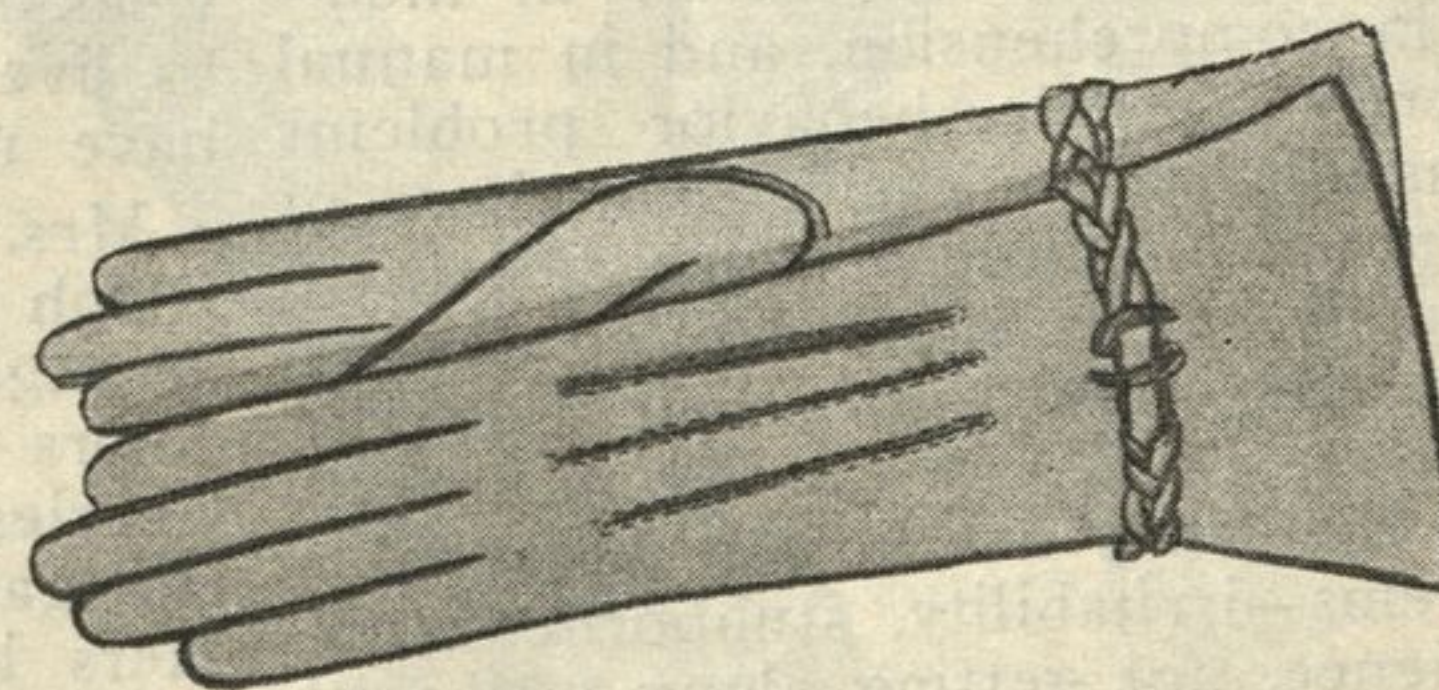
Above at right, the Minerva choker, \$4.95; with bracelet to match, \$1.25. Gold shield-shaped disks are set with amber crystals.



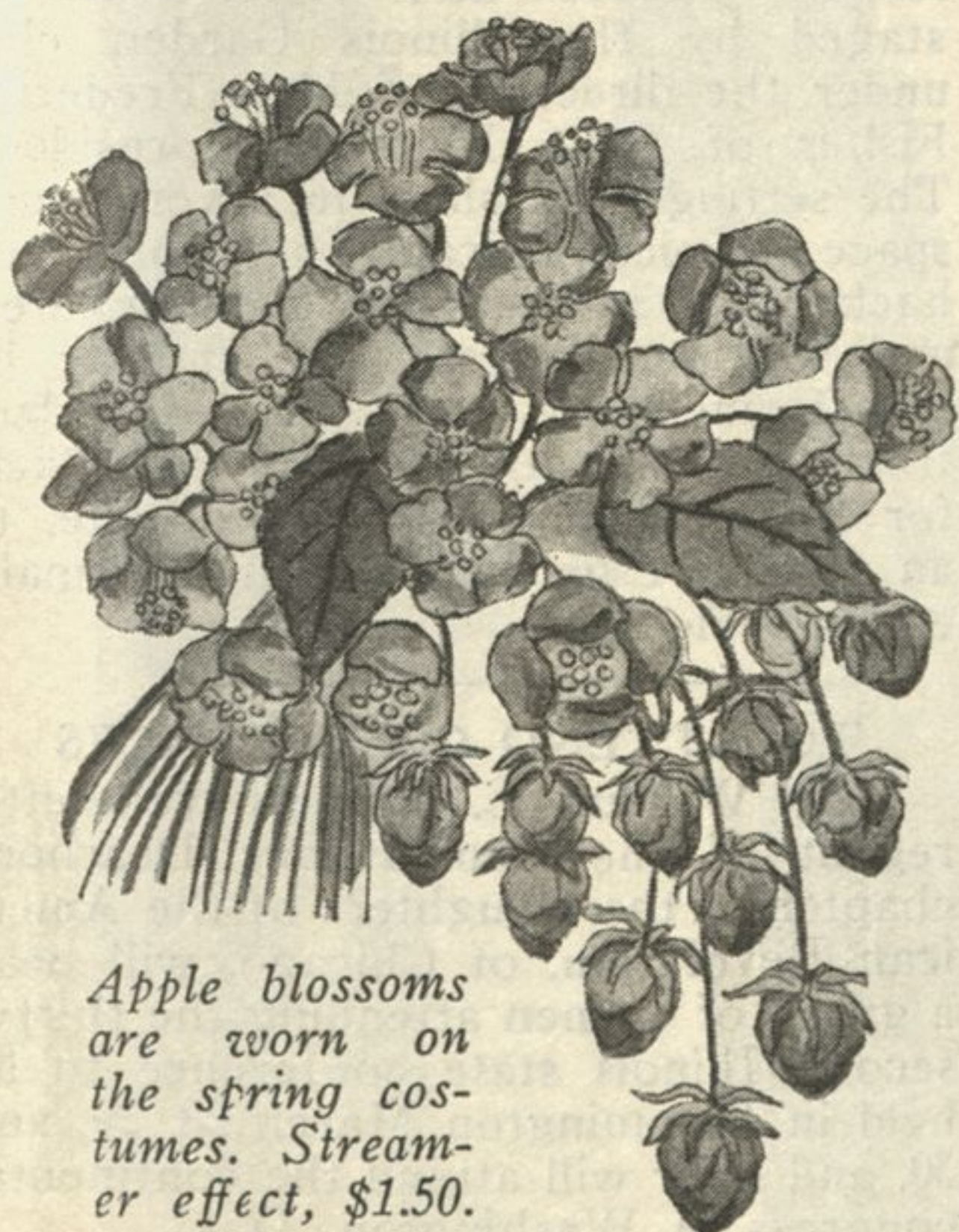
A new chiffon stocking with hem-lock run-stop and green picot edge, \$1.95.



"Un Air Embaume" by Rigaud, Paris—an enduring perfume with an unforgettable odor, \$1 to \$10.



The braided bracelet cuff is a smart note in these kid slip-ons in beige or mode shades, \$4.95.



Apple blossoms are worn on the spring costumes. Streamer effect, \$1.50.



Pictured above, center, the Scroll Belt of velvety suede leather adorned with vari-colored disks and metal beading, \$4.50.



Left a black suede belt with metal beading, \$2.25. Right, a brown suede belt with brilliant buckle, \$2.25.

A pump of lizard and suede, beige, \$12.



ROSENBERG'S DAVIS STREET - EVANSTON