

Lord's
INCORPORATED AN ULLRICH CO.
FOUNTAIN SQUARE EVANSTON

Garment Bags

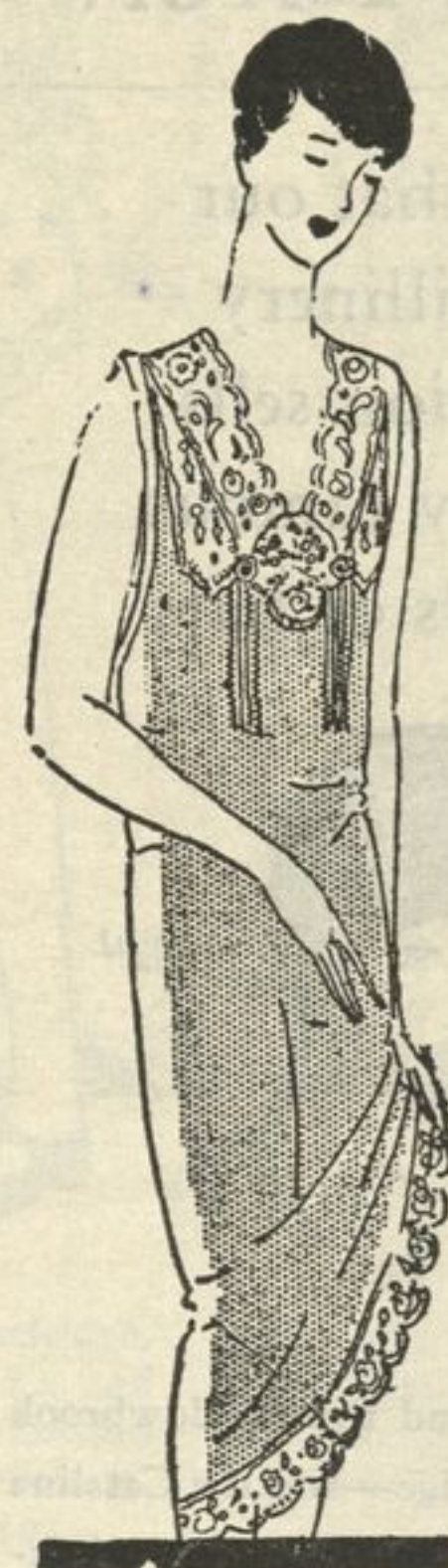
—large enough to keep eight frocks dainty and dustfree—of firm, impenetrable sateen in chintz prints, florals and stripe-and-flower combinations, \$2.

Lord's—Notions—First Floor

From today on you may charge your MARCH PURCHASES on your APRIL BILL —payable May 1st.

A convenience for people who wish to choose their spring clothes now.

Lacy Voile Gowns in Pastel Shades \$1.95



Cut full—deep yokes of binche and thread lace—in huge scallop-forming medallions. The lace-trimmed models are embroidered with tiny rosebuds and tracteries of stems. A tailored design has a yoke of a contrasting color voile, and a scattering of hand-embroidered daisies. Nile, orchid, peach and pink—most of the lace deep cream and ecru.

Empire models belted at high waist-line.

Lord's—Lingerie—Second Floor

The First Primrose

appears in a delicate, crisp, airy cluster, with others of the blossoms trailing away at the stem end. All in fresh, spring tints. \$1.95.

Sprays of Sweet Peas

in opulent purples and rose shades. To wear on the taffeta period gown. \$1.95.

Kid Flowers, Dyed Silver

The finish doesn't wear off—and gives the flower a tailored metallic sheen that is very smart. \$1.95.

Lord's—First Floor

Notes about the New Kinds of Undergarments

A scalloped petticoat, which conceals a step-in drawer, attached to it underneath. Makes a slip unnecessary. Flesh rayon, as fine as silk! \$4.95.

A bloomer with a scalloped overskirt, of white, black or flesh silk crepe. French band top. \$5.95.

Pajamas and chemises made to match. Crepe de chine, with double georgette yoke, matching exactly, and tracteries of delicately embroidered flowerets in pastel tints. Pajama, \$9.95; Chemise, \$4.95. Scalloped and picot-edged borders.

A rayon comblinette—a complete garment, with step-in drawers—Gordon or Munsing make. Flesh tint. \$1.95.

Lord's—Second Floor

Stockings Repaired by the Stelos System

are practically rewoven. There is no trace left of the disfiguring "ladder"—excepting, perhaps, a fine mend at its end. Pulled threads are drawn in again—expertly. Stockings should be laundered before they are presented for repairing.

Lord's—First Floor

CAPE COD A New Toile de Jouy

Here is life on the fishing coast spread out before your eyes—in natural-colored pictures done on a cream ground. Windmills, barnyards and fowls, open-air prayermeeting, fishing boats, a sturdy old lighthouse, big trees, fences and fields, and the "stern and rockbound coast" itself: that is the new Cape Cod, a drapery and upholstery fabric of the Toile de Jouy family. A fine, quaint piece that will warm the hearts of those who love Americana. It is 85c a yard.

Lord's—Draperies—First Floor

Quilted Chintz is much in demand

A pleasant gray-green chintz, with wee bright flowers in regular arrangement upon it; a characteristic chintz design. Closely quilted, on a base of fine, smooth, fluffy quilting. For upholstery, and pillows. 1 yard wide—\$1.75.

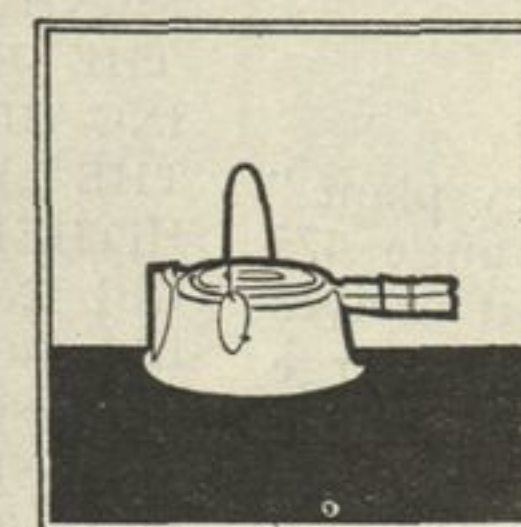
Lord's—Draperies—First Floor

Pleated Chintz Ruffling

Two-inch ruffles of fine-patterned glazed chintz—headed with a plain-colored scallop in a contrasting color. A trim finish for drapes, curtains, pillows and valances. 35c a yard. A great variety of colors.

Lord's—First Floor

Special Savings in Housewares



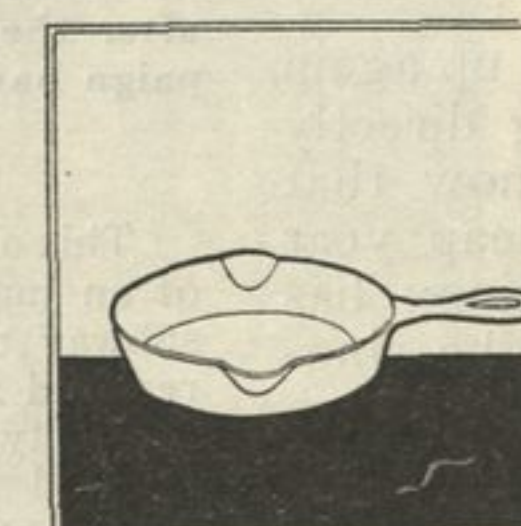
\$2.25 Wagner Waffle Iron, \$1.79

Crispy brown waffles served with maple syrup—delicious for Sunday night supper. This No. 8 Wagner cast iron high frame iron is just right for them.



\$1.25 Painted Bread Box, 98c

Your bread will keep fresh and moist in this box with its tight-fitting cover. In red or green it matches the new, bright colored kitchenware. 9 inches deep, 13 long, 10 wide.



2 Cast Iron Skillets, \$1

Wagner skillets of heavy cast iron. Two convenient sizes. No. 3 and No. 8. Good for slow and careful frying. A special value, for both ordinarily sell for \$1.39.

Lord's—First Floor—East Room

Lord's
INCORPORATED AN ULLRICH CO.
FOUNTAIN SQUARE EVANSTON

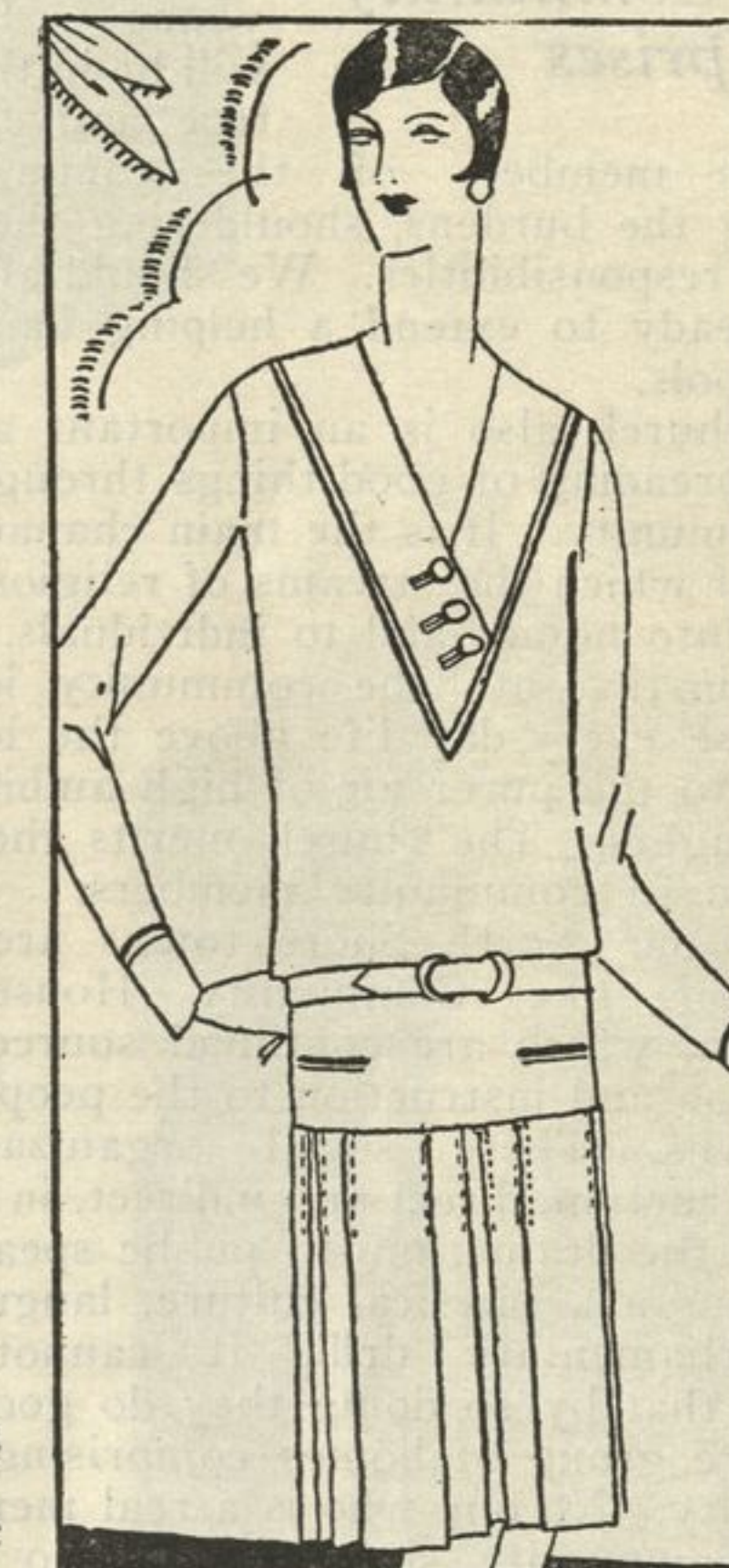
2 of the Many Models in the Sale of Mingtoy

Silk Tub Crepe

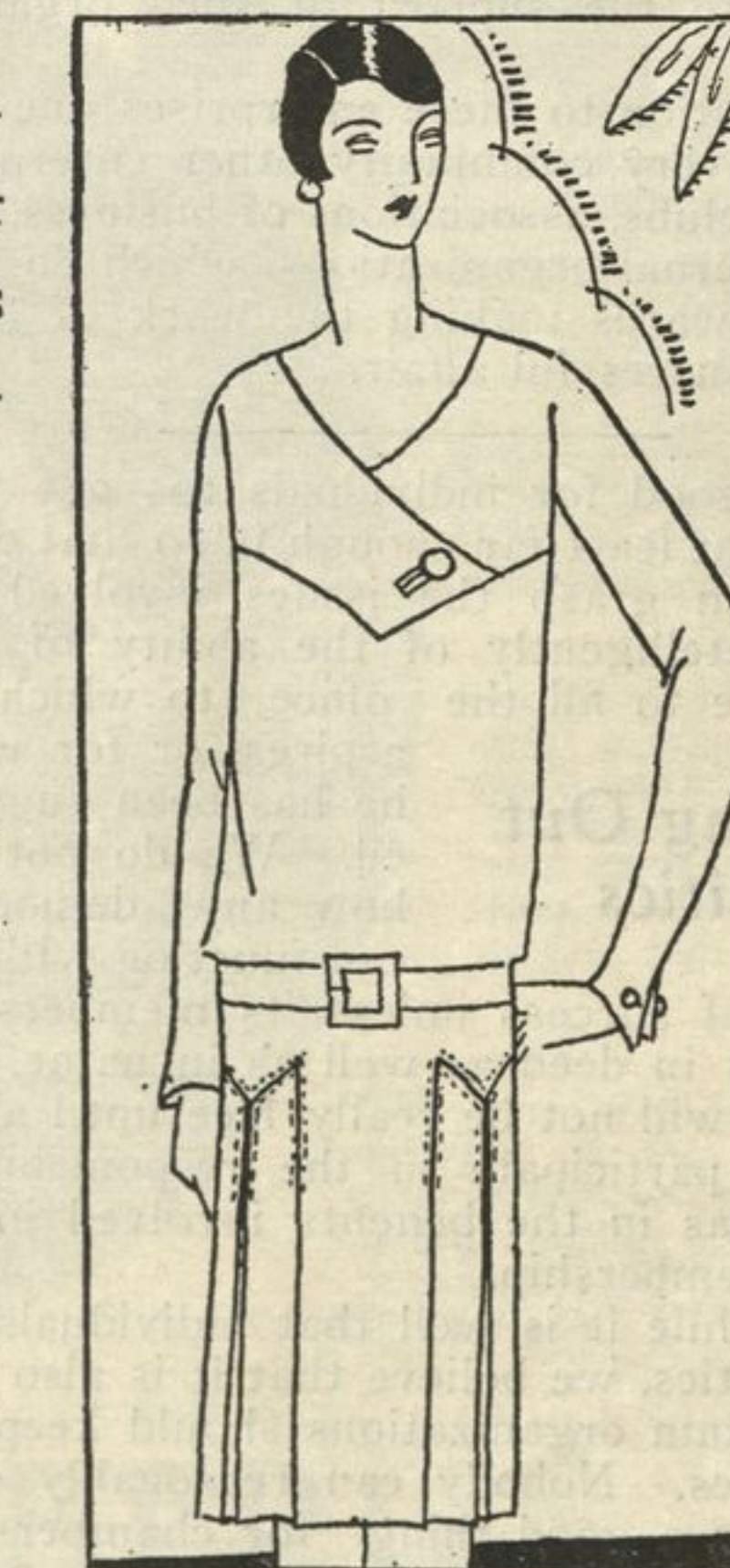
DRESSES

at

\$17.50



Beautifully tailored sports frocks in one and two-piece styles—with tuckings, pleats, pipings of contrasting color, and the other simple and effective tricks of tailoring you find usually in expensive dresses.



- | | |
|------------|-------------|
| BEIGE | POWDER BLUE |
| GRAY | YELLOW |
| CORAL | NAVY |
| CAMEO PINK | WHITE |
| LAKE BLUE | GREEN |
| SCARLET | FRENCH BLUE |

Lord's—Second Floor

Let the Conover Wash Your Dishes for 21 Meals

One week's free trial in your own home



This electric dishwasher which rolls about as easily as your tea-cart, will wash, rinse and dry your dishes in less than one half the usual time—and leaves them immaculate.

Note these additional features!

1. Requires no new plumbing.
2. Cleanses itself while operating.
3. Simple to operate.
4. Fills from faucet.
5. Drains into sink.
6. Measures water automatically.

Lord's—First Floor—East Room