

Printing Rollers Make Newspapers of Readable Type

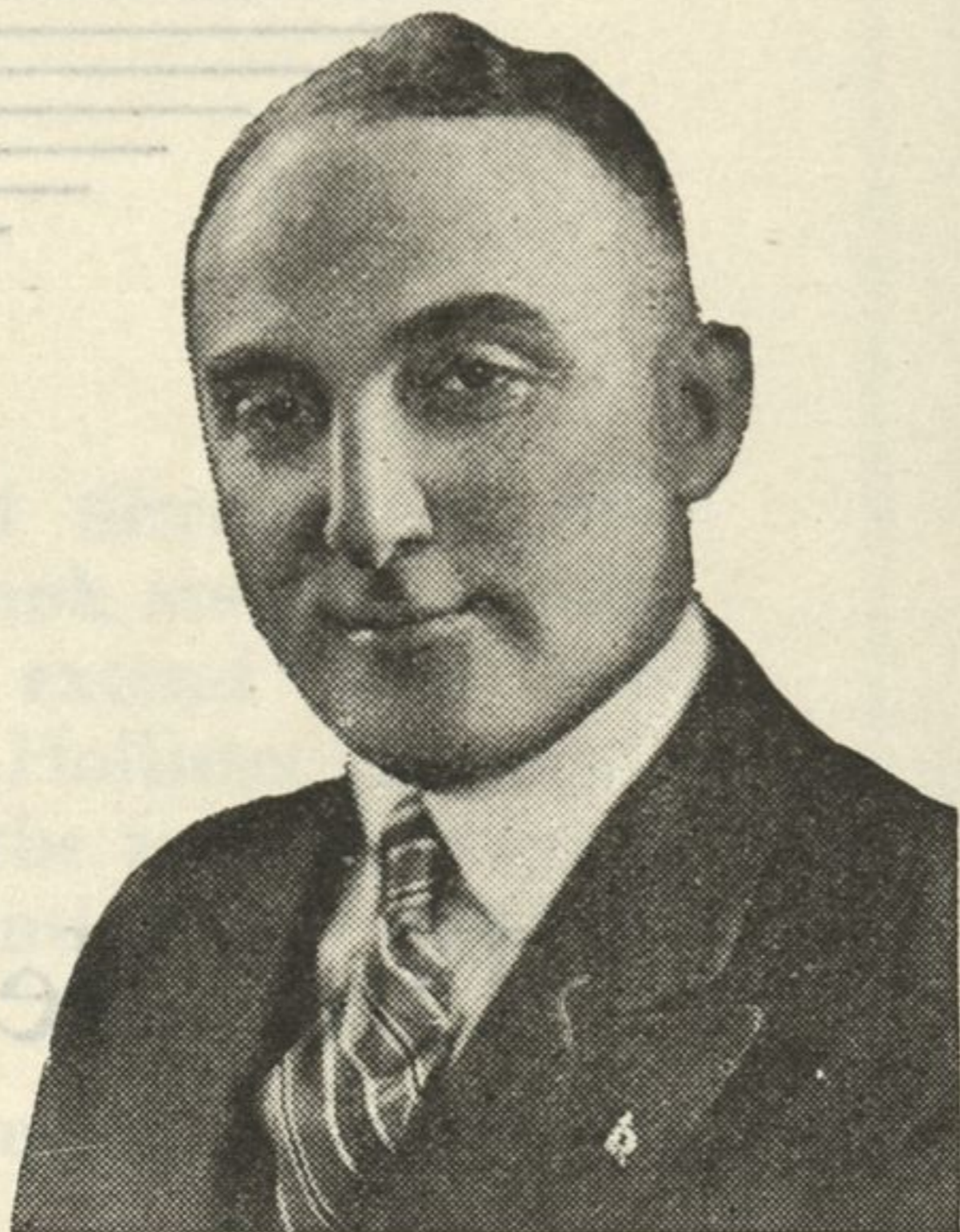
WHEN WILMETTE LIFE, WINNETKA TALK and GLENCOE NEWS reach the hands of their readers, columns as perfectly printed as is possible are presented for the eye. It is the important function of the printing roller to aid in procuring a readable paper and in this phase of the publishing business the American Printers' Roller company comes to the front. This company furnishes rollers of various sizes for the printing presses and also those used on the proof presses.

Printers' rollers are composed mostly of a glue and glycerine substance, varying as to the time of the year they are to be used, also varying according to the degrees of humidity in the press-room and the speed of the press is also a consideration.

DO YOU KNOW—

That the West Virginia Paper Mills furnish two kinds of paper stock to Lloyd Hollister Inc., namely, Super-book for covers, and Westvaco Magazine finish for inside pages of the publications?

A Go-Getter



Albert M. Levy

Albert M. Levy, here pictured, takes care of the advertising for our newspapers in Chicago and does the job well.

'Fleet' of 6 Folders Required for Work in the New Plant

IN the press room of the Lloyd Hollister Inc., publishing establishment there will be found no less than six folding machines. Four of these were furnished by the C. F. Anderson company of Chicago. The necessity for this "fleet" of folders indicates the high speed requirements of our plant.

This equipment includes two Anderson high speed catalogue and circular machines which have a capacity of 5,000 sheets folds an hour. These machines may be set for any of a wide variety of folding combinations quickly. This includes right angle, parallel and combination folds. Then there also is a Brown Folder which folds sheets as large as 32 by 44 inches and a Dexter Folder for catalogue sections.

In addition to the folders the Anderson company furnished three Dexter Automatic feeding machines.

DO YOU KNOW—

That the Christensen Stitching machine used in the Lloyd Hollister Inc., bindery has an hourly capacity of 3,600 papers of 72 pages?

SAW-TRIMMERS ENABLE GREATER 'MAKEUP' SPEED

Miller Company Provides Machines Which Mitre, Mortise, Rout and Cut Slugs

THE observing visitor in the composing room of Lloyd Hollister Inc., will see a Universal Saw-Trimmer and a Special Purpose Saw-Trimmer. The presence of these machines is accounted for by the need for greater efficiency. Speed in making up and locking the forms is gained by the use of these Saw-Trimmers which were furnished by the Miller Saw-Trimmer company.

The Universal and the Special Purpose machines are most valuable in mitring, inside and outside mortising and router work, also being used for cutting slugs and leads.

In the press room there also will be found two Miller Feeders. These are attached to the job presses and enable more accurate registration in printing. These machines have a working capacity of 2,200 impressions an hour.

The value of these machines has been demonstrated many times when speed was required to turn out WILMETTE LIFE, WINNETKA TALK and GLENCOE NEWS on time.

LINO-SAW ESSENTIAL

Charles L. Mohr, Wilmette Resident, Inventor of Slug Cutting Device Used on All Linotypes

TWELVE years ago a Wilmette man, Charles L. Mohr, who resides at 101 Sixth street invented a saw which cuts metal as a knife cuts a slice of bread, but accurately. This saw was not a big device. It was a small circular affair, 3½ inches in diameter, which when properly "motored" found its place on the linotype machine and thereafter it proved such a success for time saving and accuracy that it became known as the lino-saw, the Mohr lino-saw to be exact.

Today the lino-saw is an attachment on linotypes all over the world, and Lloyd Hollister Inc., keeping abreast of the times, has lino-saws on the linotypes in its composing room. Operated by motor in conjunction with the operation of the linotype this device saws the slug lines to proper width before they are delivered to the slug case. For instance if half column measure type is desired all that is necessary is for the operator to set indicator on the scale board. The saw does the rest.

The lino-saw does away with all the slow time labor of hand sawing the slugs to measure after they have been set by the linotype machine, an operation which in times past was wasteful and costly.

W. W. Lange in Charge of Big Composing Room

William W. Lange is in charge of the composing room and he is kept stepping fast seeing that all composition is set, that the advertising is made up and placed in the forms with the news matter. These are only a part of his job, for other things must be handled with speed, accuracy and judgment. Mr. Lange somehow, finds time to handle all his important problems.

DO YOU KNOW—

That the Lloyd Hollister, Inc., building will stand up for 1,000 years? That is the statement of Edgar Ovet Blake, designer of the structure.

Bon Voyage

Year after year through honest toil the Hollister Press has builded.

Now as they are leaving the old home for the new, we—their neighbors and friends—wish them sincere good fortune, and bid them "bon voyage" as they embark toward the greater future that awaits their coming.

STATE BANK and TRUST COMPANY

Established 1874

Orrington at Davis
Evanston, Illinois