

Many a mere pretty "flapper" has been transformed, by becoming glasses, into that rarest of beings—a beautiful and intelligent-looking woman.

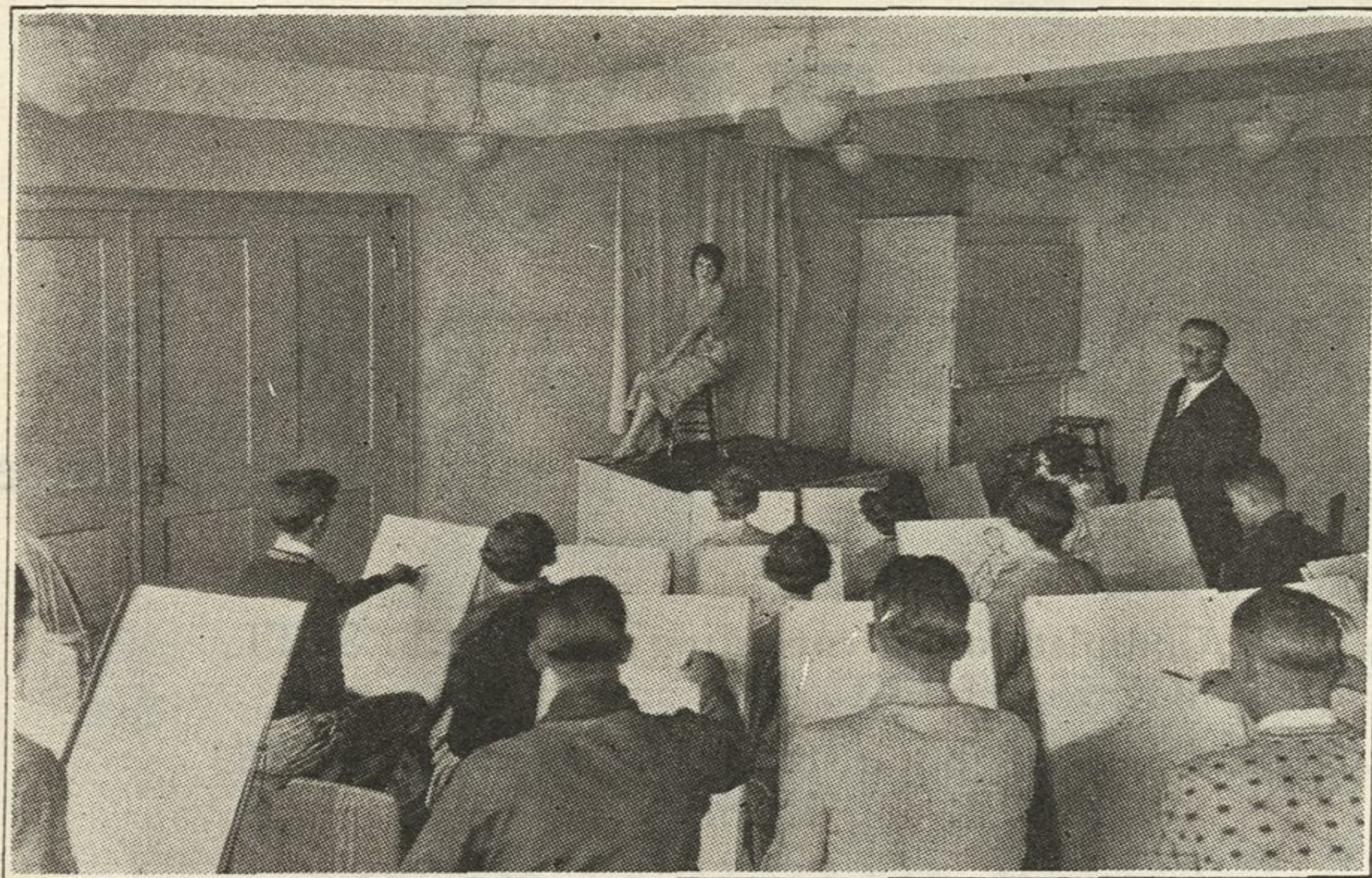
Optometrist

Dr. G. A. Stone

1177 Wilmette Avenue  
WILMETTE

Appointments  
divisible

Phone 2766



## Evening Art Classes in Evanston

Each student follows a program arranged according to his or her ambitions and ability. Drawing from life, some evenings. Other evenings—evolving layouts for advertising, studying, color theory and practice, composition, design, symmetry and lettering. Carefully directed individual progress, under skilled tutorship.

The beginner, the art student or the professional artist is welcome to join the classes Monday, Wednesday and Friday evenings, 7 to 9:30. Tuition is nominal. Because instruction is individual it is possible to enroll at any time.

Evening classes in Interior Decoration and Costume Design are also open at this time. The Day classes are in session Monday to Friday inclusive, 9:00 to 12:00 and 1:00 to 4:00; Children's classes Saturday forenoon, 9:30 to 12:00.

## THE EVANSTON ACADEMY OF FINE ARTS

CARL SCHEFFLER, Director

Carlson Building Tower, Church and Orrington  
Telephone Greenleaf 1674

## New Locomotives Great Aid to Freight Transit

Facilities of the Chicago North Shore and Milwaukee railroad for handling carload freight business have been increased with the placing in service of two additional locomotives of a new type specially constructed for the "Road of Service."

The feature of these locomotives is their double source of power—trolley and storage battery. The trolley is used on the main line and all other trackage where overhead power connections are afforded. Use of the storage battery for moving freight on industrial sidings and switch tracks without trolley connections greatly increases the flexibility of operation. An economical feature of these locomotives is the fact that the storage batteries are recharged from the trolley while the locomotives are in service on the main line.

## Kildeer Club Members in Membership Campaign

Members of the Kildeer Country club held a dinner at the North Shore hotel, Evanston, last week to celebrate the "club completion campaign." The occasion represented a send-off to the members who are launching upon a membership campaign. It is the plan of the club to dispose of all remaining unsold memberships within sixty days. Kenneth L. "Tug" Wilson, athletic director at Northwestern university, was the toastmaster. Two hundred and seventy-five members attended the dinner.

## Stage Dance to Obtain Funds for "Lindy" Bust

A High school dance will be given at New Trier High school this Saturday evening under the joint auspices of the New Trier Tri-Ship club and the New Trier Girls' club.

The proceeds from the dance will go toward a fund being raised through such affairs for the purpose of purchasing a large bust of Col. Charles A. Lindbergh, which is to be mounted in the new High school gymnasium.

## Little Symphony Adopts Musical Instruction Plan

George Dasch and Karl Schulte, director and manager, respectively, of the Little Symphony orchestra, which this week gave the final concert of the current New Trier Orchestral association series at the high school auditorium, announce the establishment of a Department of Musical Instruction under the direction of Walter L. Larson.

The growing interest among young people in the study of orchestral and band instruments has prompted the formation of this new feature in conjunction with the Little Symphony, according to the sponsors.

Instruction is to be given at headquarters of the orchestra at 218 S. Wabash avenue. Members of the orchestra will serve as instructors and the tuition cost will be moderate, it is explained.

The following instruments will be taught by members of the Little Symphony orchestra: violin, viola, 'cello, bass, piano, harp, flute, oboe, clarinet, bassoon, horn trumpet and cornet, trombone, tuba, timpani and percussion instruments, saxophone and banjo, as well as all the band instruments in general use.

Director Larson, a member of the orchestra, has enjoyed wide experience in the music school field.

## WRITES FOR MAGAZINES

An invitation to the allday meeting of the Garden club of Illinois, on Monday, February 27, at the Hotel Sherman, discloses that the list of speakers for the program includes Mrs. Vibe Spicer of Kenilworth, whose subject was "Gardens—Yesterday, Today and Tomorrow." Mrs. Spicer is noted as a gardener and a poet and in the recent issue of the bulletin of the Garden Club of America appears an article by Mrs. Spicer on the culture and care of a garden. A poem by Mrs. Spicer, "Nancy Hanks' Lullaby," occupies an entire page in the February issue of the Ladies Home Journal.



## A Fence for the Small Estate

These snug little suburban homesteads of two or three acres can well mark their legal limits with the fence that "fits in" admirably with artistic and comfortable surroundings.

RUSTICRAFT'S hand-split timbers of tough young chestnut are as good to look at as they are sturdy and durable. Their natural rustic appearance actually improves with age and requires no paint or care. RUSTICRAFT is easily erected and just as easily taken down for removal.

Illustrated Booklet and prices on request

**RUSTICRAFT**

POSTOFFICE BOX 271

EVANSTON, ILL.