

Lord's
INCORPORATED AN ULLRICH Firm
 FOVNTAIN SQUARE EVANSTON

**HOSE
 GLOVES
 and
 HANDKERCHIEFS**

**Imported
 Hose**

For the Southern traveler or early spring golfer—imported lace-lisle hose! Zig-zag lines that form open diamonds are woven into this sport stocking. Smart for street wear, too. In beige, champagne, and silver, \$2.25.

Lord's—First Floor

**Tailored
 Gloves**

The simply tailored glove is worn for afternoon or street dress. A one-clasp, hand-stitched Dent glove of washable fabric is an accessory that may well be in perfect harmony with your tailored ensemble. \$2.25.

Lord's—First Floor

**French Print
 Handkerchiefs**

Green porcupine and prickly pine needles, zig-zag lines of lightning, queer-shaped futuristic designs, and bands of rich coloring decorate these fascinating French Print handkerchiefs. 35c.

Plain colored handkerchiefs with subdued motifs are also attractive.

Lord's—First Floor

MILLINERY

**Hats of Felt, Silk
 and Straw**

An amusing mode of trimming is used in the crown of a mauve beige felt. From the center of the crown down over the top in petal-like design are smooth brown, white and mottled feathers in geometrical arrangement. Its narrow brim is bound in twisted grosgrain ribbon. \$15.

Lord's—Second Floor

**Blossoms for
 Your Coat**

The very breath of spring is in these pink and white apple blossoms of crisp tinted muslin. Some are all white, others tipped in pink with curled petals. 50c. Velvet ones \$1.25.

Sunny Pansies—Too

Like little smiling faces are velvet spring pansies in deep purple and yellow. Lovely on your coat or dress! \$1.50.

Lord's—First Floor

The "TOUT
 ENSEMBLE"

In this day of complete and harmonizing costumes, Vogue decrees that no costume can be smarter than the least of its parts.

Each accessory, then, has its own significance and must be part of the tout ensemble.

Belgian Lace

Collars and cuffs of real Belgian lace would make the smartest and loveliest of trimmings! Designed from lace worn by Princess Astrid of Belgium. In delicate ecru, \$4.50 to \$6.00 yard. Cuff banding to match, \$3.50 yard.

Lord's—First Floor

Sport Belts

Colored suede belts bound in steel beads give a sportive touch to your costume. Blue, beige, deep brown, red, tan and black. Lined, \$1.50. Unlined, \$1.00.

Lord's—First Floor

NEW DRESSES

\$17.50

Georgettes for Spring

Georgette is very much the vogue for Spring wear. Navy, and navy combined with red are particularly good.

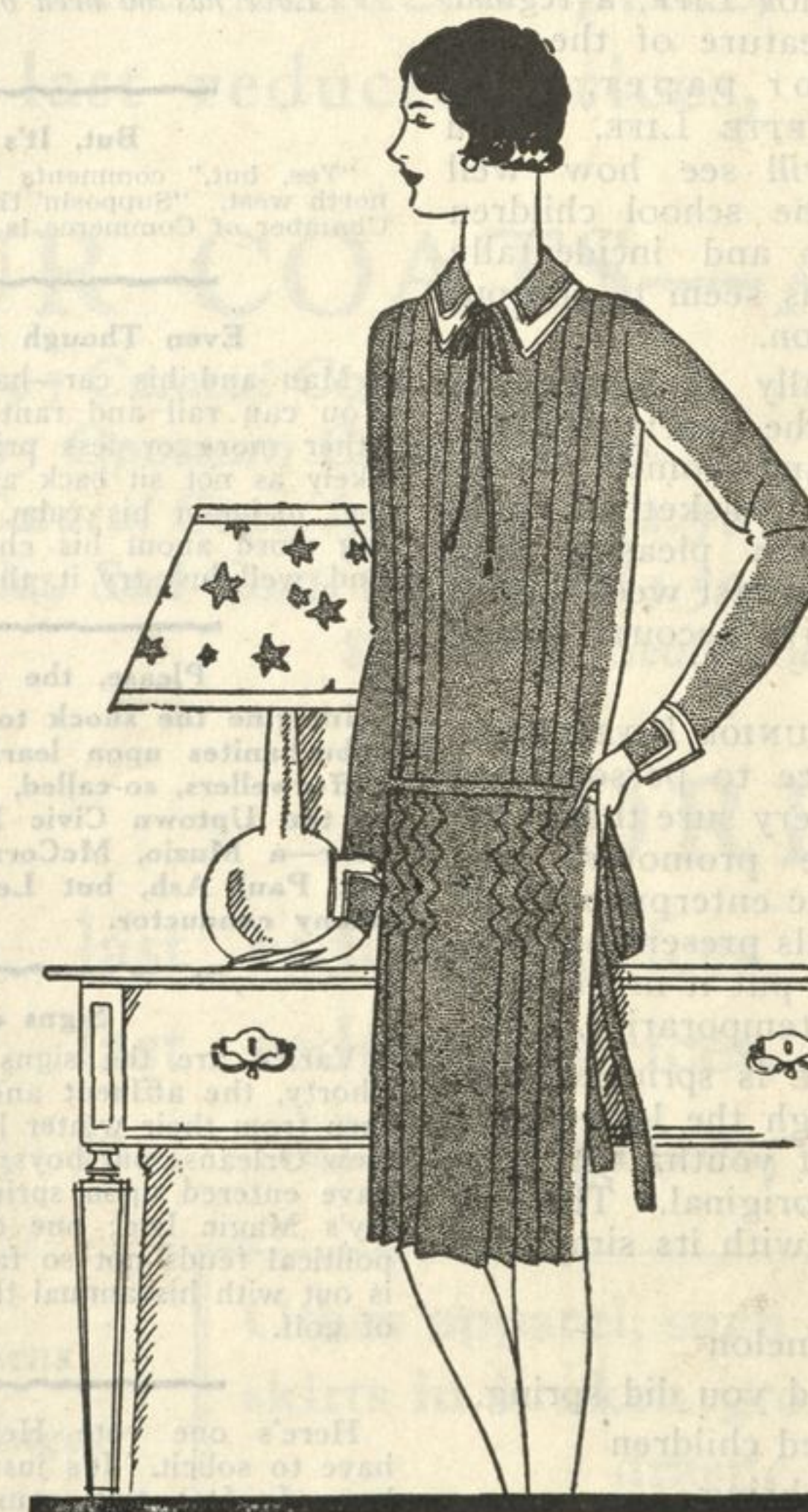
One navy georgette has a rather wide band of steel nail heads which ornaments the neckline and front. The skirt has a draped over-flounce in front. \$17.50.

Hemstitching and drawn work attractively trim the blouse of a two-piece Malaga red georgette. A narrow neck-band piped in tan falls into a soft bow. The skirt is pleated. \$17.50.

Lord's—Second Floor

An oak georgette with a diagonal pleated flounce has a draped bodice fastened on the left by a sparkling pin of brilliants. A fold of the georgette ties in a plain bow at the waist. \$17.50.

Tiny tailored bows of blue georgette on an ecru lace collar daintily trim a Powder Blue dress. It has a black suede belt with blue ornaments. \$17.50.



Lord's
INCORPORATED AN ULLRICH Firm
 FOVNTAIN SQUARE EVANSTON

**JEWELRY
 and
 PURSES**

These Accessories Too, Must Go With Your Costume.

Both practical and smart is an ostrich-grained pouch bag. In natural ostrich brown, with a back-strap piped in gilt. Three gold balls untwist when opened, disclosing a swinging purse and mirror. \$3.50.

Lord's—First Floor

Festive Chokers

A graduated string of delicate rose quartz combined with three olive-shaped beads of Chalcedony blue make an interesting choker. Tiny seed pearls encircle the Chalcedony beads in a fascinating manner.

Lord's—First Floor

SPORTS SCARFS

Add Vivid Color

In a season of color the brilliantly hued sports scarf adds a vivid touch to an otherwise somber costume.

Hand-blocked triangles which tie in soft knots over the shoulder are most effective. One has a rich brown two-inch border on a beige background. Bright green and brown circles bound in orange decorate the corners. \$3.25.

Others not quite so daring have conventionalized designs in harmonizing colors. These are equally gay.

Lord's—First Floor