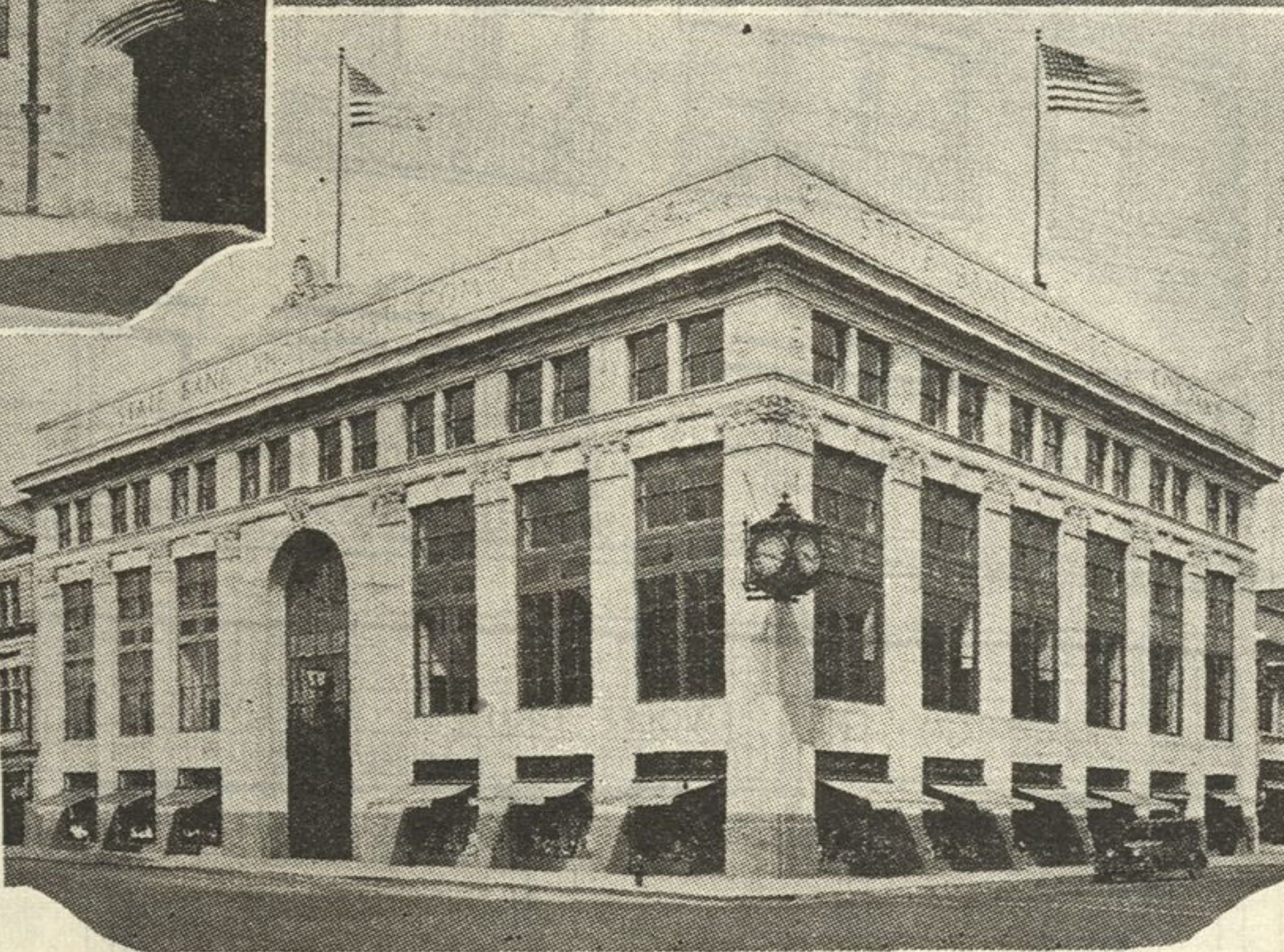
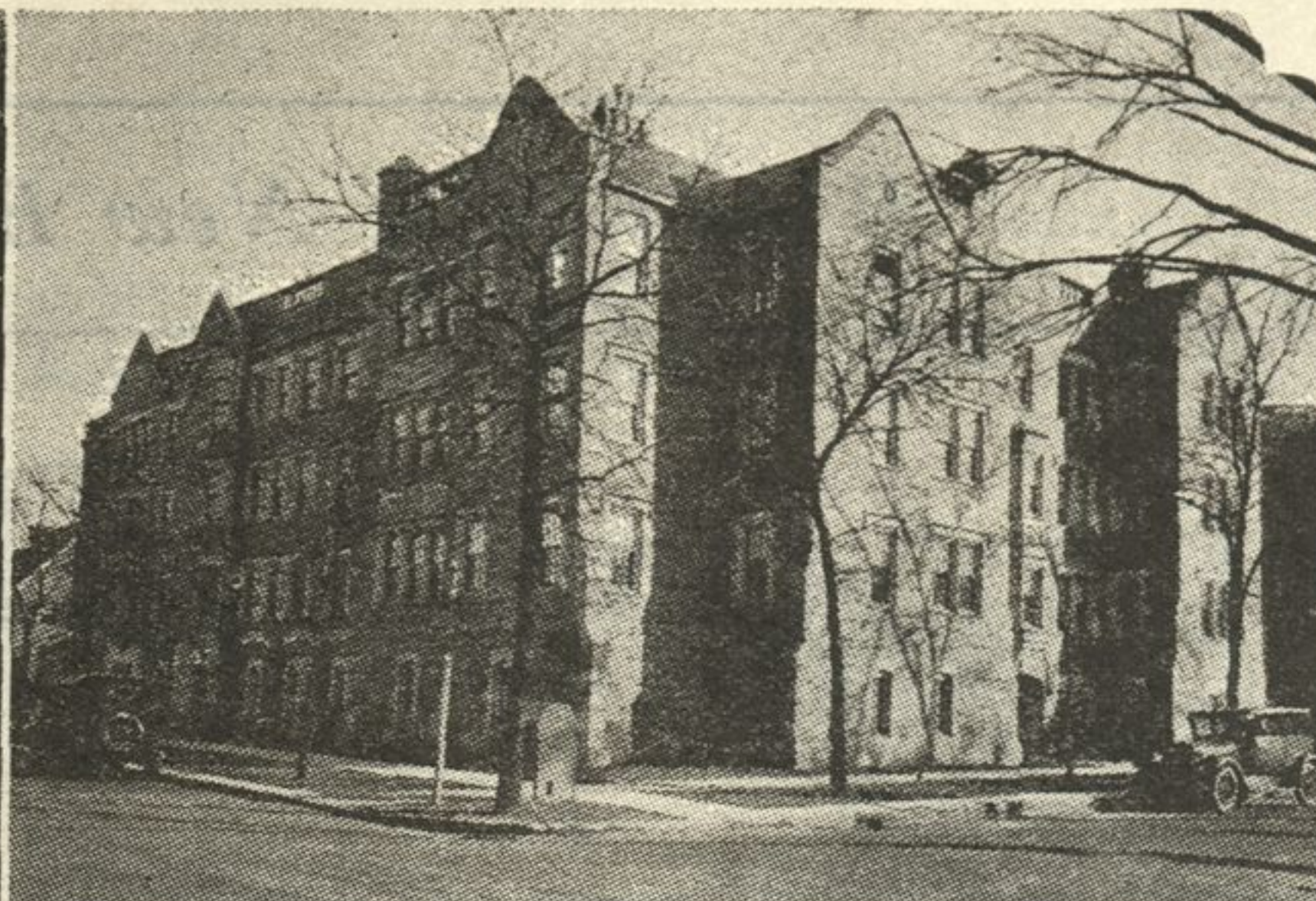
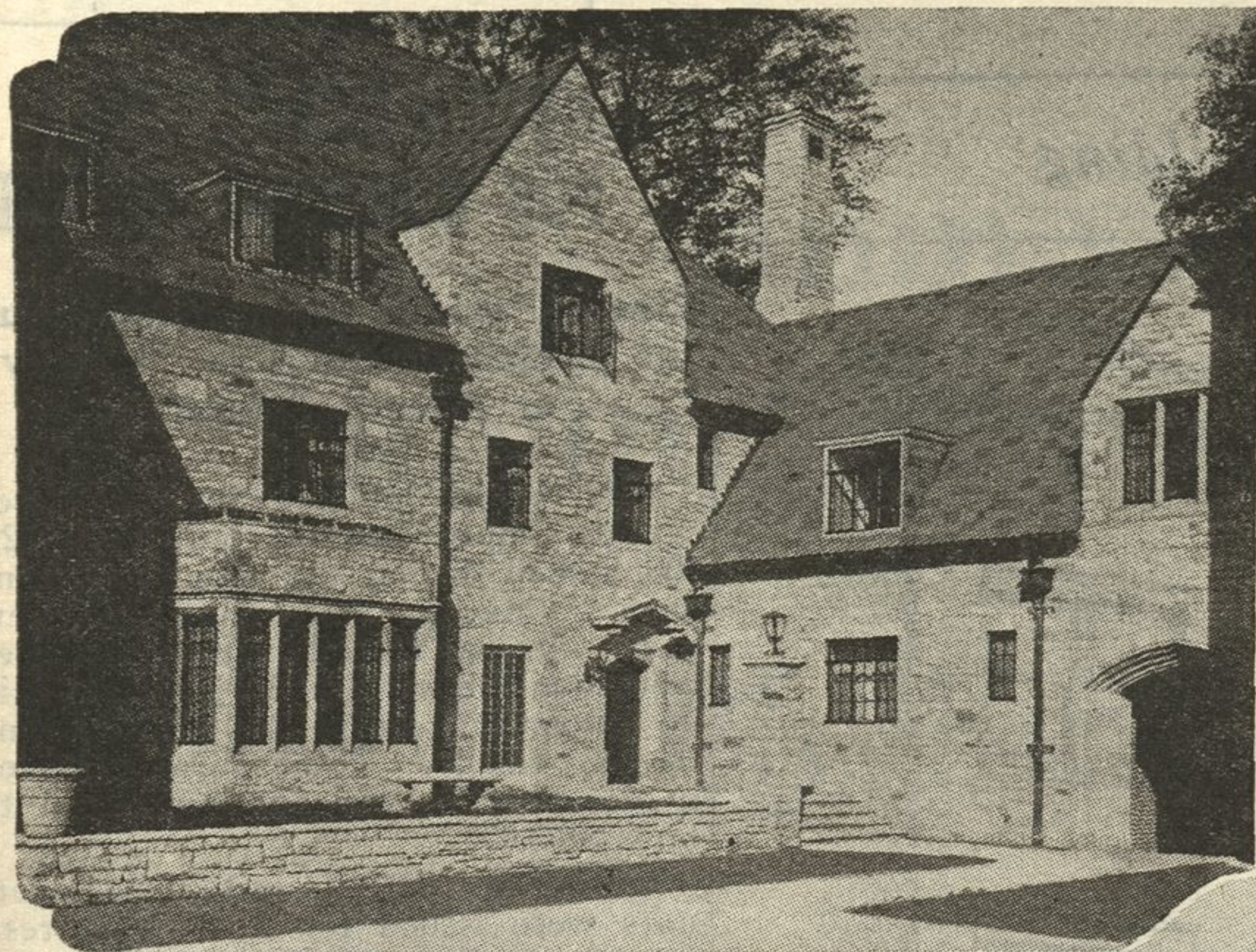


Buildings That Win Art Commission's Honor Plaques



Top Photos by Ray

A typical corner of the Northwestern university sorority quad, winner of the Evanston art commission's award for the best public building, is shown at the upper left. At the upper right is a picture of 999 Michigan Avenue, winner of the plaque in the apartment class. At the right is the home of the State Bank and Trust company, winner among the business buildings.

GLENCOE SETS PACE IN PAVING PROJECT

Board Approves Plan of Street Commissioner Aaron B. Moe; Calls for Estimate

Glencoe, which during the past year has been serving as pacemaker for her sister north shore villages in the matter of developing large new sub-divisions and in building activities in general, now comes forward seeking new laurels in the way of a street widening and paving project in keeping with other high records which it has attained.

Tentative plans for this work submitted by Street Commissioner Aaron B. Moe to the Village board at its last meeting and approved by that body, are said to comprise the most comprehensive piece of work of the kind that has been undertaken on the north shore.

It is proposed to make all residence streets 32 feet wide. A request for a president's estimate of the cost has been made, and it is hoped soon to have work underway.

Report of Commissioner

The report of Street Commissioner Moe, in which he visions and provides for a much greater Glencoe in no far distant day and a list of the streets which he recommends be paved with a 32 foot paving, follow:

"In my opinion it is desirable at this time to institute proceedings looking toward the paving of a number of streets within the village of Glencoe, which, when completed, will form a comprehensive street system. Due to the fact that the present streets were built at a time when motor vehicles were much less numerous than they are now and wheel loads were much lighter than at present, the existing streets are now found to be too narrow and the pavements inadequate to carry the loads which must pass over them.

For this reason, pavements are deteriorating faster than it is possible to repair them, and the amount of money that is now necessary for upkeep is, in my opinion, greater than the interest and depreciation would be upon new and adequate pavements

Plans 1928 Work

"I have made an inspection of the streets in the village, and am recommending for improvements during 1928 certain streets, which, in my opinion, are most urgent. Certain other streets probably will need to be improved during 1929, or, at the latest, 1930. In so far as possible, I have made the proposed improvements form a connected system of streets in order that the improvement of a single street in a neighborhood might not unduly attract traffic from other streets, and thereby cause annoyance to the residents of the street which has been improved. I have also included the cross streets with longitudinal ones in order that the assessments upon corner property may be more equitably distributed."

The following table shows the streets recommended for paving with a 32 foot pavement, including the curbs and gutter:

- Grove street from Skokie Road to Jefferson.
- Greenwood Avenue from Milton to Jefferson.
- Vernon Avenue from Green Bay road to Tudor court, and from a point 132 feet south of Hazel Avenue to South Avenue, and from Jefferson street to the South Village limits.
- Greenleaf Avenue from Beach road to Mortimer road.
- Green Bay road from South Avenue to the east village limits.
- Longwood Avenue from Beach road to Hawthorne Avenue.
- Glenwood Avenue from Woodlawn Avenue to the east village limits.
- Milton Avenue from Greenwood Avenue

(Continued on Page 58)

COMMON BRICK SHOWS WELL

Common brick is more and more being used to achieve the modern tendency to rougher surfaces and

mass textural effects in walls. Its irregular lines, its different colorings, its glistening, hard head clinkers and overburdened dark benches combine,

through the direction of the architect and the mason's clever handling, to produce tapestried effects of mellowed beauty.

YOUR CHOICE OF MANY NEW HOUSES

To anyone contemplating the purchase of a home in the near future, the many available, newly-built houses should prove particularly interesting and inviting.

Something over one hundred new houses, scattered from Evanston north to Highland Park, await your inspection. They offer you every variety of design, construction, size, price, convenience and location.

- New 5 room homes, \$11,500 to \$24,000
- New 6 room homes, \$11,700 to \$30,000
- New 7 room homes, \$16,500 to \$48,500
- New 8 room homes, \$28,500 to \$47,500

MOUAT & FLAHERTY

Incorporated

DOWNTOWN OFFICE 35 NO. DEARBORN CHICAGO CENTRAL 7870



NORTH SHORE OFFICE 1177 WILMETTE AVE. WILMETTE WILMETTE 766

Crosby and McKendry Report List of Sales

Crosby and McKendry, of Winnetka report the following sales: Lot on Ahwahnee road, Lake Forest; lot on Cedar Avenue, Highland Park; lot on Maplehill road, Glencoe; lot on Lake street, Glencoe; 2 lots on Woodlawn, Glencoe; 3 lots on Scott Avenue, Winnetka; lot on High street, Winnetka.

Improved—241 Harbor street, Glencoe; 1010 Cherry street, Winnetka; 81 High street, Winnetka.

Rentals—801 Elm street, Winnetka; 562 Center street, Winnetka; 252 Franklin road, Glencoe; Vernon Avenue, Glencoe.

Garrett Johnston Back; Toured Florida Coasts

Garrett F. Johnston of the firm of R. M. Johnston and company, real estate brokers at 340 Linden Avenue, Wilmette, returned to the north shore last week from a month's tour of Florida. Mr. and Mrs. Johnston and Mrs. Johnston's father, A. F. Macdonald, toured both the East and West coasts during their sojourn in Florida.

PIPE INSULATION HAS VALUE

The worth of pipe insulation for the home heating plant has been demonstrated. Pipe insulation is one of the many things that may be done around the home without skilled labor. The home handy man will find a prepared insulation which comes with metal ties and sealing strip in place.

LOANS AT VERY LOWEST RATES On Vacant and 2nd Mortgages

P. W. Bradstreet & Son

788 Elm St. Winnetka 162