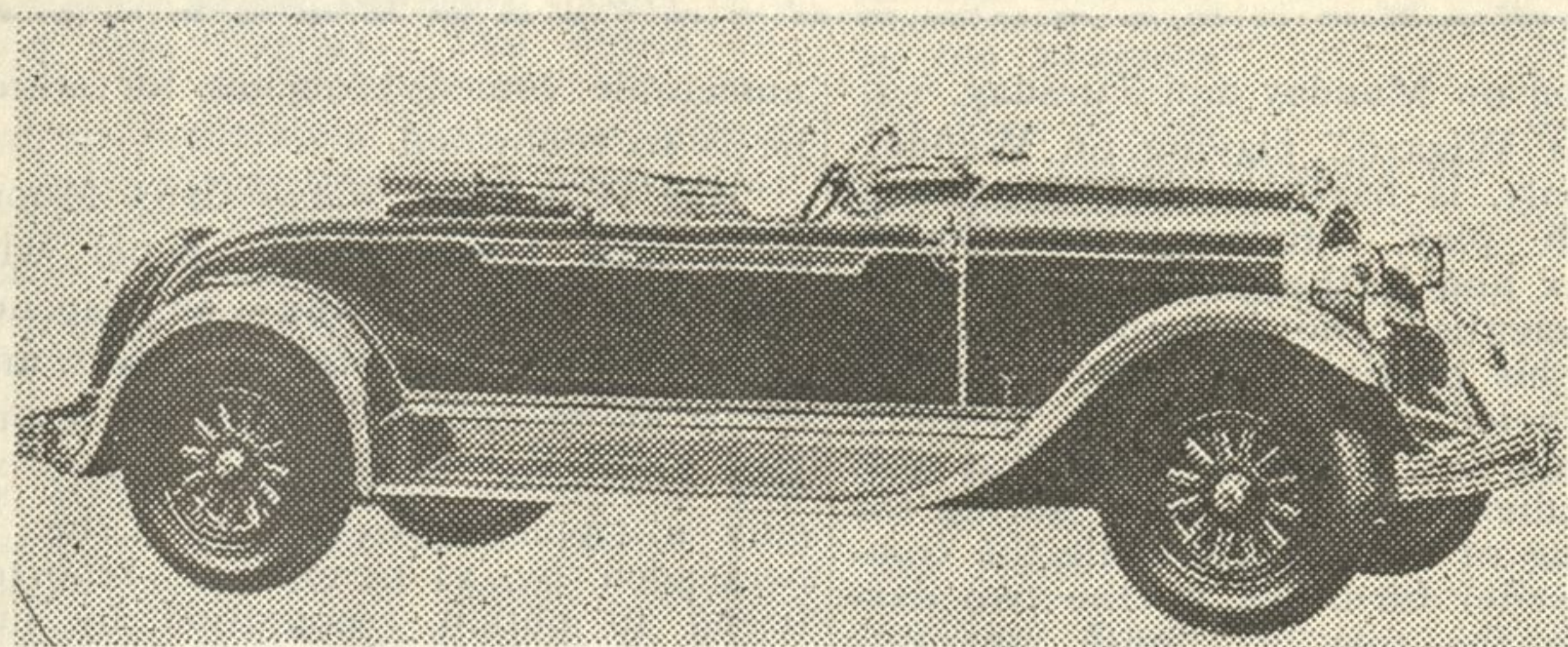


Chrysler Roadster



One of the forty body styles put out for the 1928 auto trade by Chrysler. This is a roadster—the collegiate Chrysler.



..... and higher



A Typewriter

for
\$5.00

Our new budget system enables you to purchase an Underwood, Corona, Royal, or Remington portable on an easy payment plan. Five dollars down, the balance to be paid in small sums each month.

School themes and reports that are typewritten make an impression upon the teacher. They are neat in appearance and are easier to read. Besides, you save time, money, and energy.

Lighten your school burdens. Purchase a portable now on our easy payment plan.

Chandler's

Fountain Square — Evanston

Society for Shut-Ins Holds Election Tuesday

Officers to serve the Vocational Society for Shut-Ins this coming year will be elected at the annual meeting to be held next Tuesday at 2:30, at

the College club. Officers' reports for the past year are to be read before the election. Following the election, a musical program will be given by Eusibio Concholdi, noted baritone. He will be accompanied by Miss Marion Black of Glencoe. Tea will be served after the musicale.



..... and higher!

*Would you look young?
a near-sighted squint
adds more years to your
appearance, than becoming
glasses possibly could.*

Optometrist

Dr. G.A. Stone

1177 Wilmette Avenue
WILMETTE

Appointments
advisable Ph. 2766

FOR YOUR HOME MOVIES A Complete Service Is at Your Door

To demonstrate in your own home at your convenience—

Bell & Howell Filmo, Eastman Kodascope and the marvelous De Vry Home Projector—priced at \$85.00.

To produce motion pictures—

Films of your baby, boy, girl, father, mother. Weddings, social affairs, club activities, etc.

To develop, print, title and edit—

Films that you expose in your own Filmo, Cine Kodak or other motion picture camera.

All processing is done right in our own modern laboratories located in Wilmette.

To service the reels which you now have in your own home film library.

To procure for you reels of film (16 mm home size) covering almost any subject you desire—

Travel, Scenic, Educational, Scientific, Industrial, War, Drama, Comedy, Cartoons, Features.

Lehle Film Laboratories

(Producers of non-theatrical films since 1915)

514 PARK AVE. WILMETTE PHONE WIL. 1076

Demonstration appointments can be made by phone for any time, day or night. Week days or Sunday to suit your convenience.