

Firestone

Gum-Dipped

Vulcanizing

*Balloon Tires
a specialty.*

GENERAL
AUTO REPAIRS

WASHING — GREASING

JOHNSON MOTOR SERVICE

806 Oak Street, Winnetka
Telephone 2048 Winnetka

HUP HAS A NEW EIGHT

Eighty Horsepower Engine and 120 In. Wheelbase Give It Distinction

There is a new eight-cylinder Hupmobile this year known as the Century Eight. It is powered with an 80-horsepower engine mounted on a chassis of 120-inch wheelbase. All models are low and have the same paneling as the Hupmobile six at the rear, which conceals the gasoline tank, frame and spring ends. No mechanical parts obtrude at any point.

The radiator is of the deep type. The lamps have narrow bands, and the fenders are one piece. The nameplate is new. Chromium plating is utilized for exterior bright work. The closed bodies are fitted with one-piece windshield and military visor. The engine is of the high-compression type, providing quick acceleration, speed and hill-climbing ability with all grades of fuel.

Brakes are of the steeldraulic internal expanding, as on the new Hupmobile six. Improved riding ease is obtained by new type springs, with shackles at the front instead of the rear, and by shock absorbers.

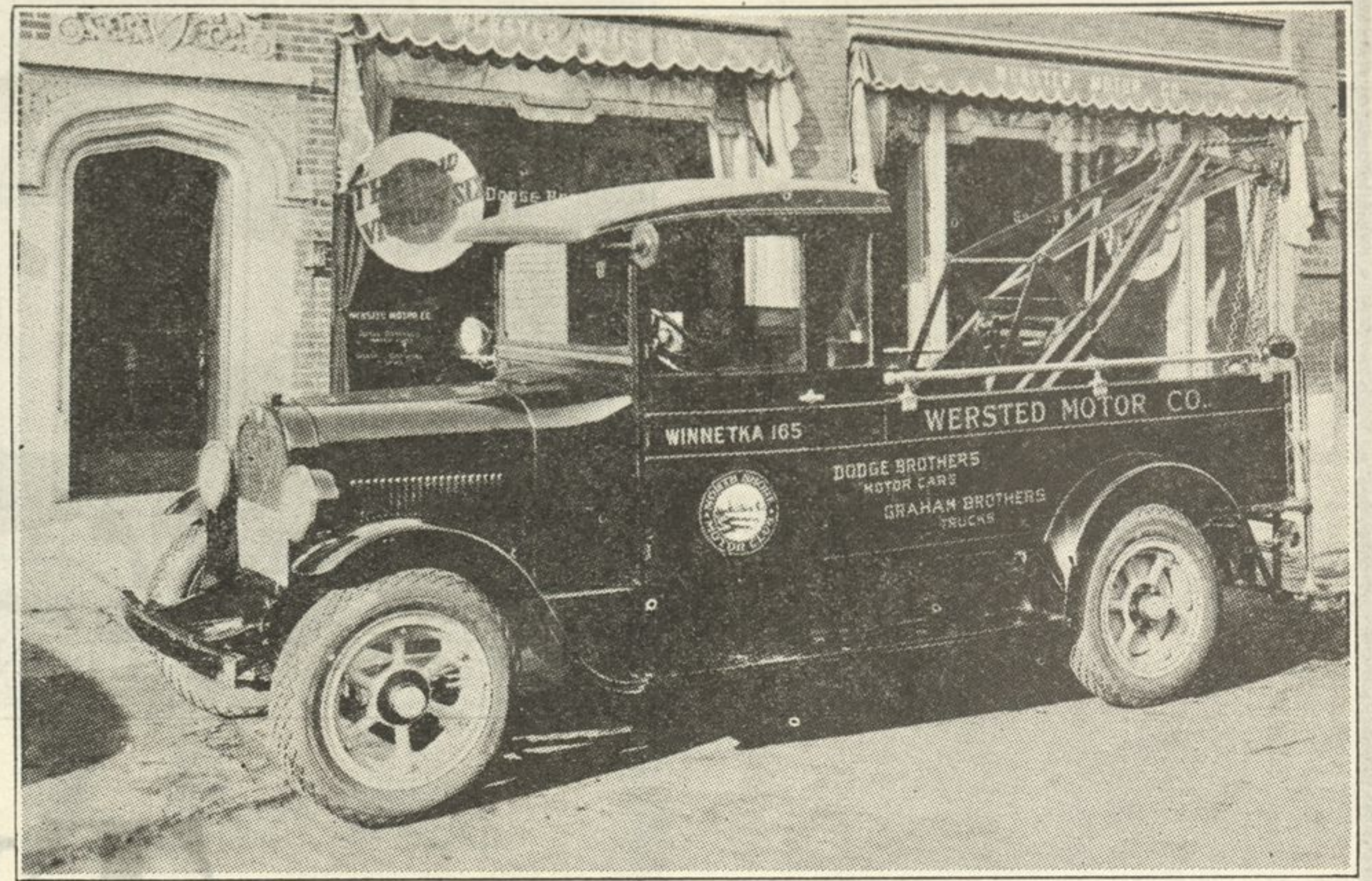
The seven body styles are of composite steel and wood type, reinforced at all points of strain. Narrow pillars, strongly braced, give maximum vision. Moldings are stamped into the body metal.

Vibration has been carefully studied with a view to eliminating every possible cause.

The Hupmobile is handled in Evanston by the Ridge Motor Sales company, 1823 Ridge avenue.

Illinois plans to construct 1,583 miles of concrete roads during 1928—its largest road-building program.

Wersted Service Up-to-the-Minute



This is the Wersted Motor company's new one-ton Graham Brothers Service truck, made by Dodge Brothers, whose cars Wersted Motor company also handle and in whose showroom, at 562 Lincoln avenue, Winnetka, there is now being displayed the new 1928 Dodge models. The truck is the latest addition to the already complete equipment of the Wersted garage, which, in addition to doing all kinds of repair work, carries a large stock of tires, batteries and repairs for all makes of cars. The truck, shown above is equipped with a two and one-half ton crane, jacks, blocks, etc., and gasoline and cylinder oil for the disabled car. With this super-service equipment the Wersted Co. has the satisfaction of knowing that it can handle any wreck—that no job will stump it. W. T. Wersted, head of the company, is one of the pioneers in the automobile business on the north shore.

Most Powerful New Car is Auburn With Rating of 115 h. p.

While grace of line and brilliance of color will mark most of the models displayed at the annual Chicago auto show, the dominant impression will be power.

Studebaker has presented a new car of a hundred horsepower, Chrysler one of 112 and Auburn has come out with the most powerful of all, a straight-eight of 115 h. p.

"America has grown up in automobiles," is the comment of E. C. Cord, president of the Auburn Automobile company, on this new model. "The chugger is past. Drivers demand a flow of power that was never dreamed of three years ago. This power must be instantaneous; it must be under

perfect control; must be at the whim of the man who is behind the wheel.

Big Cities Demand Power

"In our enormous cities, with traffic becoming more and more congested, there can be no delay in starting. The driver must be gone in a flash. Only power can do that.

"On the country roads comes the same demand. There must be speed, but speed that can be maintained for long periods. There must be power to make the highest hill without faltering and there must be ease and comfort in the directing of that speed and power.

"But a powerful motor car must be built to withstand the strain of this huge power plant. The frame must be strengthened, the body must be built more rigidly and the entire car made heavier. Otherwise the life of the car would be brief. That is what we have done with Auburn."

Two Former Custom Models

The new Auburn line to be exhibited at the automobile show is comprised of three new chassis, a six and two straight-eights, with many refinements in body design and the addition of two new bodies heretofore obtainable only on special order from custom coach builders—a phaeton-sedan and speedster.

The chassis frames on the new Auburns are heavy and strongly braced. The motors used in all three models are Lycoming, and all motors have Bohnalite steel strut pistons and duralumin rods. The straight-eight motors are equipped with Lanchester vibration dampeners, and the motor in the Model 115, the largest chassis in the Auburn line, develops over 115 actual horsepower.

A new chassis feature of the Model 115 is a muffler by-pass, which reduces back pressure from five and a half to one and a half pounds.

Bondurant Motor Sales, 1029 Davis street, handles the Auburn in Evanston.

Grocers and dealers in food products in the United States use 147,810 motor trucks. They are the second largest users of trucks.

RESIDENCE PHONE
Wilmette 765-R

BUSINESS PHONE
Winnetka 686

EDW. V. CULLISON

Oiling & Greasing
Tire Repairs
Accessories

Auto Service

909 LINDEN AVE.
HUBBARD WOODS, ILL.

Towing Service
Overhauling
Repairing

THE DENT SHOP

Reg. U. S. Pat. Office

BODY BUILDING — TOP WORK — UPHOLSTERING
WELDING — STRAIGHTENING — CUTTING
GENERAL AUTO REPAIRS

Washing — Greasing — Polishing

ALL REPAIR WORK — FLAT RATE BASIS

Black & White Garage Service

Supervision of C. Blomgren

554 Lincoln Ave.

Phone Winnetka 74