

Lord's

Fountain Square Evanston

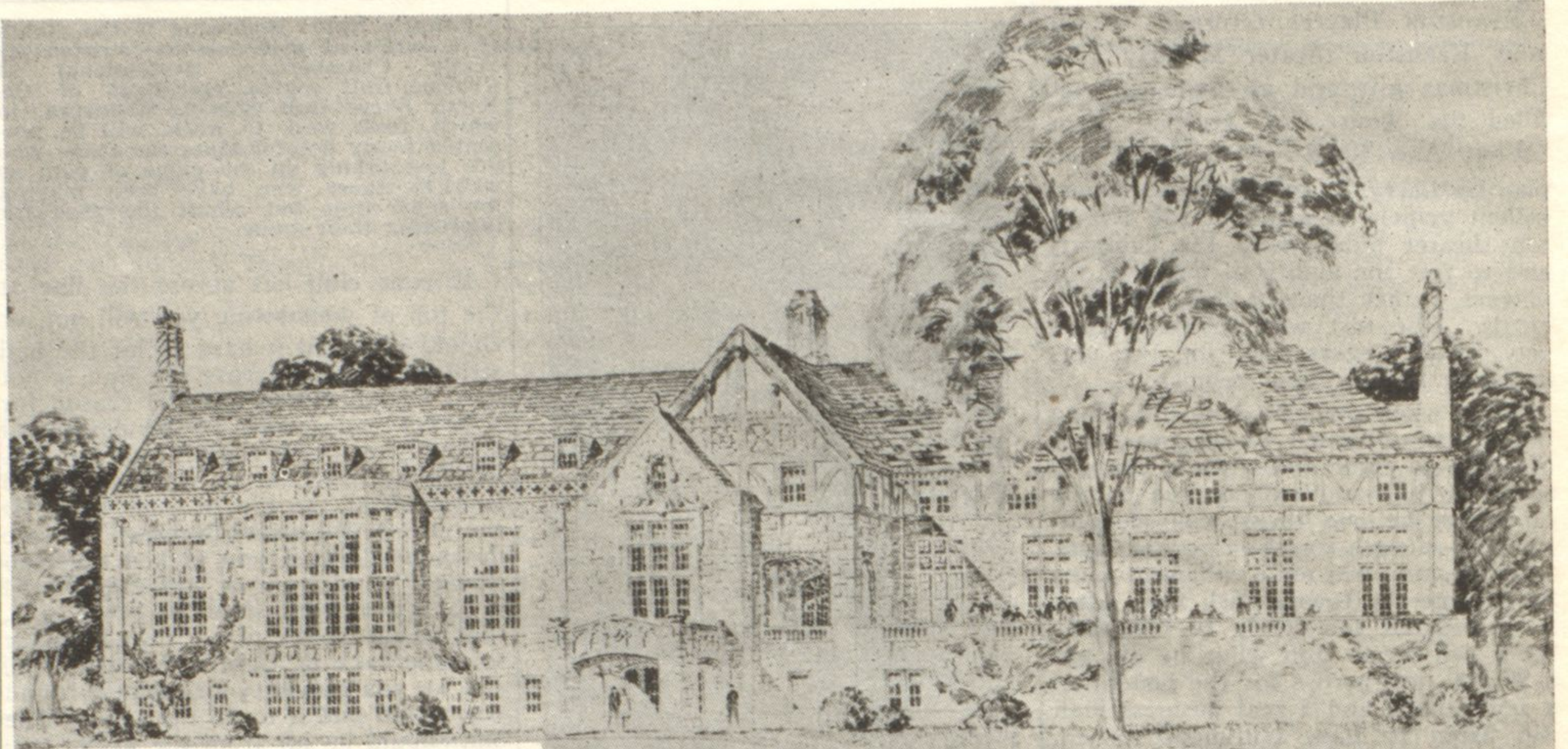
Telephones:
University 1024
Wilmette 3700
Rogers Park 1122

After Christmas Cleanup of Counter-Soiled Boxed Stationery at **1/2** Price!

Much of our finest stationery is included in this clearance. Whiting and Cook, and the fine Crane papers—in boxes of note paper, correspondence cards, writing papers and envelopes, combined into various sets, large and small. Best to shop early for these bargains.

First Floor

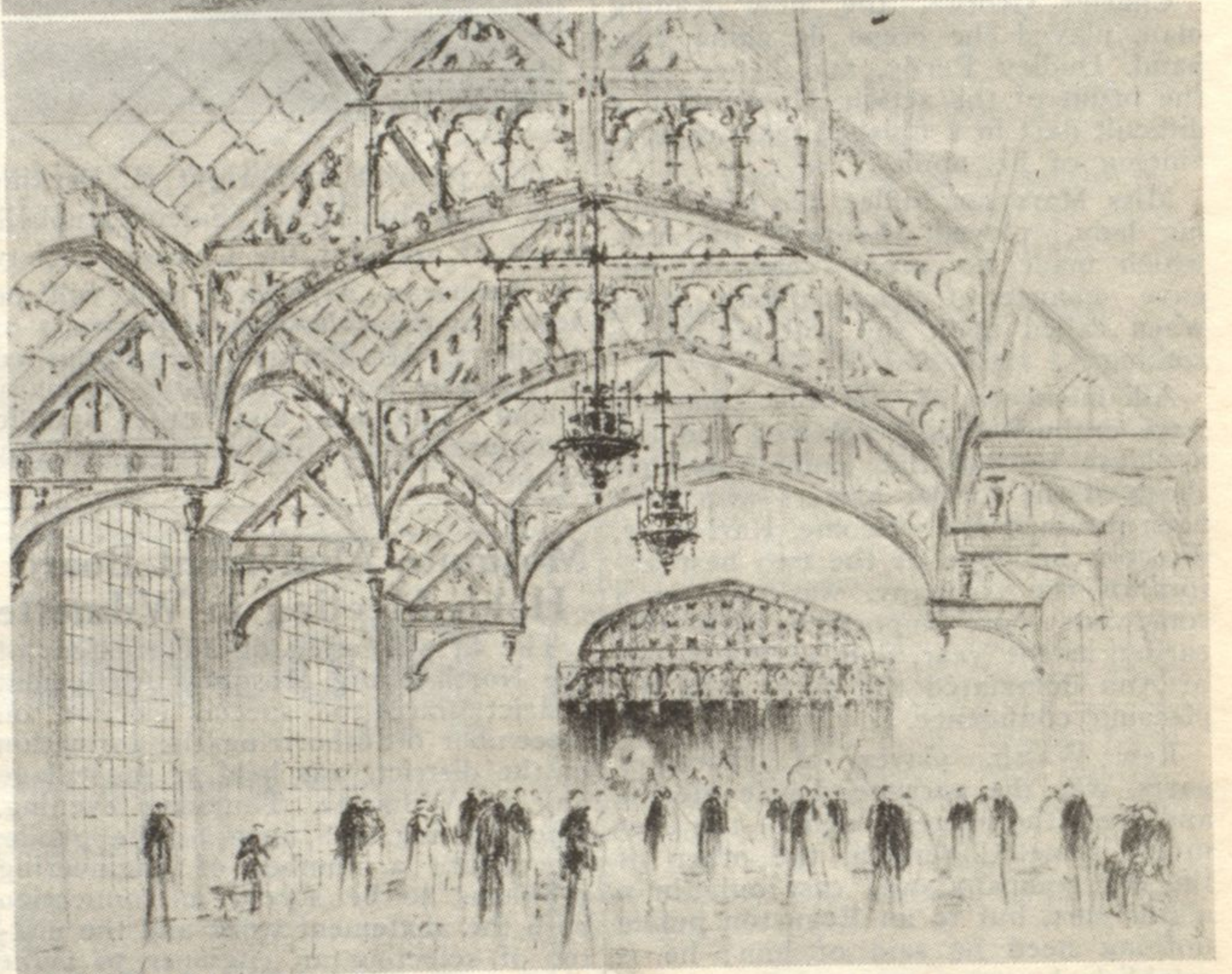
They're Rarin' to Go at the Shawnee Country Club



Albert N. Page, President (top)
E. H. Searle, Vice-President (below)

Kenilworth Girl Injured When Struck by Automobile

Priscilla Willard, the six-year-old daughter of F. H. Willard, 505 Ridge avenue, Kenilworth, creator of the "Moon Mullins" comic strip in the Chicago Tribune, suffered minor bruises and scratches last Saturday afternoon when struck by a car driven by Albert Smith, 577 Oak avenue, Winnetka. The child was not seriously injured in the accident which occurred in front of the Kenilworth postoffice.



Spring isn't far off, but the members of the new Shawnee Country club are going to be impatient until it arrives, for that's when the work of construction on the new clubhouse on Michigan avenue, Wilmette, pictured at the top, is to be started. Below is shown the architect's drawing of the ballroom, which is to be some ballroom, and as the picture tells the story it is not necessary to say more about it here.

New Shawnee Club, an "English Manor"

WHEN the original plans were prepared for the new Shawnee clubhouse on Michigan avenue, Wilmette, just across from the lake, the picture expressed beauty, but judged by what has happened since, those actively interested in this fine Wilmette club do not believe there is any limit to the skill of an architect. That's why WILMETTE LIFE is herewith presenting pictures (not the original plans at all) showing just how the Shawnee Country club will look sometime next summer when the work of construction is completed. Work is to be started early in spring.

The architects, D. H. Burnham and company found it necessary to prepare a new set of plans which are shown on this page.

The new plans call for a handsome structure reminiscent of the picturesque old manor house of England. En-



Elmer H. Bersbach, Treasurer

try is through a stair hall with a beamed ceiling. An Elizabethan stair- (Continued on page 37)