

INCLUDE LOCAL ROADS IN 1928 IMPROVEMENTS

Highway Advisory Committee Makes Specific Recommendations to Cook County Board

Improvement of many roads in Cook county including north shore highways, are recommended to the County board for its 1928 road program by the Cook County Highway Advisory committee, Harry P. Branstetter, chairman, in an extended statement and program issued recently. The committee is composed of a large group of interested citizens including several leaders in the north shore area.

Of especial interest to north shore residents, in the committee's lengthy list of suggested improvements reaching into every section of the county, are several propositions in the immediate vicinity which may be recorded briefly as follows:

Many Local Projects

Center street in Winnetka (listed as under contract) as another link in the proposed through highway; Green Bay road, Dundee road to Lake county line, to be widened to 40 feet; Waukegan road, from Milwaukee avenue to Glenview road, to be widened to 40 feet; West Railroad avenue (Evanston), Main street (Wilmette), West Railroad avenue (Kenilworth) and other portions (except completed sections) of proposed through highway from McCormick road to north county line, 40 foot pavement; McCormick road to Simpson street, Emerson street to Crawford avenue, Simpson street to Gross Point road combined in a single improvement, 20 foot pavements; Gross Point road, Central street (Evanston) to Touhy avenue (Roger Park) 20 foot pavement.

The committee's suggestions for the year 1928 are based upon the program drafted by the 1926 highway advisory committee and which formed the basis of the \$15,000,000 highway bond issue. The recommendations for next season were effected only after consultation with the Cook County superintendent of highways, and with the advice and service of the Chicago Regional Planning association.

Much Work Completed

The committee expresses itself as "amazed to find the quantity of work which has been put under contract during 1927 because, from the popular reports in the newspapers, its members had been advised that very little work had been undertaken."

Total mileage of all proposed new construction recommended by the advisory committee is given as 155.9, summarized as follows:

Pavement widened to 40 feet, 39.7 miles; new pavement, 40 feet wide, 27 miles; new pavement, 20 feet wide, 89.2 miles.

The active members of the Ace of Clubs, have issued invitations to the alumnae for a bridge party to be given in their honor the afternoon of Wednesday, December 28, at 2 o'clock, at the home of Jane Babcock, 566 Ash street, Winnetka.

LECTURES IN CITY

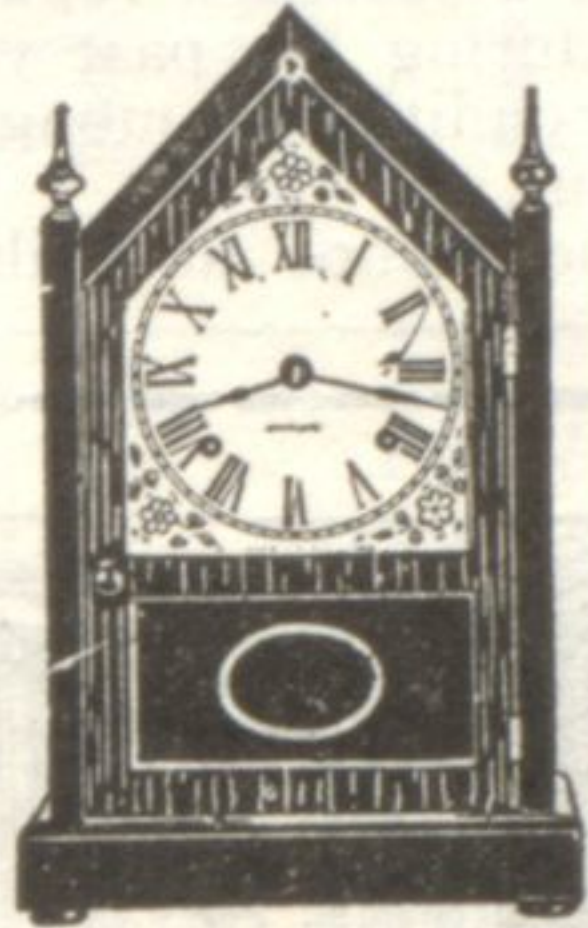
Mrs. Harry Barnum of 735 Walden road, Winnetka, is giving a lecture on "Landscape Gardening" this morning at 10:30 o'clock before a meeting of the Chicago Woman's club arranged by its art and literature department.

Miss Jane Young, 333 Cumnor road, Kenilworth, daughter of Mr. and Mrs. Frank R. Young, will return home for the holidays about December 22. Miss Young is a student at National Park seminary, Washington, D. C.

Mr. and Mrs. E. W. Ankrum returned to their home at 712 Ash street, Winnetka, Monday, following a sojourn in South Carolina.

GLETT'S of Enduring Charm

Seth Thomas Clocks



In selecting a gift for the home, consider a Seth Thomas Clock, a gift that will express the good judgment of the giver. An extraordinary variety in our complete display.

1835 R. Wallace Silverware



What gift is more substantial or more genuinely useful—than a set of 1835 R. Wallace Silverware? Sterling silver speaks the language of good taste understood by all. There is nothing can take the place of silver—alluring, irresistible! Here you may choose a single piece or a sumptuous chest-full.

Electric Clocks

Be sure to see the new Sangamo Electric Clock—guaranteed to vary not more than 30 seconds a week. No winding—plugs into the light socket.

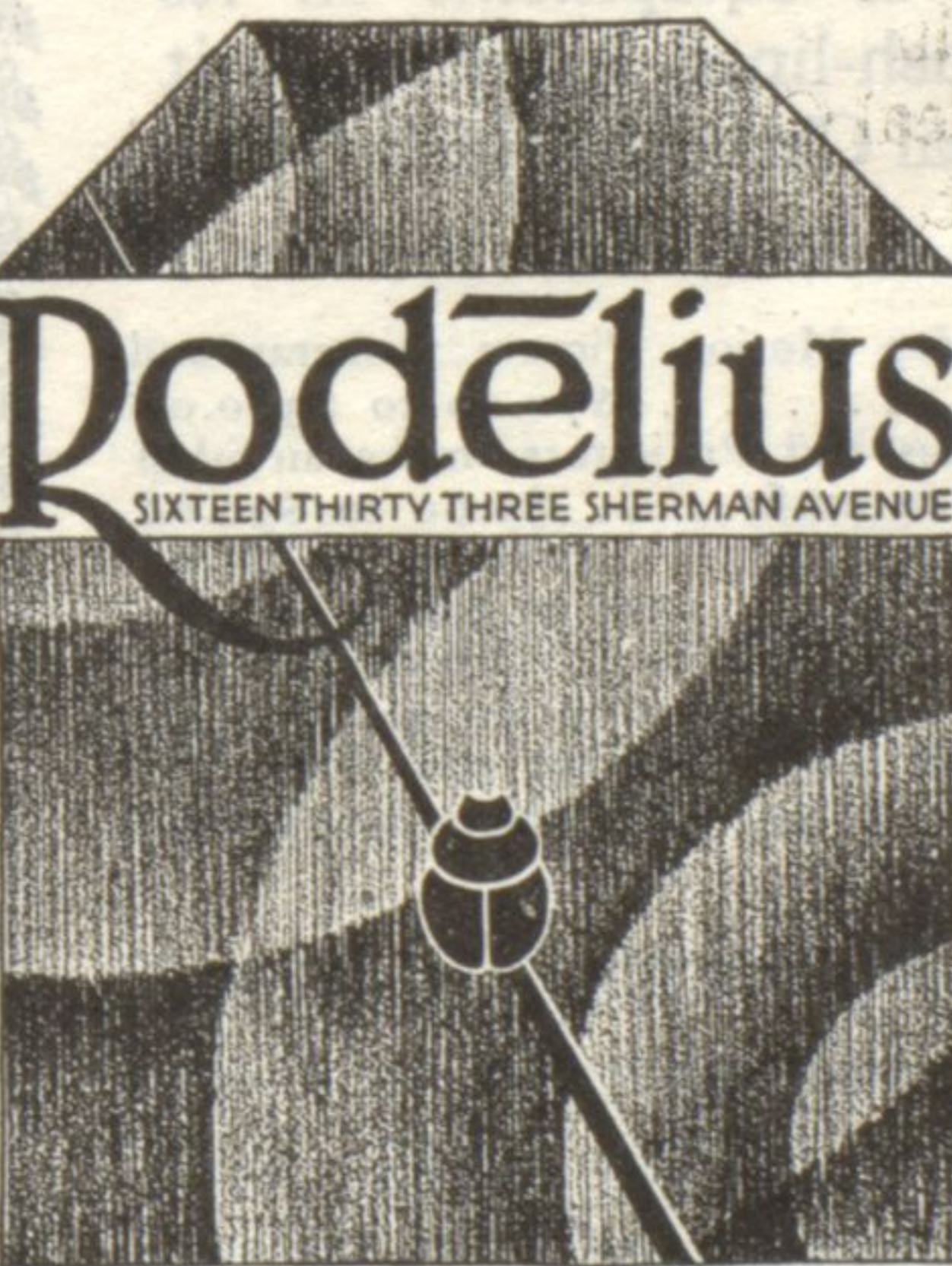
Let us suggest:

- Bar Pin
- Belt Chain
- Bracelet
- Brooches
- Cuff Links
- Desk Set
- Wahl Fountain Pen
- Jewel Box
- Locket
- Mesh Bag
- Military Brushes
- Napkin Holder

OPEN
EVENINGS

ONE BLOCK FROM THE FOUNTAIN — FOR TWENTY-THREE YEARS

Telephone
University 2635



Rodelius
SIXTEEN THIRTY THREE SHERMAN AVENUE

Gruen Watches

To choose a holiday remembrance at the Rodelius Shop, is to be assured of its correctness as a gift and as an article of good taste. Here are "gifts that last" for every member of the family—for every friend.

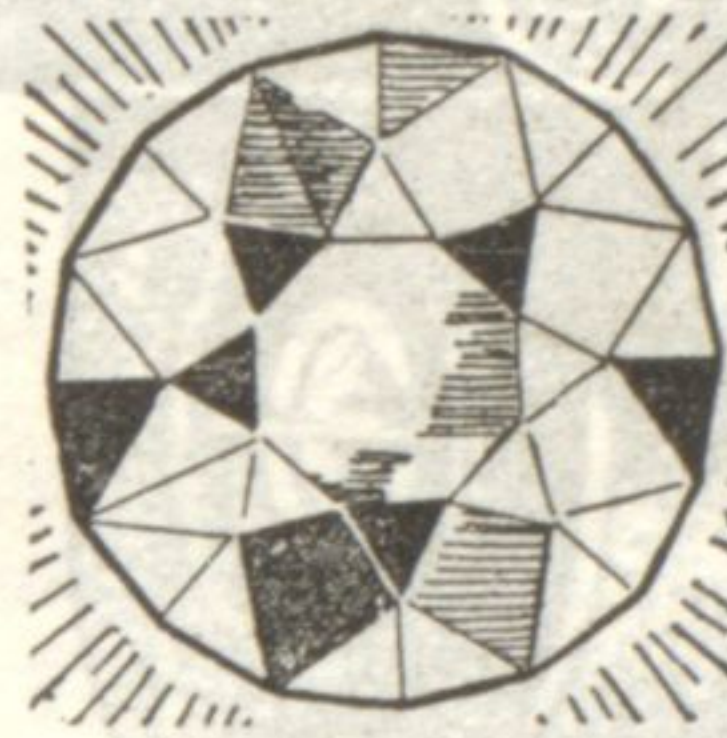


To be fully acceptable as a gift, a watch must have reputation or social standing in the eyes of the recipient, in addition to being useful and beautiful.

In the selection of a Gruen Watch, Wristlet, Strap, or Pocket Styles, you enjoy the assurance of having presented a watch of genuine worth and countrywide prestige.

Jewels have always been regarded as especial tokens of affection and esteem. The gems and settings displayed here will express the Christmas sentiment most heartily.

Diamonds



Elgin Watches

The distinctively designed Elgin Wrist and Bracelet Watches are timepieces that anyone is proud to wear. In rectangular and other distinctive shapes. The diamond-set Elgin is an exceptional gift.

Hamilton Watches

Hamilton Watches for men and women are gifts of enduring remembrance. Hamilton Watches are 17-jeweled and known for their faithful timekeeping.

Why not give:

- Napkin Holder
- Necklace
- Pearls
- Pen & Pencil Set
- Pocket Knife
- Salt and Pepper Shakers
- Toilet Set
- Vanity Case

OPEN
EVENINGS

Across from
the Postoffice