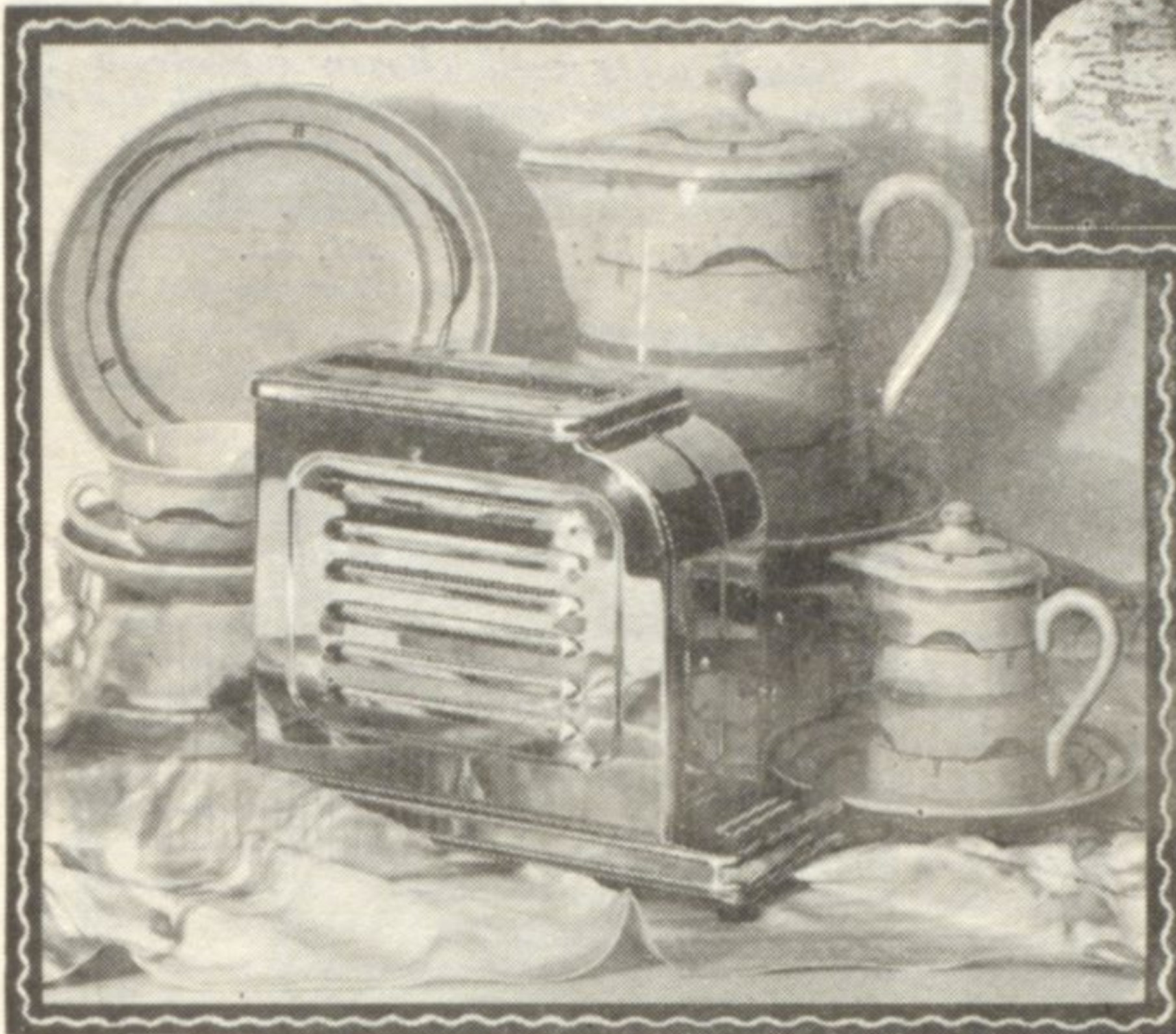


"The Toastmaster", aristocrat of toasters, is automatic, \$12.50. The waffle set of 24 pieces is imported and hand painted—a gift the entire family will enjoy, \$10.95.

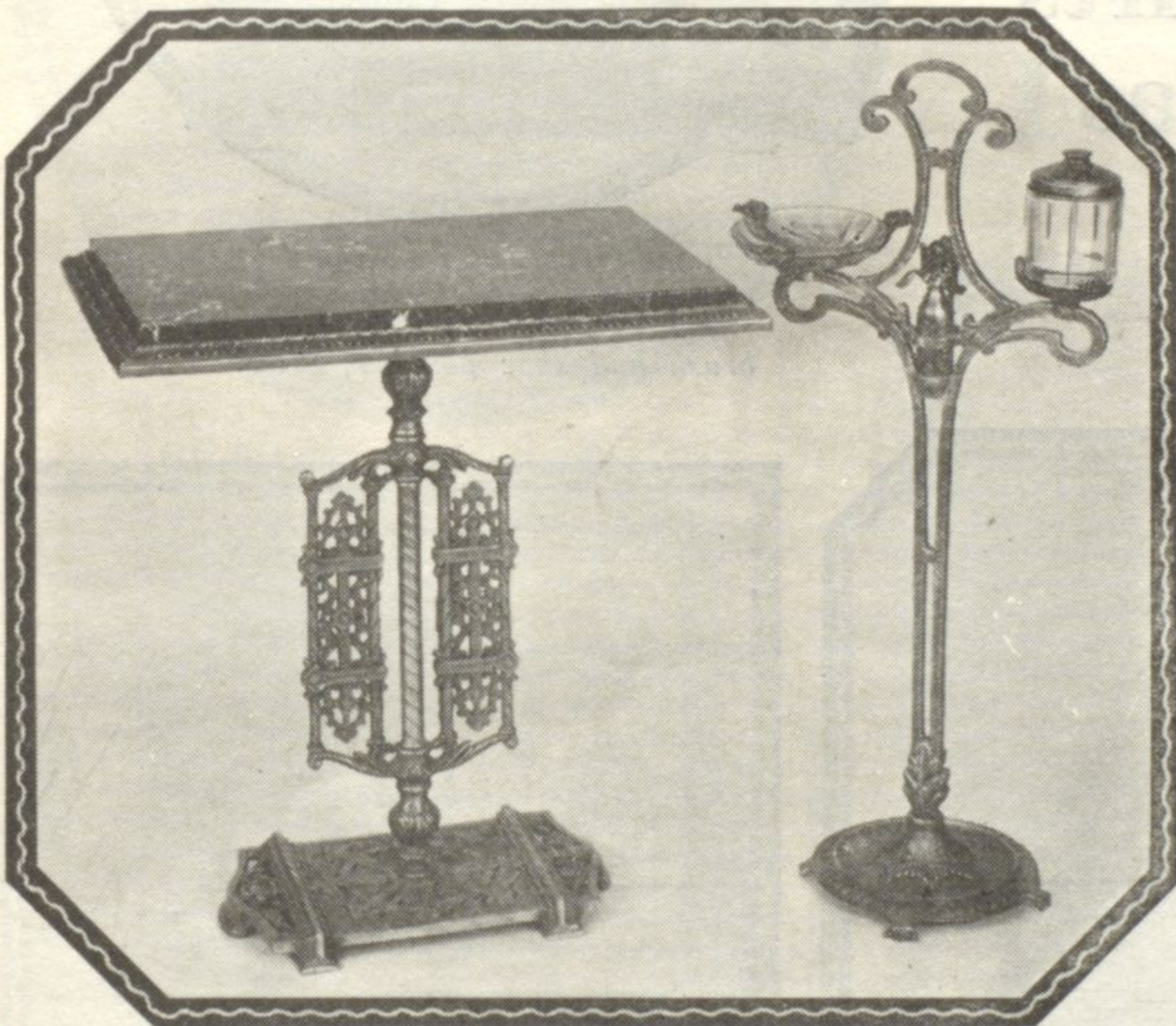
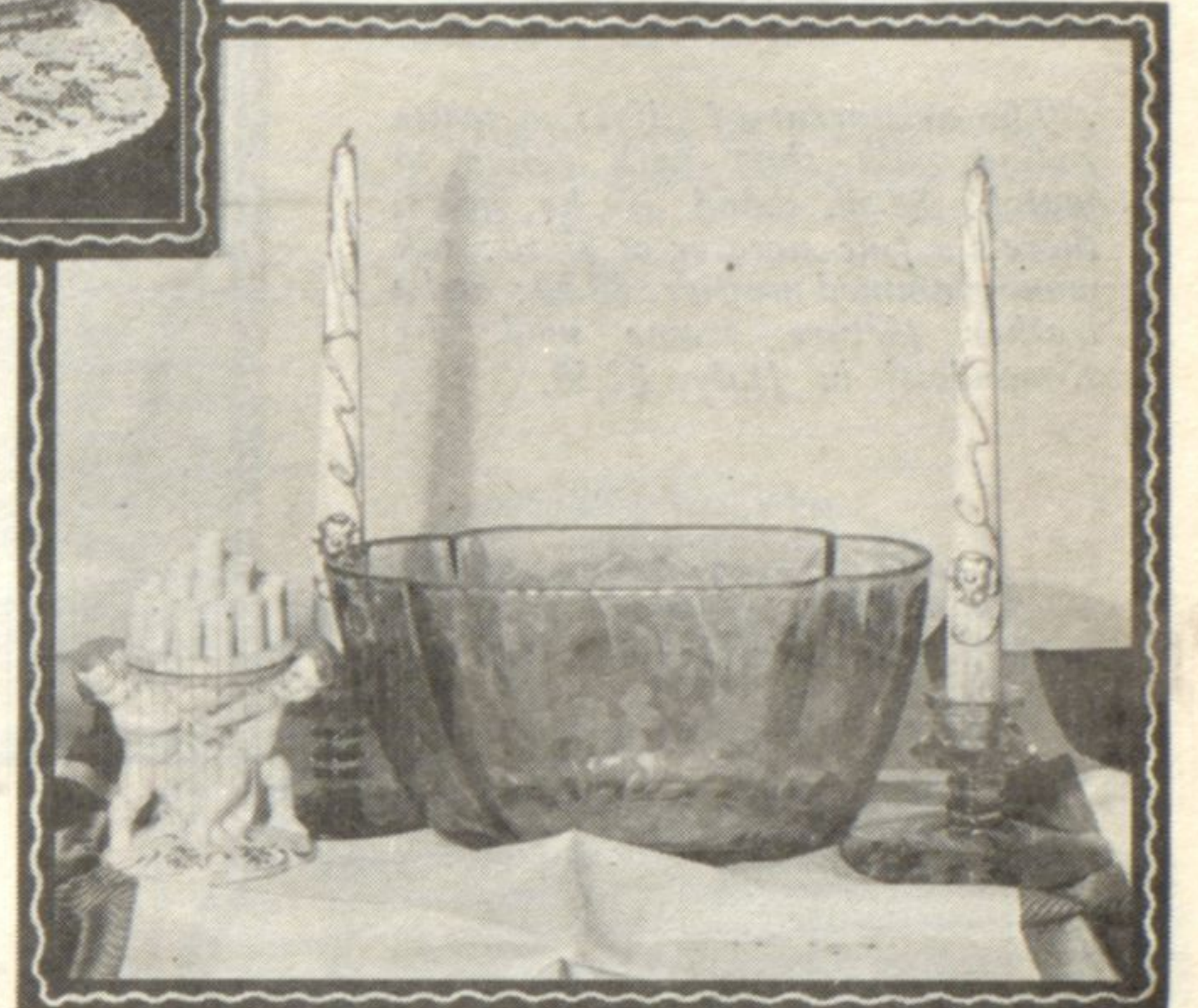


A silver pitcher gleaming with Christmas cheer, \$12.95, and a gravy boat equally beautiful, \$11.95, will find welcome in every home. Candy jars from Italy, hand decorated, \$5.95 each, a crystal tree, \$3.95, and a Point Elster vanity set, \$6.95.

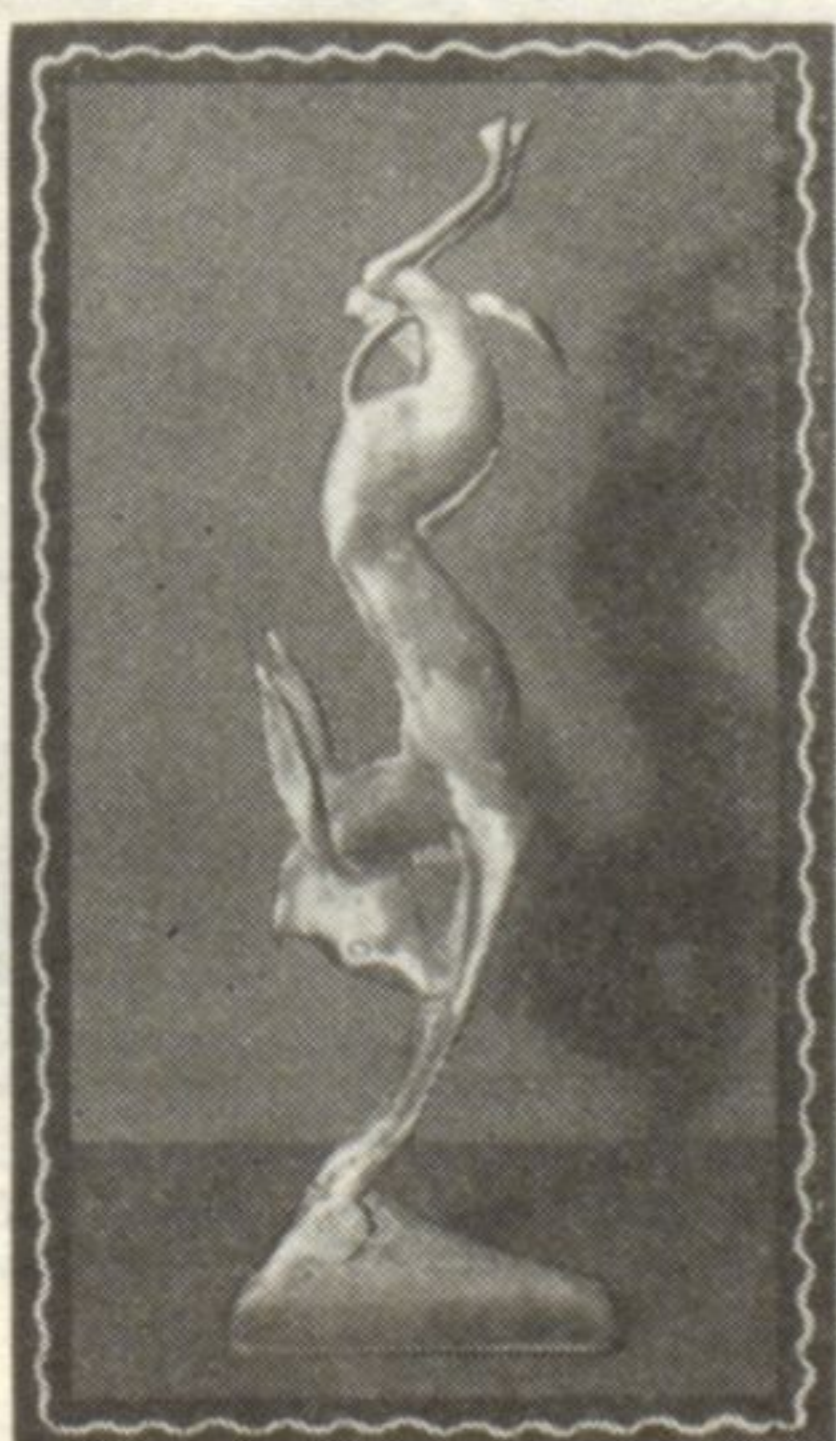
Rose Marie is the color in this beautiful console set of candle holders and bowl with hand cut design, \$9.45. The cigarette holder is \$4.50. Candles, \$1.95 pair.



Gifts to Bring New Charm to the Home



A coffee table of unique design has a simulated marble top. The pedestal shows the grill design, \$12.95. Smoking stand contains a cigarette jar, amethyst ash tray, and automatic lighter, \$6.50.



Expressing frivolity is this kicking mule of burnished brass, used as a door stop—\$7.95.



Lamps! What home has enough? One of crackled mirror base with painted parchment shade is especially new and distinctive. Shade at \$2.50, base, \$4.95. A slender imported glass base, \$9.95, and a book linen shade, \$4.95, give the smart touch to the home.

Store Hours Until Christmas, 9:00 A. M. to 9:30 P. M.
The U. S. Sub Postal Station is open at Rosenberg's from 9:00 A. M. to 6:00 P. M.

ROSENBERG'S

Davis Street - - Downtown Evanston