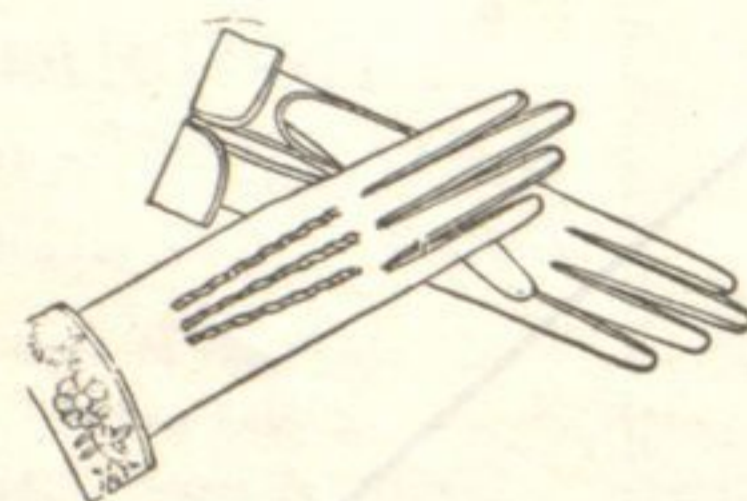
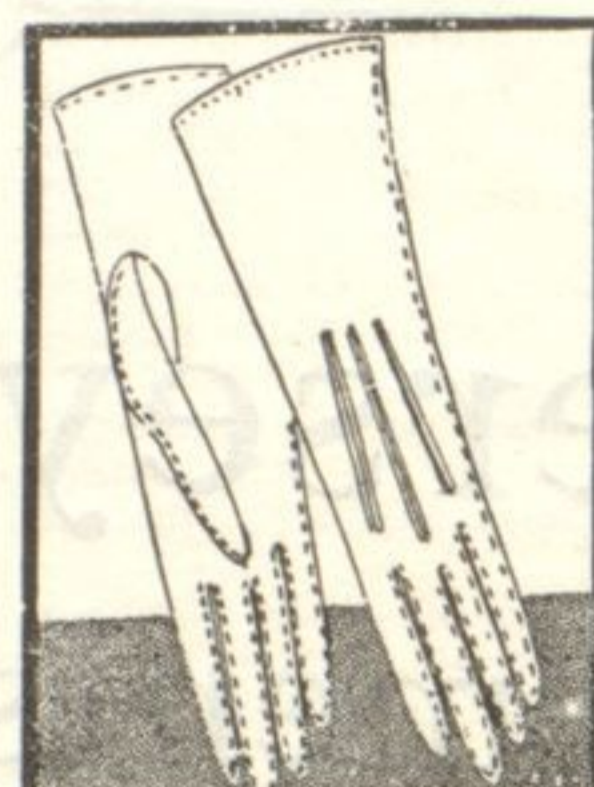


# Showing How This Season's Gloves Are Part of the Ensemble

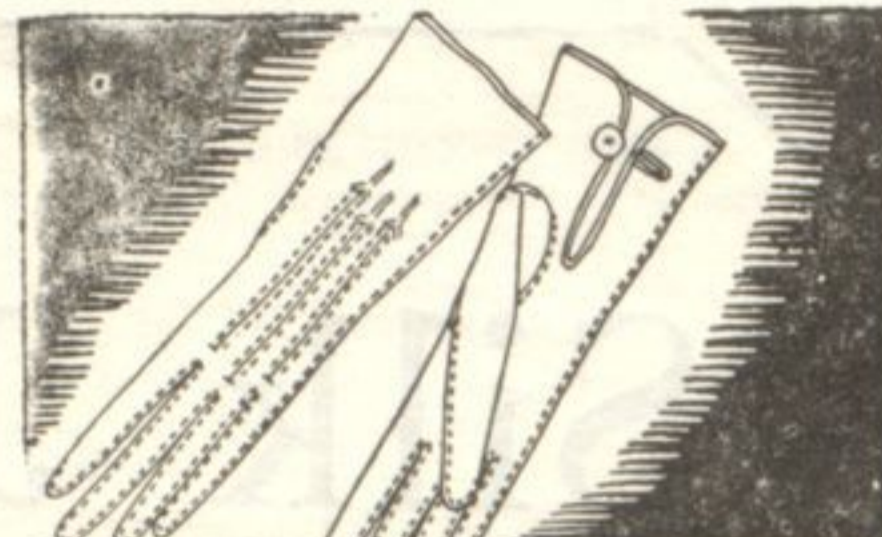
Even as the sports note influences women's clothes for practically every occasion, so do the gloves to wear with them take on the sport quality. For formal afternoon wear, however, there are many lovely gloves with embroidered cuffs.



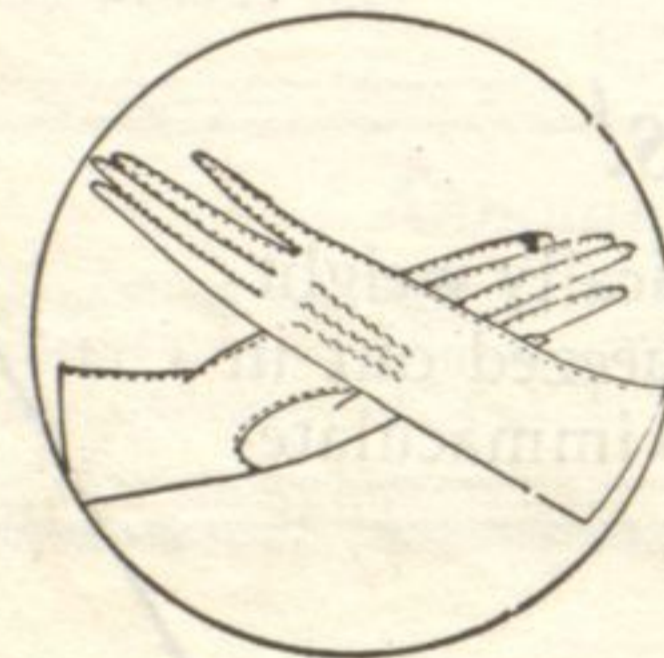
Finest of French kidskin—in brown, beaver, champagne, gray, mode, white and black. Two-tone, or color-embroidered. \$3.75 to \$4.95.



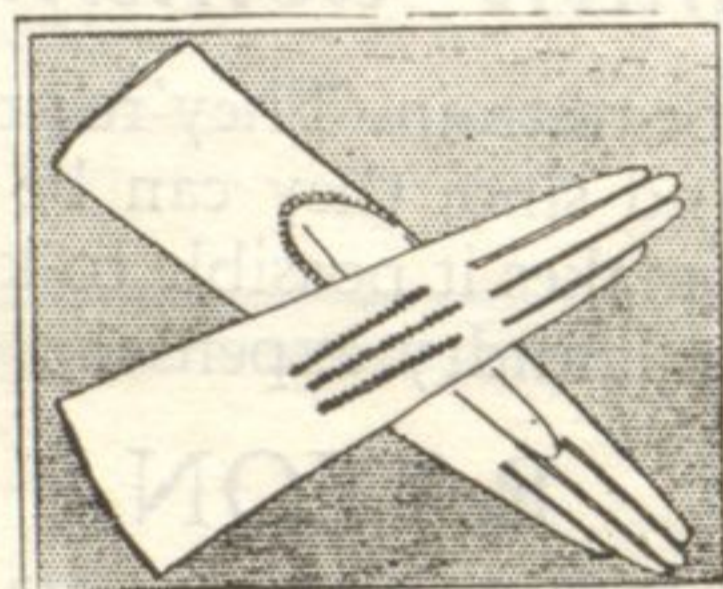
Washable cape with wide-stitched backs. Wood, gray, mode. \$3.75. A glove for the winter tailleur.



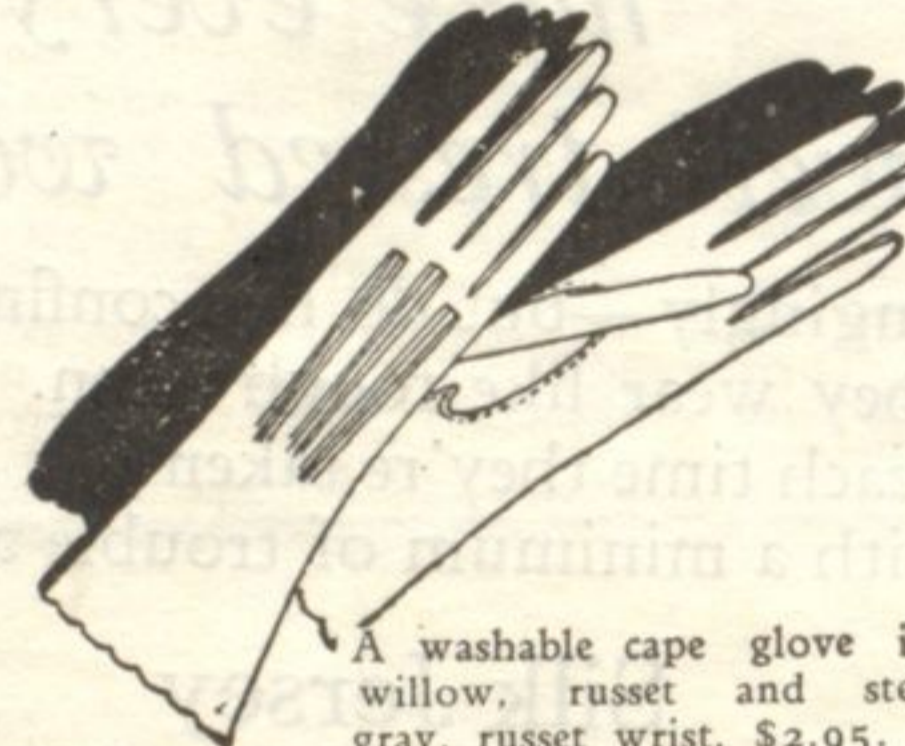
One-button tailored sports gloves in navy blue and purple, stitched by hand and piped in gray. \$4.25.



Washable cape, with hand-sewn seams in sharp contrast, and a whipped ribbed back. Black and white, tan and black, gray and black. \$4.25.



Priscilla gray, with blue-embroidered back. \$4. Slightly dressy.



A washable cape glove in willow, russet and steel gray, russet wrist, \$2.95.

Lord's—Gloves—First Floor.

# Lord's

INCORPORATED

A. H. ULRICH Pres.

FOUNTAIN SQUARE · EVANSTON

*This Is Our Last Opportunity to Remind You, in This Paper, of Thanksgiving Linens*

Before this time next week it will already be too late to buy them!

## Damask Matched Sets

(Hemstitched Hems)

Poppy design; 66x88 cloth and 12 napkins, \$19.50.  
Wild Rose design; 72x72 cloth and 6 napkins, \$25 Set.  
Fruit and Vase design, 71x88 cloth and 12 napkins, \$21.50.  
Morning Glory design; 64x84 cloth and 12 napkins, \$12.50.

## Matching Cloths and Napkins

Priced Individually

Shamrock and Scroll; 72x90 cloth, \$10; 22 inch napkins, \$10.00 dozen.  
Lily-of-the-Valley; 72x90 cloth, \$11.50; 22 inch napkins, \$11.50 dozen.  
Poppy; 68x86 cloth, \$4.95; 22 inch napkins, \$4.95 dozen.  
Chrysanthemum, 70x106, \$8.25; napkins, \$6.75 dozen.  
Forget-me-nots, 72x90 cloth, \$31; 24 inch napkins, \$32 dozen.

### Pattern Cloths

72x108, Shamrock, \$10.75.  
70x106, Persian, \$9.50.  
72x90, Chrysanthemum, \$14.  
72x72, Rose, \$6.75, \$9.95.  
72x72, Conventional, \$8.25.

### Pattern Napkins

Wild Rose, \$14 dozen.  
Conventional, or Poppy, \$12.  
Shamrock, \$10.  
Pansy or Water Lily, \$7.50.  
Chrysanthemum, Rose or Tulip, \$6.50.  
Satin-stripe, \$10 dozen.

Lord's—Linens—First Floor.



# DANCE FROCKS for Holiday Parties

## \$27.50

Every day people tell us what exceptionally lovely dresses we have at this price—And there are scores to choose from! Dresses for every type—in every becoming color—See them before you buy!

Salmon pink georgette, with bolero bordered with brilliants and pearls.  
Lilac Period gown of georgette, with gros de Londre ruffles edged with silver.  
A black georgette dinner gown with a flesh foundation, and applique of velvet.

A shell pink satin falls into gracious swaying folds, caught at low-waistline by an ornament of brilliants.  
A Robe de Style of coral georgette has panne velvet coral ruffles at side.  
Rose georgette, spangled with crystal bugles.

A quaint circular frock, with simulated flounces set together with tulle, is of pink georgette.  
Accordeon-pleated coral georgette skirt, bordered with matching thread lace, is topped with a straight bodice.

Any of These Frocks—\$27.50

Lord's—Lovely Party Dresses—Second Floor.

# Special Sale of Smart Footwear

Beginning Next Week—Monday, Nov. 21—Until Saturday, Nov. 26

## \$6.85

Thousands of shoes—shoes that are radiantly new, delightfully different—shoes that are exquisitely made for dinners or dances, strolling or shopping—thousands of them here in a very Special Sale.

## \$7.85



## \$9.85



Footwear that is regularly much higher in price, will be tremendously reduced all next week. Satin, suede, velvet, patent leather, blue kid, calf, reptilian leathers—in a variety of smart styles.

Boot Shop—Main Floor.

## Early Christmas Shoppers Who Have Charge Accounts with Us - -

have the privilege of deferring payment for November purchases until January. Avail yourself of this unusual shopping convenience.

Financially-responsible people are invited to open charge accounts with us.

Credit Office—Second Floor.