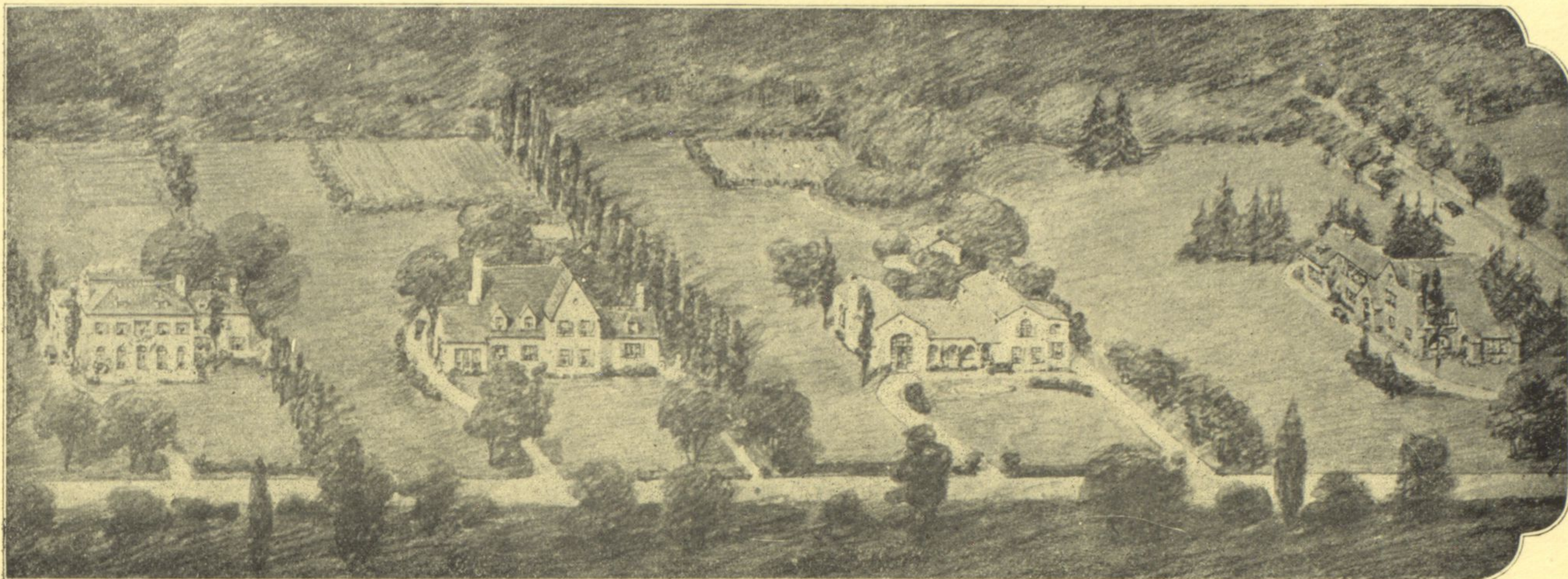


See preceding and following page for the story of Westmoor Trail



DEAN and DEAN, Architects

WESTMOOR TRAIL—in Winnetka

CHURCHES AND RELIGIOUS EDUCATION

We who live here appreciate the splendid churches and the men selected to minister to our spiritual needs. The Winnetka Congregational Church, Christ Episcopal Church, the Lutheran Church and the Catholic Church—all are actively supported by large and enthusiastic congregations. They are equally as appealing to intelligent mature minds as they are in supplying a substantial religious education to children.

You will be interested in a church here because the church will be interested in you.

To those who "know" the north shore, a great deal of the information given here is superfluous—just "Winnetka" is enough.

The idea has been not to attempt to "sell" this proposition (there will be only 7 locations at the most)—but to convey as complete an idea as was possible to show first, that this is somewhat unusual, and second, that

those who would appreciate it most would enjoy it most and be most desirable neighbors.

No one will be asked to buy this property.

It will be a pleasure to show it to any who care to come.

HOW TO GET THERE

You may drive west on Elm Street to Hibbard Road—the entrance to the Golf Course) turn north on Hibbard Road to the little farm house on the west, at what was formerly Fig Street, now named Westmoor Road.

Or, driving north on Sheridan Road, turn west on Tower Road crossing the tracks and continue straight west one-half mile to Hibbard Road (which begins at Tower Road) turning south on Hibbard to Westmoor.

Come any time during the day—some one will be glad to answer your questions and give you such information as you may desire.

