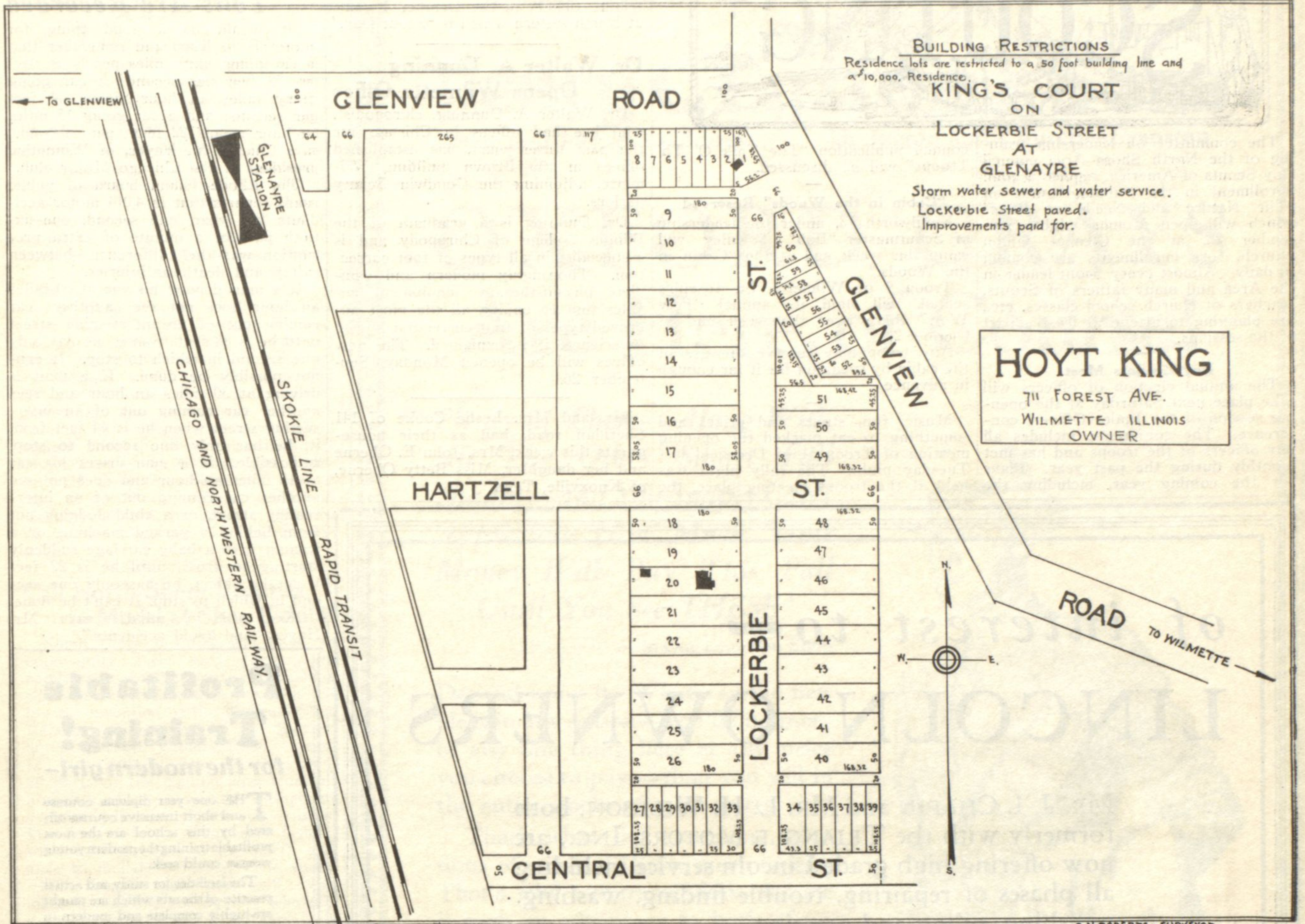


King's Court—Glenayre—Lockerbie Street



Open for sale Saturday, September 24th. Now that King's Court has been permanently and legally established in Wilmette, we are offering you lots in King's Court 50 x 180 with natural shade trees, nearly every variety known to this section, with storm sewer, and water service and improved streets in and paid. This property is restricted to \$10,000 dwellings. No lot is over three blocks to Glenayre station, Chicago North Shore. Rapid electric transportation. Price \$42.50 to \$55.00 a foot 25% cash and 60 easy monthly payments, with 6% interest. The Evanston street car line renders service within one block of South line of the Court. Wilmette-Glenview bus service to both towns. These are most desirable homesites with underground improvements and street. If you are earnestly seeking a home in a good community you should look these properties over, we will help you finance and build and at any time you want to improve your properties we will take second mortgage for unpaid installments. Come out and spend the day in King's Court—Look over the model home now almost completed and arrange to get one for yourself and family built to your own plans. See us at the office in the Court for further particulars.

OFFICE PHONE
WILMETTE 225

J.H. Gathercoal

Builders, Real Estate, Insurance, Loans
Established 1900

1213 Wilmette Avenue Wilmette, Illinois

RES. PHONE
WILMETTE 226